



# VCP-550<sup>Q&As</sup>

VMware Certified Professional - Data Center Virtualization

## Pass VMware VCP-550 Exam with 100% Guarantee

Free Download Real Questions & Answers **PDF** and **VCE** file from:

<https://www.passapply.com/vcp-550.html>

100% Passing Guarantee  
100% Money Back Assurance

Following Questions and Answers are all new published by VMware  
Official Exam Center

- ⚙ **Instant Download** After Purchase
- ⚙ **100% Money Back** Guarantee
- ⚙ **365 Days** Free Update
- ⚙ **800,000+** Satisfied Customers





### QUESTION 1

An administrator adds an ESXi 5.x host to the inventory of a vCenter Server that is configured with a vSphere Distributed Switch. The vSphere Web Client indicates that the host is not responding. The administrator determines from the command line that the vpxa agent is stopped.

What should the administrator do to resolve this issue without affecting the uptime of the virtual machines running on the host?

- A. Restart the management agents in the host's DCUI
- B. Remove and re-add the host to the vCenter inventory
- C. Restart the vCenter Server service
- D. Type /etc/vmware/vpxa start from the ESXi command line

Correct Answer: A

---

### QUESTION 2

An administrator needs to configure a Linux virtual machine template to support guest customization. The administrator has installed VMware Tools. Which additional component is necessary to enable Linux guest OS customization?

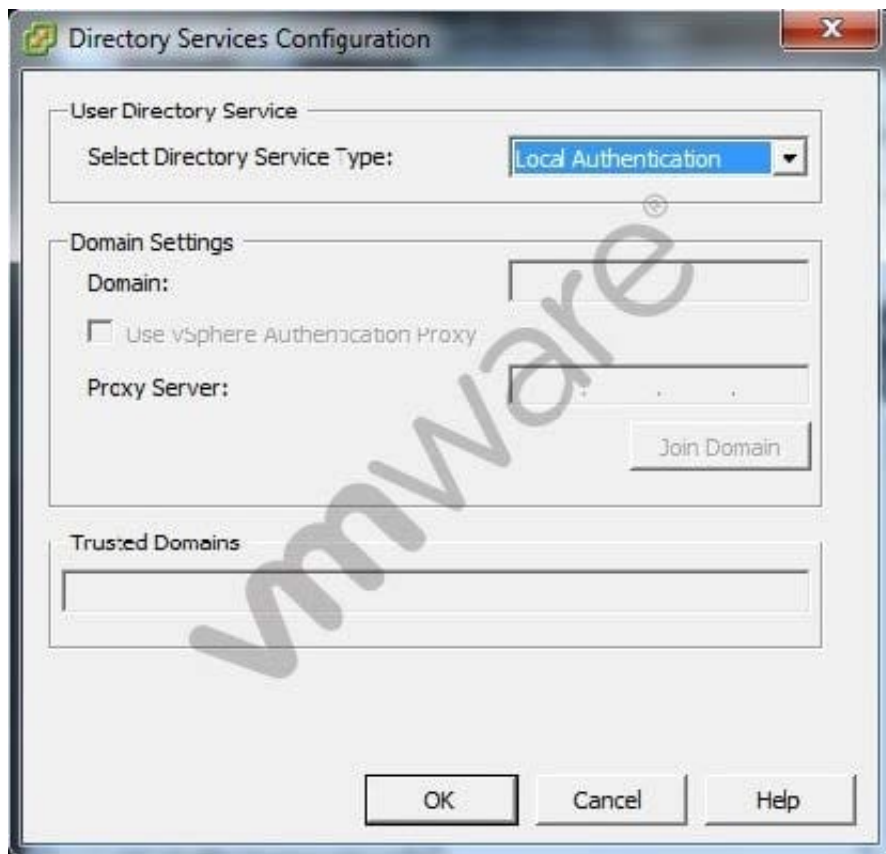
- A. Perl
- B. bash
- C. Python
- D. Sysprep

Correct Answer: A

---

### QUESTION 3

The vSphere administrator is configuring directory services for an ESXi host: -- Exhibit -



-- Exhibit -What should the vSphere administrator do to configure the host to use CAM services?

- A. Check the Use vSphere Authentication Proxy checkbox.
- B. Set Select Directory Service Type to CAM services.
- C. Specify CAM\$ for the Domain.
- D. Set Trusted Domains to cam\name.tld where name.tld is the domain that the host is joining.

Correct Answer: A

#### QUESTION 4

A vSphere administrator needs to perform packet tracing from a Linux virtual machine. The virtual machine is attached to a vSphere Standard Switch configured with several VLANs. Which approach could the administrator use to configure the network to capture all traffic from the Linux virtual machine?

- A. Configure the virtual switch with VLAN Trunking and specify each VLANs on the port group containing the virtual machine.
- B. Configure a vSphere Distributed Switch with VLAN Trunking. Create a port group and configure it with Promiscuous Mode. Connect the virtual machine to that port group.
- C. Configure the port group containing the virtual machine for Promiscuous Mode. Set the port group to use VLAN 1.



D. Configure a vSphere Distributed Switch with VLAN Trunking. Connect the virtual machine to the switch and enable Port Mirroring on the port group containing the virtual machine.

Correct Answer: B

---

#### QUESTION 5

Immediately after installing ESXi, an administrator observes that the Configure Lockdown Mode option is grayed out in the Direct Console User Interface (DCUI). What is the most likely explanation?

- A. The host has not yet been added to a vCenter Server.
- B. The BIOS on the host does not have NX/XD enabled.
- C. The ESXi host is running in evaluation mode.
- D. The host requires a reboot before this feature is available.

Correct Answer: A

[VCP-550 PDF Dumps](#)

[VCP-550 VCE Dumps](#)

[VCP-550 Practice Test](#)