



# VCP-550<sup>Q&As</sup>

VMware Certified Professional - Data Center Virtualization

## Pass VMware VCP-550 Exam with 100% Guarantee

Free Download Real Questions & Answers **PDF** and **VCE** file from:

<https://www.passapply.com/vcp-550.html>

100% Passing Guarantee  
100% Money Back Assurance

Following Questions and Answers are all new published by VMware  
Official Exam Center

- ⚙️ **Instant Download** After Purchase
- ⚙️ **100% Money Back** Guarantee
- ⚙️ **365 Days** Free Update
- ⚙️ **800,000+** Satisfied Customers





### QUESTION 1

Which information does the CPU Ready counter provide to a vSphere administrator?

- A. The virtual machine has requested CPU time, but the VMkernel cannot schedule the virtual CPU on a physical CPU.
- B. The virtual machine is idle, and the VMkernel has idle physical CPU cycles.
- C. The virtual machine has requested CPU time, and the VMkernel has idle physical CPU cycles.
- D. The virtual machine is idle, but the VMkernel cannot schedule the virtual CPU on a physical CPU.

Correct Answer: A

---

### QUESTION 2

An ESXi 5.x host is unable to connect to a vCenter 5.x server.

Which commands should an administrator use to restart the management agents on the host?

- A. SSH to the host and execute the commands - /etc/init.d/hostd restart and /etc/init.d/vpxa restart
- B. SSH to the host and execute the commands - /etc/init.d/vpxd restart and /etc/init.d/vpxa restart
- C. SSH to the host and execute the commands - /etc/init.d/vmware-hostd restart and /etc/init.d/vmware-vpxa restart
- D. SSH to the host and execute the commands - /etc/init.d/vmware-hostd restart and /etc/init.d/vpxd restart

Correct Answer: A

---

### QUESTION 3

An administrator needs to deploy several virtual machines. Storage contention between the virtual machines should be managed by the VMkernel. Some of the virtual machines will use MSCS and should be highly available across the ESXi

5.5 hosts.

Which two storage options meet these requirements? (Choose two.)

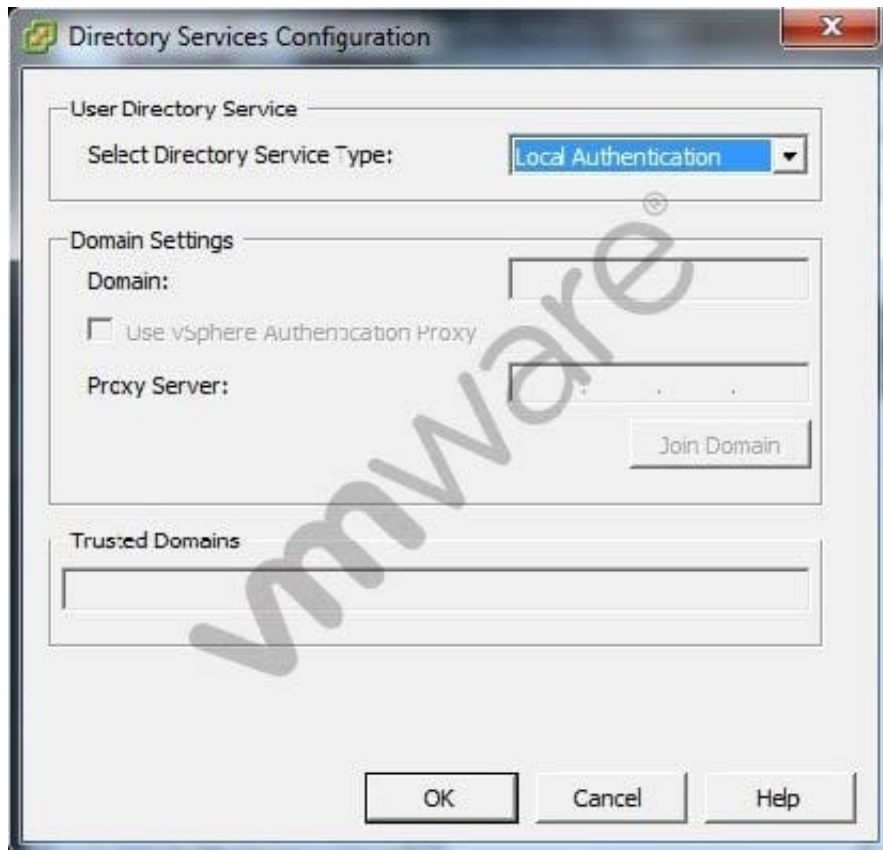
- A. iSCSI
- B. NFS
- C. Fibre Channel
- D. vSAN



Correct Answer: AC

#### QUESTION 4

The vSphere administrator is configuring directory services for an ESXi host: -- Exhibit -



-- Exhibit -What should the vSphere administrator do to configure the host to use CAM services?

- A. Check the Use vSphere Authentication Proxy checkbox.
- B. Set Select Directory Service Type to CAM services.
- C. Specify CAM\$ for the Domain.
- D. Set Trusted Domains to cam\name.tld where name.tld is the domain that the host is joining.

Correct Answer: A

#### QUESTION 5

An administrator needs to implement trusted SSL certificates for all vCenter 5.5 components. Which component needs



an SSL certificate?

- A. Update Manager
- B. Auto Deploy
- C. ESXi Dump Collector
- D. Network Syslog Collector

Correct Answer: A

[Latest VCP-550 Dumps](#)

[VCP-550 PDF Dumps](#)

[VCP-550 VCE Dumps](#)