



# VCP-510<sup>Q&As</sup>

VMware Certified Professional on VSphere 5

**Pass VMware VCP-510 Exam with 100% Guarantee**

Free Download Real Questions & Answers **PDF** and **VCE** file from:

<https://www.passapply.com/vcp-510.html>

100% Passing Guarantee  
100% Money Back Assurance

Following Questions and Answers are all new published by VMware  
Official Exam Center

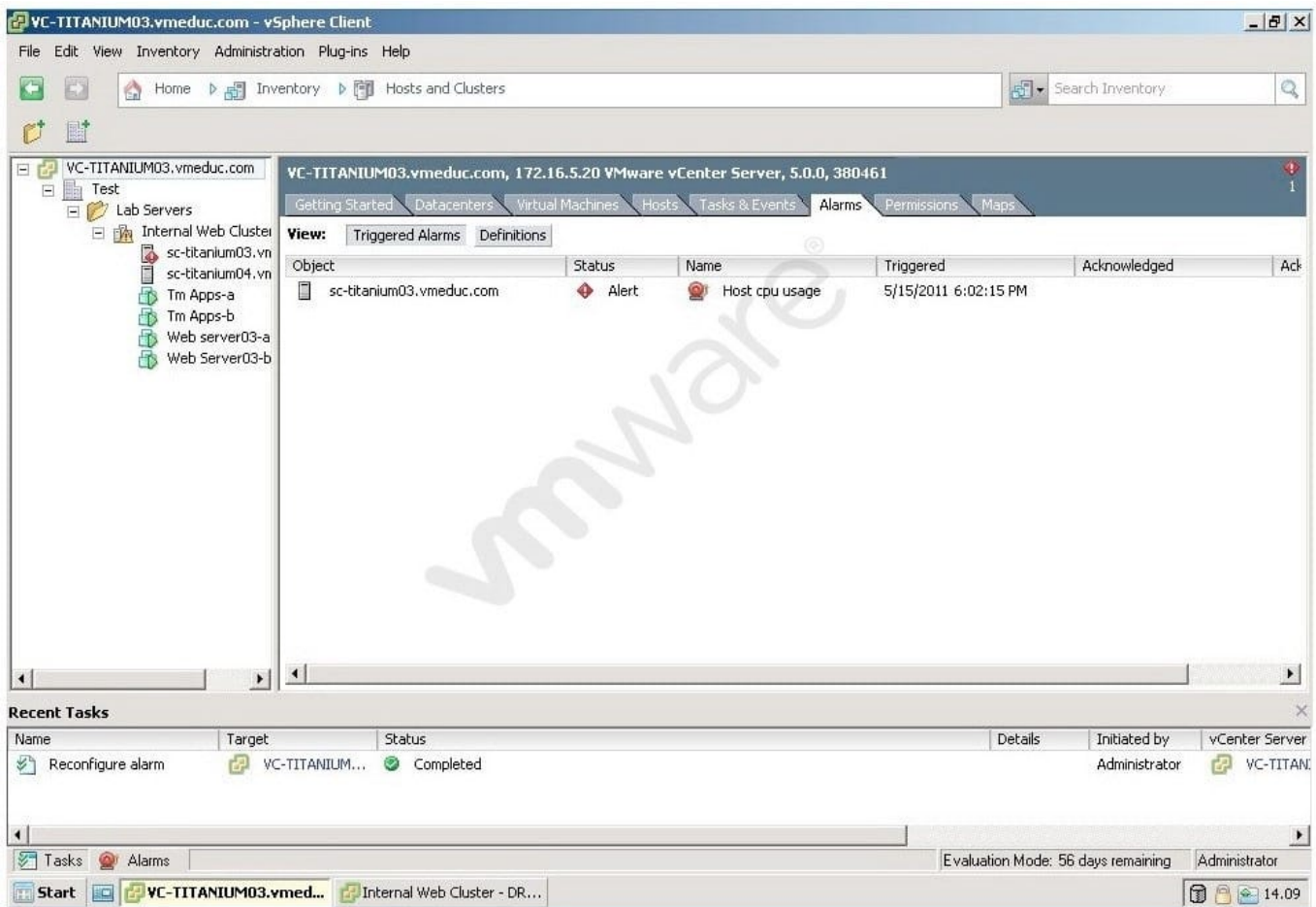
-  **Instant Download** After Purchase
-  **100% Money Back** Guarantee
-  **365 Days** Free Update
-  **800,000+** Satisfied Customers





### QUESTION 1

Click the Exhibit button. Users are having difficulty accessing a Web server since a new Web application was configured in a virtual machine running on sc-titanium03.vmeduc.com. The web server has been assigned 1 vCPU. The vSphere Client reports the error shown in the exhibit. DRS is set to fully automated mode, but the problem has not resolved. Which action can resolve the issue?



- A. Set a CPU reservation for the web server VM.
- B. Manually move the Virtual Machine using high priority vMotion.
- C. Configure the DRS Migration Threshold to Aggressive.
- D. Set CPU affinity for the virtual machine.

Correct Answer: A

### QUESTION 2

An administrator has two ESXi 5.x hosts. Each host has two resource pools, Production and Test and a vApp named TestvApp01. What is true when these hosts are added to a DRS cluster?



- A. An option is given during the process to graft the pools under the cluster's root pool, the vApp will be removed.
- B. An option is given during the process to graft the pools and vApp under the cluster's root pool.
- C. The resource pools and vApp are automatically grafted into the cluster under the root pool.
- D. The resource pools and vApp are automatically removed when the host is added.

Correct Answer: A

---

### QUESTION 3

A virtual machine is using a Fibre Channel attached RDM LUN. Which three use cases would necessitate a RDM? (Choose three.)

- A. VMware snapshots
- B. NPIV
- C. Physical server-to-virtual machine clustering
- D. Distributed file locking
- E. SAN management agents

Correct Answer: BCE

---

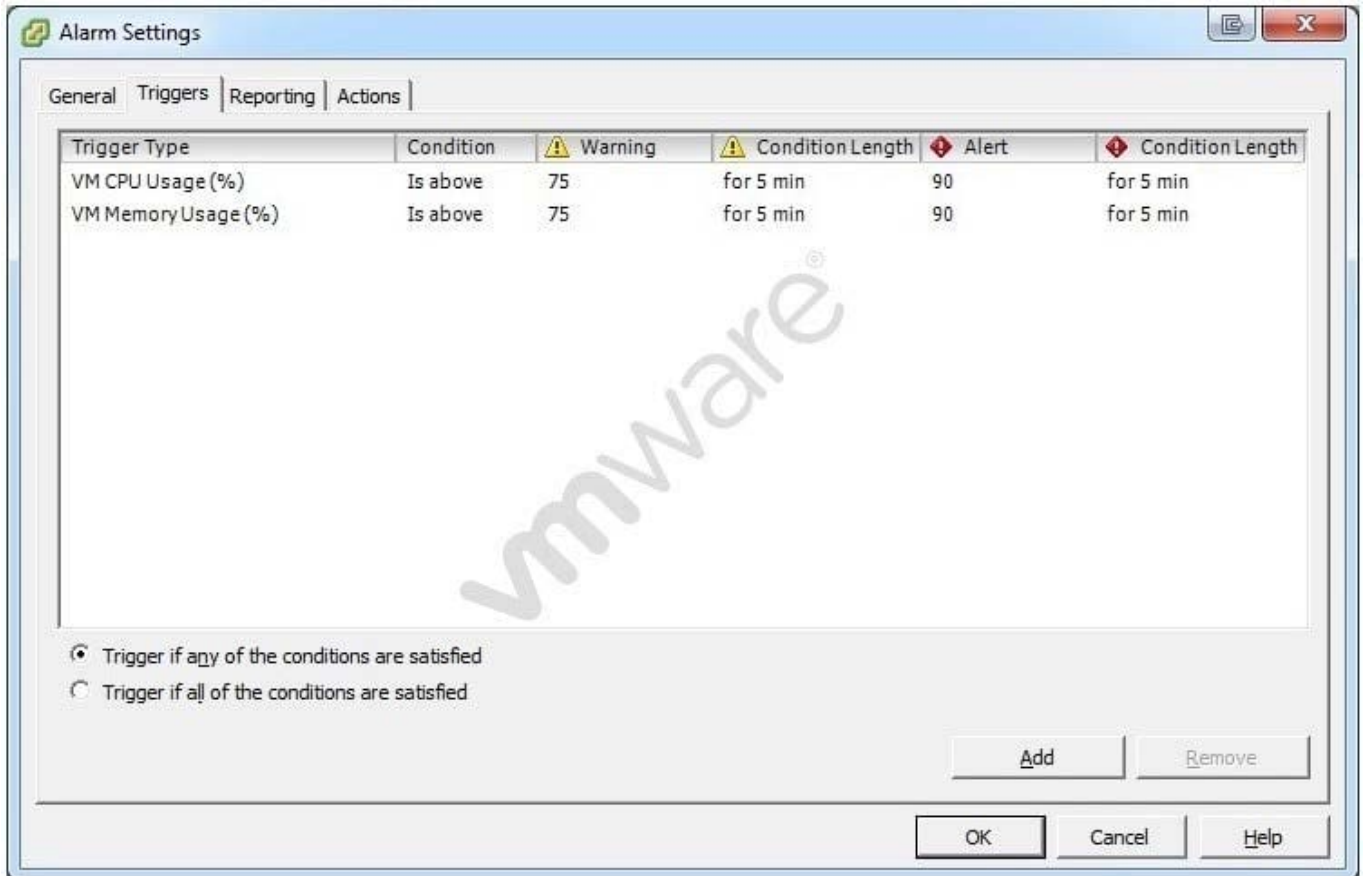
### QUESTION 4

Click the Exhibit button. ACME Party Supplies Corporation has a requirement to monitor all virtual machines in a vSphere 5 environment for CPU and Memory usage. An administrator configures an alarm in vCenter Server to send an alert

when any VM exceeds 65% memory utilization and 75% CPU utilization.

The alarm should warn administrators if the virtual machine is within 20% of the defined thresholds. The alarm has been created with the default options as shown in the exhibit. Which three modifications must be made to the default settings

in the alarm definition to satisfy the stated requirements? (Choose three.)



- A. Set the VM CPU Usage (%) Alert trigger to 75% and the VM Memory Usage (%) Alert trigger to 55%
- B. Set the VM CPU Usage (%) Alert trigger to 75% and the VM Memory Usage (%) Warning trigger to 55%
- C. Set the VM CPU Usage (%) Warning trigger to 65% and the VM Memory Usage (%) Warning trigger to 45%
- D. Set the Trigger if all of the conditions are satisfied radio button
- E. Set the Trigger if any of the conditions are satisfied radio button

Correct Answer: ACD

### QUESTION 5

Which three modules are optional components that can be added from the vCenter Server installer? (Choose three.)

- A. VMware vCenter Syslog Collector
- B. VMware vCenter License Server
- C. VMware vSphere Authentication Proxy
- D. VMware vCenter Host Update Utility
- E. VMware vSphere Auto Deploy



VCE & PDF

PassApply.com

<https://www.passapply.com/vcp-510.html>

2024 Latest passapply VCP-510 PDF and VCE dumps Download

---

Correct Answer: ACE

[Latest VCP-510 Dumps](#)

[VCP-510 PDF Dumps](#)

[VCP-510 Practice Test](#)