



# USMLE<sup>Q&As</sup>

United States Medical Licensing Examination

**Pass USMLE USMLE Exam with 100% Guarantee**

Free Download Real Questions & Answers **PDF** and **VCE** file from:

<https://www.passapply.com/usmle.html>

100% Passing Guarantee  
100% Money Back Assurance

Following Questions and Answers are all new published by USMLE  
Official Exam Center

-  **Instant Download** After Purchase
-  **100% Money Back** Guarantee
-  **365 Days** Free Update
-  **800,000+** Satisfied Customers





#### QUESTION 1

Lymphocytes that do not reach the thymus become \_\_\_\_\_.

- A. T-cells
- B. B-cells
- C. Plasma cells
- D. Beta cells

Correct Answer: B

---

#### QUESTION 2

Which of the following develops into: bone, connective tissue, blood, and the spleen?

- A. Notochord
- B. Endoderm
- C. Mesoderm
- D. Ectoderm

Correct Answer: C

---

#### QUESTION 3

Which of the following matches the definition: attributing of our own unwanted trait onto another person?

- A. Compensation
- B. Projection
- C. Rationalization
- D. Dysphoria

Correct Answer: B

---

#### QUESTION 4



A 50-year-old male who is a known alcoholic is brought to the emergency department by police. He complains of a productive cough with thick, bloody sputum. Vitals reveal a temperature of 38°C (100.4 °F). Physical examination reveals dullness to percussion, increased tactile fremitus and decreased breath sounds over the right lung fields. A chest radiograph is obtained which reveals consolidation in the right upper lobe. The most likely cause of these findings is a

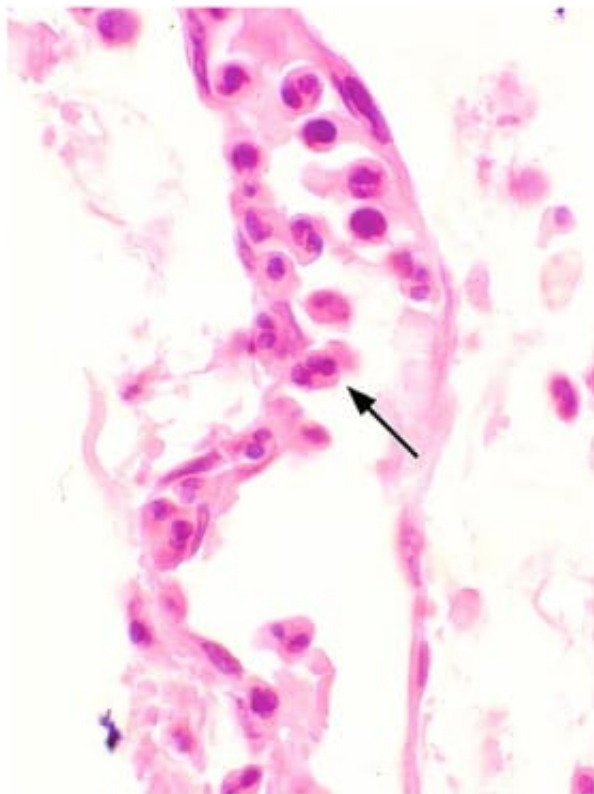
- A. gram-negative oxidase-negative bacillus
- B. gram-positive oxidase-positive bacillus
- C. gram-negative pleomorphic bacillus
- D. gram-positive catalase-negative coccus
- E. gram-positive catalase-positive coccus

Correct Answer: A

Explanation:

This patient who is an alcoholic with a productive cough with “currant jelly sputum” and lobar consolidation most likely has pneumonia caused by *Klebsiella pneumoniae*. *Klebsiella pneumoniae* is a gram-negative, oxidase-negative rod which is part of the intestinal flora. It produces mucoid colonies due to polysaccharide capsules and causes aspiration pneumonia in diabetics and alcoholics. It is also associated with multidrug resistance. Treatment is with a third-generation cephalosporin with or without an aminoglycoside.

#### QUESTION 5





A 63-year-old homeless man is brought to the emergency department 1 hour after police found him unresponsive. His respirations are 30/min. Crackles are heard over the left upper and the entire right lung fields. Despite appropriate lifesaving measures, he dies. A photomicrograph of a section of the right lung obtained at autopsy is shown. Which of the following mediators is the most likely cause of the position of the cell indicated by the arrow?

- A. Bradykinin
- B. C5a
- C. Histamine
- D. Nitrous oxide
- E. Prostaglandins

Correct Answer: B

[USMLE PDF Dumps](#)

[USMLE VCE Dumps](#)

[USMLE Practice Test](#)