



TMPTE^{Q&As}

TMap NEXT® Test Engineer

Pass EXIN TMPTE Exam with 100% Guarantee

Free Download Real Questions & Answers **PDF** and **VCE** file from:

<https://www.passapply.com/tmppte.html>

100% Passing Guarantee
100% Money Back Assurance

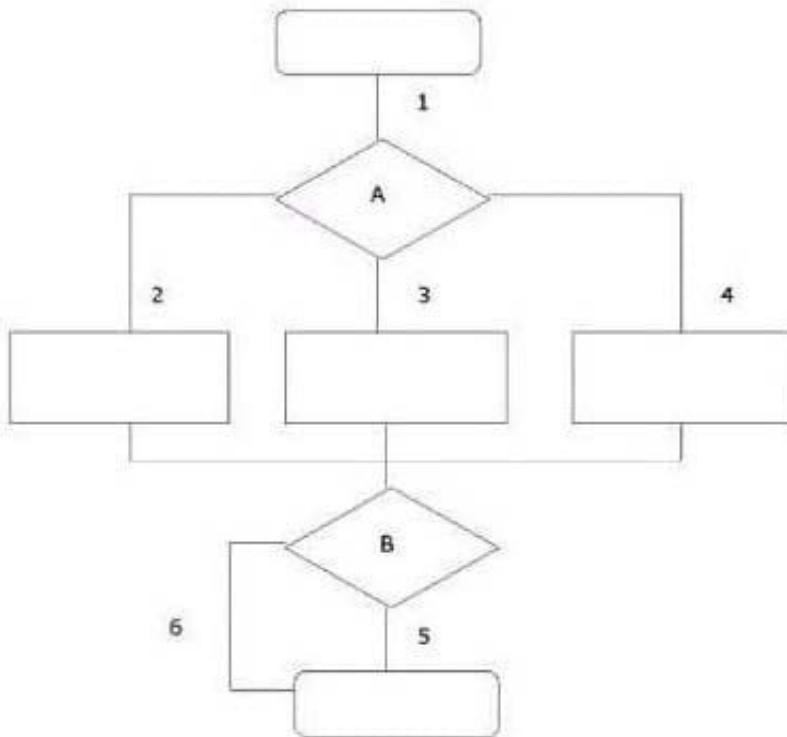
Following Questions and Answers are all new published by EXIN
Official Exam Center

- ⚙️ **Instant Download** After Purchase
- ⚙️ **100% Money Back** Guarantee
- ⚙️ **365 Days** Free Update
- ⚙️ **800,000+** Satisfied Customers



**QUESTION 1**

See the illustration below:



Which test situations can be differentiated when the coverage type paths test depth level 2 is used?

- A. 1-2; 2-3; 3-4; 2-4; 2-5; 2-6; 3-5; 3-6; 4-5; 4-6; 5-6
- B. 1-2; 1-3; 1-4; 2-5; 3-5; 4-5; 2-6; 3-6; 4-6
- C. 1-2-5; 1-2-6; 1-3-6; 1-3-5; 1-4-6; 1-4-5

Correct Answer: B

QUESTION 2

What is an advantage of the BDTM approach?

- A. a test process that can be controlled by the client
- B. a cheaper test process
- C. a risk-free production launch of the tested system

Correct Answer: A



QUESTION 3

When customer data is entered, it is mandatory to specify an e-mail address. Which test design technique can be used to test the above?

- A. Data Cycle Test
- B. Process Cycle Test
- C. Syntactic Test

Correct Answer: C

QUESTION 4

What is recorded in a test plan?

- A. the initial situation, action and predicted result
- B. the test situations to be tested
- C. the division into test units and the test techniques to be used
- D. a stepped plan for the test execution

Correct Answer: C

QUESTION 5

Which test design technique can be used to test performance?

- A. Data Cycle Test
- B. Process Cycle Test
- C. Real-Life Test

Correct Answer: C
