



QV_DEVELOPER_01^{Q&As}

QlikView 11 Developer Certification Examination

Pass QlikView QV_DEVELOPER_01 Exam with 100% Guarantee

Free Download Real Questions & Answers **PDF** and **VCE** file from:

https://www.passapply.com/qv_developer_01.html

100% Passing Guarantee
100% Money Back Assurance

Following Questions and Answers are all new published by QlikView
Official Exam Center

- ⚙ **Instant Download** After Purchase
- ⚙ **100% Money Back** Guarantee
- ⚙ **365 Days** Free Update
- ⚙ **800,000+** Satisfied Customers





QUESTION 1

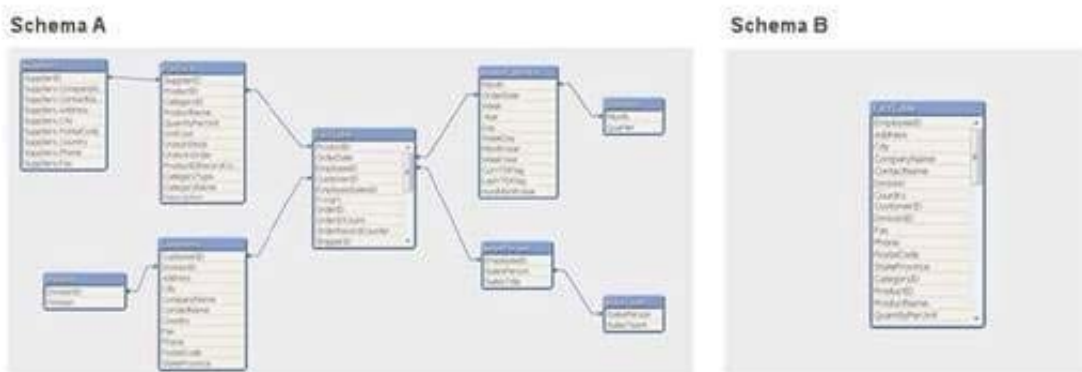
A customer has multiple bar charts comparing different metrics. All charts contain a single Expression all with the Dimension CustomerID. The charts are sorted by Y-Value Descending. Some Customers have Y-Values of zero for some metrics and not others. How can the designer show the same color bar for a single CustomerID in all the charts?

- A. Properties > Colors and then define colors 1 - 6 with specific RGB values
- B. Properties > Colors and then check the Multicolored and Persistent Colors checkboxes
- C. Properties > Visual Cues and then set the Upper and Lower colors using specific RGB values
- D. Properties > Presentation and then define the Error Bars colors with a specific RGB value

Correct Answer: B

QUESTION 2

Refer to the exhibit below.



Schema A displayed in the exhibit has been transformed into schema B. How can the before and after schemas be described?

- A. The snowflake schema has been transformed into a de-normalized schema.
- B. The snowflake schema has been transformed into a normalized schema.
- C. The star schema has been transformed into a de-normalized schema.
- D. The star schema has been transformed into a normalized schema.

Correct Answer: A

QUESTION 3

Refer to the exhibit below.



Data		Legacy Report		QlikView Report	
Year	Customer	Year	Customers	Year	Customers
2009	A	2009	3	2009	3
2010	A	2010	4	2010	4
2009	B	Total	7	Total	5
2009	C				
2010	C				
2010	D				
2010	E				

A QlikView report does not match the legacy report it was designed to replace. The purpose of the report is to count the number of customers per year and in total.

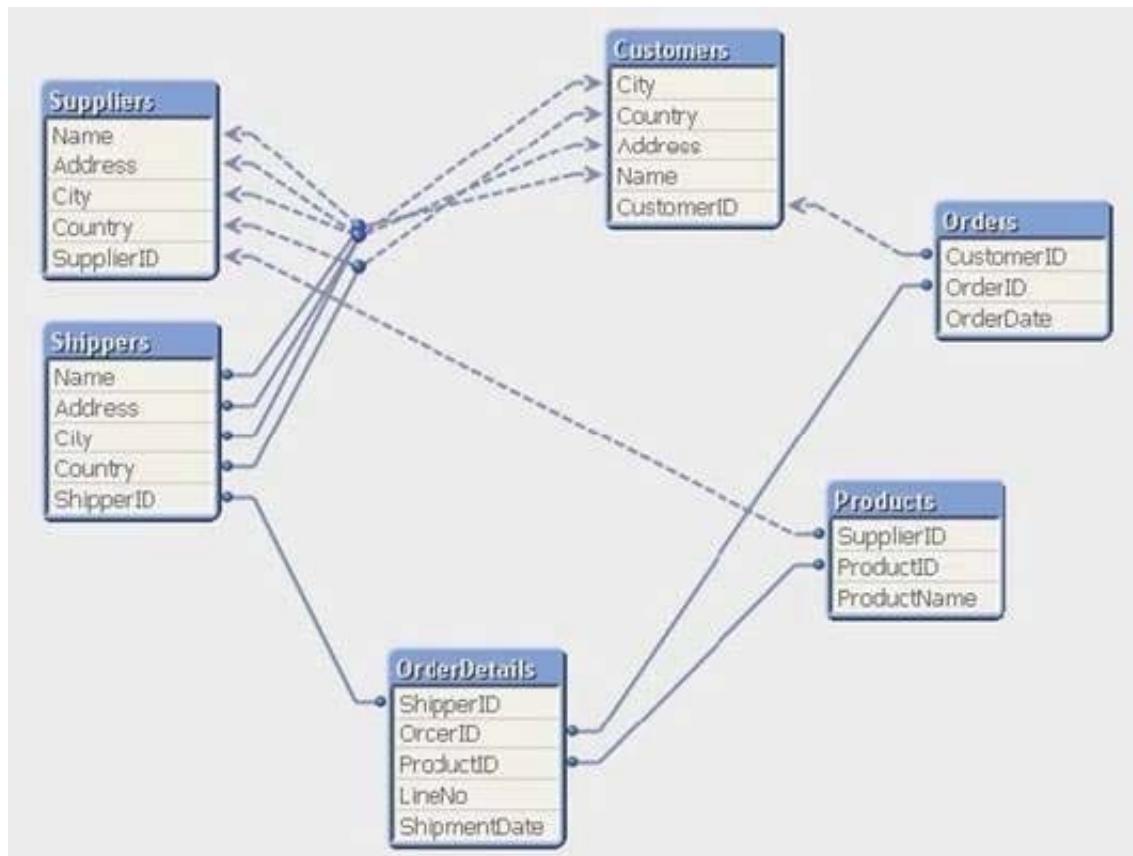
Why is there a difference between the Total row values in the two reports?

- A. The legacy report calculates the total customer occurrences, while the QlikView report counts only distinct customers.
- B. The legacy report calculates the total customer occurrences, while the QlikView report calculates the customer ranking.
- C. The legacy report totals the number of customers correctly, while the QlikView report is dropping records.
- D. The legacy report totals the number of customers correctly, while the QlikView total row is set to sum of rows.

Correct Answer: A

QUESTION 4

A customer has an Actual sales fact table aggregated at the transactional level and a Budgeted sales fact table aggregated at the monthly level. The tables share many of the same dimensional fields.



How can a developer form the data model?

- A. qualify both tables and Unqualify all shared fields
- B. left join the Budgeted sales table onto the fact table using Month as the key
- C. concatenate Load the Budgeted sales table into the Actual sales table loading shared fields as NULL
- D. create a link table containing the dimensional fields then link each fact table using a concatenated key

Correct Answer: D

QUESTION 5

A customer has a set of date values in different formats.

Some dates are in Julian date format; Some dates are text strings.

How can a developer ensure the data is loaded in a consistent format?

- A. change the default DateFormat variable assignment on the Main script tab
- B. use the Date function to format the field during load
- C. use the Alt function with different Date# functions
- D. use the Lookup function with a format table



VCE & PDF

PassApply.com

https://www.passapply.com/qv_developer_01.html

2024 Latest passapply QV_DEVELOPER_01 PDF and VCE dumps Download

Correct Answer: C

[QV_DEVELOPER_01 PDF
Dumps](#)

[QV_DEVELOPER_01 VCE
Dumps](#)

[QV_DEVELOPER_01
Braindumps](#)