



# QV\_DEVELOPER\_01<sup>Q&As</sup>

QlikView 11 Developer Certification Examination

**Pass QlikView QV\_DEVELOPER\_01 Exam with 100% Guarantee**

Free Download Real Questions & Answers **PDF** and **VCE** file from:

[https://www.passapply.com/qv\\_developer\\_01.html](https://www.passapply.com/qv_developer_01.html)

100% Passing Guarantee  
100% Money Back Assurance

Following Questions and Answers are all new published by QlikView  
Official Exam Center

-  **Instant Download** After Purchase
-  **100% Money Back** Guarantee
-  **365 Days** Free Update
-  **800,000+** Satisfied Customers





### QUESTION 1

A customer with a complex chart is experiencing performance issues when the organization's users view the chart without first applying several filters.

A designer needs to place a restriction on the chart so that the users are forced to make a selection before QlikView will calculate and render the chart.

Which common object property can the designer use to accomplish this?

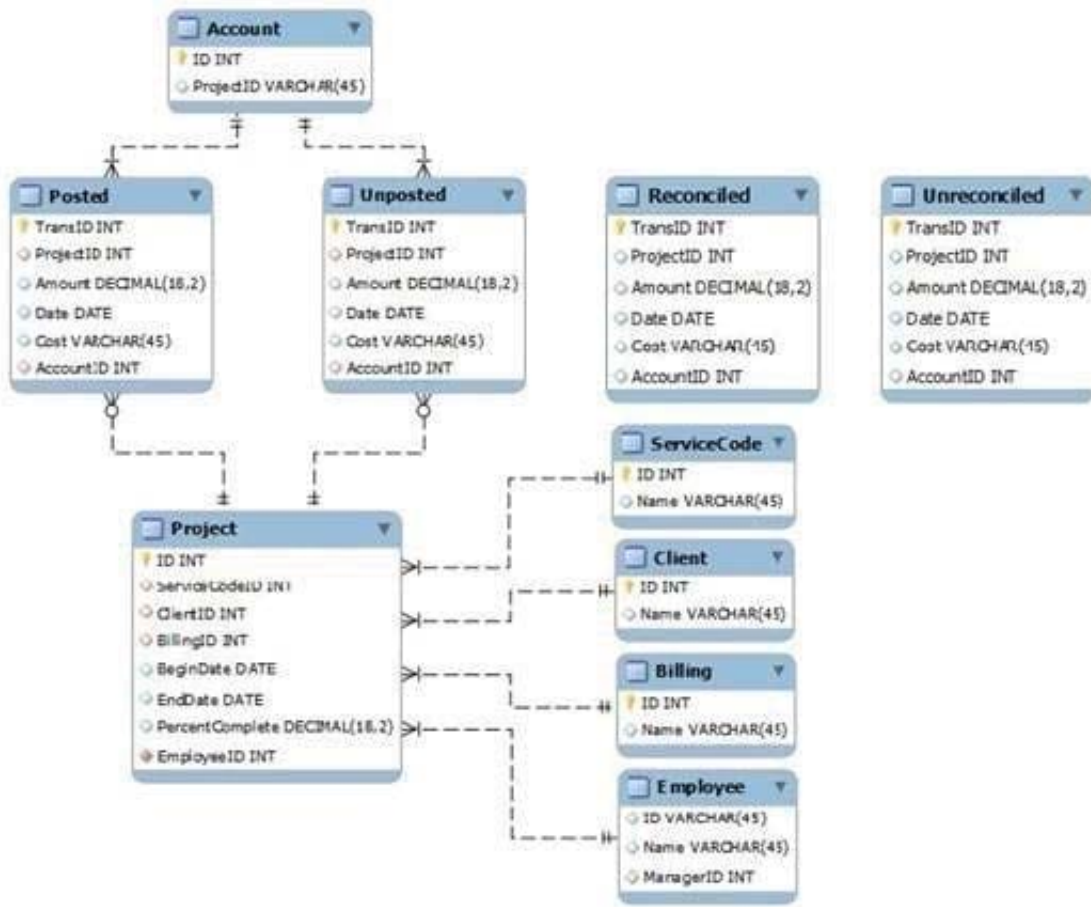
- A. the Help Text property on the Caption tab to enter instructions directing the user to make a selection and filter their data before performing their analysis
- B. the Auto Minimize property on the Caption tab so that the chart will be minimized and not calculate or render until the user has first made a selection and restored the chart
- C. the Calculate Condition property on the General tab to create a control condition that will keep the chart from calculating until user has filtered the data
- D. the size to Data property on the Layout tab to automatically select the filter criteria to the chart

Correct Answer: C

---

### QUESTION 2

Refer to the exhibit.



A customer needs to analyze transactions across the Dimensions and Metrics identified below.

Required Dimensions:

Project ID

Month

Year Account ID Transaction Type Client ID Required Metrics: Number of transactions Total Amount Total Cost Average Amount Average Cost

Which approach will provide the most effective QlikView data model to meet the customer's requirements while optimizing performance and maintaining accuracy?

- A. build a Link Table to connect the four transaction tables and add a summary table with pre-calculated counts, totals, and averages
- B. build a Link Table to connect the four transaction tables and alias fields that must be kept in their respective table
- C. concatenate the four transaction tables and add a summary table with pre-calculated counts, totals, and averages
- D. concatenate the four transaction tables and add fields to identify the record type and count flag
- E. keep the four transaction tables separate and qualify the names to control correct linkage

Correct Answer: D



### QUESTION 3

Which QlikView script should a developer add to a Load script to output the resulting number of rows from a joining Load statement to the script Execution Progress window and the script log file?

- A. LET vNumRows = NoOfRows(\\TableName\\); ECHO \\Resulting Rows = \$(vNumRows)\\;
- B. SET vNumRows = NoOfRows(\\TableName\\); ECHO \\Resulting Rows = \$(vNumRows)\\;
- C. LET vNumRows = NoOfRows(\\TableName\\); PRINT \\Resulting Rows = \$(vNumRows)\\;
- D. SET vNumRows = NoOfRows(\\TableName\\); Response.Write \\Resulting Rows = \$(vNumRows)\\;
- E. LET vNumRows = NoOfRows(\\TableName\\); TRACE \\Resulting Rows = \$(vNumRows)\\;

Correct Answer: E

---

### QUESTION 4

A global sales organization needs sales figures in both the local currencies and the corporate standard of \$USD.

How can a developer achieve this goal and enable users to only consume a single Document CAL?

- A. create a separate QVW containing values in the data model for both the local and \$USD currency amounts
- B. create a single QVW and add a table containing currency multipliers while using \$USD as a baseline currency
- C. create a separate QVW for each currency (\$USD is considered its own currency) and document chain them all together
- D. create a single QVW with duplicate tables for each currency in data islands and associate each data island to each user or group

Correct Answer: B

---

### QUESTION 5

Refer to the exhibit to the right.



Customers
Address
City
CompanyName
ContactName
Country
CustomerID
DivisionID
Fax
Phone
PostalCode
StateProvince

Fax  
Information density: 76%

What can a developer determine from the exhibit about the values in the Fax field?

- A. The Fax field has NULL values for 24 percent of the records.
- B. The Fax field has blanks for 24 percent of the records.
- C. The Fax field has 76 percent incomplete invalid fax numbers.
- D. On average, 76 percent of the Fax field values are non-spaces.
- E. The longest Fax value is 76 percent of the assigned field length.

Correct Answer: A

[QV DEVELOPER\\_01 PDF Dumps](#)

[QV DEVELOPER\\_01 Study Guide](#)

[QV DEVELOPER\\_01 Braindumps](#)