



PMI-001^{Q&As}

Project Management Professional

Pass PMI PMI-001 Exam with 100% Guarantee

Free Download Real Questions & Answers **PDF** and **VCE** file from:

<https://www.passapply.com/pmi-001.html>

100% Passing Guarantee
100% Money Back Assurance

Following Questions and Answers are all new published by PMI Official Exam Center

-  **Instant Download** After Purchase
-  **100% Money Back** Guarantee
-  **365 Days** Free Update
-  **800,000+** Satisfied Customers





QUESTION 1

A method of obtaining early feedback on requirements by providing a working model of the expected product before actually building is known as:

- A. Benchmarking.
- B. Context diagrams.
- C. Brainstorming.
- D. Prototyping.

Correct Answer: D

QUESTION 2

Processes in the Planning Process Group are typically carried out during which part of the project life cycle?

- A. Only once, at the beginning
- B. At the beginning and the end
- C. Once during each phase
- D. Repeatedly

Correct Answer: D

QUESTION 3

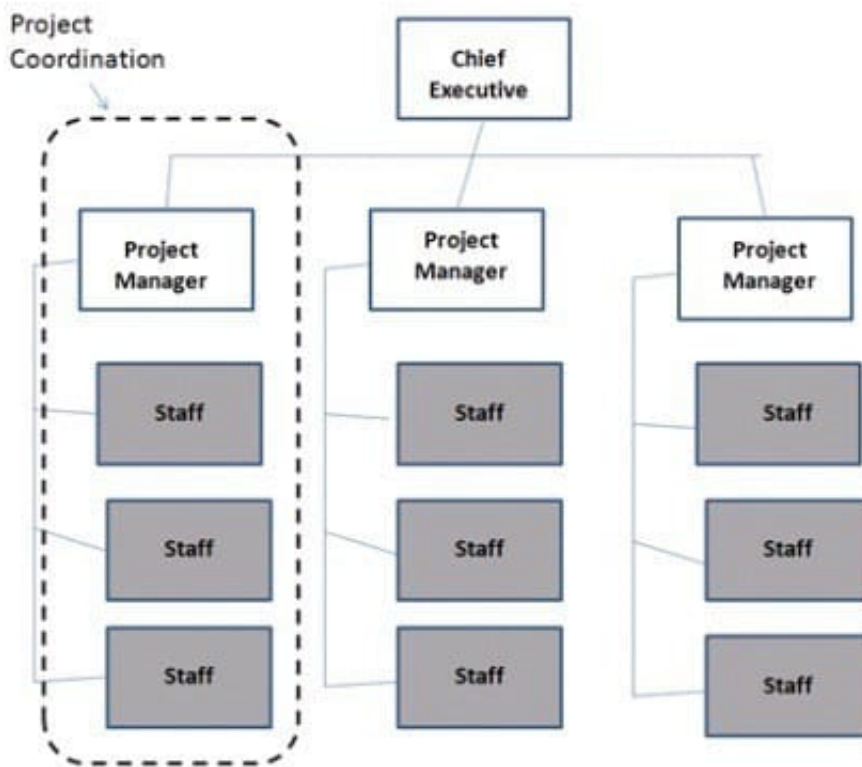
Sensitivity analysis is typically displayed as a/an:

- A. Decision tree diagram.
- B. Tornado diagram.
- C. Pareto diagram.
- D. Ishikawa diagram.

Correct Answer: B

QUESTION 4

Which type of organizational structure is displayed in the diagram provided?



- A. Balanced matrix
- B. Projectized
- C. Strong matrix
- D. Functional

Correct Answer: B

QUESTION 5

The links between the processes in the Process Groups are often:

- A. Intuitive
- B. Iterative
- C. Measured
- D. Monitored

Correct Answer: B