



# OMG-OCUP-100<sup>Q&As</sup>

OMG-Certified UML Professional Fundamental Exam

**Pass OMG OMG-OCUP-100 Exam with 100% Guarantee**

Free Download Real Questions & Answers **PDF** and **VCE** file from:

<https://www.passapply.com/omg-ocup-100.html>

100% Passing Guarantee  
100% Money Back Assurance

Following Questions and Answers are all new published by OMG  
Official Exam Center

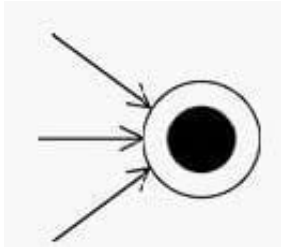
-  **Instant Download** After Purchase
-  **100% Money Back** Guarantee
-  **365 Days** Free Update
-  **800,000+** Satisfied Customers





### QUESTION 1

A circle with a solid circle inside and three incoming arrows is depicted in the exhibit. many of the arrows must provide values for the circle to have an effect?



- A. none
- B. one
- C. two
- D. three

Correct Answer: B

---

### QUESTION 2

What notation may be added to the line connecting a use case with an actor to indicate that the actor can participate in several instances of the use case at the same time?

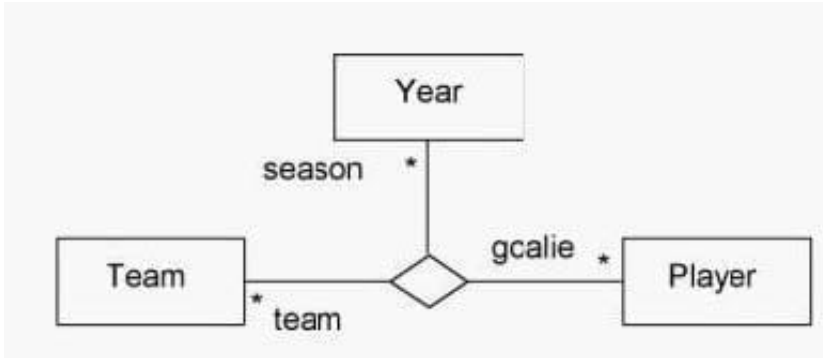
- A. near the actor 0..\*
- B. near the actor
- C. near the actor {many}
- D. near the use case oval\*
- E. near the use case oval{\*}

Correct Answer: D

---

### QUESTION 3

What does the diamond symbolize in the diagram?

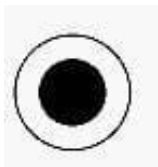


- A. decision point between three classes
- B. three-way message sent to three classes
- C. aggregation of team and goalie objects for a particular season
- D. binary association between instances of Team, Player, and Year
- E. ternary association between instances of Team, Player, and Year

Correct Answer: E

#### QUESTION 4

What does role with a solid circle inside (as depicted in the exhibit) represent in UML 2.0 activity diagrams?



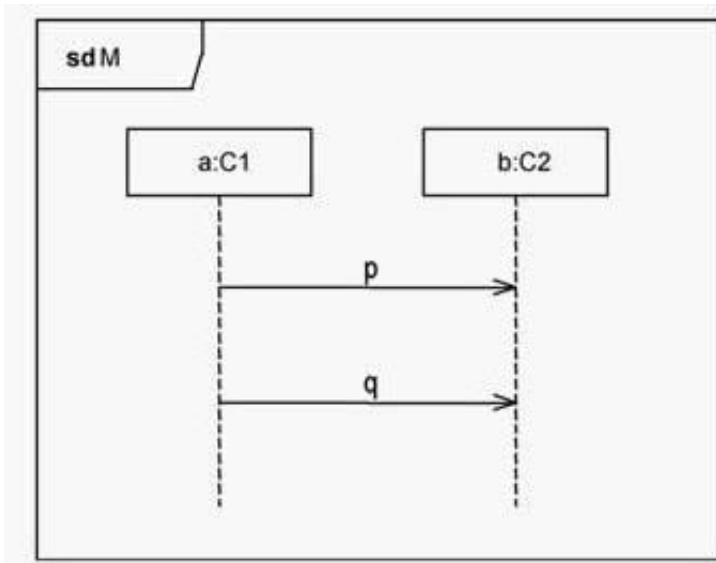
- A. joins
- B. forks
- C. merges
- D. decisions
- E. initial nodes
- F. flow final nodes
- G. activity final nodes

Correct Answer: G

#### QUESTION 5



In the exhibit, there is one element with the identifier b. is true about this element?



- A. b is a class.
- B. b is of the type C2.
- C. b is defined local to M.
- D. b is contained in class C2.
- E. b must be a property of a composite structure.

Correct Answer: B

[Latest OMG-OCUP-100 Dumps](#)

[OMG-OCUP-100 PDF Dumps](#)

[OMG-OCUP-100 Exam Questions](#)