



JN0-692^{Q&As}

Service Provider Routing and Switching Support, Professional

Pass Juniper JN0-692 Exam with 100% Guarantee

Free Download Real Questions & Answers **PDF** and **VCE** file from:

<https://www.passapply.com/jn0-692.html>

100% Passing Guarantee
100% Money Back Assurance

Following Questions and Answers are all new published by Juniper
Official Exam Center

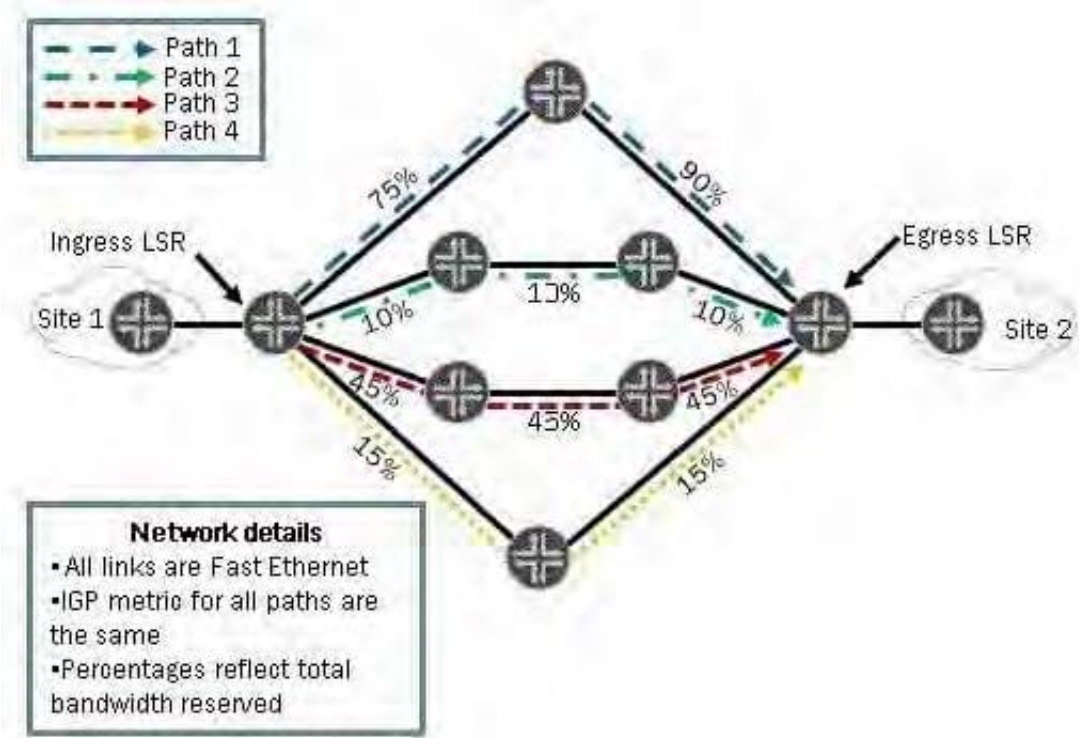
-  **Instant Download** After Purchase
-  **100% Money Back** Guarantee
-  **365 Days** Free Update
-  **800,000+** Satisfied Customers





QUESTION 1

Click the Exhibit button.



You have an MPLS network and you have configured least-fill as your CSPF tiebreaker.

Using the information in the exhibit, which path will be used to signal a new LSP requiring 12 Mbps?

- A. Path 1
- B. Path 2
- C. Path 3
- D. Path 4

Correct Answer: D

QUESTION 2

Click the Exhibit button.



```
[edit]
root@R3# run show isis database
IS-IS level 1 link-state database:
LSP ID                Sequence Checksum Lifetime Attributes
R3.00-00              0x1     0x2748    1146 L1 L2
  1 ISPs

IS-IS level 2 link-state database:
LSP ID                Sequence Checksum Lifetime Attributes
R4.00-00              0x2     0xda98    1150 L1 L2
R3.00-00              0x2     0x2de1    1152 L1 L2
R3.02-00              0x1     0x48c6    1152 L1 L2
  3 ISPs
```

Based on the output in the exhibit, which statement is correct?

- A. R4 has been configured with an IS-IS export policy and is announcing external routing information.
- B. R3 and R4 have an adjacency at both level 1 and level 2.
- C. R3 has been configured so that it is not used for transit traffic.
- D. R3 and R4 have only a level 2 adjacency.

Correct Answer: D

QUESTION 3

You are configuring CoS schedulers on an M Series router. For some queues, you want to limit throughput to the configured transmit rate, and buffer excess traffic.

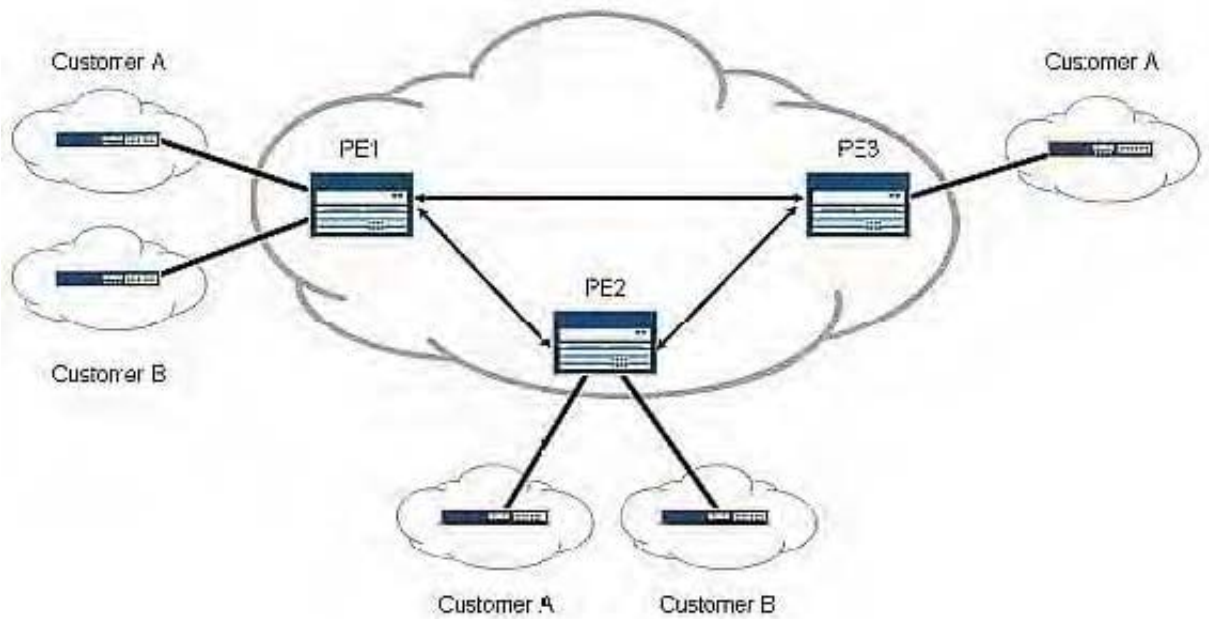
Which two transmission rate options can you use? (Choose two.)

- A. exact
- B. rate-limit
- C. remainder
- D. shaping-rate

Correct Answer: AD

QUESTION 4

Click the Exhibit button.



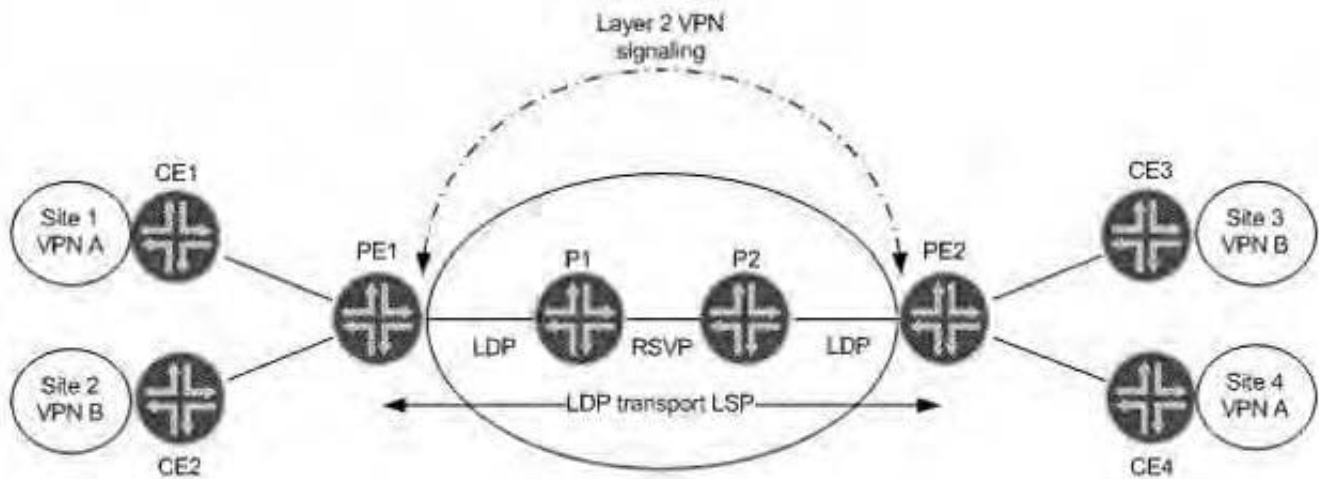
Given the existing operational network shown in the exhibit, you now want to add a remote site for Customer B to the PE3 router. This change should not have an effect on the existing BGP sessions between the PE routers. Which Layer 3 VPN scaling mechanism allows PE3 to begin receiving Customer B routes?

- A. route origin
- B. route refresh
- C. route reflection
- D. route target filtering

Correct Answer: B

QUESTION 5

Click the Exhibit button.



Referring to the exhibit, which statement is true assuming BGP Layer 2 VPN signaling?

- A. PE1 receives two BGP NLRI updates, each containing a remote site ID, a label base, and Layer 2 encapsulation.
- B. PE2 receives one BGP NLRI update containing a remote site ID, a label base, and Layer 2 encapsulation.
- C. PE2 receives two BGP NLRI updates, each containing a remote site ID, label vc, and Layer 2 encapsulation.
- D. PE1 receives one BGP NLRI for VPN A containing only a remote site ID and a label offset value.

Correct Answer: A

[Latest JN0-692 Dumps](#)

[JN0-692 Exam Questions](#)

[JN0-692 Brindumps](#)