



JN0-692^{Q&As}

Service Provider Routing and Switching Support, Professional

Pass Juniper JN0-692 Exam with 100% Guarantee

Free Download Real Questions & Answers **PDF** and **VCE** file from:

<https://www.passapply.com/jn0-692.html>

100% Passing Guarantee
100% Money Back Assurance

Following Questions and Answers are all new published by Juniper
Official Exam Center

-  **Instant Download** After Purchase
-  **100% Money Back** Guarantee
-  **365 Days** Free Update
-  **800,000+** Satisfied Customers





QUESTION 1

Which statement is true about IS-IS?

- A. IS-IS level 1 internal routes are announced to level 2 by default.
- B. All IS-IS level 1 routes are announced to level 2 by default.
- C. IS-IS level 2 internal routes are announced to level 1 by default.
- D. IS-IS does not share routes between level 1 and level 2 by default.

Correct Answer: A

QUESTION 2

Which configuration excerpt will advertise all local IPv4 and IPv6 destinations to the network?



```
A. protocols {
  ospf {
    area 0.0.0.0 {
      family inet {
        interface all;
      }
      family inet6 {
        interface all;
      }
    }
  }
}
```

```
B. protocols {
  ospf {
    export ipv6-routes;
    area 0.0.0.0 {
      interface all;
    }
  }

  policy-options {
    policy-statement ipv6-routes {
      term get-ipv6 {
        from family inet6;
        then accept;
      }
    }
  }
}
```

```
C. protocols {
  ospf {
    area 0.0.0.0 {
      interface all;
    }
  }
  ospf3 {
    area 0.0.0.0 {
      interface all;
    }
  }
}
```

```
D. protocols {
  ospf3 {
    export ipv4-routes;
    area 0.0.0.0 {
      interface all;
    }
  }

  policy-options {
    policy-statement ipv4-routes {
      term get-ipv4 {
        from family inet;
        then accept;
      }
    }
  }
}
```

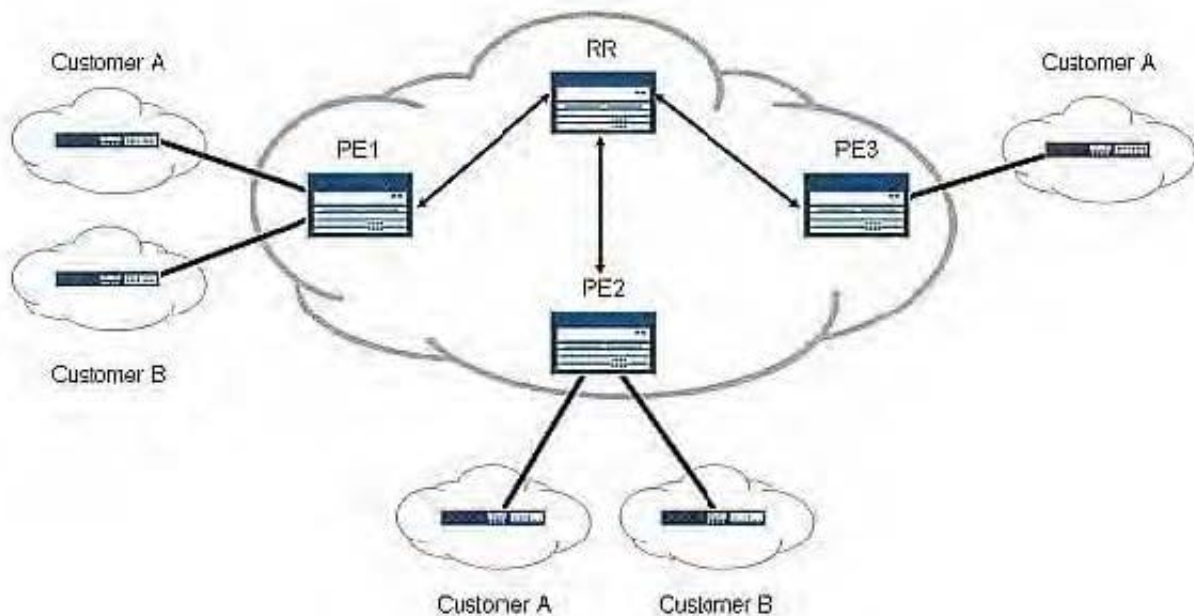


- A. Option A
- B. Option B
- C. Option C
- D. Option D

Correct Answer: C

QUESTION 3

Click the Exhibit button.



Referring to the exhibit, you want to save CPU processing load on the PE3 router by preventing the reception of routes belonging to Customer B. Which Layer 3 VPN scaling mechanism provides this functionality?

- A. route origin
- B. route refresh
- C. route reflection
- D. route target filtering

Correct Answer: D

QUESTION 4

Click the Exhibit button.



```
[edit]
root@R4# run show isis database
IS-IS level 1 link-state database:
LSP ID                Sequence  Checksum  Lifetime  Attributes
R4.00-00              0x2      0xcfbcb  1072     L1 L2
R3.00-00              0x3      0xf316   1192     L1 L2 Overload
R3.02-00              0x2      0xc17e   1192     L1 L2
  3 LSPs

IS-IS level 2 link-state database:
LSP ID                Sequence  Checksum  Lifetime  Attributes
R4.00-00              0x2      0x4baa   1073     L1 L2
  1 LSPs
```

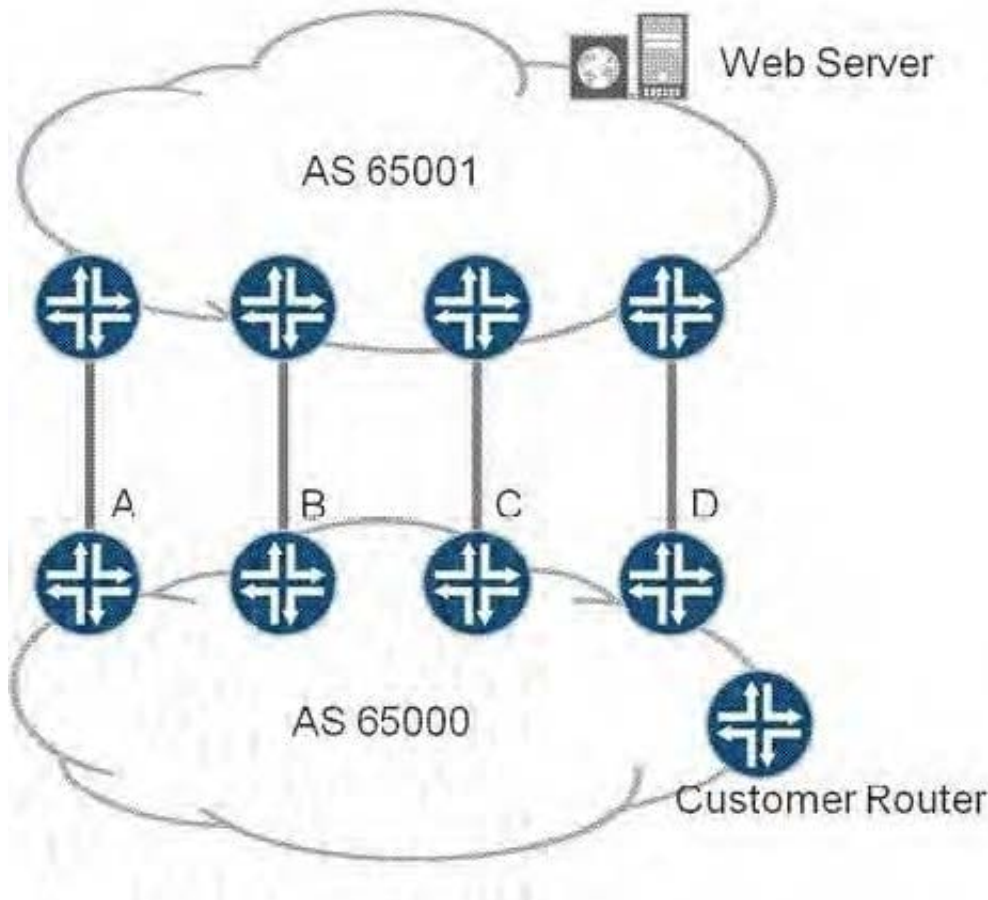
Based on the output in the exhibit, which statement is correct?

- A. R4 has been configured with an IS-IS export policy and is announcing external routing information.
- B. R3 and R4 have an adjacency at both level 1 and level 2.
- C. R3 has been configured so that it is not used for transit traffic.
- D. R3 and R4 are both attached to other IS-IS areas.

Correct Answer: C

QUESTION 5

Click the Exhibit button.



Router A: Local Pref 110, IGP Cost 1000 Router B: Local Pref 100, IGP Cost 200 Router C: Local Pref 110, IGP Cost 900 Router D: Local Pref 100, IGP Cost 1000 Through which link will traffic to the Web server leave your network (AS 65000) from the customer router?

You are the administrator of AS 65000. There are four links between your network (AS 65000) and your upstream provider (AS 65001). You have an import policy on all of your routers. The routing table on the customer router has four routes to the Web server as follows:

- A. Router A
- B. Router B
- C. Router C
- D. Router D

Correct Answer: C

[Latest JN0-692 Dumps](#)

[JN0-692 PDF Dumps](#)

[JN0-692 VCE Dumps](#)