



JN0-692^{Q&As}

Service Provider Routing and Switching Support, Professional

Pass Juniper JN0-692 Exam with 100% Guarantee

Free Download Real Questions & Answers **PDF** and **VCE** file from:

<https://www.passapply.com/jn0-692.html>

100% Passing Guarantee
100% Money Back Assurance

Following Questions and Answers are all new published by Juniper
Official Exam Center

-  **Instant Download** After Purchase
-  **100% Money Back** Guarantee
-  **365 Days** Free Update
-  **800,000+** Satisfied Customers



**QUESTION 1**

Click the Exhibit button.

```
customer-vpn {  
    instance-type vrf;  
    interface ge-0/0/0.0;  
    route-distinguisher 172.16.1.1:1;  
    vrf-target target:65000:100;  
}
```

You are configuring a new PE router in your Layer 3 VPN. A remote PE router is using the configuration shown in the exhibit. Which configuration is needed to receive customer-vpn routes from the remote PE?



- A. customer-vpn {
 instance-type vrf;
 interface ge-0/0/1.0;
 route-distinguisher 172.16.1.2:1;
 vrf-target {
 export target:65000:100;
 import target:65000:200;
 }
}
- B. customer-vpn {
 instance-type vrf;
 interface ge-0/0/1.0;
 route-distinguisher 172.16.1.2:1;
 vrf-target {
 export target:65000:200;
 import target:65000:200;
 }
}
- C. customer-vpn {
 instance-type vrf;
 interface ge-0/0/1.0;
 route-distinguisher 172.16.1.2:1;
 vrf-target target:65000:100;
}
- D. customer-vpn {
 instance-type vrf;
 interface ge-0/0/1.0;
 route-distinguisher 172.16.1.2:1;
 vrf-target target:65000:200;
}

A. Option A

B. Option B

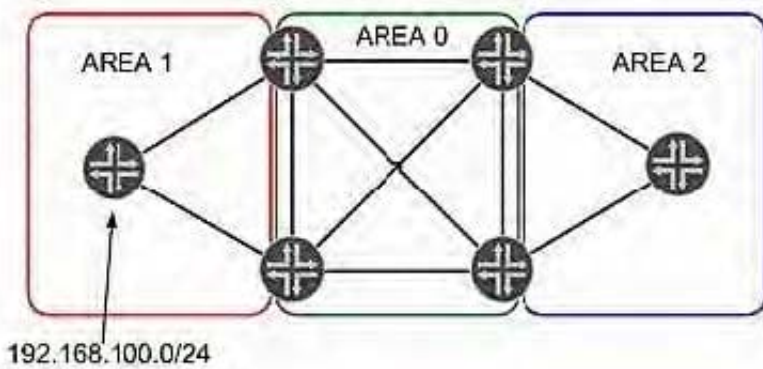
C. Option C

D. Option D

Correct Answer: C

QUESTION 2

Click the Exhibit button.



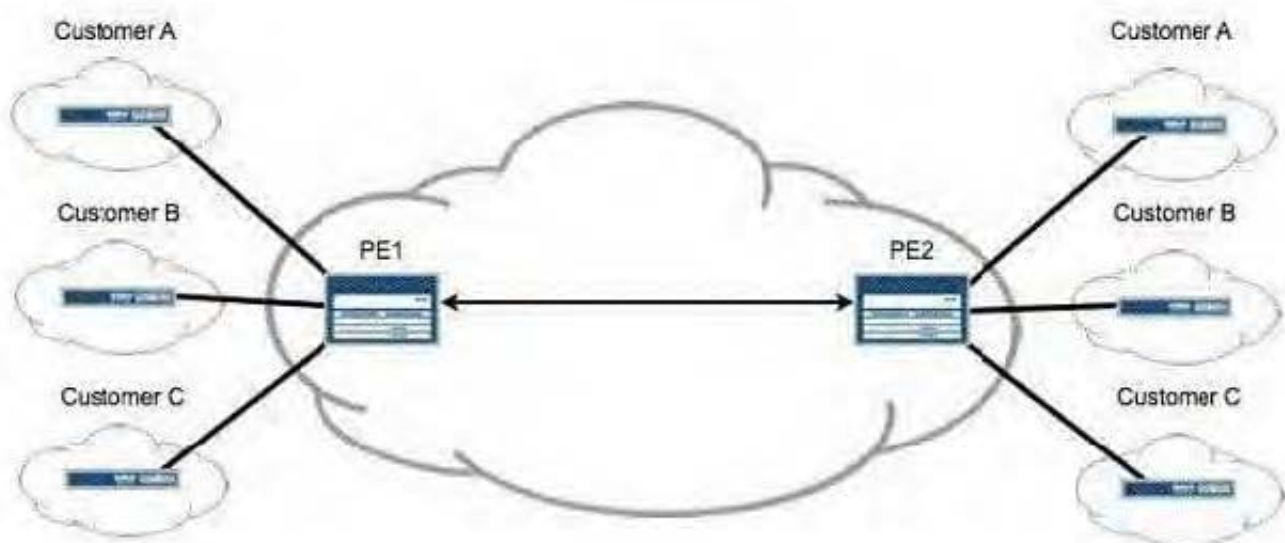
In the exhibit, Area 1 and Area 2 are configured as not-so-stubby areas. RIP network 192.168.100.0/24 is redistributed into OSPF in Area 1. Which three statements are true? (Choose three.)

- A. Network 192.168.100.0/24 is advertised in a Type 7 LSA in Area 1.
- B. Network 192.168.100.0/24 is advertised in a Type 7 LSA in Area 0.
- C. Network 192.168.100.0/24 is advertised in a Type 5 LSA in Area 0.
- D. The area border router between Area 0 and Area 2 converts network 192.168.100.0/24 to a Type 7 LSA.
- E. Area 2 does not see the network 192.168.100.0/24 in its link-state database.

Correct Answer: ACE

QUESTION 3

Click the Exhibit button.



After adding Customer C to your Layer 3 VPN, you must validate that PE2 is receiving VPN routes for all customers attached to PE1, as shown in the exhibit. Which operational command displays this information?



- A. show route instance
- B. show route summary
- C. show route table bgp.l3vpn.0
- D. show route table customer-c.inet.0

Correct Answer: C

QUESTION 4

Click the Exhibit button.

```
[edit]
jorg@pel# show routing-instances mcast-pe-vrf
instance-type vrf;
interface ge-1/0/9.101;
interface lo0.1;
provider-tunnel {
  rsvp-te {
    label-switched-path template {
      mvpn-example;
    }
  }
}
protocols {
..
  pim {
    rp {
      local {
        address 192.168.13.3;
      }
    }
    interfaces all {
      mode sparse;
    }
  }
  mvpn {
    mvpn-mode {
      spt-only;
    }
  }
..
}
```

A customer has the configuration shown in the exhibit applied to the VRF C-PIM domain. What can you determine from this configuration?

- A. The PE is configured for selective PMSI (S-PMSI) only.
- B. The C-RP is collocated on one of the PEs in the MVPN.



- C. The MVPN is not working because the receiver-site command is missing.
- D. Multicast traffic will not switch to the S-PMSI because the vpn-group-address command (data MDT) is missing.

Correct Answer: B

QUESTION 5

Click the Exhibit button.



As shown in the exhibit, you have an LSP established from R1 to R4. Your network experiences a link failure between R2 and R3. Which statement is correct?

- A. A ResvTear message is sent toward the egress router.
- B. A ResvConf message is sent toward the ingress router.
- C. A PathErr message is sent toward the egress router.
- D. A ResvTear message is sent toward the ingress router.

Correct Answer: D

[JN0-692 VCE Dumps](#)

[JN0-692 Practice Test](#)

[JN0-692 Exam Questions](#)