



# JN0-660<sup>Q&As</sup>

Service Provider Routing and Switching, Professional

## Pass Juniper JN0-660 Exam with 100% Guarantee

Free Download Real Questions & Answers **PDF** and **VCE** file from:

<https://www.passapply.com/jn0-660.html>

100% Passing Guarantee  
100% Money Back Assurance

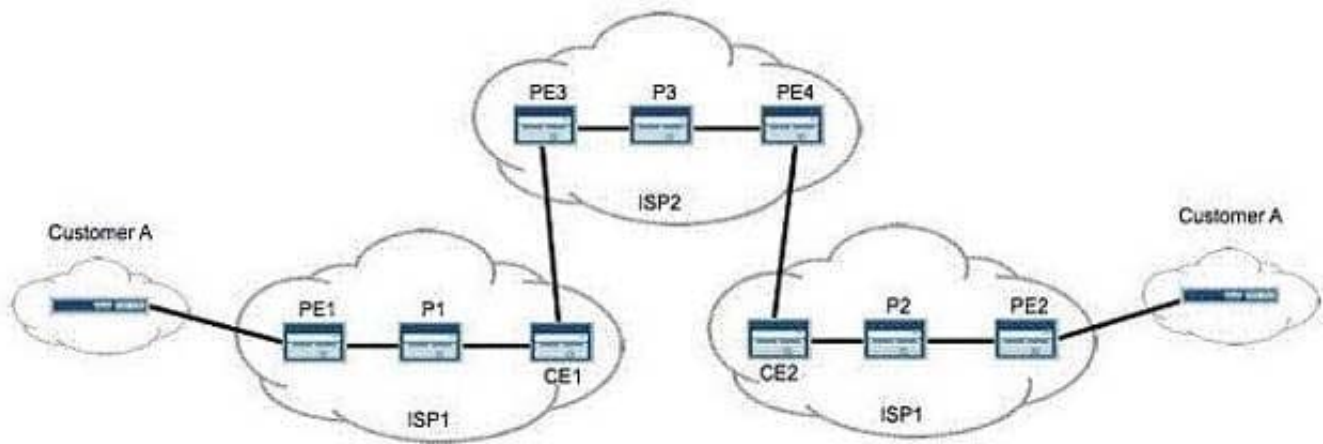
Following Questions and Answers are all new published by Juniper  
Official Exam Center

-  **Instant Download** After Purchase
-  **100% Money Back** Guarantee
-  **365 Days** Free Update
-  **800,000+** Satisfied Customers



**QUESTION 1**

Click the Exhibit button.



Referring to the exhibit, PE2 requires the loopback of PE1 to appear in the inet.3 routing table as a labeled route. Which configuration parameter is specifically required to support this?

- A. resolve-vpn
- B. family inet-vpn
- C. traffic-engineering bgp-igp
- D. traffic-engineering mpls-forwarding

Correct Answer: A

---

**QUESTION 2**

Click the Exhibit button.



[edit]

```
user@R1# show interfaces so-0/0/0
```

```
unit 0 {
```

```
    family inet {
```

```
        address 192.168.8.45/30;
```

```
    }
```

```
}
```

[edit]

```
user@R1# show routing-options router-id
```

```
router-id 10.255.0.1;
```

[edit]

```
user@R1# show protocols ospf
```

```
area 0.0.0.1 {
```

```
    interface so-0/0/0.0;
```

```
}
```

-----

[edit]

```
user@R2# show interfaces so-1/0/0
```

```
unit 0 {
```

```
    family inet {
```

```
        address 192.168.8.45/30;
```

```
    }
```

```
}
```

[edit]

```
user@R2# show routing options router-id
```

```
router-id 10.255.0.1;
```

[edit]

```
user@R2# show protocols ospf
```

```
area 0.0.0.1 {
```

```
    interface so-1/0/0.0;
```

```
}
```



You are creating an OSPF multiarea adjacency with a link between two ABRs.

Referring to the exhibit, which configuration setting must be added to the routers to allow the second adjacency to form?

- A. You must add the second area under [edit protocols ospf] and add a policy statement exporting the respective router-id into OSPF.
- B. You must add the second area under [edit protocols ospf] and add a static route with the destination of the other ABR's router-id in the area.
- C. You must add the second area under [edit protocols ospf] and configure the respective interface as secondary in the area.
- D. You must add the second area under [edit protocols ospf] and add the respective interfaces

Correct Answer: C

### QUESTION 3

Click the Exhibit button.

```
192.168.56.1
From: 192.168.56.5, LSPstate: Up, ActiveRoute: 0
LSPname: Bypass->10.10.56.1
LSPtype: Static Configured
Suggested label received: -, Suggested label sent: -
Recovery label received: -, Recovery label sent: 299840
Resv style: 1 SE, Label in: -, Label out: 299840
Time left: -, Since: Tue Feb 22 21:27:22 2011
Tspec: rate 0bps size 0bps peak Infbps m 20 M 1500
Port number: sender 1 receiver 18914 protocol 0
Type: Bypass LSP
  Number of data route tunnel through: 0
  Number of RSVP session tunnel through: 0
PATH rcvfrom: localclient
Adspec: sent MTU 1500
Path MTU: received 1500
PATH sentto: 10.10.10.9 (ge-1/0/2.0) 2 pkts
RESV rcvfrom: 10.10.10.9 (ge-1/0/2.0) 2 pkts
Explot route: 10.10.10.9 10.10.10.6
Record route: <self> 10.10.10.9 10.10.10.6
```

Referring to the exhibit, which type of traffic protection mechanism is used for the LSP?

- A. fast-reroute
- B. link-protection
- C. node-link-protection



D. secondary

Correct Answer: B

#### QUESTION 4

Click the Exhibit button.

```
[edit]
user@host# show class-of-service
schedulers {
    voice {
        transmit-rate percent 40;
        priority strict-high;
    }
    critical {
        transmit-rate percent 25;
        priority high;
    }
    less-critical {
        transmit-rate percent 15;
        priority medium-high;
    }
    data {
        transmit-rate percent 10;
        priority medium-low;
    }
    left-over {
        transmit-rate percent 5;
        priority low;
    }
}
```

On your MX Series router, traffic using the critical scheduler is out of profile. All other data is currently in profile. Referring to the exhibit, which statement is correct?

- A. The critical queue is serviced before the less-critical queue.
- B. The critical queue is serviced after the left-over queue.
- C. The critical queue is serviced before the data queue.
- D. The critical queue is serviced before the voice queue.

Correct Answer: B

#### QUESTION 5



Which two statements are true when configuring OSPF authentication? (Choose two.)

- A. An OSPF link can support both simple password and MD5 authentication at the same time.
- B. An MD5 password requires a key ID.
- C. You can configure multiple MD5 passwords simultaneously on the same link.
- D. If the MD5 password negotiation fails, you can configure OSPF to automatically use a simple password as a backup.

Correct Answer: BC

[Latest JN0-660 Dumps](#)

[JN0-660 VCE Dumps](#)

[JN0-660 Practice Test](#)