



JN0-660^{Q&As}

Service Provider Routing and Switching, Professional

Pass Juniper JN0-660 Exam with 100% Guarantee

Free Download Real Questions & Answers **PDF** and **VCE** file from:

<https://www.passapply.com/jn0-660.html>

100% Passing Guarantee
100% Money Back Assurance

Following Questions and Answers are all new published by Juniper
Official Exam Center

- ⚙️ **Instant Download** After Purchase
- ⚙️ **100% Money Back** Guarantee
- ⚙️ **365 Days** Free Update
- ⚙️ **800,000+** Satisfied Customers



**QUESTION 1**

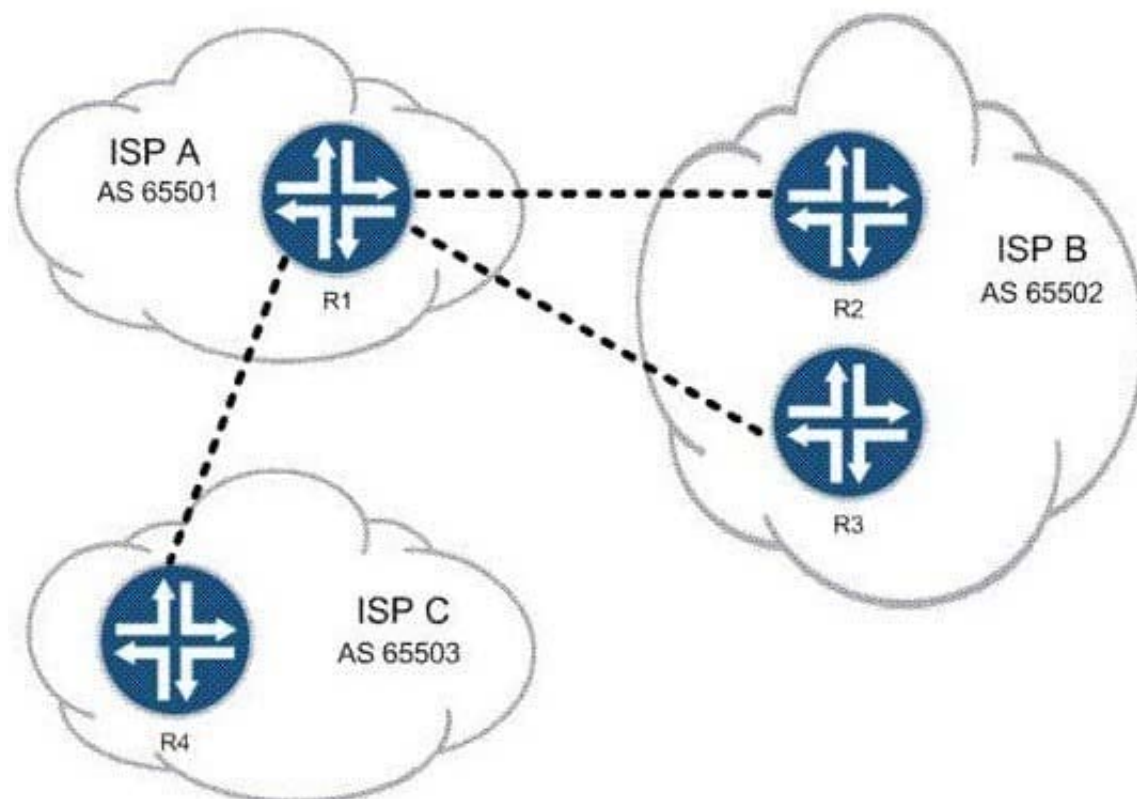
You are hired at an ISP and your new employer asks you to become familiar with the routing policy. The `42 +.*[21112]$` regular expression is in one of the policies. Which three AS paths match the regex statement? (Choose three.)

- A. 42 42 42 42 6
- B. 42 42 42 27 21
- C. 42 42 42 42 12
- D. 42 69 2112 112
- E. 42 69 212112

Correct Answer: BCE

QUESTION 2

Click the Exhibit button.



You work for ISP A. Customers of both ISP B and ISP C must be able to reach all of your customers, but your network must not allow transit traffic between ISP B and ISP C. Referring to the exhibit, which two methods could you use? (Choose two.)



- A. Use local preference to prefer the proper routes.
- B. Use the well-known no-transit community.
- C. Use policy to filter routes on AS number.
- D. Use communities to identify and filter routes.

Correct Answer: CD

QUESTION 3

Refer to the exhibit.

```
[edit protocols isis]
user@router# show
interface so-0/0/0.0 {
    level 2 disable;
}
interface fe-1/0/0.0;
interface fe-2/0/0.0 {
    passive;
}
```

You have implemented the IS-IS configuration shown in the exhibit. Which two statements are true? (Choose two.)

- A. An IS-IS adjacency can establish on the fe-2/1/0.0 interface.
- B. The SONET interface configuration allows the sharing of only Level 2 routes.
- C. The fe-1/0/0.0 interface configuration allows sharing of Level 1 and Level 2 routes.
- D. The fe-2/0/0.0 interface configuration allows advertising of its IP address into the LSPs.

Correct Answer: CD

QUESTION 4

Click the Exhibit button.



```
user@router> monitor traffic detail interface so-0/1/0 size 1514
Listening on so-0/1/0
11:55:48.470418 In ISIS(186), 30:30:30:30:30:30 > 30:30:30:30:30:30, hlen: 27, v: 1,
  sys-id-len: 6 (0), max-area: 3 (0), L2 LSP
  lsp-id: 1921.6804.8001.00-00, seq: 0x000000008, lifetime: 1189s
  checksum: 0x86c9 (correct), PDU length: 186, LIL2 IS
  Area address(es) TLV #1, length: 4
    Area address (3): 49.0001
  Protocols supported TLV #129, length: 2
    NLPID(s): IPv4, IPv6
  Traffic Engineering Router ID TLV #134, length: 4
    Traffic Engineering Router ID: 192.168.48.1
  IPv4 Interface address(es) TLV #132, length: 4
    IPv4 interface address: 192.168.48.1
  Hostname TLV #137, length: 8
    Hostname: SaoPaulo
  IPv4 Internal reachability TLV #128, length: 24
    IPv4 prefix: 192.168.48.1/32
      Default Metric: 00, Internal, Distribution: up
    IPv4 prefix: 10.222.60.0/24
      Default Metric: 10, Internal, Distribution: up
  Extended IPv4 reachability TLV #135, length: 17
    IPv4 prefix: 192.168.48.1/32
      Metric: 0, Distribution: up, no sub-TLVs present
    IPv4 prefix: 10.222.60.0/24
      Metric: 10, Distribution: up, no sub-TLVs present
  IPv4 External reachability TLV #130, length: 12
    IPv4 prefix: 192.168.49.0/24
      Default Metric: 00, Internal, Distribution: up
  Extended IPv4 reachability TLV #135, length: 3
    IPv4 prefix: 192.168.49.0/24
      Metric: 0, Distribution: up, no sub-TLVs present
  IS Reachability TLV #2, length: 12
    IsNotVirtual
    IPv4 prefix: 192.168.49.0/24
      Default Metric: 00, Internal, Distribution: up
  Extended IPv4 reachability TLV #135, length: 3
    IPv4 prefix: 192.168.49.0/24
      Metric: 0, Distribution: up, no sub-TLVs present
  IS Reachability TLV #2, length: 12
    IsNotVirtual
    IS Neighbor: 1921.6805.2001.00, Default Metric: 10, Internal
  Extended IS Reachability TLV #22, length: 23
    IS Neighbor: 1921.6805.2001.00, Metric: 10, sub-TLVs present (12)
      IPv4 interface address: 10.222.60.2
      IPv4 neighbor address: 10.222.60.1
  Authentication TLV #10, length: 17
    HMAC-MD5 password: 00bb32fd7712bcea6003e516e2333077
```

The output in the exhibit was captured on an interface. Which three statements are true about the configuration on the router with hostname SaoPaulo? (Choose three.)

- A. Wide metrics is not in use.
- B. The router has the overload bit set to "on".
- C. Authentication is enabled.
- D. System ID is 1921.6805.2001.



E. Level 2 routing is enabled.

Correct Answer: ACE

QUESTION 5

Which two statements regarding OSPFv2 or OSPFv3 authentication are correct? (Choose two.)

- A. OSPFv2 supports MD5 authentication.
- B. OSPFv2 supports MD5 or SHA authentication.
- C. OSPFv2 relies on the native security stack that uses IPsec.
- D. OSPFv3 relies on the native security stack that uses IPsec.

Correct Answer: D

[JN0-660 PDF Dumps](#)

[JN0-660 Study Guide](#)

[JN0-660 Braindumps](#)