



JN0-643^{Q&As}

Enterprise Routing and Switching, Professional (JNCIP-ENT)

Pass Juniper JN0-643 Exam with 100% Guarantee

Free Download Real Questions & Answers **PDF** and **VCE** file from:

<https://www.passapply.com/jn0-643.html>

100% Passing Guarantee
100% Money Back Assurance

Following Questions and Answers are all new published by Juniper
Official Exam Center

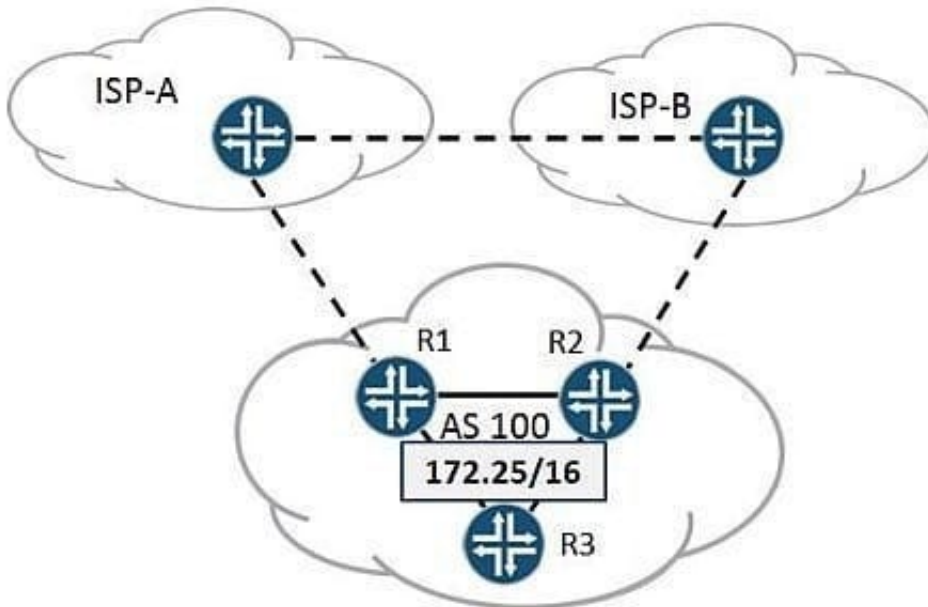
-  **Instant Download** After Purchase
-  **100% Money Back** Guarantee
-  **365 Days** Free Update
-  **800,000+** Satisfied Customers





QUESTION 1

-- Exhibit



-- Exhibit -Click the Exhibit button.

Referring to the exhibit, your AS is connected to ISP-A and ISP-B using BGP. R1 and R2 are advertising your AS's 172.25/16 prefix upstream to both ISPs, and both ISPs are providing a full BGP route table. You want to influence traffic flow

so that traffic towards your network enters through R1.

Which action would meet the requirement?

Apply the following as an export policy towards ISP-B:

A. `[edit policy-options] user@R2# show policy-statement prefer-for-inbound { term prepend { then { as-path-prepend "100 100"; accept; } } }` Apply the following as an export policy towards ISP-A:

B. `[edit policy-options] user@R1# show policy-statement prefer-for-inbound { term prepend { then { as-path-prepend "100 100"; accept; } } }` Apply the following as an export policy towards R1 and R3:

C. `[edit policy-options] user@R2# show policy-statement prefer-for-inbound { term local-pref { then { local-preference 110; accept; } } }` Apply the following as an export policy towards R2 and R3:

D. `[edit policy-options] user@R1# show policy-statement prefer-for-inbound { term local-pref { then { local-preference 110; accept; } } }`

Correct Answer: A

QUESTION 2



Which statement is true about default BGP route redistribution behavior?

- A. IBGP-learned routes are advertised only to other IBGP peers.
- B. EBGP-learned routes are redistributed into any IGP.
- C. EBGP-learned routes are advertised only to other EBGP peers.
- D. EBGP-learned routes are advertised to other IBGP and EBGP peers.

Correct Answer: B

QUESTION 3

Which three statements are correct about source specific multicast (SSM) on the junos OS? (Choose three)

- A. SSM requires the use of an RP.
- B. IT HAS AN DEDICATED address block.
- C. SSM does not require the use of an RP.
- D. SSM must use the 232/8 address range.
- E. IGMPv2 and IGMPv3 can be used with SSM.

Correct Answer: BCE

QUESTION 4

-- Exhibit -

```
user@router> show bgp summary Groups: 3 Peers: 3 Down peers: 0 Table Tot Paths Act Paths Suppressed History  
Damp State Pending inet.0 10 8 0 0 0 0 inet6.0 4 3 0 0 0 0 Peer AS InPkt OutPkt OutQ Flaps Last Up/Dwn State|  
#Active/Received/Accepted/Damped...
```

```
10.0.3.5 65550 41 52 0 2 17:45 5/5/5/0 0/0/0/0
```

```
172.16.0.6 65010 52 42 0 2 31 Establ inet.0: 3/5/5/0 inet6.0: 3/4/4/0 2001::ffff::3:5 65550 43 44 0 4 17:53 Establ inet6.0:  
0/0/0/0
```

```
user@router>
```

-- Exhibit -Click the Exhibit button.

Examine the output of the show bgp summary command shown in the exhibit.

From which BGP peer is the router receiving IPv6 routes?

- A. 10.0.3.5



- B. 172.16.0.6
- C. 2001:ffff::3:5
- D. 2001:ffff:3:5

Correct Answer: B

QUESTION 5

When using port authentication on a juniper switch, which two statements are true? (Choose two)

- A. the switch can be configured to allow 802.1x authenticating and MAC based radius authenticated on the same port at the same time
- B. the switch can allow 802.1x authentication and MAC based authentication, but cannot do both on the samepoint
- C. End clients must have an 802.1x supplicant installed to authenticate to the network
- D. Clients can be authenticated by using their MAC address and a central radius database

Correct Answer: BD

[Latest JN0-643 Dumps](#)

[JN0-643 Exam Questions](#)

[JN0-643 Braindumps](#)