



# HP2-N29<sup>Q&As</sup>

Understanding HP TippingPoint Solutions

**Pass HP HP2-N29 Exam with 100% Guarantee**

Free Download Real Questions & Answers **PDF** and **VCE** file from:

<https://www.passapply.com/hp2-n29.html>

100% Passing Guarantee  
100% Money Back Assurance

Following Questions and Answers are all new published by HP Official Exam Center

-  **Instant Download** After Purchase
-  **100% Money Back** Guarantee
-  **365 Days** Free Update
-  **800,000+** Satisfied Customers





### QUESTION 1

What purpose does the Multi Device Edit function serve?

- A. allows limited configuration changes to multiple IPS devices
- B. provides the same functionality as the device configuration dialog
- C. is required for custom filter implementation
- D. exposes the Multi Device WYSIWYG

Correct Answer: B

---

### QUESTION 2

What does "SMS" stand for?

- A. System Management Solution
- B. Safe Management System
- C. Security Management System
- D. Safety Management System

Correct Answer: C

SMS stands for the Security Management System, which is a central management point for managing different TippingPoint appliances, monitoring events and scheduling reports. Reference: <http://csrc.nist.gov/groups/STM/cmvp/documents/140-1/140sp/140sp1545.pdf>

---

### QUESTION 3

To manage an IPS with an SMS, the user must enter which three pieces of information?

- A. IPS superuser name, IPS address, IPS superuser password
- B. device name, password, serial number
- C. IP address, device name, password
- D. operator ID, password, device name

Correct Answer: A

How To: To log on to the SMS Client

1. Double-click the TippingPoint SMS Client icon on your desktop. The SMS Log On screen displays.

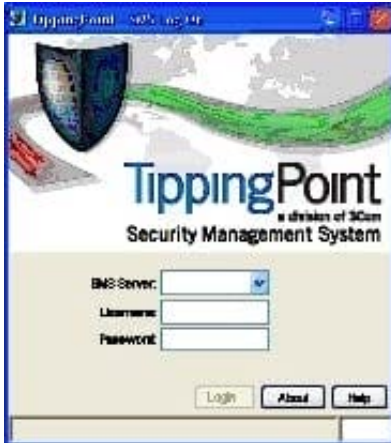


Figure 5 - 2: SMS Logon screen

2.  
In the SMS Server field, type the IP address or fully qualified hostname of your SMS Server.
3.  
In the Username field, type your user ID. For initial configuration, use SuperUser. In the Password field, type the password you defined in the SMS Setup Wizard.
5. Click Login.

#### QUESTION 4

While managing profiles from the Local Security Manager (LSM), what is applied to the Virtual Segment to implement security policy?

- A. Security Profile
- B. Block Log
- C. Security Blade
- D. Management Port

Correct Answer: A

Reference: [http://www.nfwest.com/tp/docs/techd293-tos3-1\\_ug.pdf](http://www.nfwest.com/tp/docs/techd293-tos3-1_ug.pdf) (page 124)

#### QUESTION 5

Which value is required during the IPS OBE process?

- A. filter changes
- B. serial number



C. TOS version number

D. security level

Correct Answer: D

Before you begin, ensure that a console is connected to the TippingPoint IPS device via the console port, and that the console is powered on and ready. When you turn on the IPS, you will see several status messages before the OBE setup wizard initializes. When the OBE setup wizard runs, the following screen appears:

Welcome to the TippingPoint Technologies Initial Setup wizard. Press any key to begin the Initial Setup Wizard or use LCD panel. Press any key to begin the OBE setup wizard. The following message appears:

You will be presented with some questions along with default values in brackets[]. Please update any empty fields or modify them to match your requirements. You may press the ENTER key to keep the current default value. After each group of entries, you will have a chance to confirm your settings, so don't worry if you make a mistake. Continue to the following section for instructions on account security.

Account Security Level

The Security Level dialog sets the security level that restricts user names and passwords. The default security level is Level 2, but you have the option to select one of three available levels:

There are three security levels for specifying user names and passwords:

Level 0: User names and passwords are unrestricted. Level 1: Names must be at least 6 characters long; passwords at least 8. Level 2: In addition to level 1 restrictions, passwords must contain:

-

at least 2 alpha characters

-

at least 1 numeric character

-

at least 1 non-alphanumeric character Please specify a security level to be used for initial super-user name and password creation. As superuser, you can modify the security level later on via Command Line Interface (CLI) or Local Security Manager (LSM). Security level [2]: Reference:  
[http://www.nfwest.com/tp/docs/techd291-tos3-1\\_commandref.pdf](http://www.nfwest.com/tp/docs/techd291-tos3-1_commandref.pdf)