



# HP0-Y46<sup>Q&As</sup>

Implementing HP Network Technologies

**Pass HP HP0-Y46 Exam with 100% Guarantee**

Free Download Real Questions & Answers **PDF** and **VCE** file from:

<https://www.passapply.com/HP0-Y46.html>

100% Passing Guarantee  
100% Money Back Assurance

Following Questions and Answers are all new published by HP Official Exam Center

-  **Instant Download** After Purchase
-  **100% Money Back** Guarantee
-  **365 Days** Free Update
-  **800,000+** Satisfied Customers





**QUESTION 1**

Match each IMC module to the correct description.

Hot Area:

Implements policies for environments that support "bring your own device" (BYOD)

User Behavior Module (UBM) ▼

User Behavior Module (UBM)
Service Operation Manager (SOM)
Endpoint Admission Defense (EAD)
User Access Manager (UAM)
Branch Intelligent Management Software (BIMS)

Prevents devices infected with malware from spreading the infection to other devices on the network

User Behavior Module (UBM) ▼

User Behavior Module (UBM)
Service Operation Manager (SOM)
Endpoint Admission Defense (EAD)
User Access Manager (UAM)
Branch Intelligent Management Software (BIMS)

Detects and eliminates threats in HTTP, FTP, and SMTP connections

User Behavior Module (UBM) ▼

User Behavior Module (UBM)
Service Operation Manager (SOM)
Endpoint Admission Defense (EAD)
User Access Manager (UAM)
Branch Intelligent Management Software (BIMS)

Securely manages customer premise equipment (CPE) in wide area networks (WANs)

User Behavior Module (UBM) ▼

User Behavior Module (UBM)
Service Operation Manager (SOM)
Endpoint Admission Defense (EAD)
User Access Manager (UAM)
Branch Intelligent Management Software (BIMS)

Helps manage the entire IT lifecycle

User Behavior Module (UBM) ▼

User Behavior Module (UBM)
Service Operation Manager (SOM)
Endpoint Admission Defense (EAD)
User Access Manager (UAM)
Branch Intelligent Management Software (BIMS)

Hot Area:



Implements policies for environments that support "bring your own device" (BYOD)

User Behavior Module (UBM)	▼
User Behavior Module (UBM)	
Service Operation Manager (SOM)	
Endpoint Admission Defense (EAD)	
User Access Manager (UAM)	
Branch Intelligent Management Software (BIMS)	

Prevents devices infected with malware from spreading the infection to other devices on the network

User Behavior Module (UBM)	▼
User Behavior Module (UBM)	
Service Operation Manager (SOM)	
Endpoint Admission Defense (EAD)	
User Access Manager (UAM)	
Branch Intelligent Management Software (BIMS)	

Detects and eliminates threats in HTTP, FTP, and SMTP connections

User Behavior Module (UBM)	▼
User Behavior Module (UBM)	
Service Operation Manager (SOM)	
Endpoint Admission Defense (EAD)	
User Access Manager (UAM)	
Branch Intelligent Management Software (BIMS)	

Securely manages customer premise equipment (CPE) in wide area networks (WANs)

User Behavior Module (UBM)	▼
User Behavior Module (UBM)	
Service Operation Manager (SOM)	
Endpoint Admission Defense (EAD)	
User Access Manager (UAM)	
Branch Intelligent Management Software (BIMS)	

Helps manage the entire IT lifecycle

User Behavior Module (UBM)	▼
User Behavior Module (UBM)	
Service Operation Manager (SOM)	
Endpoint Admission Defense (EAD)	
User Access Manager (UAM)	
Branch Intelligent Management Software (BIMS)	

Correct Answer:



Implements policies for environments that support "bring your own device" (BYOD)

- User Behavior Module (UBM)
- User Behavior Module (UBM)
- Service Operation Manager (SOM)
- Endpoint Admission Defense (EAD)
- User Access Manager (UAM)
- Branch Intelligent Management Software (BIMS)

Prevents devices infected with malware from spreading the infection to other devices on the network

- User Behavior Module (UBM)
- User Behavior Module (UBM)
- Service Operation Manager (SOM)
- Endpoint Admission Defense (EAD)
- User Access Manager (UAM)
- Branch Intelligent Management Software (BIMS)

Detects and eliminates threats in HTTP, FTP, and SMTP connections

- User Behavior Module (UBM)
- User Behavior Module (UBM)
- Service Operation Manager (SOM)
- Endpoint Admission Defense (EAD)
- User Access Manager (UAM)
- Branch Intelligent Management Software (BIMS)

Securely manages customer premise equipment (CPE) in wide area networks (WANs)

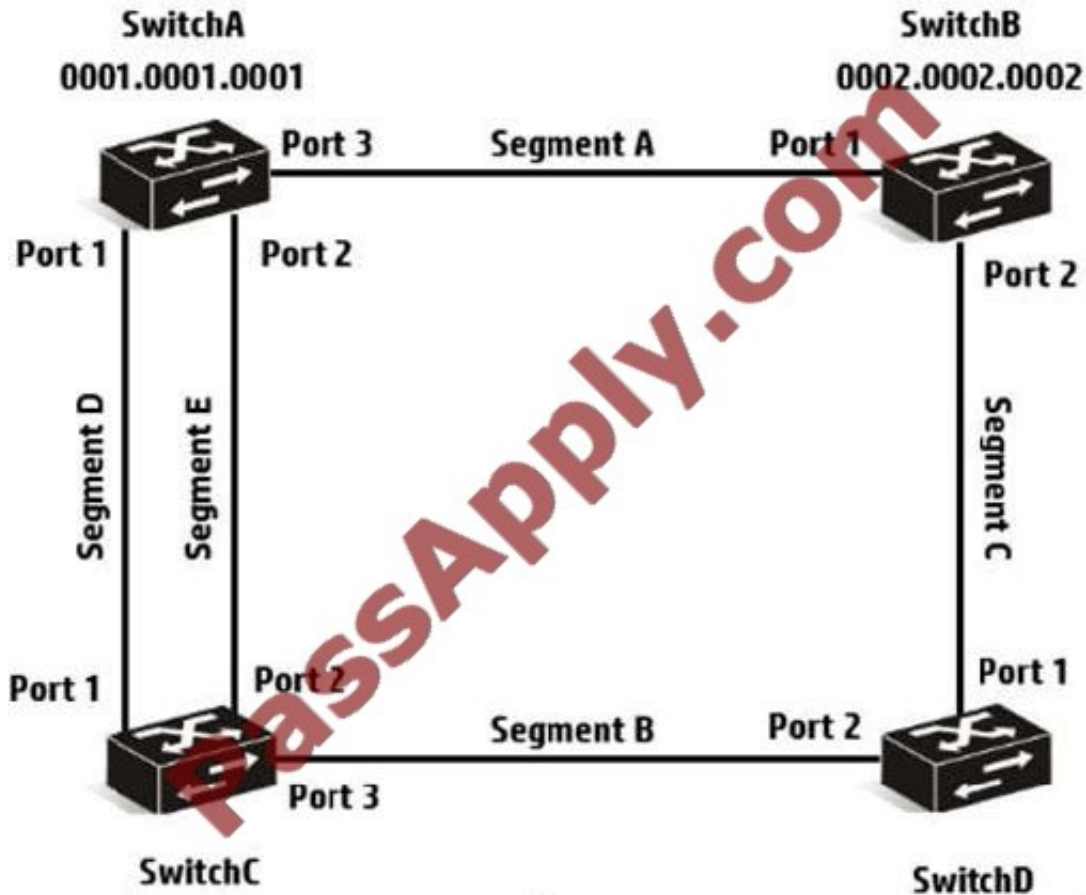
- User Behavior Module (UBM)
- User Behavior Module (UBM)
- Service Operation Manager (SOM)
- Endpoint Admission Defense (EAD)
- User Access Manager (UAM)
- Branch Intelligent Management Software (BIMS)

Helps manage the entire IT lifecycle

- User Behavior Module (UBM)
- User Behavior Module (UBM)
- Service Operation Manager (SOM)
- Endpoint Admission Defense (EAD)
- User Access Manager (UAM)
- Branch Intelligent Management Software (BIMS)

## QUESTION 2

Refer to the network exhibit.



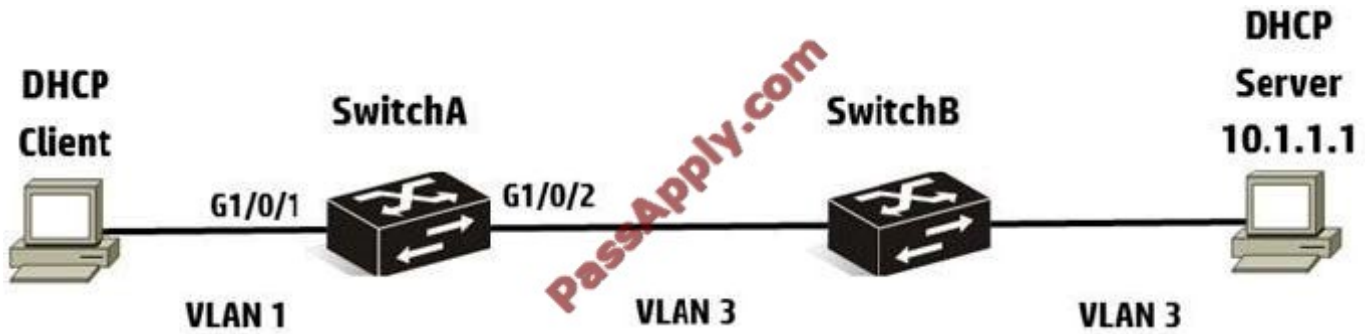
Assume the network shown in the exhibit has implemented RSTP Based on the topology, which ports are root ports?  
(Select two)

- A. SwitchA port 2
- B. SwitchB port 2
- C. SwitchB port 1
- D. SwitchD port 2
- E. SwitchC port 2

Correct Answer: AC

### QUESTION 3

Refer to the network exhibit.



A network administrator needs to configure DHCP on an HP Comware switch. The network administrator configures the following information:

```
[SwitchA] interface vlan-interface 1  
[SwitchA-Vlan-interface1] dhcp select relay  
[SwitchA-Vlan-interface1] dhcp relay server-select 1
```

After setting up DHCP relay, the network administrator has the DHCP client try to acquire addressing information, but the process fails. What should the network administrator do to solve this problem?

- A. Configure DHCP relay on SwitchB.
- B. Execute the routing command on SwitchA.
- C. Execute the dhcp enable command on SwitchA.
- D. Enable DHCP Snooping on SwitchA.

Correct Answer: C

#### QUESTION 4

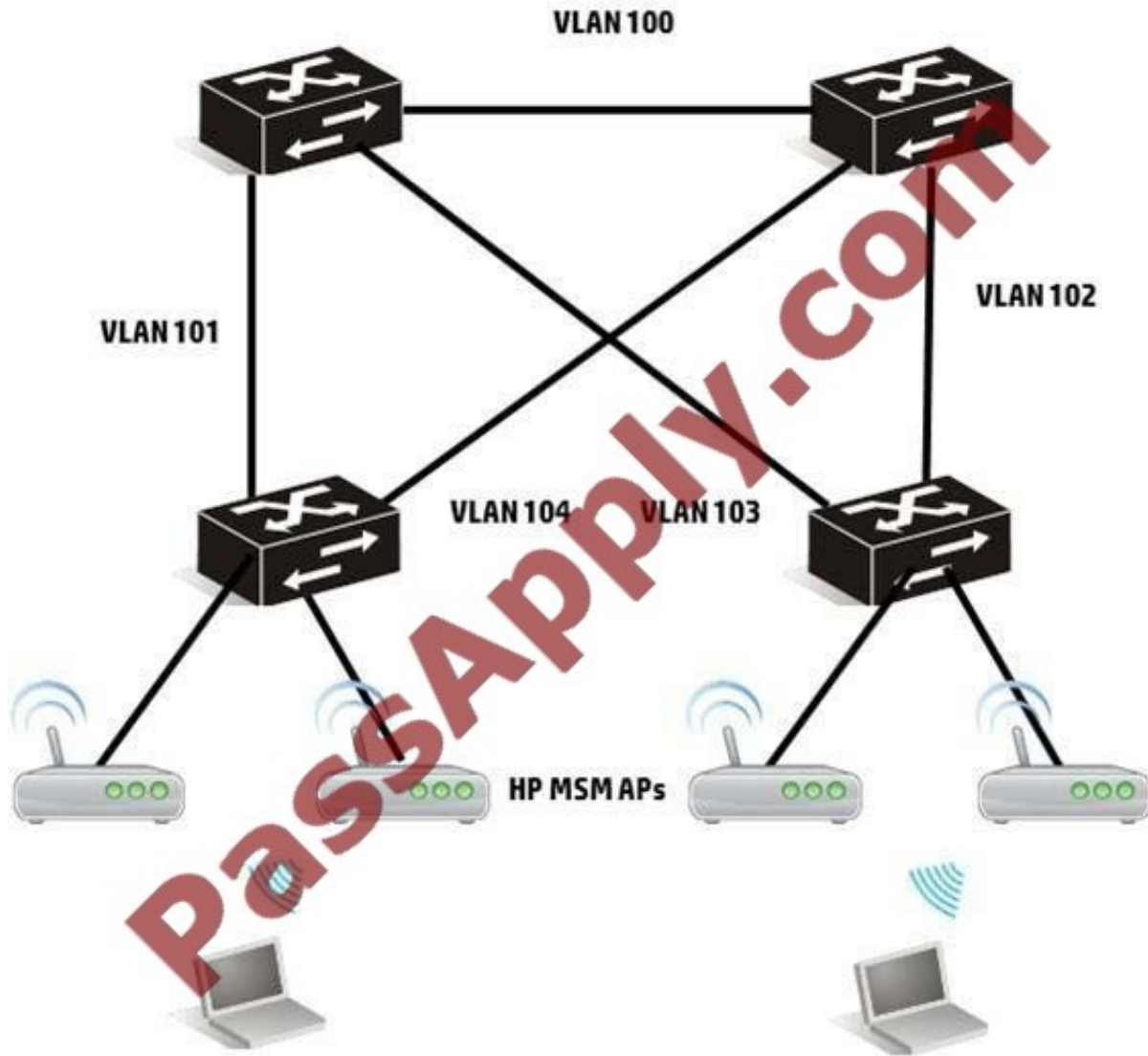
What is the default state of spanning tree on HP Comware switches?

- A. MSTP is enabled.
- B. RSTP is enabled.
- C. STP is disabled.
- D. PVST is enabled.

Correct Answer: A

#### QUESTION 5

Refer to the network exhibit.



When should the topology shown in the exhibit be implemented in a network?

- A. When roaming is not desired
- B. When autonomous mode is needed on the APs
- C. When a layer 2 switched network is required
- D. When centralized management of APs is required

Correct Answer: C

[Latest HP0-Y46 Dumps](#)

[HP0-Y46 PDF Dumps](#)

[HP0-Y46 Practice Test](#)



To Read the [Whole Q&As](#), please purchase the [Complete Version](#) from [Our website](#).

## Try our product !

100% Guaranteed Success  
100% Money Back Guarantee  
365 Days Free Update  
Instant Download After Purchase  
24x7 Customer Support  
Average 99.9% Success Rate  
More than 800,000 Satisfied Customers Worldwide  
Multi-Platform capabilities - [Windows](#), [Mac](#), [Android](#), [iPhone](#), [iPod](#), [iPad](#), [Kindle](#)

We provide exam PDF and VCE of Cisco, Microsoft, IBM, CompTIA, Oracle and other IT Certifications. You can view Vendor list of All Certification Exams offered:

<https://www.passapply.com/allproducts>

## Need Help

Please provide as much detail as possible so we can best assist you.  
To update a previously submitted ticket:



 <p><b>One Year Free Update</b> Free update is available within One Year after your purchase. After One Year, you will get 50% discounts for updating. And we are proud to boast a 24/7 efficient Customer Support system via Email.</p>	 <p><b>Money Back Guarantee</b> To ensure that you are spending on quality products, we provide 100% money back guarantee for 30 days from the date of purchase.</p>	 <p><b>Security &amp; Privacy</b> We respect customer privacy. We use McAfee's security service to provide you with utmost security for your personal information &amp; peace of mind.</p>
---------------------------------------------------------------------------------------------------------------------------------------------------------------------------------------------------------------------------------------------------------------------------------------------------------------------------------	-------------------------------------------------------------------------------------------------------------------------------------------------------------------------------------------------------------------------------------------------------------	------------------------------------------------------------------------------------------------------------------------------------------------------------------------------------------------------------------------------------------------------------------------------------

Any charges made through this site will appear as Global Simulators Limited.  
All trademarks are the property of their respective owners.  
Copyright © passapply, All Rights Reserved.