



HP0-S33^{Q&As}

Advanced Integration and Management of HP Server Solutions

Pass HP HP0-S33 Exam with 100% Guarantee

Free Download Real Questions & Answers **PDF** and **VCE** file from:

<https://www.passapply.com/hp0-s33.html>

100% Passing Guarantee
100% Money Back Assurance

Following Questions and Answers are all new published by HP Official Exam Center

- ⚙️ **Instant Download** After Purchase
- ⚙️ **100% Money Back** Guarantee
- ⚙️ **365 Days** Free Update
- ⚙️ **800,000+** Satisfied Customers





QUESTION 1

Which Windows performance Monitor counter indicates that a network bottlenecks is occurring?

- A. Network Interface: Output Queue Length
- B. Network Interface: Current Bandwidth
- C. Network Interface: Packets Sent/Sec
- D. Network Interface: Packets Received/Sec

Correct Answer: A

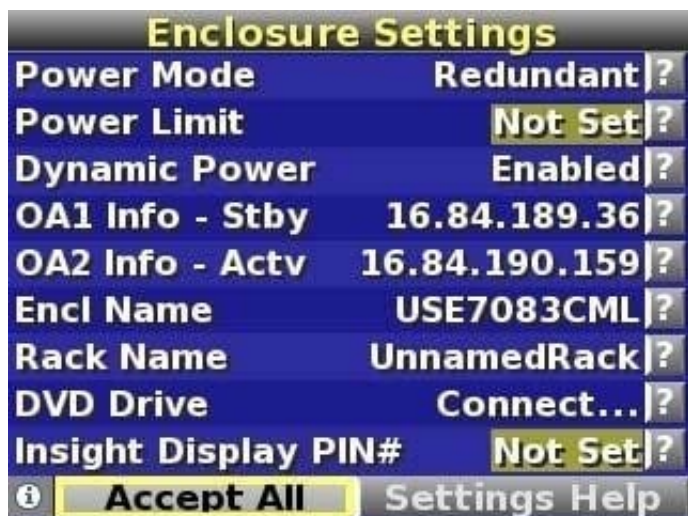
QUESTION 2

What can you configure with the BladeSystem Insight Display on a c7000 enclosure? (Select three)

- A. Rack name
- B. Power mode
- C. Number of fans installed
- D. OA1 IP address
- E. Blade name
- F. Midplane serial number

Correct Answer: ABD

Reference: <http://h20000.www2.hp.com/bc/docs/support/SupportManual/c00698534/c00698534.pdf> (page 13)



**QUESTION 3**

A customer has an HP 10642 G2 Rack with Multiple DL2000 servers. The power connection to the rack is by two full length 7.36 kVA 32A single phase international PDUs with SNMP management module installed. As shown in the exhibit, the DL 170e servers in the DL2000 chassis are being blocked in by the PDU.

What can be done to allow the DL 170e to be removed for servicing?



- A. Replace the Existing PDUs with full length, 11kVA 16A 3Phase PDUs.
- B. Replace the existing PDUs with a modular PDU solution.
- C. Replace the existing PDUs with an iPDU Solution.
- D. Mount the existing PDUs upside and feed the power from the top of the rack.

Correct Answer: C

QUESTION 4

A Microsoft Windows customer wants to add a file server presence to several existing and future remote sites.



Redundancy, ease of management and hot swap storage growth capabilities beyond 32TB are required.

The solution must support iSCSI, FTP, and WebDAV for each site. Footprint and cost are concerns. What is the best solution?

- A. X5000 running Windows Storage Server, D2700 enclosure
- B. Four SL230p Gen8 nodes running Windows 2008 R2, SL6500 and ILO advanced licensing
- C. Two DL360p Gen8 servers running Windows Storage Server and a D2600 enclosure
- D. C7000, four BL460c Gen8 blades running Windows 2008 x64 and an MDS600

Correct Answer: A

http://h18000.www1.hp.com/products/quickspecs/14154_div/14154_div.pdf

HP X5000 G2 Network Storage System At a Glance: Comprehensive, highly available Network Attached Storage appliance Two node, active/active mid-range NAS cluster and shared storage in a single system File and block storage capable - CIFS/SMB, NFS, iSCSI, HTTP, FTP, and WebDAV Advanced storage management features - File deduplication, File Classification Infrastructure, Hosted BranchCache, file screening, storage quotas, and storage reporting All inclusive software license Simple deployment and management All standard hardware and software pre-installed in system Power On to file serving in less than an hour 100% compatible with Windows IT infrastructure - Active Directory, Distributed File System (namespace and replication), Microsoft System Center and more Can be remotely managed for lights out data center or remote office locations Scalable and affordable Capable of supporting 10,000 plus users on a single system - dependent on storage configuration, LUN and RAID settings. User testing performed with Microsoft's File Server Capacity Tool. Up to 48TB of capacity inside the system, expands to over 100TB externally with HP D2000 Disk Enclosures File Deduplication feature can recover up to 40% of disk space File Classification Infrastructure feature provides insight into your data to help you manage it more effectively, reduce costs and mitigate risks based on the data's business value No need to buy additional hardware for anti-virus screening any Windows Server 2008 R2 compatible antivirus software runs right on the system Built on Windows Server 2008 R2 File Services Enables administrators to provide faster access to files while minimizing the effort required managing distributed data.

QUESTION 5

You want to create a boot option on an HP BL890c i2 Blade Server. From which option in the UEFI Boot Menu should be performed?

- A. M/m Launch Boot Maintenance Manager
- B. D/d Launch Device manager
- C. S/s Launch UEFI Shell
- D. I/I Launch iLO Setup Tool
- E. B/b Launch Box Manager

Correct Answer: C

<http://h20000.www2.hp.com/bizsupport/TechSupport/Document.jsp?objectID=c02822269&lang=en&cc=us&taskId=andprodSeriesId=4186437>



VCE & PDF

PassApply.com

<https://www.passapply.com/hp0-s33.html>

2024 Latest passapply HP0-S33 PDF and VCE dumps Download

[Latest HP0-S33 Dumps](#)

[HP0-S33 VCE Dumps](#)

[HP0-S33 Braindumps](#)