



GSLC^{Q&As}

GIAC Security Leadership Certification (GSLC)

Pass GIAC GSLC Exam with 100% Guarantee

Free Download Real Questions & Answers **PDF** and **VCE** file from:

<https://www.passapply.com/gslc.html>

100% Passing Guarantee
100% Money Back Assurance

Following Questions and Answers are all new published by GIAC
Official Exam Center

-  **Instant Download** After Purchase
-  **100% Money Back** Guarantee
-  **365 Days** Free Update
-  **800,000+** Satisfied Customers





QUESTION 1

Which of the following are examples of administrative controls that involve all levels of employees within an organization and determine which users have access to what resources and information? Each correct answer represents a complete solution. Choose three.

- A. Training and awareness
- B. Employee registration and accounting
- C. Network authentication
- D. Encryption
- E. Disaster preparedness and recovery plans

Correct Answer: ABE

QUESTION 2

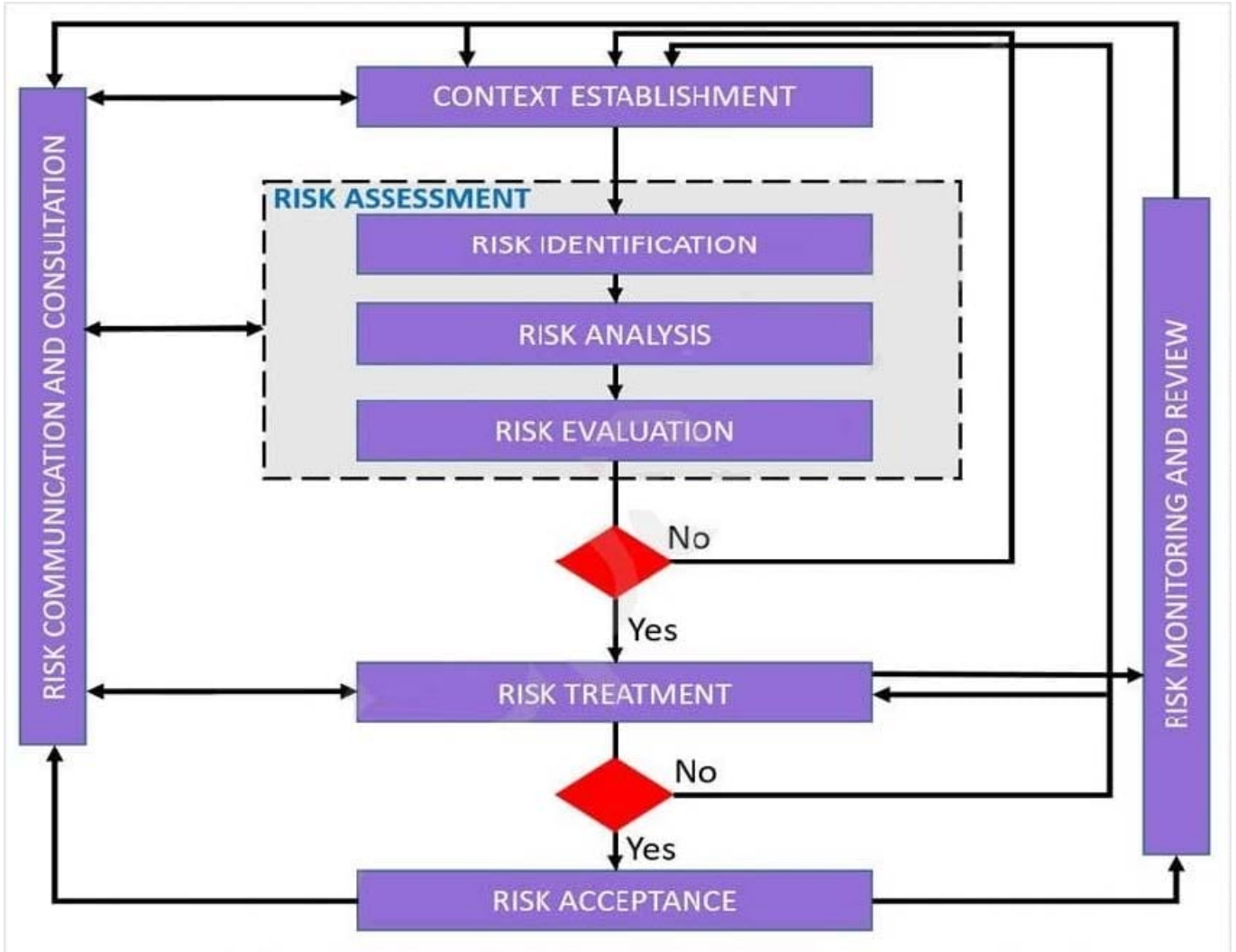
You have just set up a wireless network for customers at a coffee shop. Which of the following are good security measures to implement? Each correct answer represents a complete solution. Choose two.

- A. Using WPA encryption
- B. MAC filtering the router
- C. Using WEP encryption
- D. Not broadcasting SSID

Correct Answer: AC

QUESTION 3

Which of the following standards defines the iterative risk management process shown below?



- A. NIST CSF
- B. NIST 800-37
- C. ISO 27005
- D. FAIR

Correct Answer: B

QUESTION 4

In which of the following techniques does an attacker change the address of the phishing site in such a manner that it can bypass filters or other application defenses that have been put in place to block specific IP addresses?

- A. Dumpster diving
- B. Reverse social engineering
- C. Shoulder surfing



D. URL obfuscation

Correct Answer: D

QUESTION 5

Which of the following is an example of pseudonymous data?

- A. Encrypting employee data with a private key before transmitting it for payroll processing
- B. Using salted hashes to protect customer bank account data in a backend database
- C. Collected poll results added together and displayed in total on a public website
- D. Research analysis with names removed and replaced with a unique identifier for each participant

Correct Answer: D

[GSLC VCE Dumps](#)

[GSLC Practice Test](#)

[GSLC Study Guide](#)