



FCNSP.V5^{Q&As}

Fortinet Certified Network Security Professional (FCNSP.v5)

Pass Fortinet FCNSP.V5 Exam with 100% Guarantee

Free Download Real Questions & Answers **PDF** and **VCE** file from:

<https://www.passapply.com/fcnsp-v5.html>

100% Passing Guarantee
100% Money Back Assurance

Following Questions and Answers are all new published by Fortinet
Official Exam Center

-  **Instant Download** After Purchase
-  **100% Money Back** Guarantee
-  **365 Days** Free Update
-  **800,000+** Satisfied Customers





QUESTION 1

Examine the exhibit shown below then answer the question that follows it.

Enable	Protocol	Inspection Port(s)
<input checked="" type="checkbox"/>	HTTPS	443
<input type="checkbox"/>	SMTPS	465
<input type="checkbox"/>	POP3S	995
<input type="checkbox"/>	IMAPS	993
<input type="checkbox"/>	FTPS	990

Within the UTM Proxy Options, the CA certificate Fortinet_CA_SSLProxy defines which of the following:

- A. FortiGate unit's encryption certificate used by the SSL proxy.
- B. FortiGate unit's signing certificate used by the SSL proxy.
- C. FortiGuard's signing certificate used by the SSL proxy.
- D. FortiGuard's encryption certificate used by the SSL proxy.

Correct Answer: A

QUESTION 2

If Routing Information Protocol (RIP) version 1 or version 2 has already been configured on a FortiGate unit, which of the following statements is correct if the routes learned through RIP need to be advertised into Open Shortest Path First (OSPF)?

- A. The FortiGate unit will automatically announce all routes learned through RIP v1 or v2 to its OSPF neighbors.
- B. The FortiGate unit will automatically announce all routes learned only through RIP v2 to its OSPF neighbors.
- C. At a minimum, the network administrator needs to enable Redistribute RIP in the OSPF Advanced Options.
- D. The network administrator needs to configure a RIP to OSPF announce policy as part of the RIP settings.
- E. At a minimum, the network administrator needs to enable Redistribute Default in the OSPF Advanced Options.

Correct Answer: C

QUESTION 3

In HA, the option Reserve Management Port for Cluster Member is selected as shown in the Exhibit below.



High Availability

Mode

Device Priority

Reserve Management Port for Cluster Member

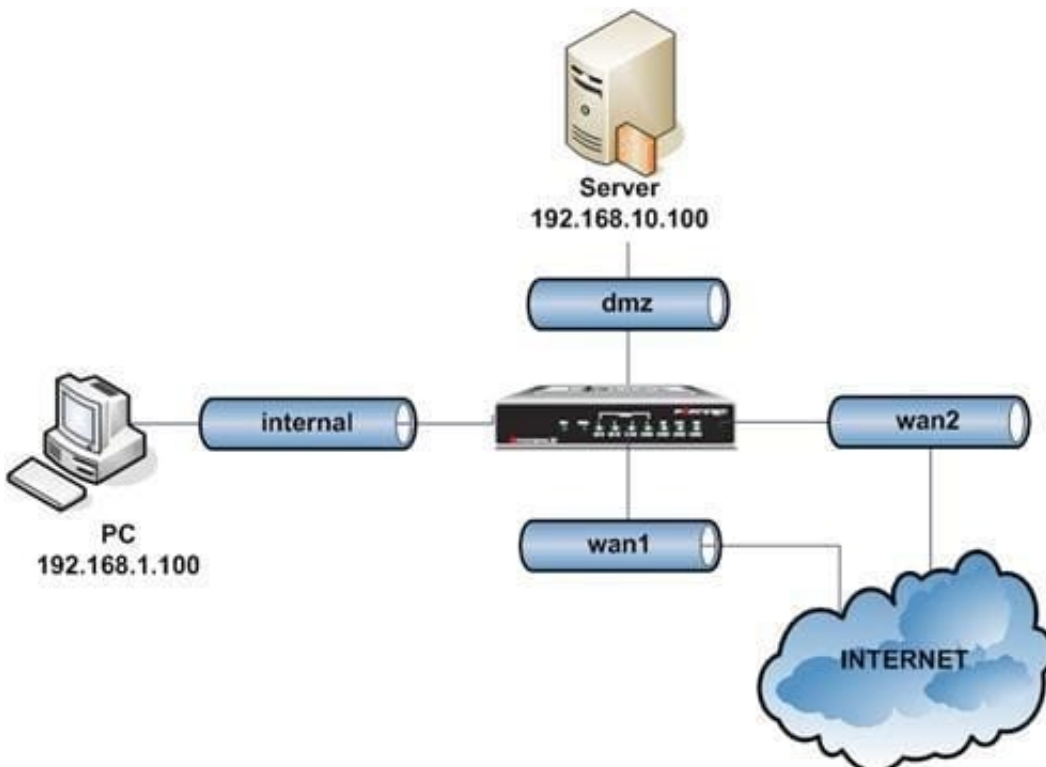
Which of the following statements are correct regarding this setting? (Select all that apply.)

- A. Interface settings on port7 will not be synchronized with other cluster members.
- B. The IP address assigned to this interface must not overlap with the IP address subnet assigned to another interface.
- C. Port7 appears in the routing table.
- D. A gateway address may be configured for port7.
- E. When connecting to port7 you always connect to the master device.

Correct Answer: AD

QUESTION 4

An intermittent connectivity issue is noticed between two devices located behind the FortiGate dmz and internal interfaces. A continuous sniffer trace is run on the FortiGate unit that the administrator will convert into a .cap file for an off-line analysis with a sniffer application.





Given the high volume of global traffic on the network, which of the following CLI commands will best allow the administrator to perform this troubleshooting operation?

- A. diagnose sniffer packet any
- B. diagnose sniffer packet dmz "" 3
- C. diagnose sniffer packet any "host 192.168.1.100 and host 192.168.10.100 " 3
- D. diagnose sniffer packet any "host 192.168.1.100 and host 192.168.10.100 " 4

Correct Answer: C

QUESTION 5

In HA, what is the effect of the Disconnect Cluster Member command as given in the Exhibit.



- A. The HA mode changes to standalone.
- B. Port3 is configured with an IP address for management access.
- C. The Firewall rules are purged on the disconnected unit.
- D. All other interface IP settings are maintained.

Correct Answer: AB