



# EX200<sup>Q&As</sup>

Red Hat Certified System Administrator - RHCSA

## Pass RedHat EX200 Exam with 100% Guarantee

Free Download Real Questions & Answers **PDF** and **VCE** file from:

<https://www.passapply.com/ex200.html>

100% Passing Guarantee  
100% Money Back Assurance

Following Questions and Answers are all new published by RedHat  
Official Exam Center

-  **Instant Download** After Purchase
-  **100% Money Back** Guarantee
-  **365 Days** Free Update
-  **800,000+** Satisfied Customers





### QUESTION 1

A YUM source has been provided in the `http://instructor.example.com/pub/rhel6/dvd` Configure your system and can be used normally.

Correct Answer: Check the answer in explanation.

```
/etc/yum.repos.d/base.repo [base] name=base baseurl=http://instructor.example.com/pub/rhel6/dvd gpgcheck=0 yum list
```

---

### QUESTION 2

Some users home directory is shared from your system. Using `showmount -e localhost` command, the shared directory is not shown. Make access the shared users home directory.

Correct Answer: Check the answer in explanation.

Verify the File whether Shared or not ? : `cat /etc/exports`

Start the nfs service: `service nfs start`

Start the portmap service: `service portmap start`

Make automatically start the nfs service on next reboot: `chkconfig nfs on`

Make automatically start the portmap service on next reboot: `chkconfig portmap on`

Verify either sharing or not: `showmount -e localhost`

Check that default firewall is running on system?

If running flush the iptables using `iptables -F` and stop the iptables service.

---

### QUESTION 3

SELinux must run in force mode.

Correct Answer: Check the answer in explanation.

```
/etc/sysconfig/selinux SELINUX=enforcing
```

---

### QUESTION 4

Copy `/etc/fstab` to `/var/tmp` name admin, the user1 could read, write and modify it, while user2 without any permission.

Correct Answer: Check the answer in explanation.

```
# cp /etc/fstab /var/tmp/ # chgrp admin /var/tmp/fstab # setfacl -m u:user1:rwX /var/tmp/fstab # setfacl -m u:user2:--- /var/tmp/fstab # ls -l -rw-rw-r--+ 1 root admin 685 Nov 10 15:29 /var/tmp/fstab
```

---

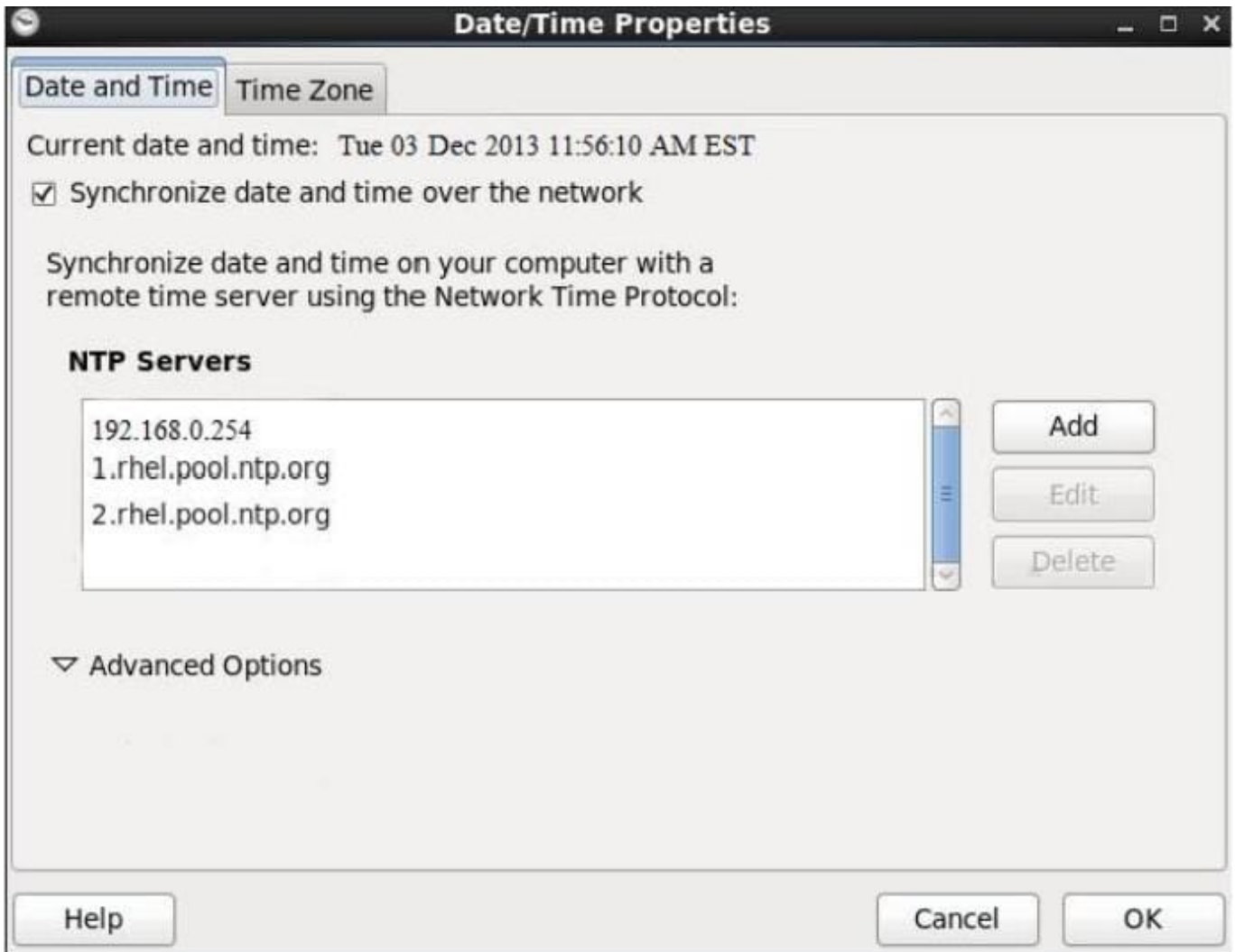


**QUESTION 5**

Configure the NTP service in your system.

Correct Answer: Check the answer in explanation.

system-config-date and



[Latest EX200 Dumps](#)

[EX200 VCE Dumps](#)

[EX200 Practice Test](#)