



EX0-113^{Q&As}

TMap Next Foundation

Pass EXIN EX0-113 Exam with 100% Guarantee

Free Download Real Questions & Answers **PDF** and **VCE** file from:

<https://www.passapply.com/ex0-113.html>

100% Passing Guarantee
100% Money Back Assurance

Following Questions and Answers are all new published by EXIN
Official Exam Center

-  **Instant Download** After Purchase
-  **100% Money Back** Guarantee
-  **365 Days** Free Update
-  **800,000+** Satisfied Customers





QUESTION 1

See the definition below:

Tests in which the supplying party demonstrates that the product particularly meets the functional and non-functional specifications and the technical design, among other things of which test level is this the definition?

- A. acceptance test
- B. development test
- C. system test

Correct Answer: C

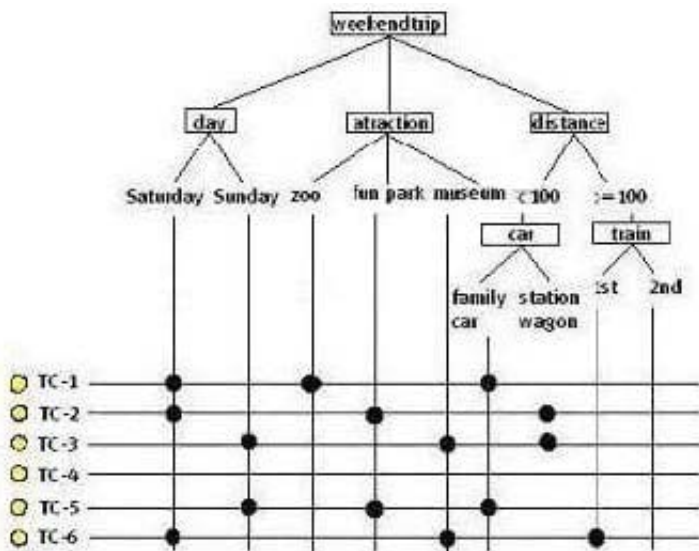
QUESTION 2

See the illustration below:

In order to test a registration application for a weekend trip, logical test cases must be created according to the Data Combination Test. It is agreed to conduct light testing. One data pair is defined that must be fully tested in combination:

-day ?attraction

Using a classification tree, six test cases are designed.



Where should the 'bullets' for test case 4 be placed?

- A. Saturday, zoo, 2nd
- B. Sunday, zoo, family car
- C. Sunday, zoo, 2nd



Correct Answer: C

QUESTION 3

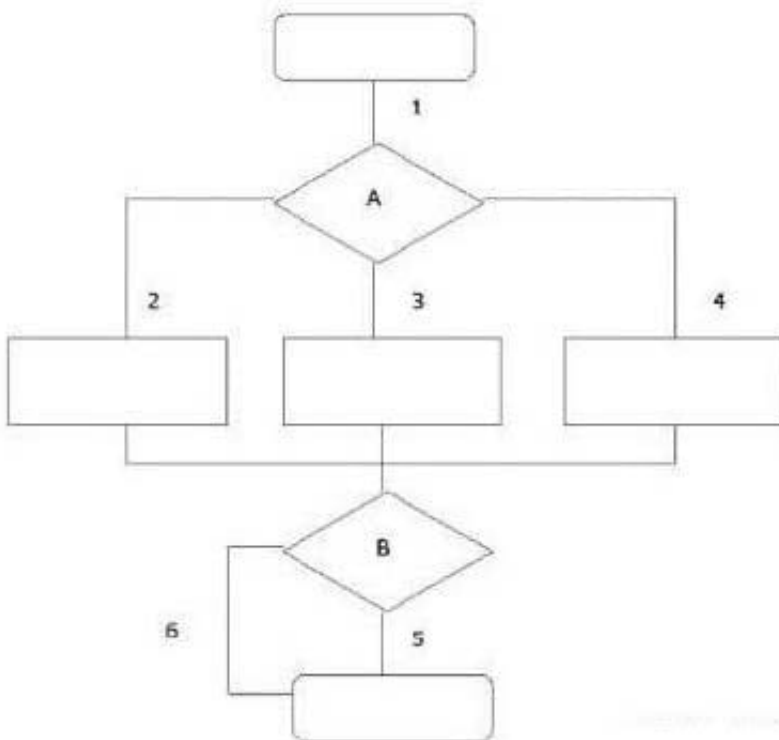
What is the definition of valuation?

- A. Evaluation gives insight in the actual and future status of the end product.
- B. Evaluation is a process that gives insight into and advice on quality and related risks.
- C. Evaluation is assessing the interim products in the system development process.

Correct Answer: C

QUESTION 4

See the illustration below:



What is the minimum number of logical test cases generated by the use of the Process Cycle Test if the coverage type paths test depth level 2 is used?

- A. 3
- B. 5
- C. 6



D. 9

Correct Answer: C

QUESTION 5

Three parameters play a role for a printing function and for every parameter there are two equivalence classes to be tested:

font:	arial	verdana
font color:	black	color
font size:	10	12

	font	font color	font size
1	arial	black	10
2	arial	color	12
3	verdana	black	12
4			

Which combination is missing in the table if the coverage type pairwise testing is applied?

- A. arial color 10
- B. arial black 12
- C. verdana color 10
- D. verdana black 10

Correct Answer: C