



# EX0-104<sup>Q&As</sup>

TMap Next Foundation

## Pass EXIN EX0-104 Exam with 100% Guarantee

Free Download Real Questions & Answers **PDF** and **VCE** file from:

<https://www.passapply.com/ex0-104.html>

100% Passing Guarantee  
100% Money Back Assurance

Following Questions and Answers are all new published by EXIN  
Official Exam Center

-  **Instant Download** After Purchase
-  **100% Money Back** Guarantee
-  **365 Days** Free Update
-  **800,000+** Satisfied Customers





### QUESTION 1

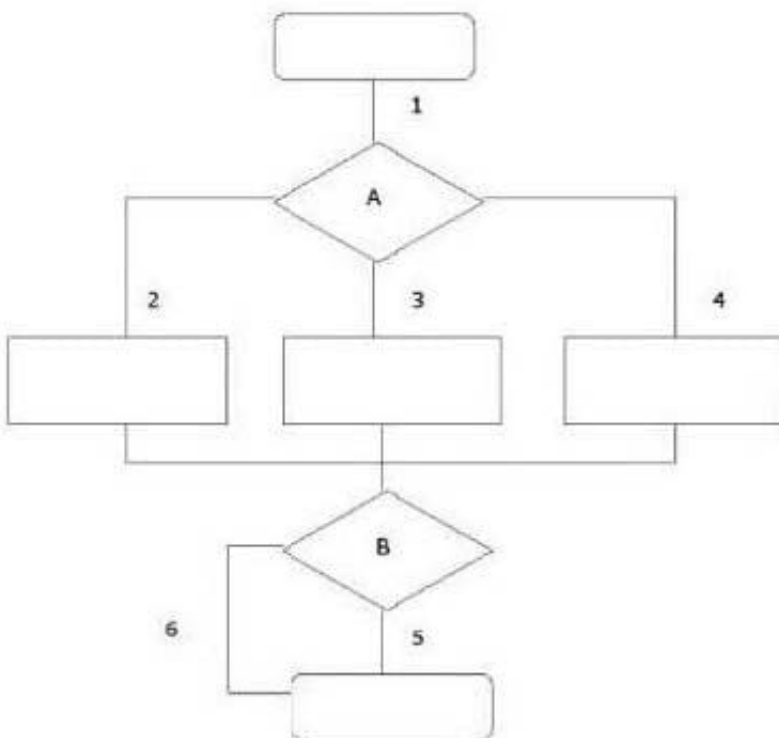
Drivers can be used in the Execution phase of a test process. What are drivers for?

- A. to test, at an early stage, a module that has relationships with modules not yet realized
- B. to gain insight into aspects like memory use, CPU use, network load and performance
- C. to determine whether the system continues to function correctly and at the required speeds under the expected production load

Correct Answer: A

### QUESTION 2

See the illustration below:



Which test situations can be differentiated when the coverage type paths test depth level 2 is used?

- A. 1-2; 2-3; 3-4; 2-4; 2-5; 2-6; 3-5; 3-6; 4-5; 4-6; 5-6
- B. 1-2; 1-3; 1-4; 2-5; 3-5; 4-5; 2-6; 3-6; 4-6
- C. 1-2-5; 1-2-6; 1-3-6; 1-3-5; 1-4-6; 1-4-5

Correct Answer: B



### QUESTION 3

See the specification below in which a decision point is described:

$$R = (D \text{ OR } E) \text{ AND } F$$

Use of the coverage type decision points modified condition/decision coverage produces the following table with test situations:

R = (D OR E) AND F	1	0
D	<del>101</del>	<del>001</del>
E	.	001
F	101	100

Which values are missing where the dots are stated (? to make the table complete?)

- A. 010
- B. 011
- C. 110
- D. 111

Correct Answer: B

### QUESTION 4

What strongly benefits the quality characteristic 'testability'?

- A. the ease of operation of the system by the end-users
- B. the ease with which an interface can be created with another information system
- C. the ease with which the information system can be placed and maintained in an operational condition
- D. having a regression test and other testware

Correct Answer: D

### QUESTION 5

See the decision and test situations below:  $R = (A \text{ AND } B) \text{ OR } C$



1.A=false	B=true	C=false
2.A=false	B=true	C=false
3.A=true	B=true	C=false

Which test situation is missing if the coverage type decision points modified condition/decision coverage is used?

A. 

A=true	B=true	C=true
--------	--------	--------

B. 

A=true	B=false	C=false
--------	---------	---------

A. Option A

B. Option B

Correct Answer: B

[Latest EX0-104 Dumps](#)

[EX0-104 Practice Test](#)

[EX0-104 Study Guide](#)