



E20-690^{Q&As}

VNX Solutions Specialist Exam for Platform Engineers

Pass EMC E20-690 Exam with 100% Guarantee

Free Download Real Questions & Answers **PDF** and **VCE** file from:

<https://www.passapply.com/e20-690.html>

100% Passing Guarantee
100% Money Back Assurance

Following Questions and Answers are all new published by EMC
Official Exam Center

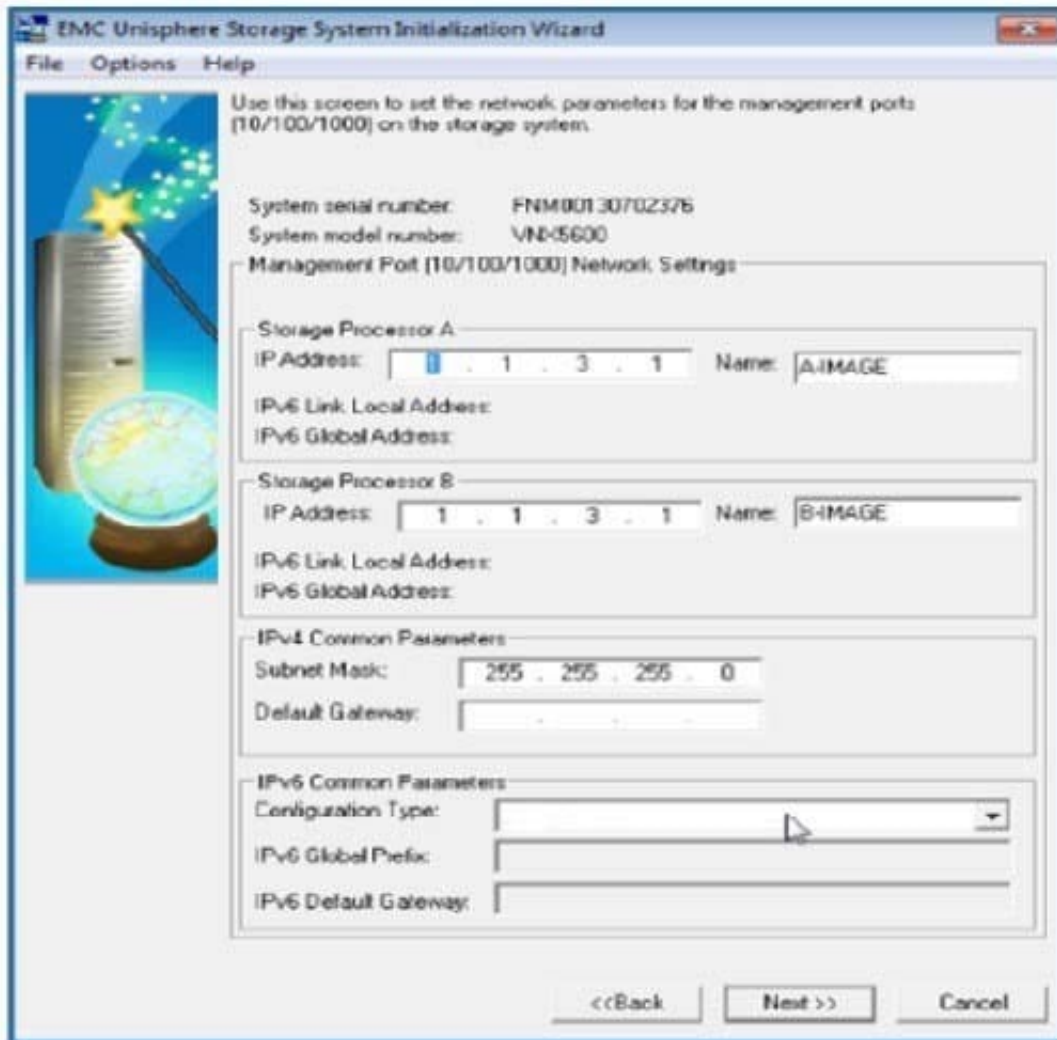
-  **Instant Download** After Purchase
-  **100% Money Back** Guarantee
-  **365 Days** Free Update
-  **800,000+** Satisfied Customers





QUESTION 1

Refer to the exhibit.



What is a function of the IPv6 Common Parameters configuration type?

- A. Disables IPv6 addressing on the SPs
- B. Enables configuration of IPv6 in Unisphere
- C. Disables the reminder to reboot after the configuration is done
- D. Enables IPv4 addressing on the SPs

Correct Answer: A

QUESTION 2

You are installing ESRS IP Client to monitor a VNX Block array. You also want to connect remotely to SP A and SP B



over the ESRS platform.

What do you need to do first?

- A. Add the ESRS workstation IP address to the RemotelyAnywhere access restriction list on the array\\'s SP A or SP B.
- B. Add the SP A and SP B IP addresses to the ESRS workstation host file.
- C. Add the ESRS workstation IP address to the administration access restriction list.
- D. Add the SP A and SP B IP addresses to the RemotelyAnywhere access restriction list on the array\\'s SP A or SP B.

Correct Answer: A

QUESTION 3

You are tasked with the installation of an enterprise class VNX Unified field-installable unit. Which resource will provide you with the cabling connections for the secondary Control Station?

- A. VNX Installation Guide
- B. Unisphere Service Manager
- C. System Operations Guide
- D. VNX Installation Toolkit

Correct Answer: A

QUESTION 4

What file is created on the storage processor by the TRT process during analysis of an event?

- A. results.xml
- B. events.xml
- C. connect_home.xml
- D. triiage.xml

Correct Answer: A

QUESTION 5

You are about to perform a NDU in a customer environment containing several hosts running Veritas DPM. What should be done to ensure the host paths are maintained after the secondary SP has rebooted?

- A. Increase the NDU delay time.
- B. Decrease the NDU delay time.



C. Disable DMP on the host before performing the NDU.

D. Run the NDU in engineering mode to skip the NDU delay option.

Correct Answer: A

[E20-690 Practice Test](#)

[E20-690 Exam Questions](#)

[E20-690 Braindumps](#)