



E20-616^{Q&As}

Symmetrix Installation and Troubleshooting Specialist

Pass EMC E20-616 Exam with 100% Guarantee

Free Download Real Questions & Answers **PDF** and **VCE** file from:

<https://www.passapply.com/e20-616.html>

100% Passing Guarantee
100% Money Back Assurance

Following Questions and Answers are all new published by EMC
Official Exam Center

-  **Instant Download** After Purchase
-  **100% Money Back** Guarantee
-  **365 Days** Free Update
-  **800,000+** Satisfied Customers





QUESTION 1

You are preparing to run a health check on a VMAX 10K and log into the Service Processor, but cannot locate the icon for Simplified SymmWin on the desktop.

What is the most likely reason Simplified SymmWin is not available?

- A. The VMAX is running Enginuity version 5875
- B. Simplified SymmWin is not supported on VMAX 10K
- C. Engineering credentials are required for Simplified SymmWin
- D. Service Processor code upgrade has not been committed

Correct Answer: A

QUESTION 2

What is the vault hyper size in GB for configuring a new VMAX 40K?

- A. 9
- B. 5
- C. 4.5
- D. 0.5

Correct Answer: A

QUESTION 3

Refer to the exhibit.

Init	DirMap	DirEdit	Hosts	DAE	Disks	VolReq	VolMap	VolEdit	VolDist	Algo										
FDA-Link		FA-Link																		
ID	FA-Link																			Port
dirs	Common SN (C)	Disable Queue	Enable Sunapee	Enable Siemens	Sequent Host	Avoid Reset Broadcast	SCSI 3 Interface	SCSI Primary	OS 2007	Enable Volume	Non Participate	Enable point	Unique Worldwide	Enable FibrePath	Open VMS	Enable Auto	FA AS400	link speed	Port	
- 07a	C	d	scl	s	seq	arb	sc3	spc2	os2007	v	np	PP	UwN	VCM	ovms	ean	as4	2G	A	
	C	d	scl	s	seq	arb	sc3	spc2	os2007	v	np	PP	UwN	vcm	ovms	ean	as4	2G	B	
- 07b	C	d	scl	s	seq	arb	sc3	spc2	os2007	v	np	pp	UwN	vcm	ovms	EAN	as4	1G	A	
	C	d	scl	s	seq	arb	sc3	spc2	os2007	v	np	pp	UwN	vcm	ovms	EAN	as4	1G	B	
- 07c	C	d	scl	s	seq	arb	sc3	spc2	os2007	v	np	PP	UwN	VCM	ovms	ean	as4	4G	A	
	C	d	scl	s	seq	arb	sc3	spc2	os2007	v	np	PP	UwN	vcm	ovms	ean	as4	4G	B	
- 07d	C	d	scl	s	seq	arb	sc3	spc2	os2007	v	np	PP	UwN	vcm	ovms	ean	as4	1G	A	
	C	d	scl	s	seq	arb	sc3	spc2	os2007	v	np	PP	UwN	vcm	ovms	ean	as4	1G	B	
- 08a																				



When would you use the '\\EAN\\' bit setting in SymmWin?

- A. If the SAN speed is unknown
- B. To enable SAN topology
- C. To Enable iSCSI negotiation
- D. If IP network speed will be negotiated

Correct Answer: A

QUESTION 4

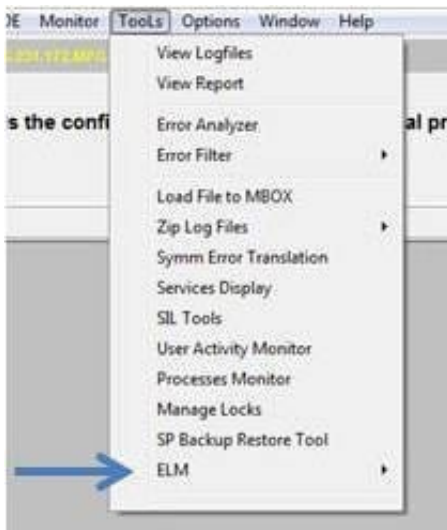
Which action needs to be taken if the Backend Cabling Verification fails after a Data Center relocation?

- A. Contact PSE Lab for assistance.
- B. Relocate the cables shown as faulted.
- C. Replace the cables shown as faulted.
- D. Power down and re-start the Backend Cabling Verification script.

Correct Answer: A

QUESTION 5

Refer to the exhibit.



For what is the ELM tool used?

- A. Manage Symmetrix Licenses
- B. Environmental LCC Management



C. ELM scheduler task

D. Create Environmental scripts

Correct Answer: A

[E20-616 PDF Dumps](#)

[E20-616 VCE Dumps](#)

[E20-616 Exam Questions](#)