



CTAL-TTA_001^{Q&As}

ISTQB Certified Tester Advanced Level - Technical Test Analyst

Pass ISQI CTAL-TTA_001 Exam with 100% Guarantee

Free Download Real Questions & Answers **PDF** and **VCE** file from:

https://www.passapply.com/ctal-tta_001.html

100% Passing Guarantee
100% Money Back Assurance

Following Questions and Answers are all new published by ISQI Official Exam Center

- ⚙️ **Instant Download** After Purchase
- ⚙️ **100% Money Back** Guarantee
- ⚙️ **365 Days** Free Update
- ⚙️ **800,000+** Satisfied Customers





QUESTION 1

If you are flying with an economy ticket, there is a possibility that you may get upgraded to business class, especially if you hold a gold card in the airline's frequent flier program. If you don't hold a gold card, there is a possibility that you will get 'bumped' off the flight if it is full and you check in late. This is shown in the figure hereafter. Note that each box (i.e. statement) has been numbered.

Three tests have been run:

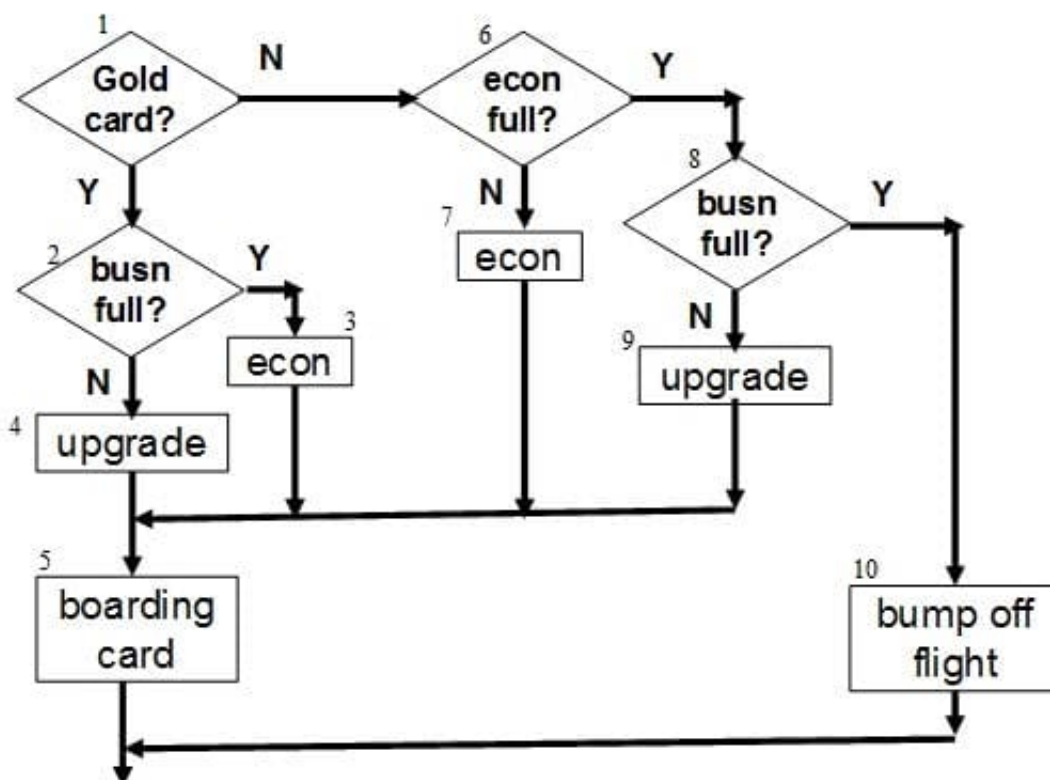
Test 1: Gold card holder who gets upgraded to business class

Test 2: Non-gold card holder who stays in economy

Test 3: A person who is bumped from the flight

What is the statement coverage of these three tests? 2 credits [K4]

Number of correct answers: 1



A. 60%

B. 70%



C. 80%

D. 90%

Correct Answer: C

QUESTION 2

To support code reviews a checklist will be developed. Which TWO questions from the list would you implement as part of the code review checklist? 3 credits [K3]

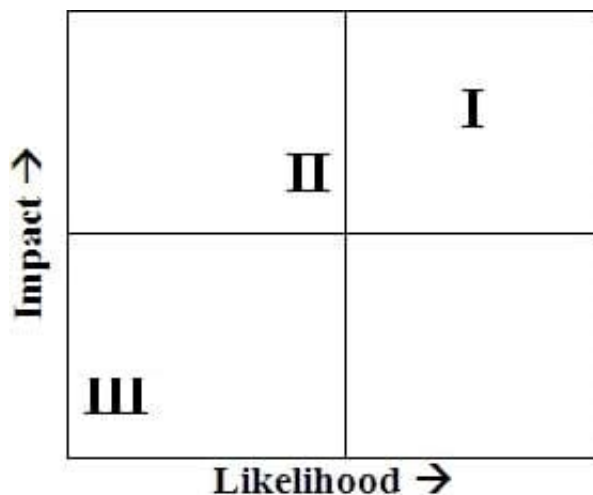
Number of correct answers: 2

- A. Are any magic numbers (numeric literals) used, other than 0 or 1?
- B. Can each item be implemented with the techniques, tools, and resources available?
- C. Is it possible during acceptance testing to verify whether the item has been satisfied?
- D. Is the item specified in an exact, unambiguous way?
- E. Is there any logic containing no statements and no explanation as to why it is empty?

Correct Answer: AE

QUESTION 3

The result of a product risk analysis performed on components I, II and III of the airplane control system shows the following risk matrix:



The project wants to mitigate the risks by defining different types of coverage depending on the risk level of the components. Which of the following would be a meaningful solution for setting the coverage targets? 2 credits [K3]

Number of correct answers: 1

- A. I: Condition determination coverage, II: Decision Coverage, III: Statement coverage



B. I: Condition determination coverage, II: Statement coverage, III: Decision coverage

C. I: Decision coverage, II: Condition determination coverage, III: Statement Coverage

D. I: Multiple condition coverage, II: Decision coverage, III: Condition determination coverage

Correct Answer: A

QUESTION 4

Scenario:

“Tax system” (Questions 52 – 53)

Due to new legislation the tax system needs to be updated. For a person that has a salary less than € 20.000, the tax needs to be re-calculated. If the person also has more than two children an additional 10% reduction is applicable.

For equivalence partitioning based on this specification, how many output classes can be determined? 2 credits [K3]

	1	2	3	4	5	6	7	8
C1	1	1	1	1	0	0	0	0
C2	1	1	0	0	1	1	0	0
C3	1	0	1	0	1	0	1	0
A1	X	X						
A2	X							

Number of correct answers: 1

A. 2

B. 3

C. 4

D. 5

Correct Answer: B

QUESTION 5

Which of the following is the most important benefit of making exploratory testing part of your test approach for the "Bonus Program"?



3 credits [K4]

Number of correct answers: 1

- A. The ability to utilize a very experienced test team
- B. The ability to accurately predict the residual risk prior to delivery
- C. The ability to prevent defects during requirements analysis
- D. The ability to test effectively without a complete test basis

Correct Answer: D

[Latest CTAL-TTA_001
Dumps](#)

[CTAL-TTA_001 Practice
Test](#)

[CTAL-TTA_001 Study
Guide](#)