



COG-645^{Q&As}

IBM Cognos 10 BI Multidimensional Author

Pass IBM COG-645 Exam with 100% Guarantee

Free Download Real Questions & Answers **PDF** and **VCE** file from:

<https://www.passapply.com/COG-645.html>

100% Passing Guarantee
100% Money Back Assurance

Following Questions and Answers are all new published by IBM Official Exam Center

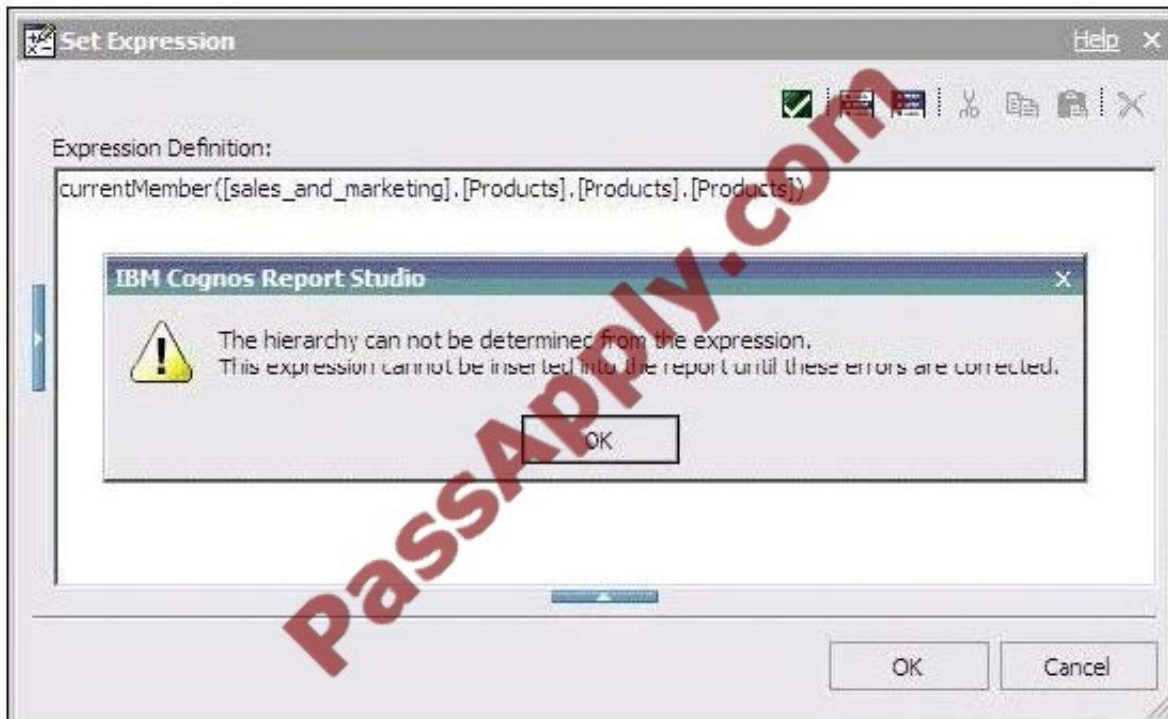
-  **Instant Download** After Purchase
-  **100% Money Back** Guarantee
-  **365 Days** Free Update
-  **800,000+** Satisfied Customers





QUESTION 1

The dialog box shown appears when a report is run.



What should the report author do to correct the situation?

- A. Ask the modeler to rename the hierarchy to `\"[sales_and_marketing].[Products].[Products].[Products]\"`, and to republish the package.
- B. Modify the expression to change the `\"currentMember\"` function to `\"currentLevel\"`.
- C. Modify the expression to change the `\"currentMember\"` function to `\"currentHierarchy\"`.
- D. Modify the expression to `\"currentMember([sales_and_marketing].[Products].[Products])\"`.

Correct Answer: D

QUESTION 2

A report author creates the following nested report using 2 adjacent levels of the same hierarchy. Users should be able to drill down on the inner nesting with the outer nesting remaining unchanged.



Revenue		2006 Q 1	Revenue		2006 Q 1
Camping Equipment	Cooking Gear	19,319,932.91	Camping Equipment	Star Lite	11,450,505.30
	Tents	36,682,579.56		Star Dome	5,891,020.45
	Sleeping Bags	24,667,784.02		Star Gazer 2	10,700,822.00
	Packs	26,008,583.62		Star Gazer 3	5,976,470.76
	Lanterns	9,171,666.90		Star Gazer 6	2,350,784.55
Personal Accessories	Watches	34,824,622.61		Star Peg	312,976.50
	Eyewear	62,160,277.03	Personal Accessories		131,719,858.12
	Knives	10,995,773.63			
	Binoculars	9,985,333.90			

What advanced drilling behavior should the report author use to achieve this?

- A. Replace Expression
- B. Depth Based Expression
- C. Preserve
- D. Replace Item

Correct Answer: C

QUESTION 3

A report author has created a crosstab report from the data source shown. The Retailer name level has been dragged to the rows and default drilling up and down has been activated.



What will be displayed in the report if the consumer drills up on one of the members of Retailer name?

- A. The parent member of the member drilled on.
- B. The ancestors of the member drilled on from the whole Retailers hierarchy.
- C. The members from the Region level.
- D. The members from the Retailer country level.

Correct Answer: D



QUESTION 4

The report author creates a source report that contains values from "Products" on which the report consumer will drill through for details. The report author has created a target report which expects a member from the source. Is this a supported drill-through combination?

- A. Yes, this value-to-member drill-through is a supported combination.
- B. No, this value-to-member drill-through is not a supported combination.
- C. No, this member-to-value drill-through is not a supported combination.
- D. Yes, this member-to-value drill-through is a supported combination.

Correct Answer: B

QUESTION 5

The following expression is used to focus OLAP data in the rows of a report: filter([sales_and_marketing].[Order method].[Order method].[Order method type], [Revenue]>150000000).

Revenue	2004	2005	2006	2007
Telephone	178,793,580.36	107,160,284.09	37,199,842.80	17,832,073.81
Sales visit	101,072,721.10	79,721,524.37	73,918,652.38	55,481,936.15
Web	473,771,464.65	881,315,747.68	1,339,714,172.77	1,017,434,523.30
E-mail	95,402,796.21	44,318,886.43	23,701,042.57	16,420,318.95

Which of the following statements describes the purpose of the expression?

- A. To return the set of members whose revenue is less than 150000000 for any year.
- B. To return the set of members whose revenue is greater than 150000000 for the sum of the opposite edge.
- C. To filter the cell values by subtracting 150000000 from the revenue for each year and order method type.
- D. To filter the years to show those having revenues greater than 150000000 by order method type.

Correct Answer: B



To Read the [Whole Q&As](#), please purchase the [Complete Version](#) from [Our website](#).

Try our product !

100% Guaranteed Success
100% Money Back Guarantee
365 Days Free Update
Instant Download After Purchase
24x7 Customer Support
Average 99.9% Success Rate
More than 800,000 Satisfied Customers Worldwide
Multi-Platform capabilities - [Windows](#), [Mac](#), [Android](#), [iPhone](#), [iPod](#), [iPad](#), [Kindle](#)

We provide exam PDF and VCE of Cisco, Microsoft, IBM, CompTIA, Oracle and other IT Certifications. You can view Vendor list of All Certification Exams offered:

<https://www.passapply.com/allproducts>

Need Help

Please provide as much detail as possible so we can best assist you.
To update a previously submitted ticket:



 <p>One Year Free Update Free update is available within One Year after your purchase. After One Year, you will get 50% discounts for updating. And we are proud to boast a 24/7 efficient Customer Support system via Email.</p>	 <p>Money Back Guarantee To ensure that you are spending on quality products, we provide 100% money back guarantee for 30 days from the date of purchase.</p>	 <p>Security & Privacy We respect customer privacy. We use McAfee's security service to provide you with utmost security for your personal information & peace of mind.</p>
---	---	--

Any charges made through this site will appear as Global Simulators Limited.
All trademarks are the property of their respective owners.
Copyright © passapply, All Rights Reserved.