



# COG-632<sup>Q&As</sup>

IBM Cognos 10 BI Metadata Model Developer

## Pass IBM COG-632 Exam with 100% Guarantee

Free Download Real Questions & Answers **PDF** and **VCE** file from:

<https://www.passapply.com/COG-632.html>

100% Passing Guarantee  
100% Money Back Assurance

Following Questions and Answers are all new published by IBM Official Exam Center

-  **Instant Download** After Purchase
-  **100% Money Back** Guarantee
-  **365 Days** Free Update
-  **800,000+** Satisfied Customers





### QUESTION 1

In Framework Manager, which of the following will have a negative impact on query performance?

- A. Enable the Allow Enhanced Model Portability governor.
- B. Set the Cross-product joins and Outer Joins governors to Deny.
- C. Add filters and calculations to model query subjects rather than data source query subjects.
- D. Ensure that, where required, queries are executed against materialized views which contain only aggregated data rather than base tables that contain all the data.

Correct Answer: A

---

### QUESTION 2

Which of the following data structures typically contain normalized data?

- A. Cube
- B. Relational
- C. Operational
- D. Data Warehouse

Correct Answer: C

---

### QUESTION 3

A user-defined function imported into Framework Manager can be viewed and used in the following locations?

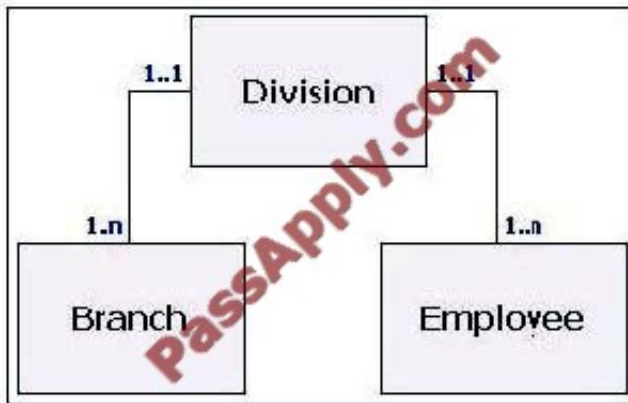
- A. Viewed in the Explorer and used in the expression editor.
- B. Viewed in the Project Viewer and used in the expression editor.
- C. Viewed in the Explorer and used in the SQL of a model query subject.
- D. Viewed in the Diagram and used in the SQL of a data source query subject.

Correct Answer: A

---

### QUESTION 4

The illustration below represents which of the following data traps?



- A. Bridge
- B. Connection
- C. Parallel relationship
- D. Many-to-many relationship

Correct Answer: C

#### QUESTION 5

What technique can Framework Manager modelers use to implement a time dimension for models that lack a time dimension?

- A. Create relationships from date fields in one dimension to date fields in another dimension.
- B. Use parameter maps to map date values in one query subject to date values in another query subject.
- C. Use the Time Dimension wizard to generate a time dimension and create the appropriate relationships.
- D. Identify a time dimension table source, import into the model and create relationships to fact query subjects.

Correct Answer: D

[Latest COG-632 Dumps](#)

[COG-632 Study Guide](#)

[COG-632 Exam Questions](#)



To Read the [Whole Q&As](#), please purchase the [Complete Version](#) from [Our website](#).

## Try our product !

100% Guaranteed Success  
100% Money Back Guarantee  
365 Days Free Update  
Instant Download After Purchase  
24x7 Customer Support  
Average 99.9% Success Rate  
More than 800,000 Satisfied Customers Worldwide  
Multi-Platform capabilities - [Windows](#), [Mac](#), [Android](#), [iPhone](#), [iPod](#), [iPad](#), [Kindle](#)

We provide exam PDF and VCE of Cisco, Microsoft, IBM, CompTIA, Oracle and other IT Certifications. You can view Vendor list of All Certification Exams offered:

<https://www.passapply.com/allproducts>

## Need Help

Please provide as much detail as possible so we can best assist you.  
To update a previously submitted ticket:



 <p><b>One Year Free Update</b> Free update is available within One Year after your purchase. After One Year, you will get 50% discounts for updating. And we are proud to boast a 24/7 efficient Customer Support system via Email.</p>	 <p><b>Money Back Guarantee</b> To ensure that you are spending on quality products, we provide 100% money back guarantee for 30 days from the date of purchase.</p>	 <p><b>Security &amp; Privacy</b> We respect customer privacy. We use McAfee's security service to provide you with utmost security for your personal information &amp; peace of mind.</p>
---------------------------------------------------------------------------------------------------------------------------------------------------------------------------------------------------------------------------------------------------------------------------------------------------------------------------------	-------------------------------------------------------------------------------------------------------------------------------------------------------------------------------------------------------------------------------------------------------------	------------------------------------------------------------------------------------------------------------------------------------------------------------------------------------------------------------------------------------------------------------------------------------

Any charges made through this site will appear as Global Simulators Limited.  
All trademarks are the property of their respective owners.  
Copyright © passapply, All Rights Reserved.