



# C4040-109<sup>Q&As</sup>

Virtualization Technical Support for AIX and Linux - v2

## Pass IBM C4040-109 Exam with 100% Guarantee

Free Download Real Questions & Answers **PDF** and **VCE** file from:

<https://www.passapply.com/C4040-109.html>

100% Passing Guarantee  
100% Money Back Assurance

Following Questions and Answers are all new published by IBM Official Exam Center

-  **Instant Download** After Purchase
-  **100% Money Back** Guarantee
-  **365 Days** Free Update
-  **800,000+** Satisfied Customers





### QUESTION 1

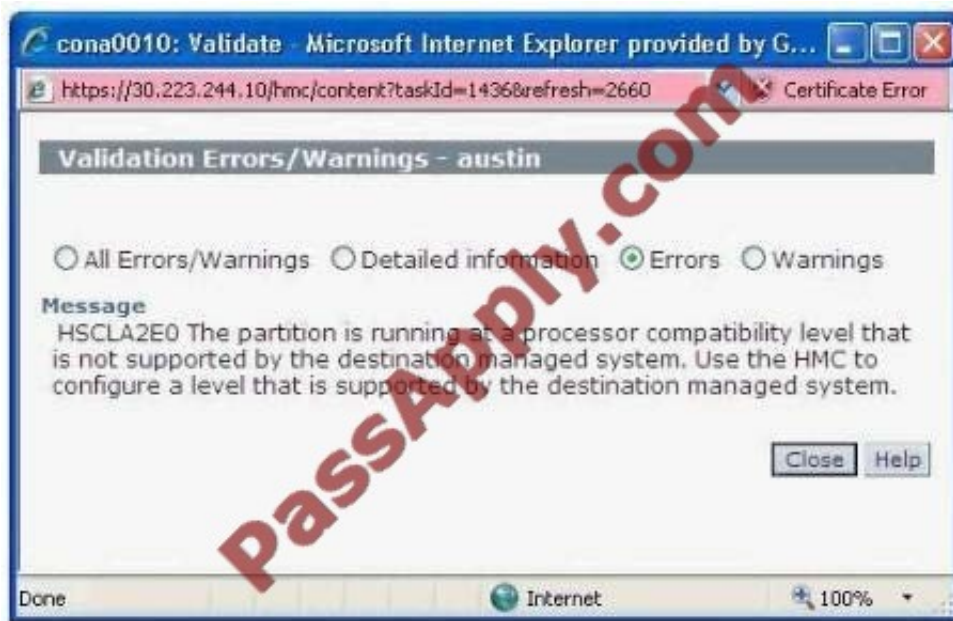
How can an existing AIX 5.2 LPAR, which is using SAN storage, be migrated into a versioned WPAR (Workload Partition)?

- A. Using LPM, but downtime will be required.
- B. Dynamically using LAM.
- C. Backup and restore a mksysb.
- D. Rezone the SAN storage and use NPIV.

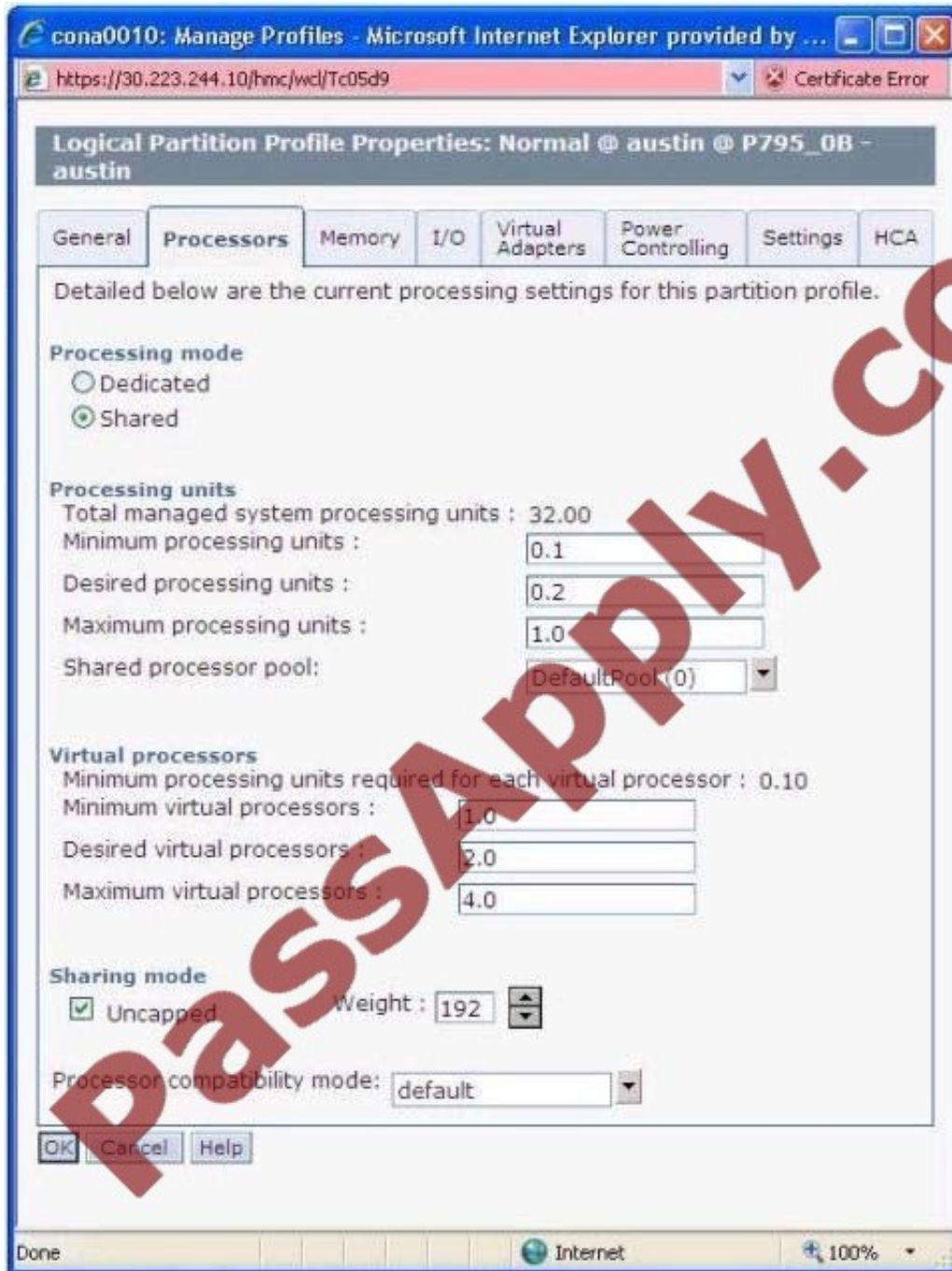
Correct Answer: C

### QUESTION 2

An administrator needs to migrate an AIX partition from a POWER7 server to a legacy POWER6 595. When performing a Live Partition Mobility operation, the following error is received:



Looking at the partition profile properties for CPU



Which of the following actions would solve the problem?

- A. Change the processor compatibility mode to LEGACY on the target system.
- B. Change the processor compatibility mode to POWER6 on the source partition.
- C. Change the processor compatibility mode to POWER7 on the source partition.
- D. Change the processor compatibility mode to ENHANCED on the target system

Correct Answer: A



### QUESTION 3

An architect is looking at the implications of uncapped weights for a new POWER7 system. The system will consist of four uncapped logical partitions with the following weightings:

LPAR Weight	
A	125
B	150
C	100
D	125

Assuming all partitions have equal entitlement and virtual processor configurations in the partition profiles, and request additional resources from the shared processor pool over a period of 1000 cycles, how many cycles will be allocated to LPAR B?

- A. 150
- B. 250
- C. 300
- D. 1000

Correct Answer: C

### QUESTION 4

An administrator is planning to configure two new Power Systems servers for Live Partition Mobility (LPM). Each server will be connected to a separate HMC. What is required to achieve this in addition to those requirements needed for LPM with a common HMC?

- A. An RMC connection between each VIO partition SSL key exchange between each VIO partition and all FSPs
- B. An RMC connection between both HMCs SSH key exchange between all HMCs and FSPs
- C. A common IP network between all VIO partitions RMC key exchange between both HMCs and all VIO partitions
- D. A common IP network between both HMCs SSH key exchange between both HMCs

Correct Answer: D

### QUESTION 5

Given the following lspath command output from an LPAR, what is the most likely reason for the current situation? \$  
lspath Failed hdisk0 vscsi0 Enabled hdisk0 vscsi1 Failed hdisk1 fscsi0 Failed hdisk1 fscsi0 Enabled hdisk1 fscsi1  
Enabled hdisk1 fscsi1 Failed hdisk2 fscsi0 Failed hdisk2 fscsi0 Enabled hdisk2 fscsi1 Enabled hdisk2 fscsi1 Failed  
hdisk3 fscsi0 Failed hdisk3 fscsi0 Enabled hdisk3 fscsi1 Enabled hdisk3 fscsi1

- A. SDDPCM daemon not loaded



- B. Partial SAN failure
- C. Redundant VIO server outage
- D. Incomplete NPIV configuration

Correct Answer: C

[Latest C4040-109 Dumps](#)

[C4040-109 PDF Dumps](#)

[C4040-109 Practice Test](#)



To Read the [Whole Q&As](#), please purchase the [Complete Version](#) from [Our website](#).

## Try our product !

100% Guaranteed Success  
100% Money Back Guarantee  
365 Days Free Update  
Instant Download After Purchase  
24x7 Customer Support  
Average 99.9% Success Rate  
More than 800,000 Satisfied Customers Worldwide  
Multi-Platform capabilities - Windows, Mac, Android, iPhone, iPod, iPad, Kindle

We provide exam PDF and VCE of Cisco, Microsoft, IBM, CompTIA, Oracle and other IT Certifications.  
You can view Vendor list of All Certification Exams offered:

<https://www.passapply.com/allproducts>

## Need Help

Please provide as much detail as possible so we can best assist you.  
To update a previously submitted ticket:



 <b>One Year Free Update</b> Free update is available within One Year after your purchase. After One Year, you will get 50% discounts for updating. And we are proud to boast a 24/7 efficient Customer Support system via Email.	 <b>Money Back Guarantee</b> To ensure that you are spending on quality products, we provide 100% money back guarantee for 30 days from the date of purchase.	 <b>Security &amp; Privacy</b> We respect customer privacy. We use McAfee's security service to provide you with utmost security for your personal information & peace of mind.
---	---	--

Any charges made through this site will appear as Global Simulators Limited.  
All trademarks are the property of their respective owners.  
Copyright © passapply, All Rights Reserved.