



C2020-011^{Q&As}

IBM SPSS Statistics Level 1 v2

Pass IBM C2020-011 Exam with 100% Guarantee

Free Download Real Questions & Answers **PDF** and **VCE** file from:

<https://www.passapply.com/C2020-011.html>

100% Passing Guarantee
100% Money Back Assurance

Following Questions and Answers are all new published by IBM Official Exam Center

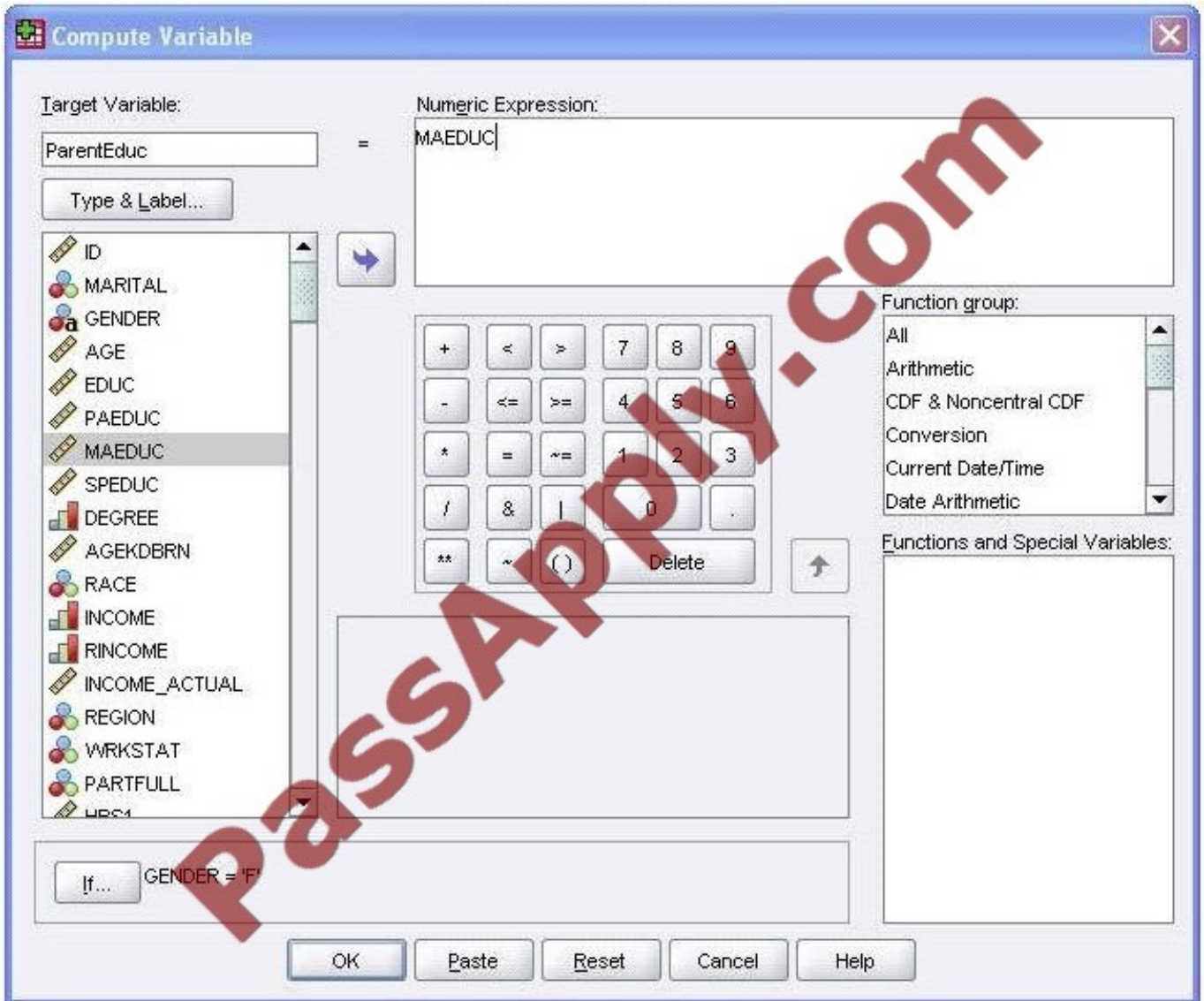
-  **Instant Download** After Purchase
-  **100% Money Back** Guarantee
-  **365 Days** Free Update
-  **800,000+** Satisfied Customers





QUESTION 1

The Compute Variable dialog shown below performs which of the following operations? (Choose two.)



- A. Sets the value of ParentEduc equal to the value of MAEDUC.
- B. Sets the value of ParentEduc equal to the value of MAEDUC if the value of GENDER is
- C.
- D. Sets the value of ParentEduc equal to the system-missing value if the value of GENDER is blank.
- E. Sets the value of ParentEduc equal to the user-missing value if the value of GENDER is blank.

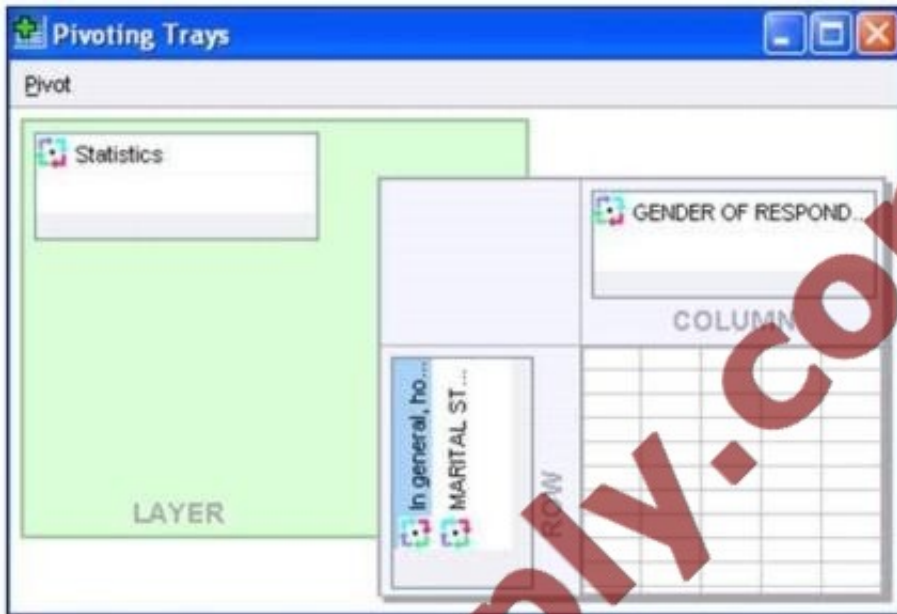
Correct Answer: BC



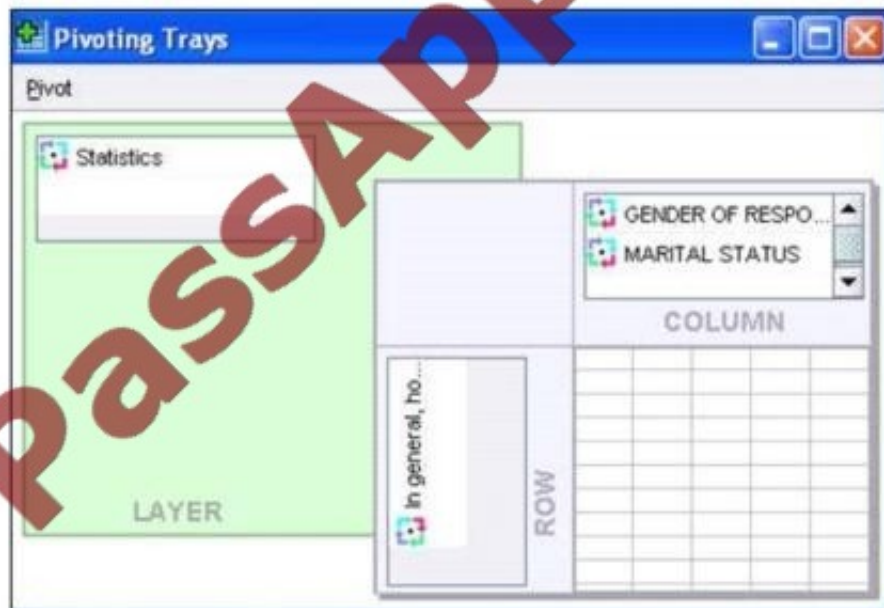
QUESTION 2

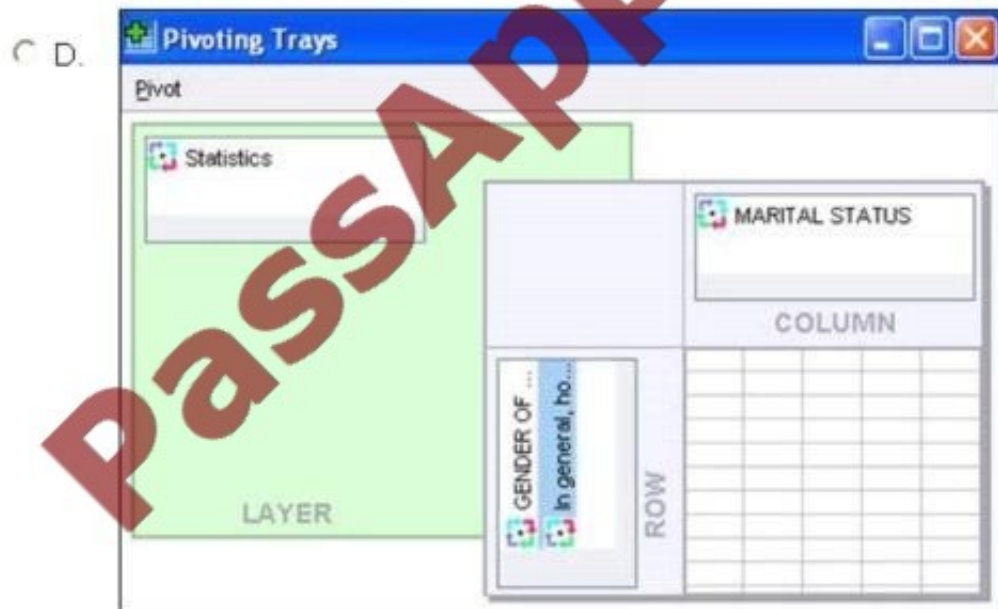
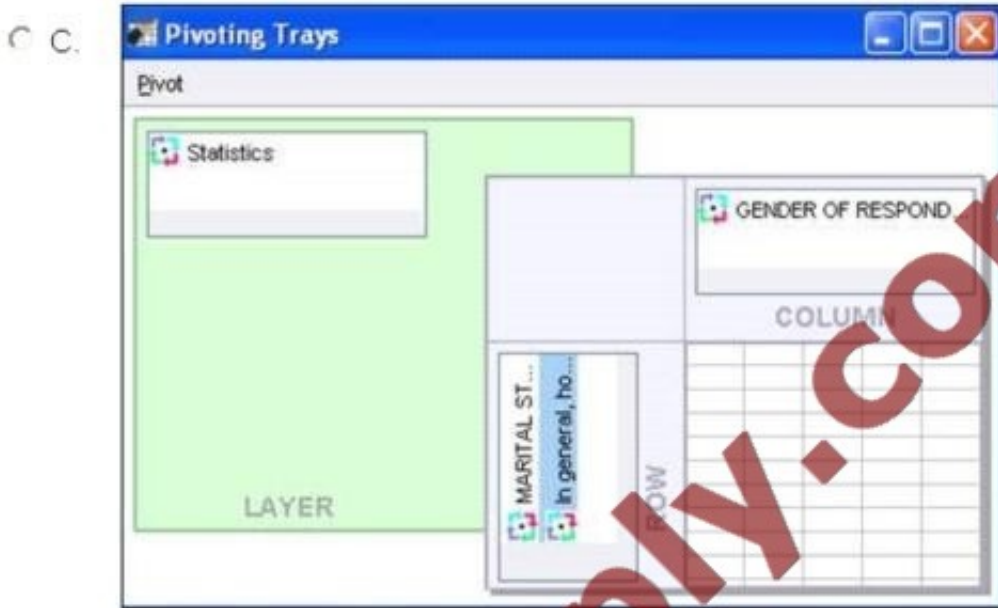
Which Pivoting Tray corresponds to the illustrated cross tabulation?

C A.



C B.





- A. Option A
- B. Option B
- C. Option C
- D. Option D

Correct Answer: C

QUESTION 3

A paired samples t-test is different from an independent t-test because it:



- A. Assesses each person twice.
- B. Compares groups on correlations.
- C. Compares groups on means.
- D. Compares groups on variances.

Correct Answer: A

QUESTION 4

Consider the data file below and answer the following: The calculation of the mean of the variables X, Y, Z is contained in the variable Av_XYZ. What method was used to calculate the mean?

	X	Y	Z	Av_XYZ
1	4.00	1.00	4.00	3.00
2	.	1.00	.	.
3	4.00	2.00	3.00	3.00
4	5.00	.	6.00	5.50
5	6.00	12.00	7.00	8.33

- A. The Compute Variable dialog and the expression $(X+Y+Z) / 3$
- B. The Compute Variable dialog and the expression $X+Y+Z/3$
- C. The Compute Variable dialog and the expression $MEAN(X, Y, Z)$
- D. The Compute Variable dialog and the expression $MEAN.2(X, Y, Z)$

Correct Answer: D

QUESTION 5

With IBM SPSS Statistics you can assign one of three levels of measurement to a variable. Which is the correct list of all three levels?



- A. Nominal - Ordinal - Interval
- B. Categorical - Interval - Ratio
- C. Nominal - Ordinal - Scale
- D. Nominal - Interval ?Scale

Correct Answer: C

[Latest C2020-011 Dumps](#)

[C2020-011 Exam Questions](#)

[C2020-011 Braindumps](#)



To Read the [Whole Q&As](#), please purchase the [Complete Version](#) from [Our website](#).

Try our product !

100% Guaranteed Success
100% Money Back Guarantee
365 Days Free Update
Instant Download After Purchase
24x7 Customer Support
Average 99.9% Success Rate
More than 800,000 Satisfied Customers Worldwide
Multi-Platform capabilities - [Windows](#), [Mac](#), [Android](#), [iPhone](#), [iPod](#), [iPad](#), [Kindle](#)

We provide exam PDF and VCE of Cisco, Microsoft, IBM, CompTIA, Oracle and other IT Certifications. You can view Vendor list of All Certification Exams offered:

<https://www.passapply.com/allproducts>

Need Help

Please provide as much detail as possible so we can best assist you.
To update a previously submitted ticket:



 <p>One Year Free Update Free update is available within One Year after your purchase. After One Year, you will get 50% discounts for updating. And we are proud to boast a 24/7 efficient Customer Support system via Email.</p>	 <p>Money Back Guarantee To ensure that you are spending on quality products, we provide 100% money back guarantee for 30 days from the date of purchase.</p>	 <p>Security & Privacy We respect customer privacy. We use McAfee's security service to provide you with utmost security for your personal information & peace of mind.</p>
---	---	--

Any charges made through this site will appear as Global Simulators Limited.
All trademarks are the property of their respective owners.
Copyright © passapply, All Rights Reserved.