



BH0-004^{Q&As}

ISEB ISTQB Certificate in Software Testing

Pass ISEB BH0-004 Exam with 100% Guarantee

Free Download Real Questions & Answers **PDF** and **VCE** file from:

<https://www.passapply.com/bh0-004.html>

100% Passing Guarantee
100% Money Back Assurance

Following Questions and Answers are all new published by ISEB
Official Exam Center

-  **Instant Download** After Purchase
-  **100% Money Back** Guarantee
-  **365 Days** Free Update
-  **800,000+** Satisfied Customers





QUESTION 1

What is the MAIN benefit of designing tests early in the life cycle?

- A. It is cheaper than designing tests during the test phases.
- B. It helps prevent defects from being introduced into the code.
- C. Tests designed early are more effective than tests designed later.
- D. It saves time during the testing phases when testers are busy.

Correct Answer: B

QUESTION 2

Given the following fragment of code, how many tests are required for 100% decision coverage?

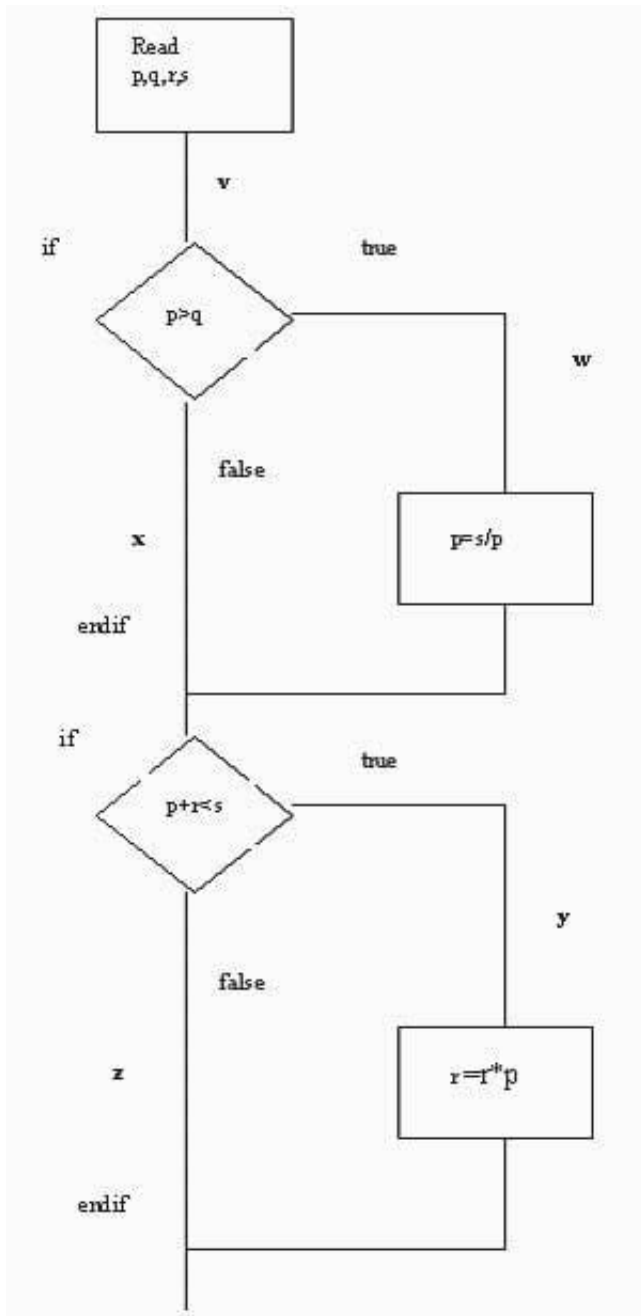
```
if width > length then biggest_dimension = width  
if height > width then biggest_dimension = height  
end_if  
else  
  biggest_dimension = length  
if height > length then biggest_dimension = height  
end_if  
end_if
```

- A. 3
- B. 4
- C. 2
- D. 1

Correct Answer: B

QUESTION 3

The above diagram represents the following paths through the code.



- A. vwy
- B. vwz
- C. vxy
- D. vxz

What is the MINIMUM combination of paths required to provide full statement coverage?

- A. A
- B. ABD
- C. ABCD



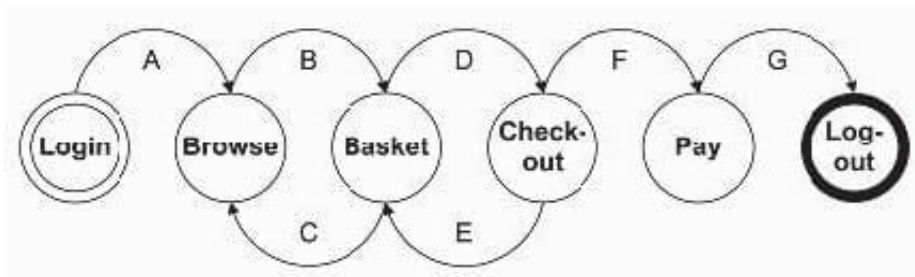
D. ACD

Correct Answer: A

QUESTION 4

Given the following state transition diagram

Which of the following series of state transitions contains an INVALID transition which may indicate a fault in the system design?



A. Login Browse Basket Checkout Basket Checkout Pay Logout.

B. Login Browse Basket Checkout Pay Logout.

C. Login Browse Basket Checkout Basket Logout.

D. Login Browse Basket Browse Basket Checkout Pay Logout.

Correct Answer: C

QUESTION 5

What is the MAIN objective when reviewing a software deliverable?

A. To identify potential application failures by use of a test specification.

B. To identify defects in any software work product.

C. To identify spelling mistakes in a requirements specification.

D. To identify standards inconsistencies in the code.

Correct Answer: B