



# A30-327<sup>Q&As</sup>

AccessData Certified Examiner

## Pass AccessData A30-327 Exam with 100% Guarantee

Free Download Real Questions & Answers **PDF** and **VCE** file from:

<https://www.passapply.com/a30-327.html>

100% Passing Guarantee  
100% Money Back Assurance

Following Questions and Answers are all new published by AccessData  
Official Exam Center

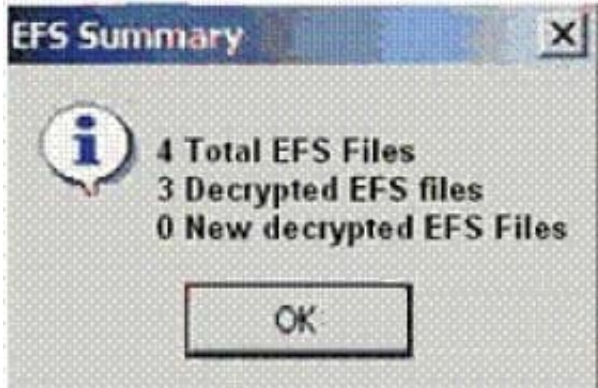
- ⚙️ **Instant Download** After Purchase
- ⚙️ **100% Money Back** Guarantee
- ⚙️ **365 Days** Free Update
- ⚙️ **800,000+** Satisfied Customers





### QUESTION 1

Click the Exhibit button.



When decrypting EFS files in a case, you receive the result shown in the exhibit.

What is the most plausible explanation for this result?

- A. The encrypted file was corrupt.
- B. A different user encrypted the remaining encrypted file.
- C. The hash value of the remaining encrypted file did not match.
- D. The remaining encrypted file had previously been bookmarked.
- E. An incorrect CRC value for the \$EFS certificate was applied by the user.

Correct Answer: B

---

### QUESTION 2

Which statement is true about using FTK Imager to export a folder and its subfolders?

- A. Exporting a folder will copy all its subfolders.
- B. Each subfolder must be exported individually.
- C. Exporting a folder copies only the folder without any files.
- D. Exporting a folder will copy all subfolders without the system attribute.

Correct Answer: A

---



### QUESTION 3

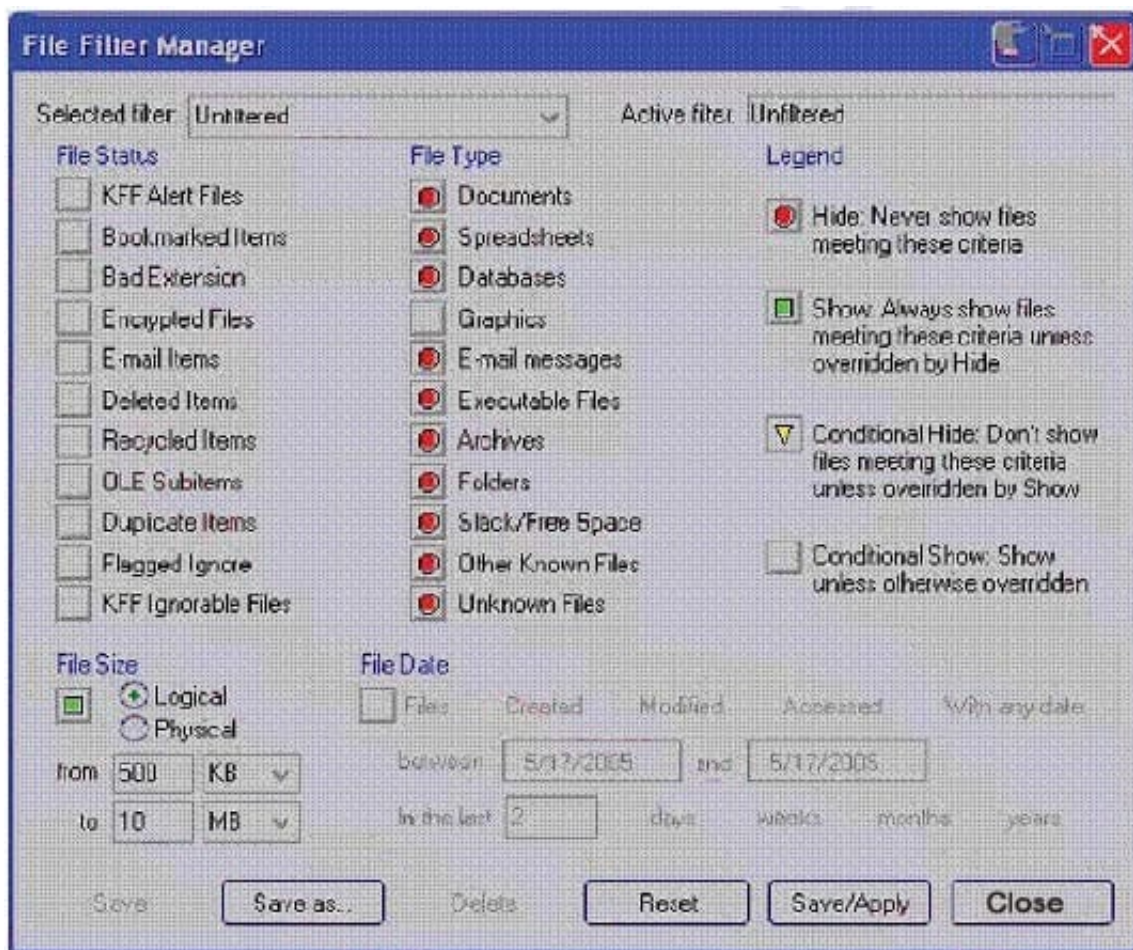
Which three items are displayed in FTK Imager for an individual file in the Properties window? (Choose three.)

- A. flags
- B. filename
- C. hash set
- D. timestamps
- E. item number

Correct Answer: ABD

### QUESTION 4

Click the Exhibit button.



What change do you make to the file filter shown in the exhibit in order to show only graphics with a logical size between 500 kilobytes and 10 megabytes?



- A. You change all file status items to a red circle.
- B. You change all file status items to a yellow triangle.
- C. You make no change. The filter is correct as shown.
- D. You change Graphics in the File Type column to a yellow triangle.

Correct Answer: D

---

#### QUESTION 5

You are asked to process a case using FTK and to produce a report that only includes selected graphics. What allows you to display only flagged graphics?

- A. List by File Path
- B. List File Properties
- C. Graphic Thumbnails
- D. Supplementary Files

Correct Answer: C

[Latest A30-327 Dumps](#)

[A30-327 Practice Test](#)

[A30-327 Study Guide](#)