



A00-270^{Q&As}

SAS BI Content Development

Pass SASInstitute A00-270 Exam with 100% Guarantee

Free Download Real Questions & Answers **PDF** and **VCE** file from:

<https://www.passapply.com/a00-270.html>

100% Passing Guarantee
100% Money Back Assurance

Following Questions and Answers are all new published by SASInstitute Official Exam Center

-  **Instant Download** After Purchase
-  **100% Money Back** Guarantee
-  **365 Days** Free Update
-  **800,000+** Satisfied Customers





QUESTION 1

The metadata libname engine is commonly used with stored process to ensure that metadata security is enforced to control access to the data. Which options do not have a default value and must be manually coded in the libname statement?

- A. PORT = option AND PROTOCOL = option
- B. REPNAMES = option OR REPID = option
- C. LIBRARY = option OR LIBID = option
- D. USERID = option AND PASSWORD = option

Correct Answer: C

QUESTION 2

A SAS report has been created in SAS Enterprise Guide and made available to SAS Web Report Studio. Which alterations can be made to the report in SAS Web Report Studio?

- A. Only headers and footers can be changed.
- B. No changes can be made.
- C. Report objects can be moved or deleted.
- D. Additional report objects can be added.

Correct Answer: B

QUESTION 3

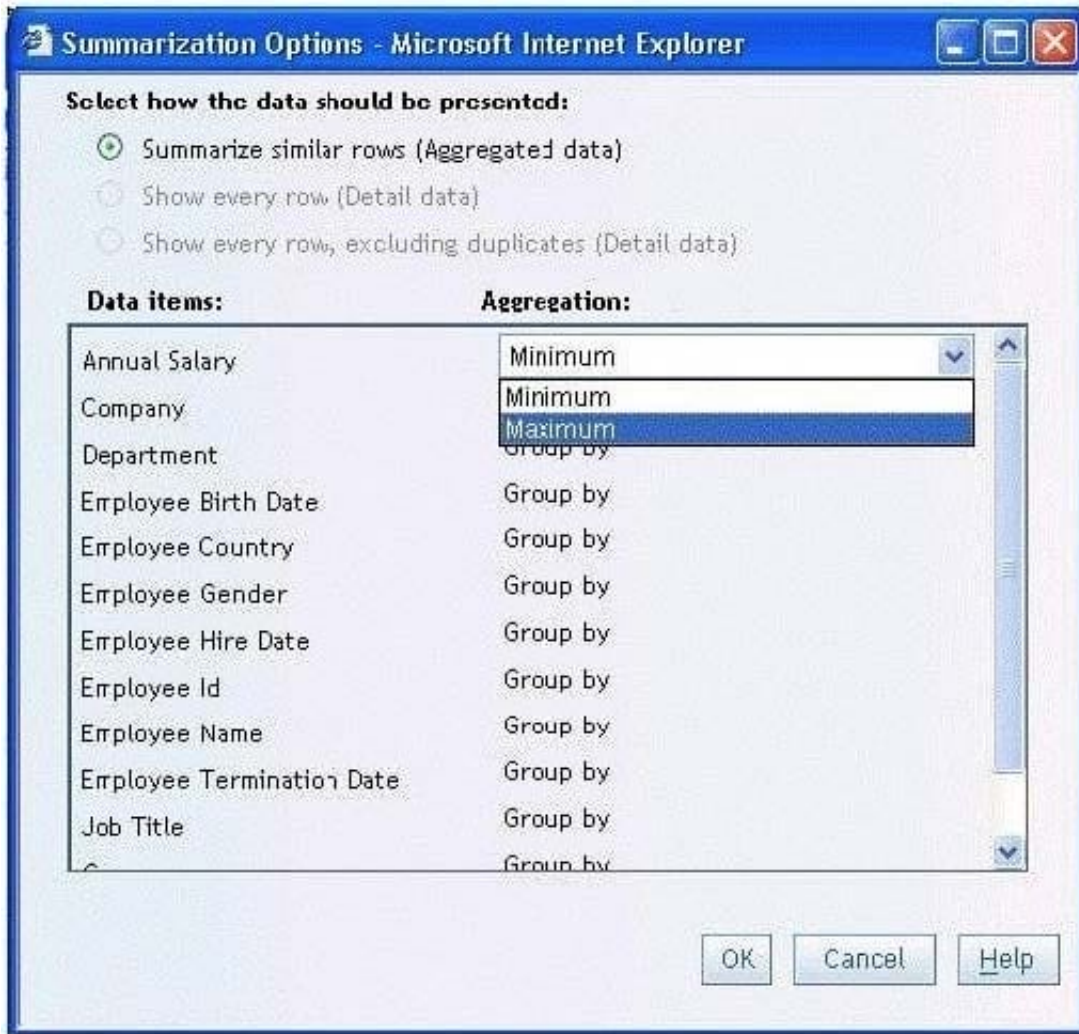
An OLAP Cube hierarchy is defined as:

- A. An organized set of categories, known as dimensions, that describes the data in a source table
- B. An organized set of NWAY crossings
- C. An organized set of numeric values that have been pre-aggregated
- D. An organized set of categories, known as levels, that describes the data in a source table

Correct Answer: A

QUESTION 4

Refer to Exhibit: A SAS Web Report Studio user is changing the summarization option for Annual Salary and the only aggregations allowed are Minimum and Maximum. Why is the list limited to only these two choices?



- A. The user is assigned to a role that only allows these aggregations.
- B. SAS Web Report Studio only supports these aggregations.
- C. These are the only aggregations supported for currency data items.
- D. The information map creator has limited the available aggregations.

Correct Answer: D

QUESTION 5

Which statement is true about SAS BIDashboard indicator interactions?

- A. Interactions are supported by all indicator display types
- B. Filter interactions always occur on the server
- C. Interactions are defined when the dashboard is created
- D. The target is selected before opening the \\Set Up Indicator Interacts window



Correct Answer: A

[A00-270 PDF Dumps](#)

[A00-270 Exam Questions](#)

[A00-270 Braindumps](#)