



9L0-412^{Q&As}

OS X Support Essentials 10.8 Exam

Pass Apple 9L0-412 Exam with 100% Guarantee

Free Download Real Questions & Answers **PDF** and **VCE** file from:

<https://www.passapply.com/9L0-412.html>

100% Passing Guarantee
100% Money Back Assurance

Following Questions and Answers are all new published by Apple
Official Exam Center

-  **Instant Download** After Purchase
-  **100% Money Back** Guarantee
-  **365 Days** Free Update
-  **800,000+** Satisfied Customers





QUESTION 1

In OS X Mountain Lion, which TWO types of file service hosts can you browse in the Network folder? (Select 2)

- A. WebDAV
- B. FTP
- C. DFS
- D. SMB
- E. AFP

Correct Answer: DE

QUESTION 2

When a user logs in, which task is NOT performed by the user's loginwindow or launchd processes?

- A. Configure input device and system settings according to System Preferences.
- B. Launch items in /Library/LaunchDaemons.
- C. Launch Login Items specified in Users and Groups preferences.
- D. Launch Dock and Finder.

Correct Answer: B

QUESTION 3

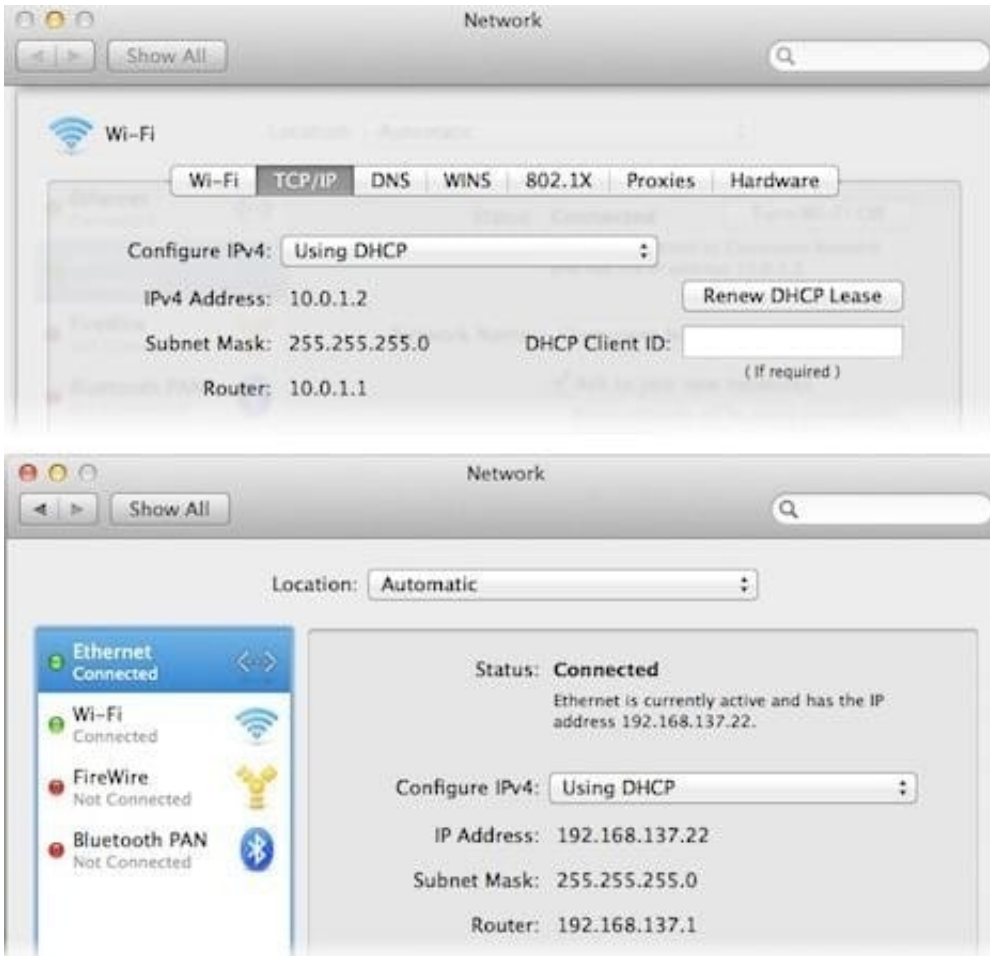
For the Messages app to initiate a screen sharing session between two OS X computers, screen sharing must be enabled in the Sharing preferences on at least one of the two computers.

- A. True
- B. False

Correct Answer: B

QUESTION 4

Review the screenshots of a Mac computer's Network pane, and then answer the question below.



If a Mac with the network configuration shown above needs to initiate a connection to a server at address 17.20.8.9, which interface will it use to do so?

- A. Neither interface: this computer cannot communicate with the server at 17.20.8.9.
- B. Wi-Fi
- C. Either interface may be used, based on automatic routing.
- D. Ethernet

Correct Answer: C

QUESTION 5

You started up a Mac from its OS X Recovery partition to complete a task. When you restarted, the Mac started up from the OS X Recovery partition again. How can you configure it to start up from a different volume?

- A. Choose Disk Utility from the Apple menu, and select a startup volume.
- B. Choose Startup Disk from the Apple menu, and select a startup volume.
- C. Choose Startup Disk in the OS X Utilities window, and select a startup volume.



D. Choose Terminal from the Utilities menu, type startupdisk -[volume name] and press Return.

Correct Answer: B

[Latest 9L0-412 Dumps](#)

[9L0-412 PDF Dumps](#)

[9L0-412 VCE Dumps](#)