



# 9A0-142<sup>Q&As</sup>

Adobe InDesign CS5 ACE Exam

**Pass Adobe 9A0-142 Exam with 100% Guarantee**

Free Download Real Questions & Answers **PDF** and **VCE** file from:

<https://www.passapply.com/9a0-142.html>

100% Passing Guarantee  
100% Money Back Assurance

Following Questions and Answers are all new published by Adobe  
Official Exam Center

-  **Instant Download** After Purchase
-  **100% Money Back** Guarantee
-  **365 Days** Free Update
-  **800,000+** Satisfied Customers





### QUESTION 1

Which of the following are the various web-oriented bitmap formats? Each correct answer represents a complete solution. Choose all that apply.

- A. CNG
- B. JPEG
- C. GIF
- D. PNG

Correct Answer: BCD

Following are the various Web-oriented bitmap formats.

- 1.GIF or Graphics Interchange Format
  - 2.JPEG or Joint Photographic Experts Group
  - 3.PNG or Portable Network Graphics
- 

### QUESTION 2

Which of the following options is NOT included in Marks and Bleed area pane of the print dialog box?

- A. Color Bars
- B. Crop Marks
- C. Spreads
- D. Registration Marks

Correct Answer: C

This option is included in the General pane of the Print dialog box. Selecting this option prints facing pages on the same sheet of paper.

Answer: B is incorrect. It adds fine (hairline) horizontal and vertical rules that define where the page should be trimmed. Crop marks can also help register (align) one color separation to another.

Answer: D is incorrect. It adds small "targets" outside the page area for aligning the different separations in a color document.

Answer: A is incorrect. It adds small squares of color representing the CMYK inks and tints of gray. Your service provider uses these marks to adjust ink density on the printing press.

---

### QUESTION 3



Fill in the blank with the appropriate feature of InDesign CS5. allows search and replace operations that are based on regular expressions and not on the literal text in InDesign CS5.

Correct Answer: GREP

GREP stands for General Regular Expression Parser. GREP allows search and replace operations that are based on regular expression (regular expression means describing pattern or conditions within text, need not necessarily include one word or character of actual text) not on literal text. To open GREP, Choose Edit >Find/Change, and then click the GREP tab. On the GREP tab of the Find/Change dialog box, GREP expressions can be constructed to find alphanumeric strings and patterns in long documents or many open documents. GREP searches are case-sensitive by default.

---

#### QUESTION 4

You have created a Web page using InDesign CS5 with an extensive amount of information. You want to use hyperlinks for the convenience of the users of the Website so that the users can directly get to a particular section on the current Web page.

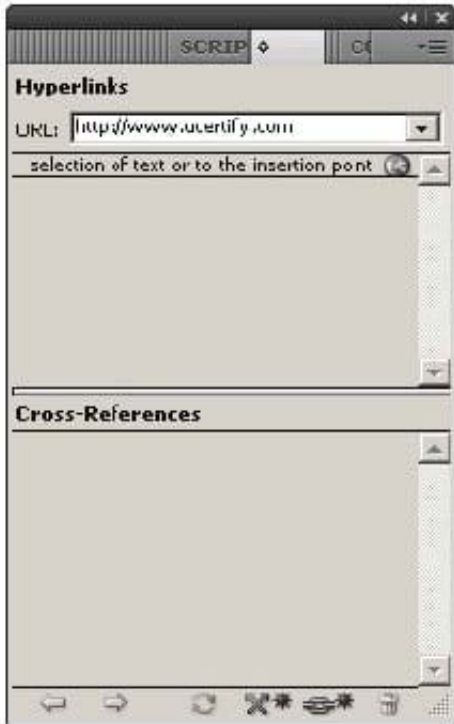
Which of the following will you specify in the 'Link To' menu of the New Hyperlink dialogue box to create hyperlinks to the Web page?

- A. Shared Destination
- B. Email
- C. URL
- D. Page

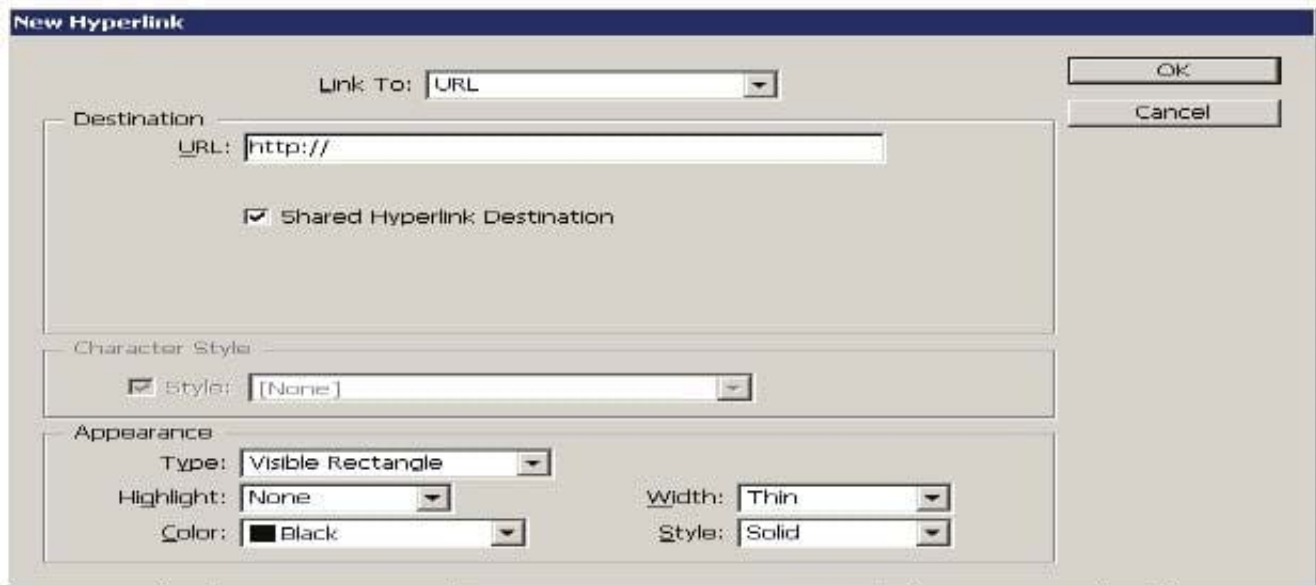
Correct Answer: C

When you are creating a hyperlink to a Webpage, the URL option will be specified in the 'Link To' menu as the hyperlink destination. When a user is creating a hyperlink to a webpage the following steps should be followed:

1. Select the text, frame, or graphic that needs to be the hyperlink's source.
2. Choose Window > Interactive > Hyperlink to open the Hyperlink panel.
3. In the URL text box of the Hyperlink panel, type or paste the URL name (such as <http://www.company.com>) which you want to use as hyperlink destination.
4. Choose New Hyperlink from the Hyperlinks panel.

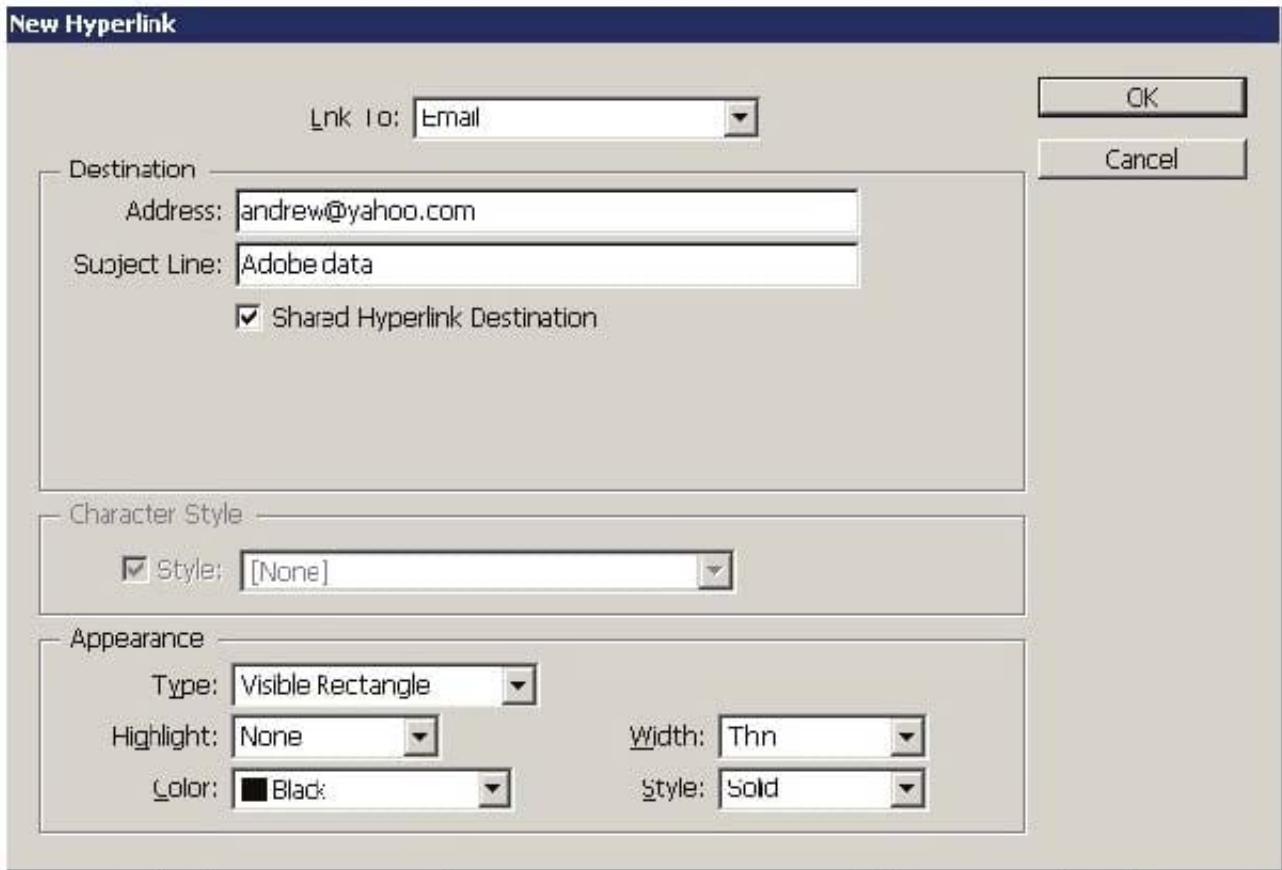


5. Choose URL from the Link To menu, specify appearance options, and click OK.



Answer: B is incorrect. Specify the Email option in the \\Link To\\ menu to create a hyperlink destination to an email. If a user wants to create hyperlink to an email message then following steps should be follow:

1. Select the text, frame, or graphic which a user wants to be the source of the hyperlink.
2. Choose New Hyperlink in the Hyperlinks panel menu, or click the Create New Hyperlink button at the bottom of the Hyperlinks panel.
3. In the New Hyperlink dialog box, choose Email from the Link To menu.



4. For Address, type the email address, such as andrew@yahoo.com.
5. For Subject Line, type the text that appears in the subject line of the email message.
6. Select Shared Hyperlink Destination if the email message needs to be stored in the Hyperlinks panel for easy reuse.
7. Specify the appearance of the hyperlink source as per requirement, and then click OK.

Answer: A is incorrect. Specify the Shared Destination option in the '\\Link To\\' menu to create a hyperlink destination to a shared destination.

1. Select the text, frame, or graphic which a user wants to be the source of the hyperlink.
2. Choose New Hyperlink in the Hyperlinks panel menu, or click the Create New Hyperlink button at the bottom of the Hyperlinks panel.
3. In the New Hyperlink dialog box, choose Shared Destination from the '\\Link To\\' menu.



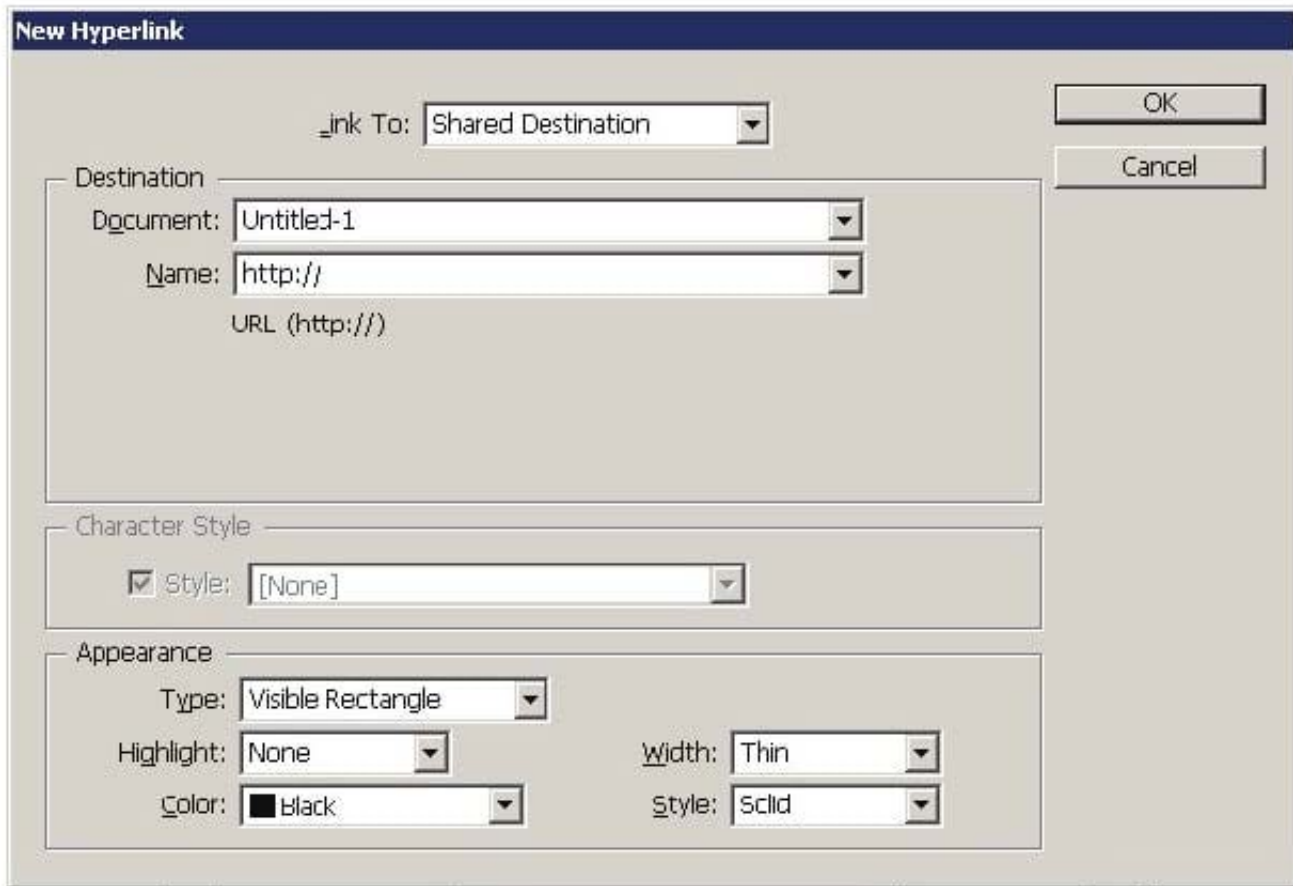
4. For Document, select the document containing the destination that a user wants to jump to. All open documents that have been saved are listed in the pop-up menu. If the document which a user is looking for is not open, select Browse in the pop-up menu, locate the file, and then click Open.

5. Choose a destination from the Name menu.

6. Specify hyperlink appearance options, and then click OK. Answer: D is incorrect. Specify the Page option in the '\\Link To\\' menu to create a hyperlink destination to a Page.

To create a hyperlink to a page take the following steps:

1. Select the text, frame, or graphic you want to be the source of the hyperlink.
2. Choose New Hyperlink in the Hyperlinks panel menu, or click the Create New Hyperlink button at the bottom of the Hyperlinks panel.
3. In the New Hyperlink dialog box, choose Page from the '\\Link To\\' menu.



4. For Document, select the document containing the destination that a user wants to jump to. All open documents that have been saved are listed in the pop-up menu. If the document which a user is looking for not open, select Browse in the pop-up menu, locate the file, and then click Open.

5. For Page, specify the page number a user wants to jump to.

6. For Zoom Setting, do one of the following to select the view state of the page being jumped to: Select Fixed to display the magnification level and page position that were in effect when the link is created.

Select Fit View to display the visible portion of the current page as the destination. Select Fit In Window to display the current page in the destination window. Select Fit Width or Fit Height to display the width or height of the current page in the destination window.

Select Fit Visible to display the page so that its text and graphics fit the width of the window, which usually means that the margins are not displayed. Select Inherit Zoom to display the destination window at the magnification level the

reader uses when the hyperlink is clicked.

7. Specify appearance options, and then click OK.

## QUESTION 5

You are creating a book in InDesign CS5. You want to replace an existing chapter with another document.



What will you do to accomplish this task?

- A. Choose Remove Document from the flyout menu or click the Remove Document iconic button (the - icon) from the bottom of the panel.
- B. Select the Automatic Document Conversion menu option in the book panel's flyout menu.
- C. Choose File >New > Book.
- D. Select the chapter in the book panel and then choose Replace Document from the flyout menu.

Correct Answer: D

To replace an existing chapter with another document, select the chapter in the book panel and then choose Replace Document from the flyout menu.

Answer: A is incorrect. If you choose Remove Document from the flyout menu or click the Remove Document iconic button (the - icon) from the bottom of the panel, it will delete chapters from the book.

Answer: B is incorrect. If the Automatic Document Conversion menu option is selected in the book panel's flyout menu, InDesign will convert all chapters created in the earlier versions of InDesign into the InDesign CS5 format.

Answer: C is incorrect. If you Choose File >New > Book, the New Book dialog box will open.

[Latest 9A0-142 Dumps](#)

[9A0-142 VCE Dumps](#)

[9A0-142 Study Guide](#)