



9A0-142^{Q&As}

Adobe InDesign CS5 ACE Exam

Pass Adobe 9A0-142 Exam with 100% Guarantee

Free Download Real Questions & Answers **PDF** and **VCE** file from:

<https://www.passapply.com/9a0-142.html>

100% Passing Guarantee
100% Money Back Assurance

Following Questions and Answers are all new published by Adobe
Official Exam Center

-  **Instant Download** After Purchase
-  **100% Money Back** Guarantee
-  **365 Days** Free Update
-  **800,000+** Satisfied Customers





QUESTION 1

Which of the following tools can be used to create lines and shapes? Each correct answer represents a complete solution. Choose all that apply.

- A. Rectangle frame tool
- B. Pen tool
- C. Pencil tool
- D. Polygon frame tool

Correct Answer: BC

Following are the various objects that can be created with InDesign's object-creation tools.

1. Straight lines created by using the Line tool
 2. Lines and shapes created by using the Pen tool or the Pencil tool
 3. Basic shapes created by using Ellipse, Rectangle, and Polygon
 4. Basic frames created by using Ellipse Frame, Rectangle Frame, and Polygon Frame
-

QUESTION 2

You have created a table in the InDesign. You see that your cursor position is at the top-left corner of the table. What does this mean?

- A. It means you can click to select the column.
- B. It means you can drag to resize the column containing the cell.
- C. It means you can click to select the table.
- D. It means you can click to select the row.

Correct Answer: C

If your cursor position is at the top-left corner of the table it means you can click to select the table. Cursor changes its shape when positioned on the cell, row, column, and table boundaries. The following table explains the different positions of a cursor and the actions that can be taken at those positions of the cursor.

Cursor position	Action that can be taken
Above the top-left corner of the table	Click to select the table
Above the left edge of a row	Click to select the row
Above the top of a column	Click to select the column
Above the right or left edge of a cell	Drag to resize the column containing the cell
Above the top or bottom of a cell	Drag to resize the row containing the cell

QUESTION 3

Andrew has created a document in InDesign CS5. He created some URL hyperlinks in his document, but when he exported his document into PDF, he found that the hyperlinks were not working.

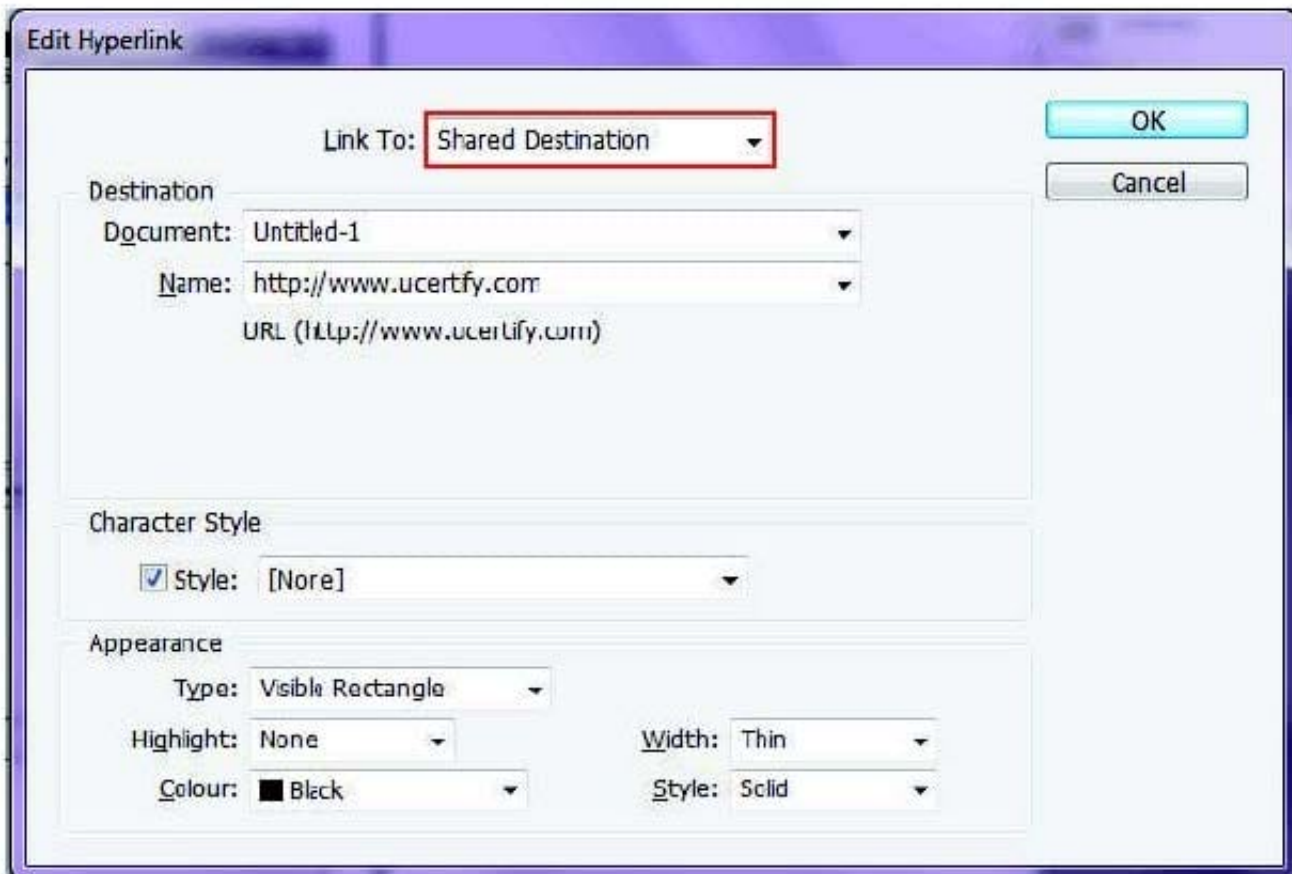


What will Andrew do to correct the problem?

- A. Double-click the hyperlink in the Hyperlinks panel > choose the URL from the Link To menu > deselect Shared Hyperlink Destination > click OK.
- B. Choose New Hyperlink in the Hyperlinks panel menu > choose the URL from the Link To menu > specify appearance options > click OK.
- C. Double-click the hyperlink in the Hyperlinks panel > choose the URL from the Link To menu > deselect the File > click OK.
- D. Double-click the hyperlink in the Hyperlinks panel > choose the URL from the Link To menu > deselect URL > click OK.

Correct Answer: A

If a URL hyperlink is not working in an exported PDF, there may be a problem with the hyperlink being a Shared Destination. Double-click the hyperlink in the Hyperlinks panel, choose the URL from the Link To menu, deselect Shared Hyperlink Destination, and click OK as shown in the following diagram.



QUESTION 4

Which of the following are the various web-oriented bitmap formats? Each correct answer represents a complete solution. Choose all that apply.



- A. CNG
- B. JPEG
- C. GIF
- D. PNG

Correct Answer: BCD

Following are the various Web-oriented bitmap formats.

- 1.GIF or Graphics Interchange Format
- 2.JPEG or Joint Photographic Experts Group
- 3.PNG or Portable Network Graphics

QUESTION 5

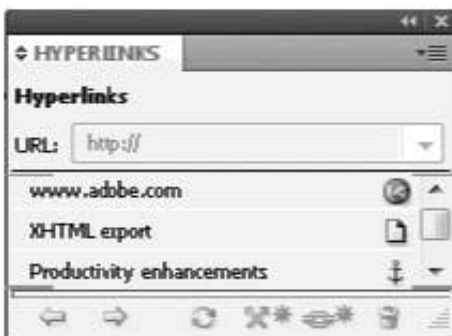
Adam works as a Web developer for company Inc. He has created a Web page using InDesign CS5 with an extensive amount of information. He wants to use links for the convenience of the users of his Website so that the users can directly get to a particular section on the current Web page.

Which of the following panels will Adam use to accomplish this task?

- A. Links panel
- B. Preflight panel
- C. Hyperlink panel
- D. Pages panel

Correct Answer: C

The Hyperlinks panel is a feature of InDesign CS5 which is used to create hyperlinks in a document so that when a user exports to Adobe PDF or SWF in InDesign, a viewer can click a link to jump to other locations in the same document, to other documents, or to websites. To open the Hyperlinks panel in InDesign CS5, use one of the following steps: Choose Window > Interactive > Hyperlinks. Choose Window > Type and Tables > Cross-References.



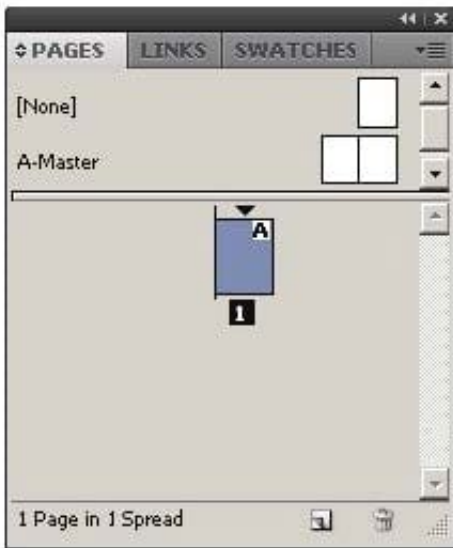
Answer: A is incorrect. The Links panel is a feature of InDesign where all the files are listed and placed in a document.



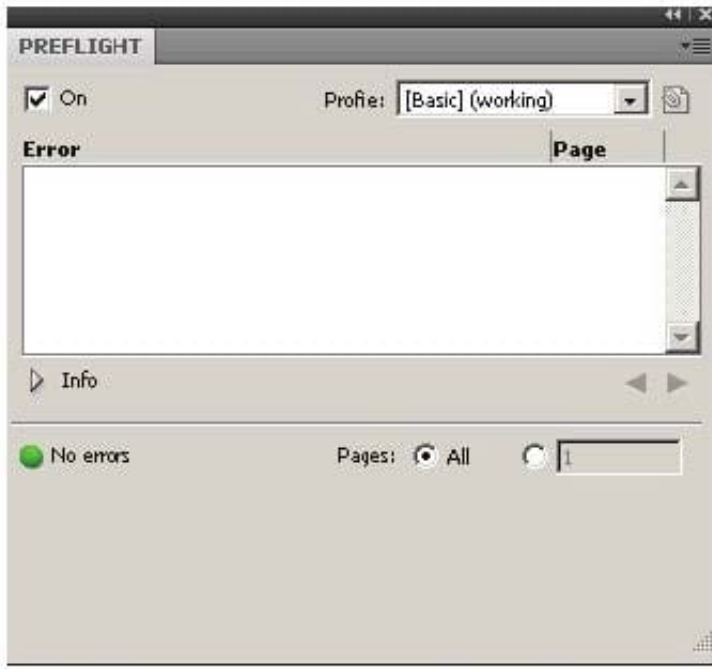
These include both local (on disk) files and assets that are managed on a server. However, the files that are pasted from a website in Internet Explorer are not displayed in this panel. The Links panel is shown in the image below:



Answer: B is incorrect. The Preflight panel is a feature of InDesign CS5 that warns of the problems that could prevent a document or book from printing or outputting as expected while a document is being edited. These problems include missing files or fonts, low-resolution images, overset text, and a number of other conditions.



The preflight settings can be configured to define which conditions are detected. These preflight settings are stored in preflight profiles for easy reuse. To open the Preflight panel, choose Window > Output > Preflight, and double-click the Preflight icon at the bottom of the document window. The Preflight icon is green if no errors are detected or red if errors are detected. The Preflight panel is shown in the image below.



[9A0-142 PDF Dumps](#)

[9A0-142 VCE Dumps](#)

[9A0-142 Brindumps](#)