



98-365^{Q&As}

Windows Server Administration Fundamentals

Pass Microsoft 98-365 Exam with 100% Guarantee

Free Download Real Questions & Answers **PDF** and **VCE** file from:

<https://www.passapply.com/98-365.html>

100% Passing Guarantee
100% Money Back Assurance

Following Questions and Answers are all new published by Microsoft
Official Exam Center

- ⚙ **Instant Download** After Purchase
- ⚙ **100% Money Back** Guarantee
- ⚙ **365 Days** Free Update
- ⚙ **800,000+** Satisfied Customers





QUESTION 1

Which of the following tools comprehensively assesses, deploys, and updates servers, client computers, and devices across the physical, virtual, distributed, and mobile environments?

- A. SCCM
- B. DISM
- C. SCOM
- D. EMS

Correct Answer: A

System Center Configuration Manager (SCCM), formerly Systems Management Server (SMS), is a systems management software product by Microsoft for managing large groups of Windows- based computer systems. Configuration Manager provides remote control, patch management, software distribution, operating system deployment, network access protection, and hardware and software inventory. SCCM comprehensively assesses, deploys, and updates servers, client computers, and devices across the physical, virtual, distributed, and mobile environments.

Incorrect Answers:

B: DISM stands for Deployment Image Servicing and Management. DISM is a command-line tool used to service Windows images offline before deployment. This tool is also used to install, uninstall, configure, and update Windows features, packages, drivers, and international settings. DISM is also distributed in the Windows OEM Preinstallation Kit and the Windows Automated Installation Kit (Windows AIK). It has replaced several Windows OPK tools, including PEimg, Intlcfg, and Package Manager.

C: System Center Operations Manager (SCOM) is a tool that offers service- oriented monitoring that enables administrators to monitor information technology services, scale monitoring across large organizations, and use Microsoft application and operating system knowledge to resolve operational problems. It provides an easy-to-use monitoring environment that monitors a large number of servers, applications, and clients to provide a comprehensive view of the health of an organization's IT environments.

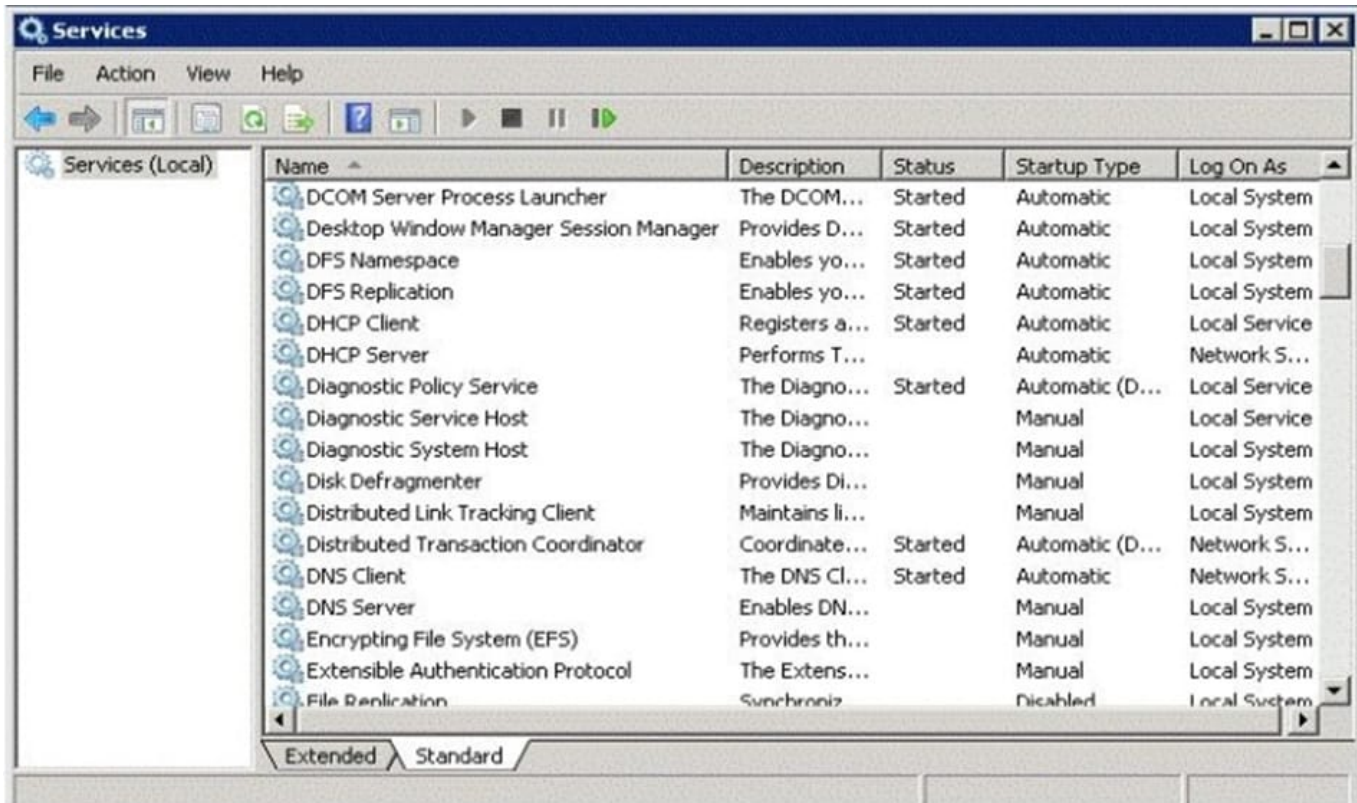
D: Emergency Management Services (EMS) is a Windows Server 2016 tool that allows a server to be controlled when it is in minimally functional state. It allows administrators to take control of the server by connecting through a serial port using an application such as Telnet. EMS also enables administrators to perform all normal server management tasks through the command line. EMS is a helpful tool in case of emergency when other methods of administration are not available. Most organizations use EMS to manage a server that is not responding to normal management technologies.

QUESTION 2

You restart the Windows Server 2016 server for your computer lab.

After the restart, a workstation cannot connect to any local network resource. Other workstations in the lab can connect to local network resources, but cannot browse the Internet.

The Services console on the server is shown in the following image:



Use the drop-down menus to select the answer choice that completes each statement. Each correct selection is worth one point.

Hot Area:

Answer Area

Changing the status of the DHCP Server service to **[answer choice]** allows the users to receive working IP addresses.

▼

Resume

Automatic

Started

Setting the DNS Server service start up type to **[answer choice]** restores name resolution services when the server is rebooted.

▼

Manual

Automatic

Started

Correct Answer:

Answer Area

Changing the status of the DHCP Server service to **[answer choice]** allows the users to receive working IP addresses.

▼

Resume

Automatic

Started

Setting the DNS Server service start up type to **[answer choice]** restores name resolution services when the server is rebooted.

▼

Manual

Automatic

Started



QUESTION 3

Which type of IIS authentication sends the username and password in clear text?

- A. anonymous
- B. ASP.NET Impersonation
- C. Basic Authentication
- D. Windows Authentication

Correct Answer: C

Basic Authentication requires that users provide a valid username and password to gain access to content. Because basic authentication transmits passwords across the network in clear text, you should use it with a digital certificate to encrypt usernames and passwords being sent over the network.

QUESTION 4

What program should you run if you decide to clone a hard drive of Windows Server 2016?

- A. Sysinfo
- B. Sysconf
- C. Sysprep
- D. Format

Correct Answer: C

If you create a cloned copy of Windows and apply it to multiple computers, each copy cloned to a target computer using the same image has the same parameters, including computer name and security identifier (SID). To overcome this problem, run the system preparation tool (sysprep), which removes the security identifiers and all other user-specific or computer-specific information from the computer before you run the disk-cloning software to make the cloned disk image.

QUESTION 5

By default, what port does SMTP use?

- A. 80
- B. 23
- C. 25
- D. 21

Correct Answer: C



SMTP uses TCP port 25.

[Latest 98-365 Dumps](#)

[98-365 PDF Dumps](#)

[98-365 Study Guide](#)