



98-365^{Q&As}

Windows Server Administration Fundamentals

Pass Microsoft 98-365 Exam with 100% Guarantee

Free Download Real Questions & Answers **PDF** and **VCE** file from:

<https://www.passapply.com/98-365.html>

100% Passing Guarantee
100% Money Back Assurance

Following Questions and Answers are all new published by Microsoft
Official Exam Center

-  **Instant Download** After Purchase
-  **100% Money Back** Guarantee
-  **365 Days** Free Update
-  **800,000+** Satisfied Customers



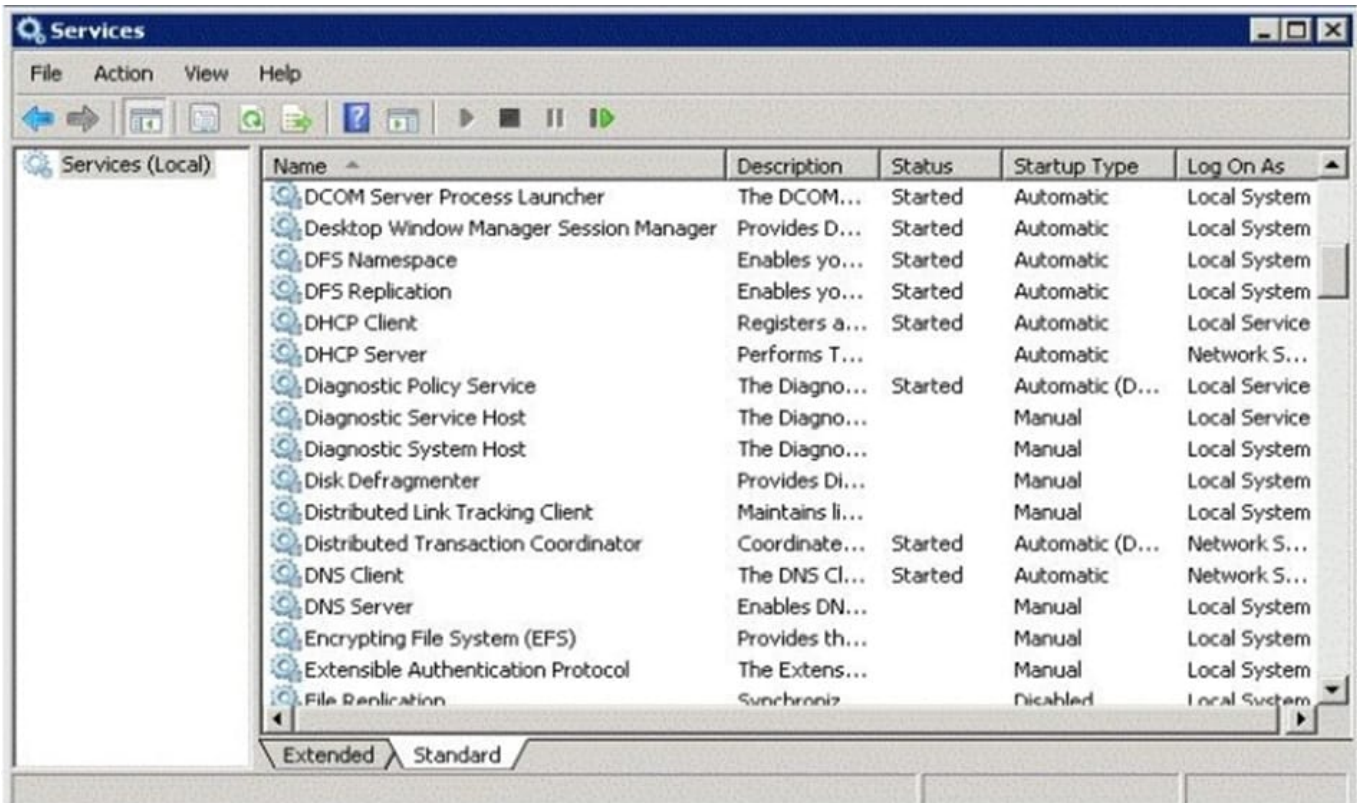


QUESTION 1

HOTSPOT

You restart the Windows Server 2016 server for your computer lab.

After the restart, a workstation cannot connect to any local network resource. Other workstations in the lab can connect to local network resources, but cannot browse the Internet.



The Services console on the server is shown in the following image:

Use the drop-down menus to select the answer choice that completes each statement. Each correct selection is worth one point.

Hot Area:

Answer Area

Changing the status of the DHCP Server service to **[answer choice]** allows the users to receive working IP addresses.

▼
Resume
Automatic
Started

Setting the DNS Server service start up type to **[answer choice]** restores name resolution services when the server is rebooted.

▼
Manual
Automatic
Started

Correct Answer:



Answer Area

Changing the status of the DHCP Server service to **[answer choice]** allows the users to receive working IP addresses.

▼
Resume
Automatic
Started

Setting the DNS Server service start up type to **[answer choice]** restores name resolution services when the server is rebooted.

▼
Manual
Automatic
Started

QUESTION 2

What Windows server attached to a domain is not a domain controller?

- A. member server
- B. bridgehead server
- C. LDAP server
- D. Kerberos server

Correct Answer: A

A server that is not running as a domain controller is known as a member server.

To demote a domain controller to a member server, you rerun the dcpromo program.

QUESTION 3

Which task can you accomplish by using Organizational Units?

- A. Apply shared folder permissions to users
- B. Place different domains in a centralized manageable environment
- C. Create a secondary Active Directory
- D. Logically represent a hierarchical structure of your company

Correct Answer: D

A particularly useful type of directory object contained within domains is the organizational unit. Organizational units are Active Directory containers into which you can place users, groups, computers, and other organizational units. An

organizational unit cannot contain objects from other domains.

An organizational unit is the smallest scope or unit to which you can assign Group Policy settings or delegate administrative authority. Using organizational units, you can create containers within a domain that represent the hierarchical,



logical structures within your organization.

QUESTION 4

For each of the following statements, select Yes if the statement is true. Otherwise, select No. Each correct selection is worth one point.

Hot Area:

Answer Area

	Yes	No
iSCSI storage solutions require a private network to communicate with host machines.	<input type="checkbox"/>	<input type="checkbox"/>
Fibre Channel storage requires ethernet to communicate with host machines.	<input type="checkbox"/>	<input type="checkbox"/>
Direct attached storage solutions require eSATA connections to attach to a host machine.	<input type="checkbox"/>	<input type="checkbox"/>

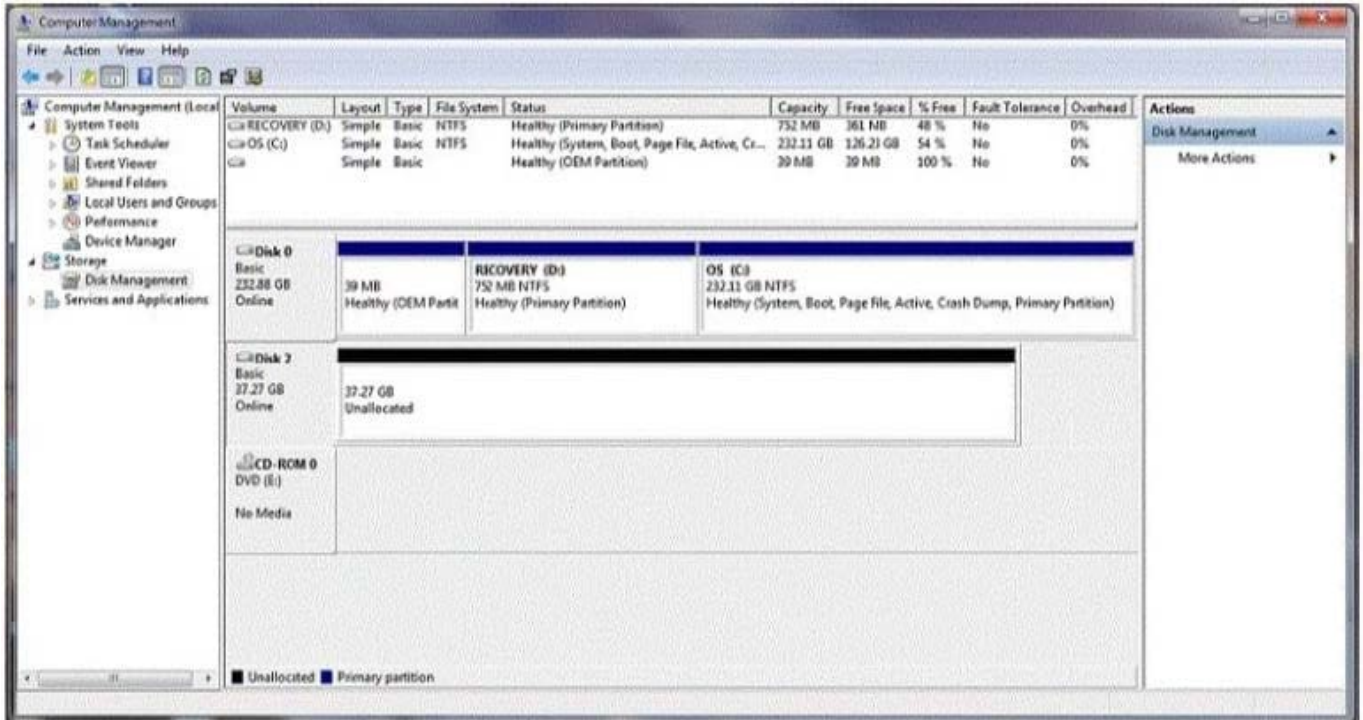
Correct Answer:

Answer Area

	Yes	No
iSCSI storage solutions require a private network to communicate with host machines.	<input type="checkbox"/>	<input checked="" type="checkbox"/>
Fibre Channel storage requires ethernet to communicate with host machines.	<input type="checkbox"/>	<input checked="" type="checkbox"/>
Direct attached storage solutions require eSATA connections to attach to a host machine.	<input type="checkbox"/>	<input checked="" type="checkbox"/>

You buy a new USB hard drive for your server. After connecting the drive, you need to make this drive available to Windows.

In Computer Management Disk Management you see the drive, but it is not visible in Explorer's Computer view, as shown in the following image:



QUESTION 5

What system is used to translate www.microsoft.com to an IP address?

- A. DNS
- B. WINS
- C. DHCP
- D. ARP

Correct Answer: A

Domain Name System (DNS) is a hierarchical client/server-based distributed database management system that translates domain/hosts names to IP addresses. Your organization most likely has one or more DNS servers that provide name resolution for your company.

[Latest 98-365 Dumps](#)

[98-365 Practice Test](#)

[98-365 Exam Questions](#)