



830-01^{Q&As}

RCPE Certified Professional WAN Optimization

Pass Riverbed 830-01 Exam with 100% Guarantee

Free Download Real Questions & Answers **PDF** and **VCE** file from:

<https://www.passapply.com/830-01.html>

100% Passing Guarantee
100% Money Back Assurance

Following Questions and Answers are all new published by Riverbed
Official Exam Center

-  **Instant Download** After Purchase
-  **100% Money Back** Guarantee
-  **365 Days** Free Update
-  **800,000+** Satisfied Customers





QUESTION 1

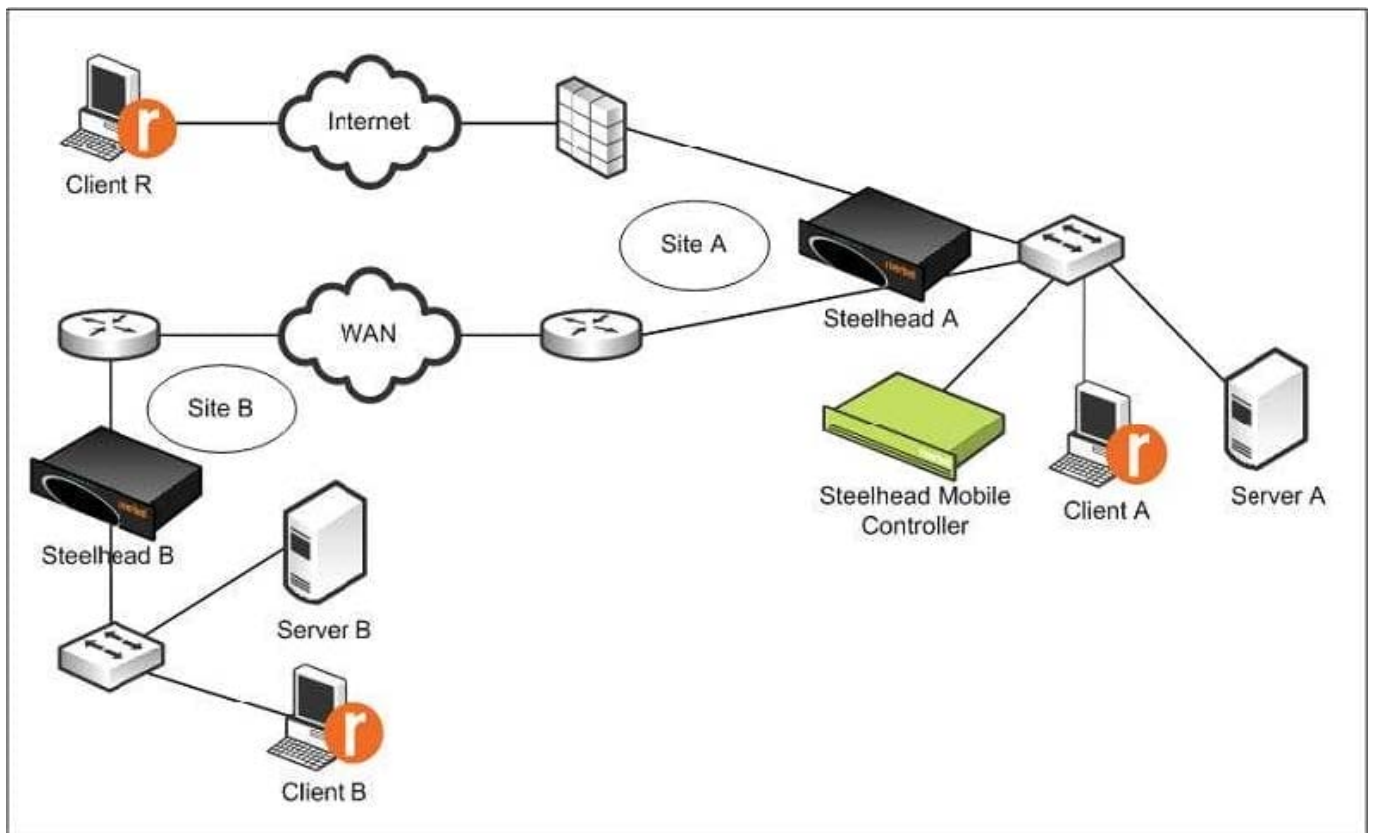
Given four Steelheads are deployed in a WCCP cluster and all Steelheads are optimizing traffic to and from the data center. Steelhead-A fails and only Steelhead-B and Steelhead-C are intercepting new connections while Steelhead-D is NOT optimizing any traffic. What is the likely problem?

- A. The load balancing algorithm on the router is broken
- B. Simplified routing is not enabled
- C. Steelhead-B and Steelhead-C are missing the "in-path neighbor continue-intercept" command
- D. Steelhead-D is missing the "in-path neighbor allow-failure" command
- E. Need to issue the command "in-path accept connections" on Steelhead-D

Correct Answer: D

QUESTION 2

Refer to the exhibit.



What option in the Acceleration policy used on Steelhead Mobile Client A will most likely enhance the users experience connecting to Server B, if Server B is an Exchange 2003 Server?

- A. Enable MAPI NSPI



- B. Increase the datastore size
- C. Enable latency-based location awareness
- D. Enable SSL optimization and import the Exchange certificate for Server B into Steelhead B
- E. Peering rule rejecting optimization with Steelhead A

Correct Answer: C

QUESTION 3

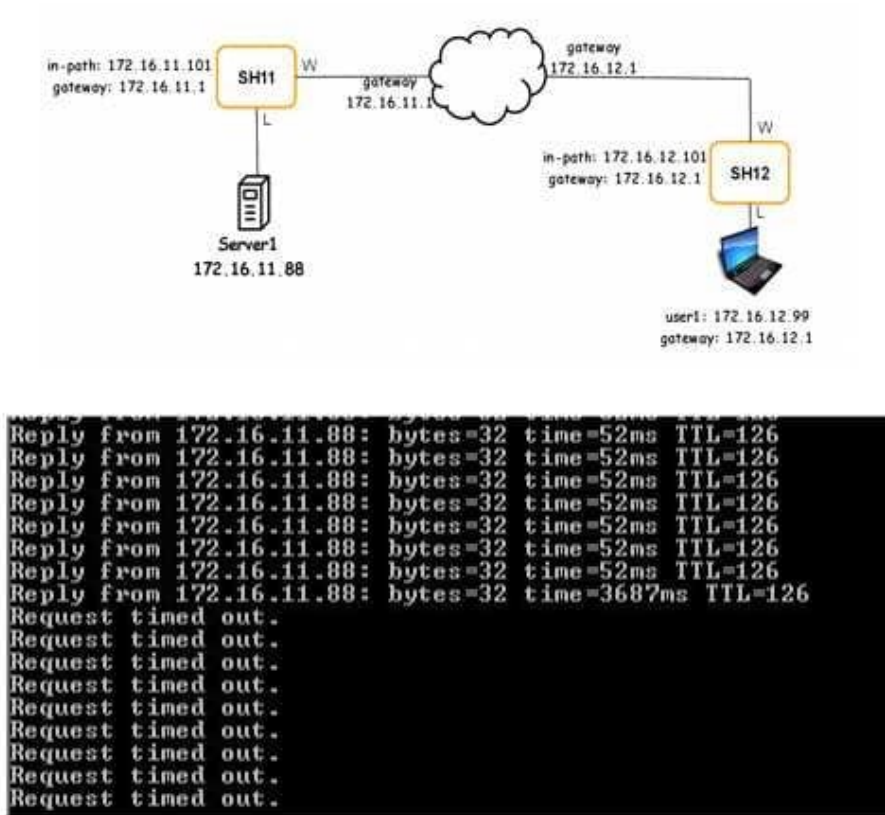
Which command shows the last boot partition and the next boot partition? (Select 2)

- A. show bootvar
- B. show images
- C. show info
- D. show bootpar
- E. show system
- F. show version

Correct Answer: AB

QUESTION 4

-- Exhibit -- Exhibit -Refer to the exhibit. A Steelhead administrator has recently decided to implement QoS on SH12. The WAN link between Branch1 and the Data Center is a T1. After implement QoS, he started seeing problems with traffic to Server1. What could be the problem and how would you fix it? (Select 2)



- A. Problem: Max BW % on the default class. Fix: increase Min BW %
- B. Problem: Max BW % on the default class. Fix: increase Max BW %
- C. Problem: Max BW % on the default class. Fix: disable QOS
- D. Problem: Min BW % on the default class. Fix: increase Min BW %

Correct Answer: BC

QUESTION 5

You are troubleshooting a connection which is being passed-through. An in-path rule to optimize it is present, both SteelHeads are working and not in admission control. You examine the logs and find:

[intercept.WARN] asymmetric routing between 10.11.111.19:33262 and 10.11.25.23:5001 detected (no SYN/ACK)

What is the reason for the asymmetry?



- A. Complete asymmetry
- B. SYN Retransmit
- C. Server-side asymmetry
- D. Client-side asymmetry
- E. Multi-SYN Retransmit

Correct Answer: D

[830-01 PDF Dumps](#)

[830-01 Practice Test](#)

[830-01 Exam Questions](#)