



830-01^{Q&As}

RCPE Certified Professional WAN Optimization

Pass Riverbed 830-01 Exam with 100% Guarantee

Free Download Real Questions & Answers **PDF** and **VCE** file from:

<https://www.passapply.com/830-01.html>

100% Passing Guarantee
100% Money Back Assurance

Following Questions and Answers are all new published by Riverbed
Official Exam Center

- ⚙ **Instant Download** After Purchase
- ⚙ **100% Money Back** Guarantee
- ⚙ **365 Days** Free Update
- ⚙ **800,000+** Satisfied Customers





QUESTION 1

The primary purpose of the Redirect In-path rule is to:

- A. Select which traffic to redirect to Steelhead appliances
- B. Utilize the Interceptor appliance as a backup firewall device
- C. Select which traffic to split to two different interfaces
- D. Select to which Steelhead appliance(s) traffic will be redirected

Correct Answer: A

QUESTION 2

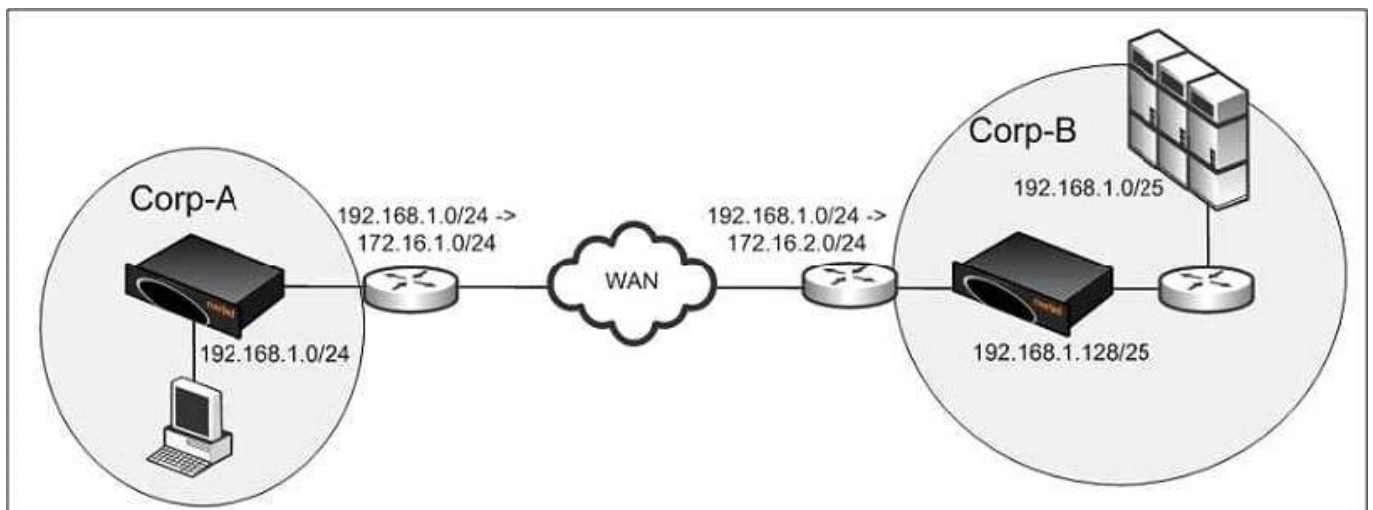
Which of the following control messages are NOT used by WCCP? (Select 2)

- A. PEEK_A_BOO
- B. I_SEE_YOU
- C. REDIRECT_ASSIGN
- D. REMOVAL_QUERY
- E. KEEPALIVE

Correct Answer: AE

QUESTION 3

Refer to the exhibit.





Corp-A and Corp-B have overlapping address space and therefore the network administrator implemented NAT to overcome this. Users from Corp-A NAT to 172.16.1.0/24 and users from Corp-B NAT to 172.16.2.0/24. Users in Corp-A use the destination address of 172.16.2.0/24 to access the resources in Corp-B. The servers in Corp-B use the client IP for authentication. What do you need to do in order to make this deployment work? (Select 2)

- A. Configure Full Transparency
- B. Configure out-of-path
- C. Configure Port Transparency
- D. Configure OOB Transparency
- E. Steelhead appliances cannot be deployed in this network

Correct Answer: AD

QUESTION 4

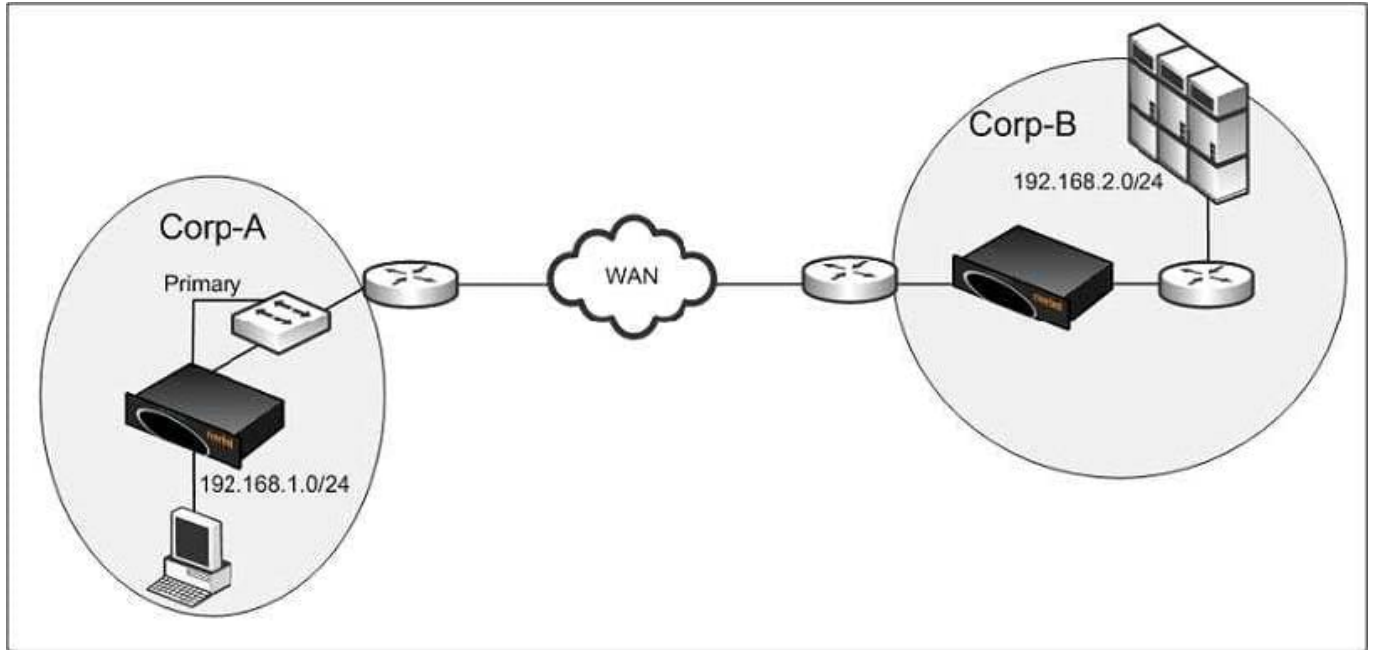
You have outgrown your current Steelhead appliance and want to copy the datastore from your exiting Steelhead 550 appliance to a new 2050 Steelhead appliance. What feature would you use to synchronize the different model Steelhead appliance datastores?

- A. Export/Import operation function
- B. Copy the datastore file system
- C. "datastore send" command
- D. Copying the configuration files
- E. This cannot be done on Steelhead appliances

Correct Answer: E

QUESTION 5

Refer to the exhibit.



You configured CIFS prepopulation at Corp-A but it is not working. What is likely the cause of the issue?

- A. CIFS prepopulation requires WCCP
- B. Primary interface needs to be on a different subnet
- C. CIFS prepopulation requires a fixed-target rule
- D. The Primary interface needs to be on the LAN side of the Steelhead appliance
- E. CIFS prepopulation requires SMBv2

Correct Answer: D

[830-01 PDF Dumps](#)

[830-01 Practice Test](#)

[830-01 Exam Questions](#)