



830-01^{Q&As}

RCPE Certified Professional WAN Optimization

Pass Riverbed 830-01 Exam with 100% Guarantee

Free Download Real Questions & Answers **PDF** and **VCE** file from:

<https://www.passapply.com/830-01.html>

100% Passing Guarantee
100% Money Back Assurance

Following Questions and Answers are all new published by Riverbed
Official Exam Center

- ⚙ **Instant Download** After Purchase
- ⚙ **100% Money Back** Guarantee
- ⚙ **365 Days** Free Update
- ⚙ **800,000+** Satisfied Customers





QUESTION 1

Which of the following points on WCCP v2 are correct? (Select 4)

- A. Intercept on outbound interface only
- B. Multicast support
- C. Able to redirect any TCP/UDP traffic
- D. Uses UDP port 2048 for control messages
- E. Multi-router support

Correct Answer: BCDE

QUESTION 2

Connection Pooling works with:

- A. Port and Full Transparency
- B. Correct Addressing and Port Transparency
- C. Correct Addressing only
- D. Correct Addressing, Port and Full Transparency
- E. Full Transparency only

Correct Answer: D

QUESTION 3

When deploying a Virtual Steelhead appliance, how much extra memory should be allocated for the extra VMware overhead?

- A. 3%
- B. 4%
- C. 5%
- D. 10%
- E. 2%

Correct Answer: C



QUESTION 4

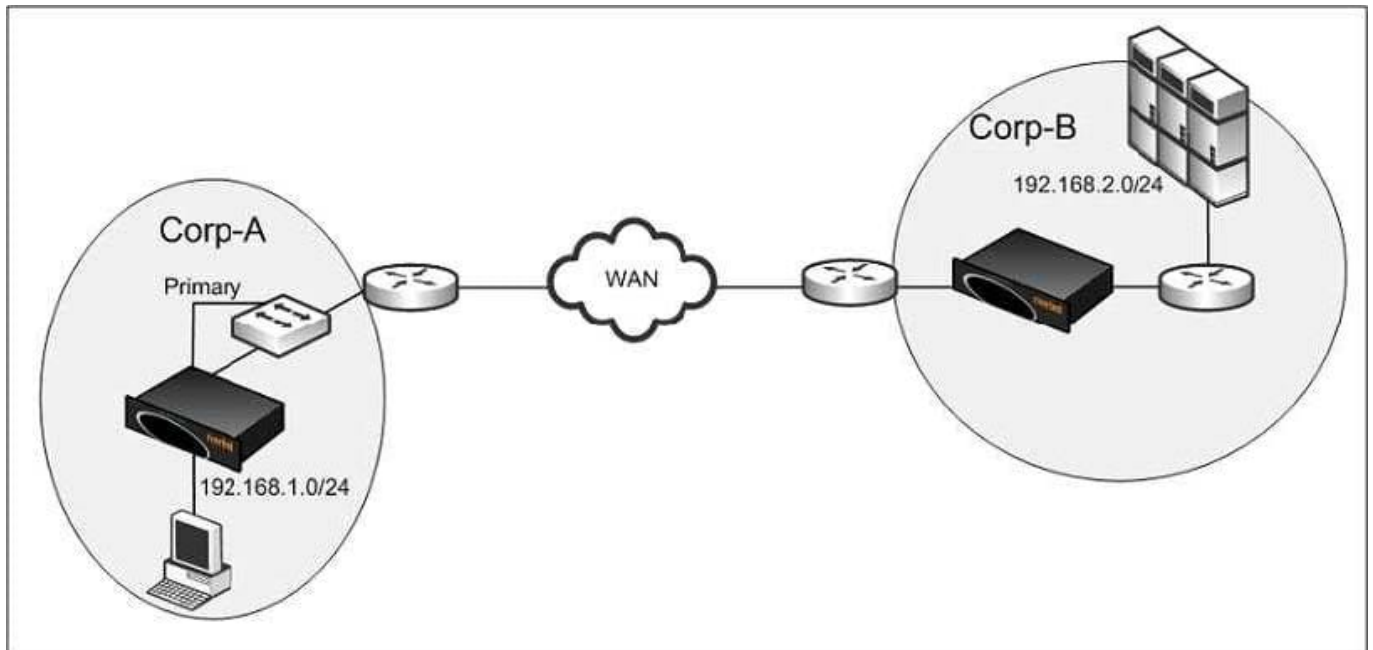
What ports are required for proper operation of the Steelhead Mobile client?

- A. 7800 outbound, 7801 inbound, 7870 outbound
- B. 7800 inbound, 7870 inbound, 7870 outbound
- C. 7800 inbound, 7801 outbound, 7870 outbound
- D. None of the above

Correct Answer: A

QUESTION 5

Refer to the exhibit.



You configured CIFS prepopulation at Corp-A but it is not working. What is likely the cause of the issue?

- A. CIFS prepopulation requires WCCP
- B. Primary interface needs to be on a different subnet
- C. CIFS prepopulation requires a fixed-target rule
- D. The Primary interface needs to be on the LAN side of the Steelhead appliance
- E. CIFS prepopulation requires SMBv2

Correct Answer: D