



74-335^{Q&As}

Network Readiness and Assessment for Lync

Pass Microsoft 74-335 Exam with 100% Guarantee

Free Download Real Questions & Answers **PDF** and **VCE** file from:

<https://www.passapply.com/74-335.html>

100% Passing Guarantee
100% Money Back Assurance

Following Questions and Answers are all new published by Microsoft
Official Exam Center

-  **Instant Download** After Purchase
-  **100% Money Back** Guarantee
-  **365 Days** Free Update
-  **800,000+** Satisfied Customers





QUESTION 1

Your customer's network includes three offices and two data centers that are connected by wide area network (WAN) links. Your customer has documented and modeled Lync usage within the current environment.

You review the customer's model and confirm that it is accurate. You need to recommend the next step in the Lync network readiness assessment.

What should you recommend as the next step?

- A. Implement Quality of Service (QoS).
- B. Perform traffic simulation.
- C. Calculate audio capacity for a public switched telephone network (PSTN).
- D. Calculate bandwidth estimations over the WAN links.

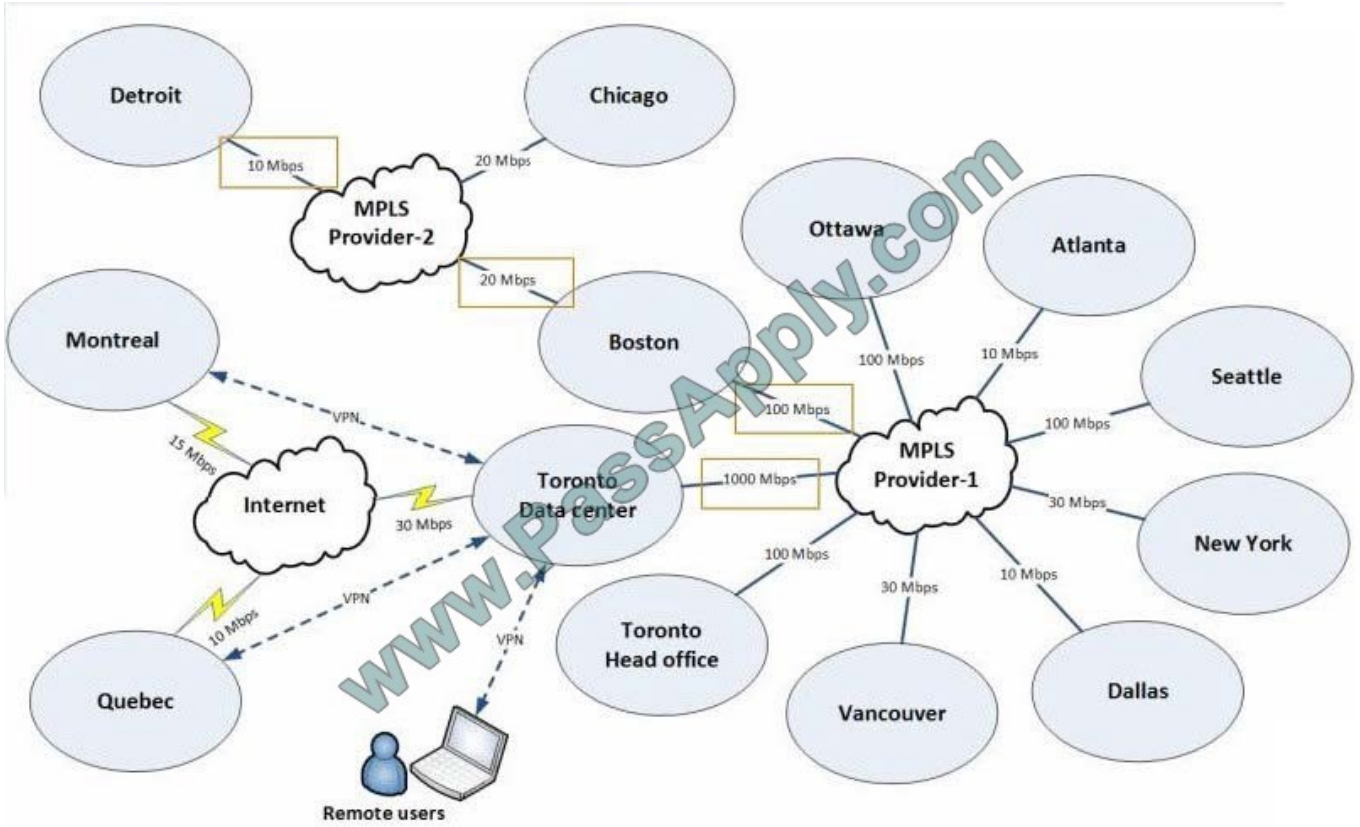
Correct Answer: B

Networking Guide Network Planning, Monitoring, and Troubleshooting with Lync Server

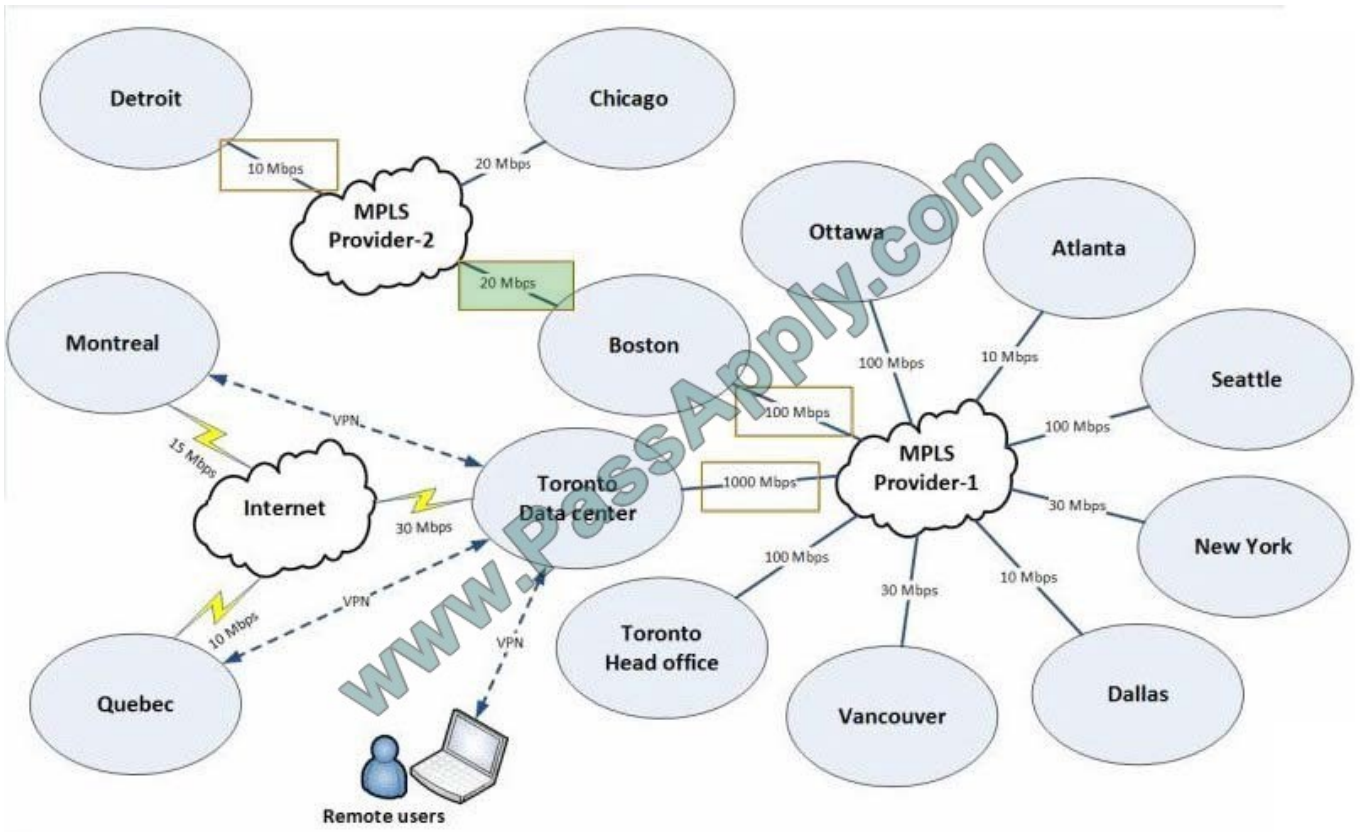
QUESTION 2

You need to identify the wide area network (WAN) link between the Detroit office and the data center that shows unacceptable performance. Which link on the network topology diagram should you choose? (To answer, select the appropriate link in the answer area.)

Hot Area:



Correct Answer:





QUESTION 3

You are developing a design solution to eliminate the possibility of wide area network (WAN) oversubscription by Lync traffic.

You need to assign tasks to each office.

Which tasks should you assign to each office? (To answer, drag the appropriate task or tasks to the correct office or offices in the answer area. Each task may be used once, more than once, or not at all. You may need to drag the split bar

between panels or scroll to view content.)

Select and Place:

Correct Answer:

Note:

From scenario:



* The core portion of the infrastructure is located in the Vancouver data center, although the Seattle data center also has two servers (AD Domain controller, DFS server) to provide redundancy of Active Directory and data services.

* Contoso plans to redesign the existing site-to-site VPN solution between the Vancouver and Seattle offices to implement a robust and reliable WAN solution with end-to-end support of Quality of Service (QoS).

QUESTION 4

Your customer's network includes two offices that are connected by a 100-megabits per second (Mbps) wide area network (WAN) link. Each office has 200 employees. Most employees work remotely and connect to the internal network by

using a virtual private network (VPN). Your customer plans to deploy Lync to support peer-to-peer (P2P) and conference sessions between employees. The customer wants to minimize Lync workload at the existing VPN server appliance.

You prepare modeling of Lync traffic for the customer's network. You need to determine what additional information should be collected and included in the modeling calculation. Which two pieces of information should you collect? (Each correct answer presents a complete solution. Choose two.)

- A. codecs to be used by Lync clients
- B. encryption protocols used to protect VPN communications
- C. proposed location of the Lync Edge server
- D. historic workload of the VPN appliance

Correct Answer: AD

Note:

* Bandwidth figures include the protocol overheads for IP, UDP, RTP, and SRTP. This is why the Microsoft bandwidth figures for standard codecs are different from those quoted by other VoIP suppliers, who only state the raw codec figure, and not the entire packet overhead. Networking Guide Network Planning, Monitoring, and Troubleshooting with Lync Server

QUESTION 5

You need to modify the relevant portion of the Persona configuration in the Lync Bandwidth Calculator to estimate the planned volume of Lync traffic for the Contoso office in Vancouver. Which options should you select? (To answer, select the appropriate value in each drop-down menu in the Lync Bandwidth Calculator.)

Hot Area:



Return to Start

Client and Deployment Options

Client	Deployment
Lync 2010	Onpremise
Lync 2013	Online-Shared
Lync 2013 VDI	Online-Dedicated
Lync 2013 Web Access	Online-Hybrid-Voice
Lync 2010 Mobile	
Lync 2013 Mobile	
Lync Room System	
Lync Phone Edition	

Note:
There are up to 10 persona definitions allowed.
Use as many as you need and feel free to rename them.

Concurrency Example
Usage Models use Max Concurrency at Peak Time per Modality. For example, a user profile with 1000 users that uses a medium PSTN Usage Model (10% concurrency) would have 100 users making PSTN calls at the busiest time of the day.

Usage Models Definitions (Max Concurrency at Peak Time per Modality)

usage	none	low	medium	high	custom 1
IM/Presence	0%	65.00%	80.00%	90.00%	85.00%
P2P audio	0%	0.50%	1.50%	2.50%	1.00%
P2P video	0%	0.10%	0.30%	0.50%	1.00%
conf audio	0%	1.00%	3.00%	5.00%	1.00%
conf video	0%	0.10%	0.50%	1.00%	1.00%
desktop share	0%	0.50%	1.00%	1.50%	1.00%
PSTN audio	0%	5.00%	10.00%	15.00%	25.00%

Persona Definitions

	Client	Deployment	IM/Presence	P2P audio	P2P video	conf audio	conf video	desktop share	PSTN audio	Lync 2010 RTV_Type	Remote Users	Lync 2013 Stereo Audio	Lync 2013 Video Quality
Desktop Information Worker	Lync 2013	Onpremise	high	medium	medium	medium	medium	medium	medium	CIF	10%	0%	Best
Mobile Information Worker	Lync 2013	Onpremise	medium	medium	medium	medium	medium	medium	medium	CIF	90%	0%	Best
Administrators	Lync 2010	Onpremise	medium	medium	medium	medium	medium	medium	medium	CIF	10%	0%	Best
Small Branch - Information Worker	Lync 2010	Onpremise	medium	medium	none	medium	medium	none	medium	CIF	10%	0%	Best
Vancouver Employees	Lync 2013	Onpremise	medium	medium	medium	medium	medium	none	medium	CIF	10%	0%	Best

Correct Answer:

Return to Start

Client and Deployment Options

Client	Deployment
Lync 2010	Onpremise
Lync 2013	Online-Shared
Lync 2013 VDI	Online-Dedicated
Lync 2013 Web Access	Online-Hybrid-Voice
Lync 2010 Mobile	
Lync 2013 Mobile	
Lync Room System	
Lync Phone Edition	

Note:
There are up to 10 persona definitions allowed.
Use as many as you need and feel free to rename them.

Concurrency Example
Usage Models use Max Concurrency at Peak Time per Modality. For example, a user profile with 1000 users that uses a medium PSTN Usage Model (10% concurrency) would have 100 users making PSTN calls at the busiest time of the day.

Usage Models Definitions (Max Concurrency at Peak Time per Modality)

usage	none	low	medium	high	custom 1
IM/Presence	0%	65.00%	80.00%	90.00%	85.00%
P2P audio	0%	0.50%	1.50%	2.50%	1.00%
P2P video	0%	0.10%	0.30%	0.50%	1.00%
conf audio	0%	1.00%	3.00%	5.00%	1.00%
conf video	0%	0.10%	0.50%	1.00%	1.00%
desktop share	0%	0.50%	1.00%	1.50%	1.00%
PSTN audio	0%	5.00%	10.00%	15.00%	25.00%

Persona Definitions

	Client	Deployment	IM/Presence	P2P audio	P2P video	conf audio	conf video	desktop share	PSTN audio	Lync 2010 RTV_Type	Remote Users	Lync 2013 Stereo Audio	Lync 2013 Video Quality
Desktop Information Worker	Lync 2013	Onpremise	high	medium	medium	medium	medium	medium	medium	CIF	10%	0%	Best
Mobile Information Worker	Lync 2013	Onpremise	medium	medium	medium	medium	medium	medium	medium	CIF	90%	0%	Best
Administrators	Lync 2010	Onpremise	medium	medium	medium	medium	medium	medium	medium	CIF	10%	0%	Best
Small Branch - Information Worker	Lync 2010	Onpremise	medium	medium	none	medium	medium	none	medium	CIF	10%	0%	Best
Vancouver Employees	Lync 2013	Onpremise	medium	medium	medium	medium	medium	none	medium	CIF	10%	0%	Best

[74-335 Practice Test](#)

[74-335 Study Guide](#)

[74-335 Exam Questions](#)



To Read the [Whole Q&As](#), please purchase the [Complete Version](#) from [Our website](#).

Try our product !

100% Guaranteed Success
100% Money Back Guarantee
365 Days Free Update
Instant Download After Purchase
24x7 Customer Support
Average 99.9% Success Rate
More than 800,000 Satisfied Customers Worldwide
Multi-Platform capabilities - [Windows](#), [Mac](#), [Android](#), [iPhone](#), [iPod](#), [iPad](#), [Kindle](#)

We provide exam PDF and VCE of Cisco, Microsoft, IBM, CompTIA, Oracle and other IT Certifications. You can view Vendor list of All Certification Exams offered:

<https://www.passapply.com/allproducts>

Need Help

Please provide as much detail as possible so we can best assist you.
To update a previously submitted ticket:



 <p>One Year Free Update Free update is available within One Year after your purchase. After One Year, you will get 50% discounts for updating. And we are proud to boast a 24/7 efficient Customer Support system via Email.</p>	 <p>Money Back Guarantee To ensure that you are spending on quality products, we provide 100% money back guarantee for 30 days from the date of purchase.</p>	 <p>Security & Privacy We respect customer privacy. We use McAfee's security service to provide you with utmost security for your personal information & peace of mind.</p>
---	---	--

Any charges made through this site will appear as Global Simulators Limited.
All trademarks are the property of their respective owners.
Copyright © passapply, All Rights Reserved.