



70-981^{Q&As}

Recertification for MCSE: Private Cloud

Pass Microsoft 70-981 Exam with 100% Guarantee

Free Download Real Questions & Answers **PDF** and **VCE** file from:

<https://www.passapply.com/70-981.html>

100% Passing Guarantee
100% Money Back Assurance

Following Questions and Answers are all new published by Microsoft
Official Exam Center

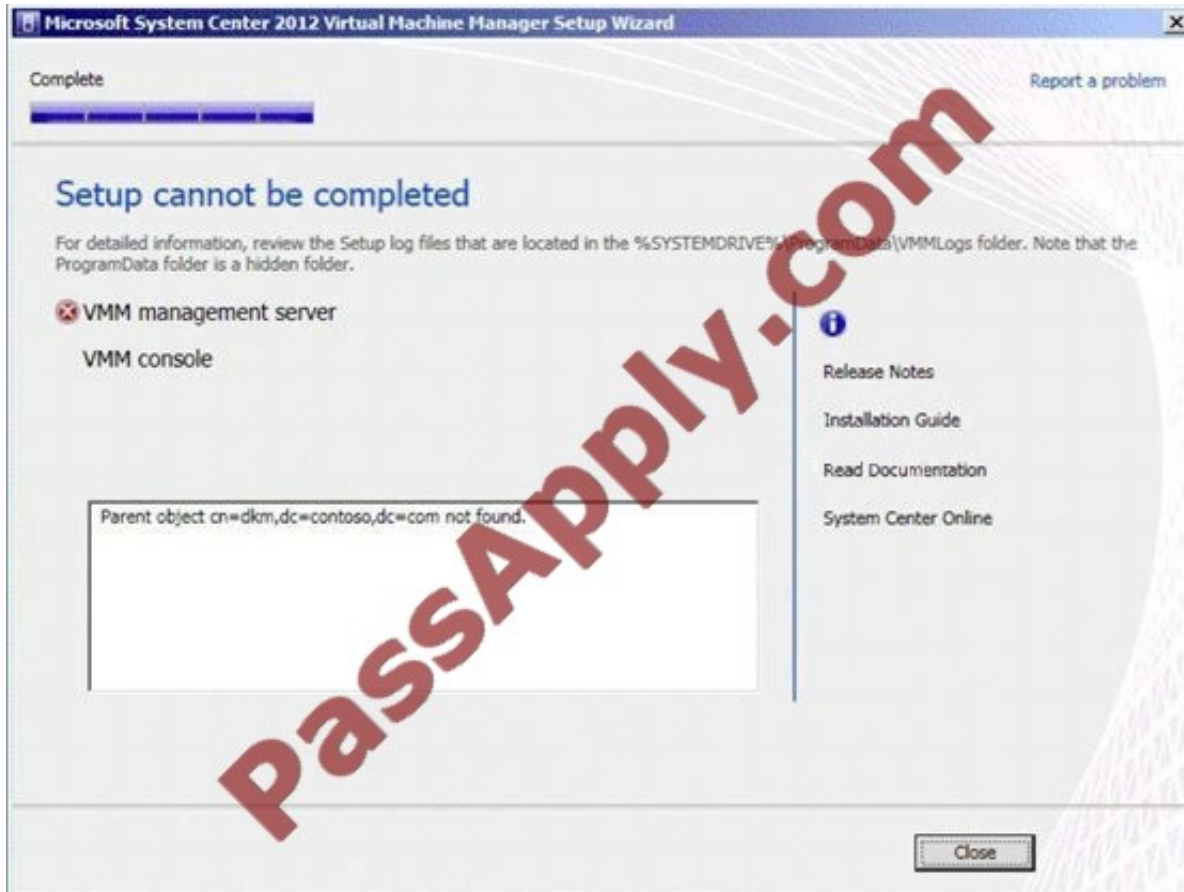
-  **Instant Download** After Purchase
-  **100% Money Back** Guarantee
-  **365 Days** Free Update
-  **800,000+** Satisfied Customers





QUESTION 1

Your network contains an Active Directory domain named contoso.com. You plan to install System Center 2012 Virtual Machine Manager (VMM) on server named Server1. During the installation, you receive the error message shown in the exhibit. (Click the Exhibit button.)



You need to install VMM 2012 on Server1.

What should you instruct a domain administrator to do first?

- A. Create a service location (SRV) record named `_tcp.server1.dkm.contoso.com` and a host (A) record named DKM.
- B. Create a service connection point (SCP) object named `DKM.TCP.contoso.com`, and then modify the permissions of the SCP object.
- C. Create a container named DKM, and then modify the permissions of the container.
- D. Create a security group named DKM, and then modify the permissions of the group.

Correct Answer: C

<http://blogs.technet.com/b/scvmm/archive/2012/06/18/kb-system-center-2012-virtual-machine-manager-setup-fails-to-create-child-objects-for-dkm.aspx> <http://www.aidanfinn.com/?p=11446>



QUESTION 2

You have a private cloud that is managed by System Center 2012. Your network contains two servers. The servers are configured as shown in the following table:

Server name	Server configuration
VMM1	1 GB of RAM x64 architecture Windows Server 2008 Service Pack 2 (SP2) System Center Virtual Machine Manager (VMM) 2008 R2 Service Pack 1 (SP1)
SQL1	1 GB of RAM x64 architecture Windows Server 2008 Service Pack 2 (SP2) Microsoft SQL Server 2008 Express

Server1 stores its VMM databases on Server2.

You need to upgrade Server1 to VMM 2012.

What should you install before you upgrade VMM1? To answer, drag the appropriate component or components to the correct location or locations in the answer area. (Each component may be used

once, more than once, or Server name Server role not at all.)

Select and Place:



Components	Answer Area
<p>More memory</p>	<p>VMM1</p>  <p>Actions</p> <p>Component</p> <p>Component</p> <p>Component</p>
<p>SQL Server 2008 RTM Enterprise</p>	
<p>SQL Server 2008 R2 Standard</p>	
<p>Windows Automated Installation Kit (Windows AIK) 2.0</p>	
<p>Virtual Machine Manager Self-Service Portal (VMMSSP) 2.0</p>	
<p>Windows Server 2008 R2</p>	<p>SQL 1</p>  <p>Component</p>

Correct Answer:



Components	Answer Area
<div style="border: 1px solid gray; padding: 5px; margin-bottom: 5px;">SQL Server 2008 RTM Enterprise</div> <div style="border: 1px solid gray; padding: 5px; margin-bottom: 5px;">Virtual Machine Manager Self-Service Portal (VMMSSP) 2.0</div>	<div style="display: flex; justify-content: space-between;"><div style="width: 45%;"><p>VMM1</p><p>SQL 1</p></div><div style="width: 50%;"><p>Actions</p><div style="border: 1px solid gray; padding: 5px; margin-bottom: 5px;">More memory</div><div style="border: 1px solid gray; padding: 5px; margin-bottom: 5px;">Windows Automated Installation Kit (Windows AIK) 2.0</div><div style="border: 1px solid gray; padding: 5px; margin-bottom: 5px;">Windows Server 2008 R2</div><div style="border: 1px solid gray; padding: 5px; margin-top: 20px;">SQL Server 2008 R2 Standard</div></div></div>

QUESTION 3

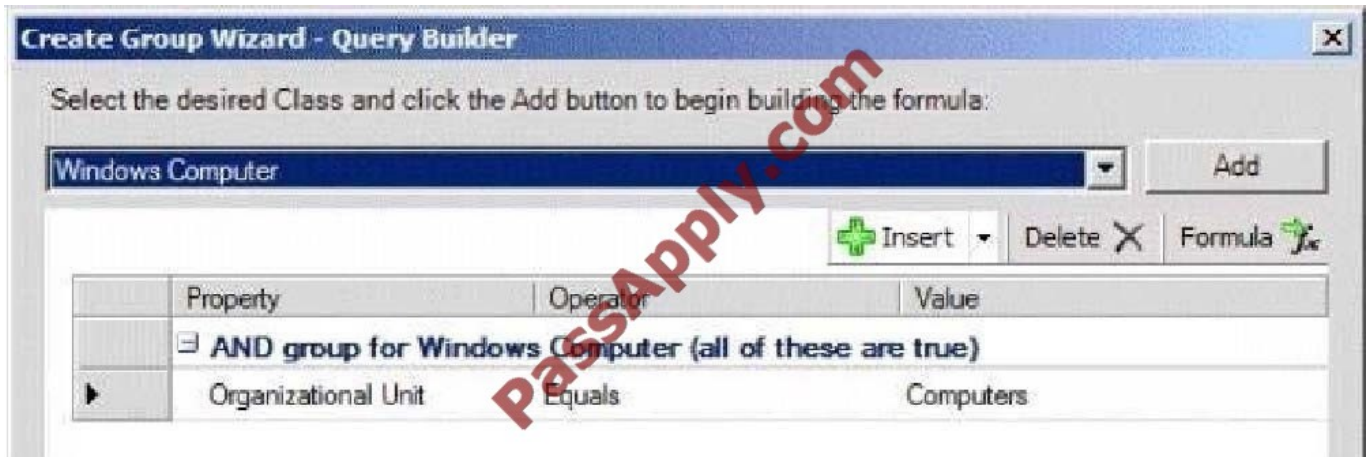
Your company has a private cloud that is managed by using a System Center 2012 Operations Manager infrastructure.

The network contains an Active Directory forest named adatum.com.

Operations Manager monitors a server named Operations1.

Operations1 has a computer account in an organizational unit (OU) name ServerOU1.

You create a group named GP1 as shown in the exhibit. (Click the Exhibit button.)



You create a rule named OMRule1 that generates an alert when an error is added to the Application log. You target OMRule1 to GP1.

You discover that alerts fail to be generated when errors are added to the Application log on Operations1. You need to ensure that an alert is generated when an error is added to the Application log on Operations1.

What should you modify?

- A. the target of OMRule1
- B. the dynamic membership of GP1
- C. the category of OMRule1
- D. the explicit membership of GP1

Correct Answer: B

How does a rule get to an agent?

For any particular rule/monitor, OpsMgr will enumerate all instances of the target class and apply the rule to each.

If there are no instances of the target class on a particular agent, then the rule will do nothing.

It's that simple.

If I can't target groups, why are they listed when I select a target for a rule? Groups are classes just like any other.

They're singleton classes where the class and the instance are one and the same, but they are classes nonetheless which is why they show up in the list with all other classes.

There are really very few circumstances where you will target a rule at a group though.

What if I do target a group?

You can apply a rule/monitor directly to a group, but it will execute against the group object itself.

OpsMgr will not enumerate members of the group and apply the rule to each. Any rules targeted at groups will actually operate on the Root Management Server since groups have no host and unhosted objects are managed by the RMS.

How do I target some group of objects then?



To the specific question of how to get a particular rule/monitor to a subset of components, you have two basic options.

Let's say for example, you have a particular subset of web sites that you need a particular rule to apply.

You could target that rule at the IIS 2003 Web Site class for example, but that would apply the rule to all instances of that class.

It would probably apply to sites that you didn't want. Option 1 would be to create a new class and target the rule at the class. In the case of an IIS site, this would mean that you would need to go to the Authoring Console or raw XML and

create a new class and discovery. That's a more advanced solution that most customers will do and probably overkill anyway. Option 2 is to create a rule target at the whole class and disable it. Create a group with the sites you want and

create an override for that group to enable your rule.

This might sound like a workaround, but it's a completely valid solution. How do I know if I'm selecting the right target? The easiest method to validate you are using a target that actually has instances is to use the Discovered

Inventory view in the Operations Console prior to creating your rule/monitor. In the Actions pane is an option called "Change target type..." that will bring up the same Select a Target Type dialog box that you see when you select the target for

a rule/monitor. This view will list all instances of the target class you select. You can validate which agents have an instance of that class and how many instances each has.

If there are no instances listed, then the rule isn't going to do anything. If there are instances, then you not only be confident that the rule/monitor will execute on the agent, but you can also view the properties of the instance that will be

accessible to any rules/monitors targeted at it.

<http://blogs.technet.com/b/brianwren/archive/2007/08/22/targeting-rules-and-monitors.aspx> NOTE: The text below was copied from a duplicate question <https://social.technet.microsoft.com/wiki/contents/articles/7205.operations-managerdynamicgroup-examples.aspx>

Operations Manager Dynamic Group Examples

In Operations Manager, groups are logical collections of objects, such as Windows-based computers, hard disks, or instances of Microsoft SQL Server. Groups are populated by explicitly adding objects to the group or dynamically according

to criteria you set.

For more information on the use of groups, see [Creating and Managing Groups in the Operations Guide](#).

This article provides example of group definitions. The examples describe the items to select in the Query Builder and the resulting formula:



Select the desired Class and click the Add button to begin building the formula:

Windows Computer [Add]

[Insert] [Delete] [Formula]

Property	Operator	Value
AND group for Windows Computer (all of these are true)		
Organizational Unit	Equals	Domain Controllers

Dynamic Inclusion Rules (optional)

Use a formula to populate group membership.

[Create/Edit rules...]

Query formula:

(Object is Windows Computer AND (Organizational Unit Equals Domain Controllers) AND True)

QUESTION 4

You are evaluating the deployment of System Center 2012 Service Manager.

You need to recommend which actions must be performed to meet the technical requirements for the Exchange Server servers.

Which four actions should you perform in sequence? (To answer, move the appropriate four actions from the list of actions to the answer area and arrange them in the correct order.)

Select and Place:



Actions	Answer Area
Create a service offering in Service Manager.	
Deploy the Service Manager web content server.	
Deploy the Service Manager SharePoint Web Parts to the Web Part Gallery.	
Add the Service Offering Web Part to a SharePoint webpage.	
Add the Request Offering Web Part to a SharePoint webpage.	

Correct Answer:

Actions	Answer Area
	Deploy the Service Manager web content server.
	Deploy the Service Manager SharePoint Web Parts to the Web Part Gallery.
	Add the Request Offering Web Part to a SharePoint webpage.
Add the Service Offering Web Part to a SharePoint webpage.	Create a service offering in Service Manager.



QUESTION 5

You manage a System Center 2012 R2 Virtual Manager (VMM) deployment that contains the servers configured as shown in the following table.

Name	Configuration
Server1	Service Provider Foundation <
Server2	VMM
Server3	System Center 2012 R2 App Controller

You integrate VMM with Service Provider Foundation and App Controller.

You need to create a tenant self-service user role for the users who connect to VMM by using App Controller.

On which server should you perform each action? To answer, select the appropriate options in the answer area.

Hot Area:

Run the **New-SCSPFTenantUserRole** cmdlet:

Server1	<input checked="" type="checkbox"/>
Server2	<input type="checkbox"/>
Server3	<input type="checkbox"/>

Run the **New-SCUserRole** cmdlet:

Server1	<input checked="" type="checkbox"/>
Server2	<input type="checkbox"/>
Server3	<input type="checkbox"/>

Configure the user role:

Server1	<input checked="" type="checkbox"/>
Server2	<input type="checkbox"/>
Server3	<input type="checkbox"/>

Correct Answer:



Run the **New-SCSPFTenantUserRole** cmdlet:

Server1	W3
Server2	
Server3	

Run the **New-SCUserRole** cmdlet:

Server1	W3
Server2	
Server3	

Configure the user role:

Server1	W3
Server2	
Server3	

[70-981 Practice Test](#)

[70-981 Study Guide](#)

[70-981 Exam Questions](#)



To Read the [Whole Q&As](#), please purchase the [Complete Version](#) from [Our website](#).

Try our product !

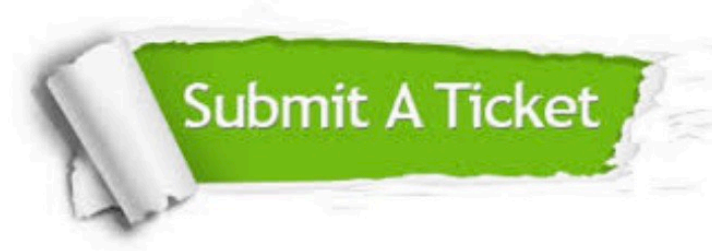
- 100% Guaranteed Success
- 100% Money Back Guarantee
- 365 Days Free Update
- Instant Download After Purchase
- 24x7 Customer Support
- Average 99.9% Success Rate
- More than 800,000 Satisfied Customers Worldwide
- Multi-Platform capabilities - [Windows](#), [Mac](#), [Android](#), [iPhone](#), [iPod](#), [iPad](#), [Kindle](#)

We provide exam PDF and VCE of Cisco, Microsoft, IBM, CompTIA, Oracle and other IT Certifications. You can view Vendor list of All Certification Exams offered:

<https://www.passapply.com/allproducts>

Need Help

Please provide as much detail as possible so we can best assist you.
To update a previously submitted ticket:



 <p>One Year Free Update Free update is available within One Year after your purchase. After One Year, you will get 50% discounts for updating. And we are proud to boast a 24/7 efficient Customer Support system via Email.</p>	 <p>Money Back Guarantee To ensure that you are spending on quality products, we provide 100% money back guarantee for 30 days from the date of purchase.</p>	 <p>Security & Privacy We respect customer privacy. We use McAfee's security service to provide you with utmost security for your personal information & peace of mind.</p>
---	---	--

Any charges made through this site will appear as Global Simulators Limited.
All trademarks are the property of their respective owners.
Copyright © passapply, All Rights Reserved.