



# 70-767<sup>Q&As</sup>

Implementing a Data Warehouse using SQL

## Pass Microsoft 70-767 Exam with 100% Guarantee

Free Download Real Questions & Answers **PDF** and **VCE** file from:

<https://www.passapply.com/70-767.html>

100% Passing Guarantee  
100% Money Back Assurance

Following Questions and Answers are all new published by Microsoft  
Official Exam Center

-  **Instant Download** After Purchase
-  **100% Money Back** Guarantee
-  **365 Days** Free Update
-  **800,000+** Satisfied Customers





### QUESTION 1

You deploy a Microsoft Azure SQL Data Warehouse instance. The instance must be available eight hours each day.

You need to pause Azure resources when they are not in use to reduce costs.

What will be the impact of pausing resources? To answer, select the appropriate options in the answer area.

NOTE: Each correct selection is worth one point.

Hot Area:

## Answer Area

What will happen to existing queries that are running?

	▼
The data warehouse instance pauses when existing queries have completed. No new queries are permitted.	
The existing queries will be immediately terminated.	
The existing queries will be paused until the data warehouse instance is resumed.	

What will happen to the charges for the data warehouse instance?

	▼
You will stop being charged for compute resources but will continue to be charged for storage.	
You will continue to be charged for both compute resources and storage.	
You are no longer charged for storage but continue to pay for the assigned data warehouse instance units.	

Correct Answer:

## Answer Area

What will happen to existing queries that are running?

	▼
The data warehouse instance pauses when existing queries have completed. No new queries are permitted.	
The existing queries will be immediately terminated.	
The existing queries will be paused until the data warehouse instance is resumed.	

What will happen to the charges for the data warehouse instance?

	▼
You will stop being charged for compute resources but will continue to be charged for storage.	
You will continue to be charged for both compute resources and storage.	
You are no longer charged for storage but continue to pay for the assigned data warehouse instance units.	

To save costs, you can pause and resume compute resources on-demand. For example, if you won't be using the database during the night and on weekends, you can pause it during those times, and resume it during the day. You



won't be

charged for DWUs while the database is paused.

When you pause a database:

Compute and memory resources are returned to the pool of available resources in the data center Data Warehouse Unit (DWU) costs are zero for the duration of the pause.

Data storage is not affected and your data stays intact.

SQL Data Warehouse cancels all running or queued operations.

When you resume a database:

SQL Data Warehouse acquires compute and memory resources for your DWU setting.

Compute charges for your DWUs resume.

Your data will be available.

You will need to restart your workload queries.

References: <https://docs.microsoft.com/en-us/azure/sql-data-warehouse/sql-datawarehouse-manage-compute-rest-api>

---

## QUESTION 2

You are developing a SQL Server Integration Services (SSIS) package to load data into a SQL Server 2016 database.

The name of the target instance is passed to the package via an Environment variable.

The Environment variable provides the server name to the Project parameter named ServerName.

The OLE DB Project Connection Manager has been parameterized.

You need to configure the Connection Manager property to accept the parameter.

Which property and parameter should you use? (To answer, configure the appropriate option or options in the dialog box in the answer area.)

Hot Area:



Parameterize - \_\_sql2012

Specify the property to parameterize and the parameter to use. An expression referencing the parameter will be created on the property.

Property:

- ConnectionString
- Description
- InitialCatalog
- Name
- Password
- RetainSameConnection
- ServerName
- UserName

Do not use parameter

Use existing parameter

- \$Project::DatabaseName
- \$Project::ProcessDate
- \$Project::ServerName
- \$Project::StartDate

Create new parameter

Name:

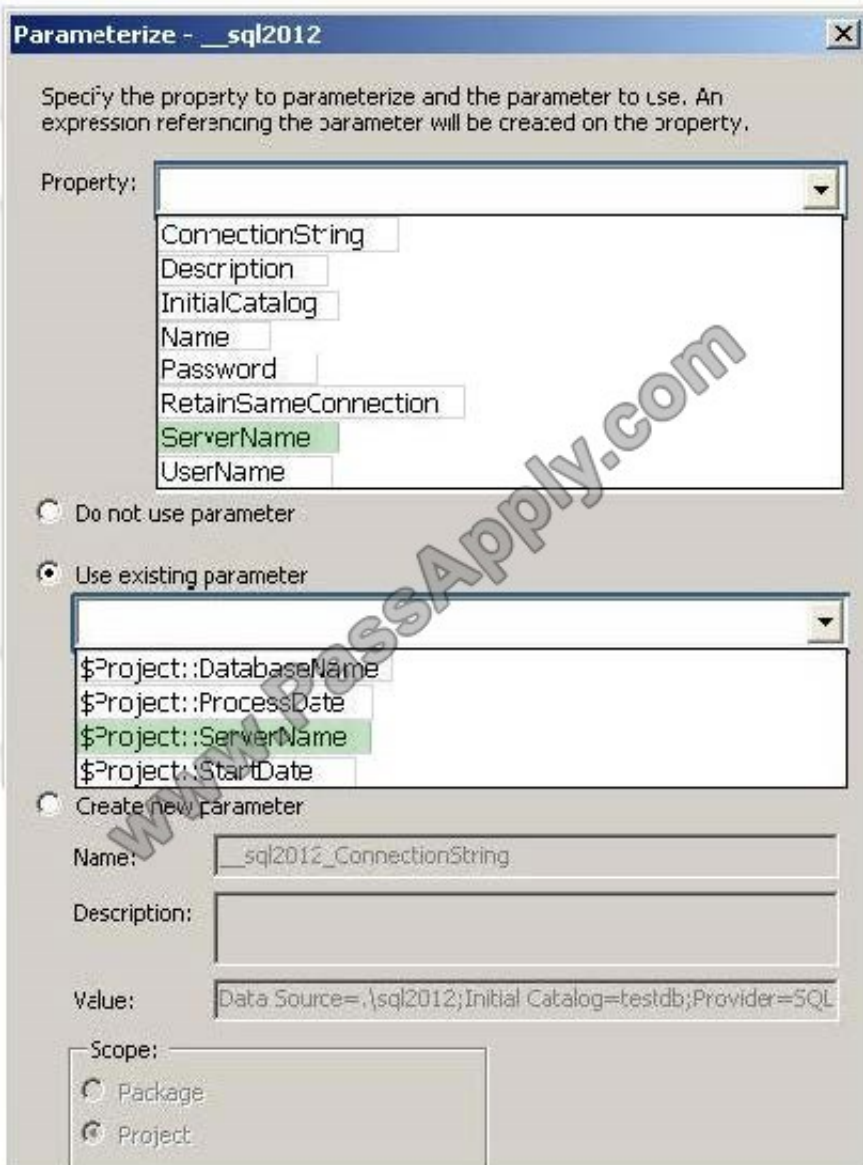
Description:

Value:

Scope:

- Package
- Project

Correct Answer:



### QUESTION 3

You are preparing to install SQL Server 2016 Master Data Services (MDS).

You need to ensure that the database requirements are met.

What should you install?

- A. Microsoft SharePoint Foundation 2010 SP1
- B. SQL Server 2016 Enterprise (64-bit) x64 on the database server
- C. SQL Server 2016 Data Center (64-bit) x64 on the database server
- D. SQL Server 2008 Enterprise (64-bit) x64 on the database server



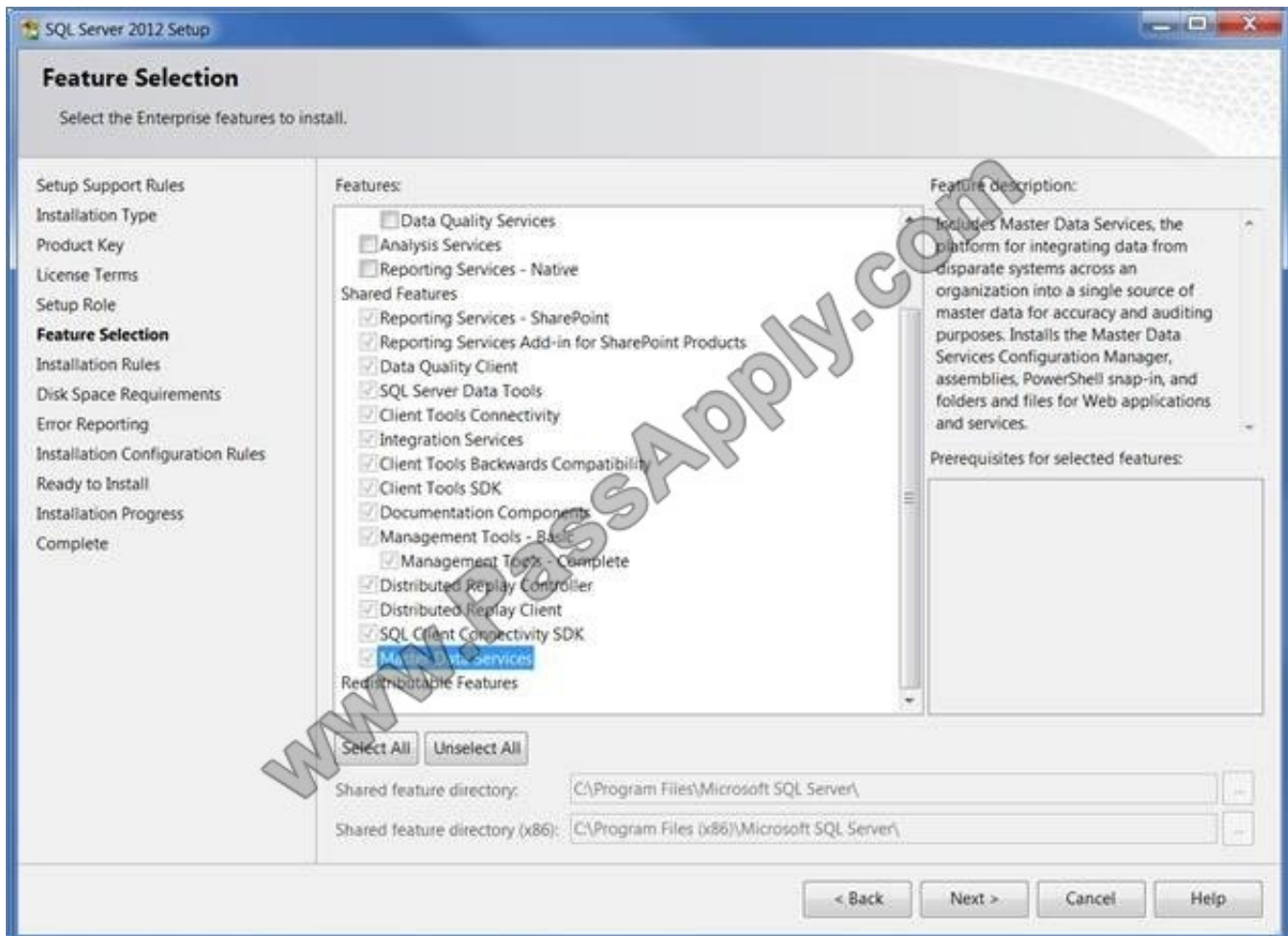
Correct Answer: B

\*

Master Data Services is a new feature introduced in SQL Server 2008 R2 and further enhanced in SQL Server 2016.

\*

SQL Server 2016 Enterprise features include Master Data Services:



Note:

\* Microsoft SQL Server Master Data Services is a Master Data Management (MDM) product from Microsoft, which will ship as a part of the Microsoft SQL Server database. Originally code-named Bulldog, Master Data Services is the rebranding of the Stratature MDM product titled +EDM, which Microsoft acquired in June 2007. Master Data Services is architecturally similar to +EDM, with increased integration with other Microsoft applications as well as some new features. Master Data Services first shipped with Microsoft SQL Server 2008 R2.

#### QUESTION 4

**Start of repeated scenario**



You are developing a Master Data Management (MDM) solution for a company by using Microsoft SQL Server Integration Services (SSIS), SQL Server Master Data Services (MDS), and SQL Server Data Quality Services (DQS). You have an MDS model named Geography that contains the entities described in the following table.

Entity	Code attribute	Name attribute	User-defined attributes
CountryRegion	CountryCode	CountryRegionName	
State	StateCode	StateName	CountryRegionCode
City	CityID	CityName	CountryRegionCode, StateCode
Manager	ManagerID	ManagerName	

You define a domain-based attribute in the State entity that references the CountryRegion entity. You define another domain-based attribute in the city entity that references the State and CountryRegion entities. A single derived hierarchy named Geography supports navigation between the CountryRegion, State, and City levels. Subscription views exist for all entities. The subscription views have the same name as the entity on which they are based.

You initialize each entity member. New City entity members are imported daily based on customer city values in a Customer Relationship Management (CRM) database. The CRM database is a SQL Server relational database. When new cities are imported from the CRM database, the state codes must be standardized to those already defined in the State entity.

In the CRM database, sales managers are assigned to countries/regions. A sales manager may be assigned to one or more countries/regions. A country/region may have one or more assigned sales managers. The CRM database contains a table named ManagerCountryRegion that stores a row for each manager-country/region relationship.

You create the following MDS users and map each user to an Active Directory Domain Services (AD DS) user account: User1, User2, and User3. Both User1 and User2 belong to the Explorer functional area.

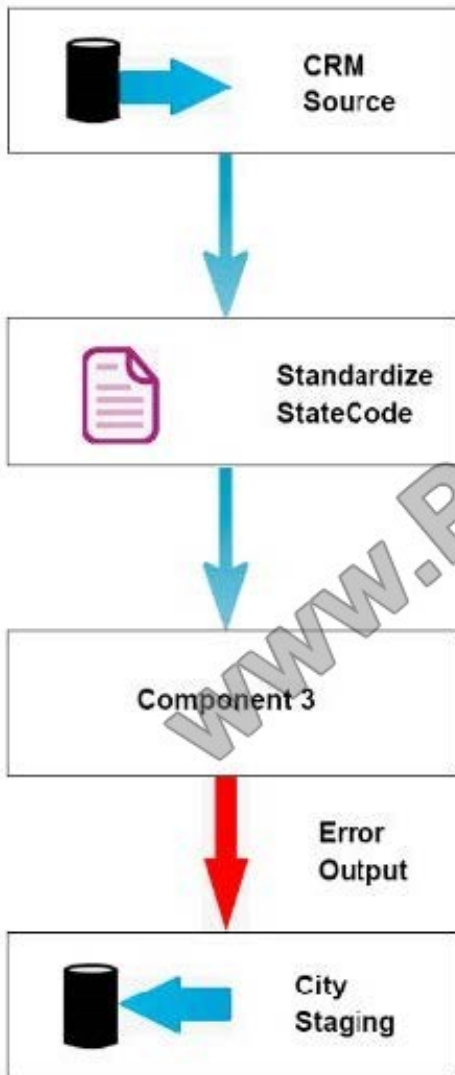


Users must be able to complete the tasks described in the following table.

User	Tasks
User1	Retrieve, add, or modify City entity members.
User2	Review City entity member changes made by User1 and approve or reject those changes.
User3	Perform all administration tasks and manage all master data in all models.

**End of repeated scenario**

You need to complete the development of the SSIS data flow to load cities into the City staging table.



Users must be able to complete the tasks described in the following table. You need to complete the development of the SSIS data flow to load cities into the City staging table.

Which transformation type should you use for Component 3?

- A. Import Column
- B. CDC Splitter





C. Conditional Split

D. Slowly Changing Dimension (SCD)

E. Lookup

Correct Answer: A

"When new cities are imported from the CRM database, the state codes must be standardized to those already defined in the State entity."

The Import Column transformation reads data from files and adds the data to columns in a data flow. This transformation has one input, one output, and one error output.

References:

<https://docs.microsoft.com/en-us/sql/integration-services/data-flow/transformations/import-column-transformation>

---

## QUESTION 5

You are developing a SQL Server Integration Services (SSIS) package.

The package is stored as the myPackage.dtsx file in the root directory of the C drive of the SSIS server.

You need to run the package from the command prompt.

Which command should you use?

A. dtexec /sql myPackage

B. dtexec /d "C:\File System\myPackage.dtsx"

C. dtexec /f "C:\myPackage.dtsx"

D. dtexec /com "myPackage.dtsx"

Correct Answer: C

[70-767 VCE Dumps](#)

[70-767 Practice Test](#)

[70-767 Exam Questions](#)



To Read the [Whole Q&As](#), please purchase the [Complete Version](#) from [Our website](#).

## Try our product !

100% Guaranteed Success  
100% Money Back Guarantee  
365 Days Free Update  
Instant Download After Purchase  
24x7 Customer Support  
Average 99.9% Success Rate  
More than 800,000 Satisfied Customers Worldwide  
Multi-Platform capabilities - [Windows](#), [Mac](#), [Android](#), [iPhone](#), [iPod](#), [iPad](#), [Kindle](#)

We provide exam PDF and VCE of Cisco, Microsoft, IBM, CompTIA, Oracle and other IT Certifications. You can view Vendor list of All Certification Exams offered:

<https://www.passapply.com/allproducts>

## Need Help

Please provide as much detail as possible so we can best assist you.  
To update a previously submitted ticket:



 <p><b>One Year Free Update</b> Free update is available within One Year after your purchase. After One Year, you will get 50% discounts for updating. And we are proud to boast a 24/7 efficient Customer Support system via Email.</p>	 <p><b>Money Back Guarantee</b> To ensure that you are spending on quality products, we provide 100% money back guarantee for 30 days from the date of purchase.</p>	 <p><b>Security &amp; Privacy</b> We respect customer privacy. We use McAfee's security service to provide you with utmost security for your personal information &amp; peace of mind.</p>
---	---	--

Any charges made through this site will appear as Global Simulators Limited.  
All trademarks are the property of their respective owners.  
Copyright © passapply, All Rights Reserved.