



70-767^{Q&As}

Implementing a Data Warehouse using SQL

Pass Microsoft 70-767 Exam with 100% Guarantee

Free Download Real Questions & Answers **PDF** and **VCE** file from:

<https://www.passapply.com/70-767.html>

100% Passing Guarantee
100% Money Back Assurance

Following Questions and Answers are all new published by Microsoft
Official Exam Center

-  **Instant Download** After Purchase
-  **100% Money Back** Guarantee
-  **365 Days** Free Update
-  **800,000+** Satisfied Customers





QUESTION 1

References: <https://www.guru99.com/star-snowflake-data-warehousing.html>

You are implementing a Microsoft SQL Server data warehouse with a multi-dimensional data model.

Business users observe that the value displayed for the profit margin is the average profit margin across all products. The profit margin must be calculated per product.

You need to modify the existing model without changing the overall structure of the data model.

What should you use?

- A. star schema
- B. snowflake schema
- C. conformed dimension
- D. slowly changing dimension (SCD)
- E. fact table
- F. semi-additive measure
- G. non-additive measure
- H. dimension table reference relationship

Correct Answer:

There are three types of facts:

Non-Additive: Non-additive facts are facts that cannot be summed up for any of the dimensions present in the fact table.

Additive: Additive facts are facts that can be summed up through all of the dimensions in the fact table.

Semi-Additive: Semi-additive facts are facts that can be summed up for some of the dimensions in the fact table, but not the others.

References:

<https://www.1keydata.com/datawarehousing/fact-table-types.html>

QUESTION 2

You are developing a SQL Server Integration Services (SSIS) package.

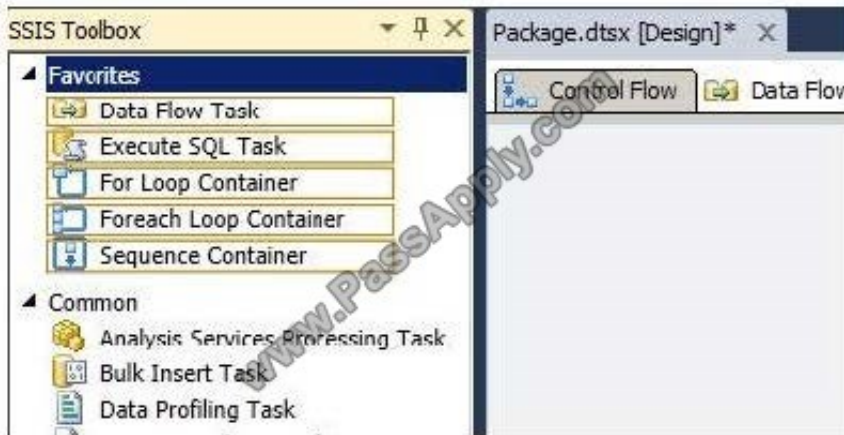
The package control flow will contain many tasks. The tasks will execute consecutively and none will execute more than once. Certain groups of tasks will share variable and transaction scope.

You need to group tasks together while enabling them to be collapsed and expanded as a group.

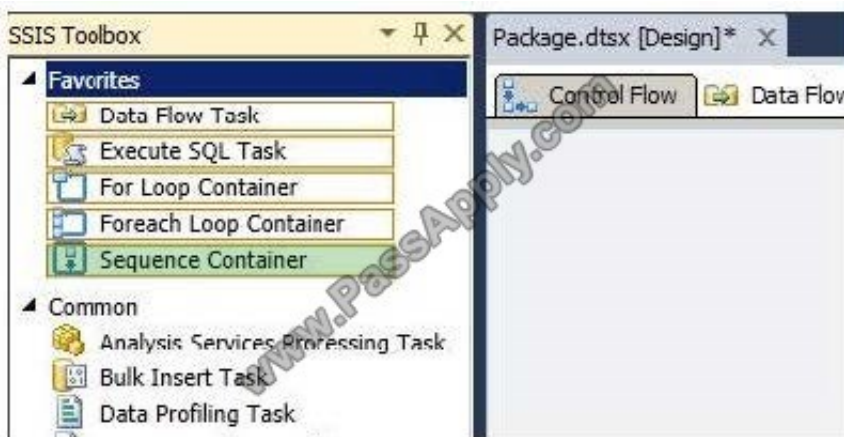


Which item should you use from the SSIS Toolbox? (To answer, select the appropriate item in the answer area.)

Hot Area:



Correct Answer:



QUESTION 3

You are creating a SQL Server Integration Services (SSIS) package to retrieve product data from two different sources. One source is hosted in a SQL Azure database. Each source contains products for different distributors.

Products for each distributor source must be combined for insertion into a single product table destination.

You need to select the appropriate data flow transformation to meet this requirement.

Which transformation types should you use? (Each answer represents a complete solution. Choose all that apply.)

- A. Slowly Changing Dimension
- B. pivot
- C. Lookup



D. Union All

E. Merge

Correct Answer: DE

QUESTION 4

You have a data quality project that focuses on the Products catalog for the company. The data includes a product reference number.

The product reference should use the following format: Two letters followed by an asterisk and then four or five numbers. An example of a valid number is XX*55522. Any reference number that does not conform to the format must be rejected

during the data cleansing.

You need to add a Data Quality Services (DQS) domain rule in the Products domain.

Which rule should you use?

- A. value matches pattern ZA*9876[5]
- B. value matches pattern AZ[*]1234[5]
- C. value matches regular expression AZ[*]1234[5]
- D. value matches pattern [a-zA-Z][a-zA-Z]*[0-9][0-9] [0-9][0-9] [0-9]?

Correct Answer: A

For a pattern matching rule: Any letter (A...Z) can be used as a pattern for any letter; case insensitive Any digit (0...9) can be used as a pattern for any digit Any special character, except a letter or a digit, can be used as a pattern for itself Brackets, [], define optional matching

Example: ABC:0000 This rule implies that the data will contain three parts: any three letters followed by a colon (:), which is again followed by any four digits.

QUESTION 5

You are developing a SQL Server Integration Services (SSIS) project to read and write data from a Windows Azure SQL Database database to a server that runs SQL Server 2016. The connection will be used by data flow tasks in multiple SSIS packages. The address of the target Windows Azure SQL Database database will be provided by a project parameter. You need to create a solution to meet the requirements by using the least amount of administrative effort.

What should you do?

- A. Add a SQLMOBILE connection manager to each package.
- B. Add an ADO.NET project connection manager.



- C. Add a SQLMOBILE project connection manager.
- D. Add an ADO.NET connection manager to each data flow task.
- E. Add a SQLMOBILE connection manager to each data flow task.
- F. Add an ADO.NET connection manager to each package.

Correct Answer: B

Ref: <http://www.databasejournal.com/features/mssql/windows-azure-sql-database-uploading-data-by-using-sql-server-integration-services.html>

[70-767 VCE Dumps](#)

[70-767 Practice Test](#)

[70-767 Exam Questions](#)



To Read the [Whole Q&As](#), please purchase the [Complete Version](#) from [Our website](#).

Try our product !

100% Guaranteed Success
100% Money Back Guarantee
365 Days Free Update
Instant Download After Purchase
24x7 Customer Support
Average 99.9% Success Rate
More than 800,000 Satisfied Customers Worldwide
Multi-Platform capabilities - [Windows](#), [Mac](#), [Android](#), [iPhone](#), [iPod](#), [iPad](#), [Kindle](#)

We provide exam PDF and VCE of Cisco, Microsoft, IBM, CompTIA, Oracle and other IT Certifications.
You can view Vendor list of All Certification Exams offered:

<https://www.passapply.com/allproducts>

Need Help

Please provide as much detail as possible so we can best assist you.
To update a previously submitted ticket:



 <p>One Year Free Update Free update is available within One Year after your purchase. After One Year, you will get 50% discounts for updating. And we are proud to boast a 24/7 efficient Customer Support system via Email.</p>	 <p>Money Back Guarantee To ensure that you are spending on quality products, we provide 100% money back guarantee for 30 days from the date of purchase.</p>	 <p>Security & Privacy We respect customer privacy. We use McAfee's security service to provide you with utmost security for your personal information & peace of mind.</p>
---------------------------------------------------------------------------------------------------------------------------------------------------------------------------------------------------------------------------------------------------------------------------------------------------------------------------------	-------------------------------------------------------------------------------------------------------------------------------------------------------------------------------------------------------------------------------------------------------------	------------------------------------------------------------------------------------------------------------------------------------------------------------------------------------------------------------------------------------------------------------------------------------

Any charges made through this site will appear as Global Simulators Limited.
All trademarks are the property of their respective owners.
Copyright © passapply, All Rights Reserved.