



70-765^{Q&As}

Provisioning SQL Databases

Pass Microsoft 70-765 Exam with 100% Guarantee

Free Download Real Questions & Answers **PDF** and **VCE** file from:

<https://www.passapply.com/70-765.html>

100% Passing Guarantee
100% Money Back Assurance

Following Questions and Answers are all new published by Microsoft
Official Exam Center

-  **Instant Download** After Purchase
-  **100% Money Back** Guarantee
-  **365 Days** Free Update
-  **800,000+** Satisfied Customers





QUESTION 1

You administer a Microsoft SQL Server 2014 database.

You have a SQL Server Agent job instance that runs using the service account. You have a job step within the job that requires elevated privileges.

You need to ensure that the job step can run using a different user account.

What should you use?

- A. a schedule
- B. an alert
- C. an operator
- D. a proxy

Correct Answer: D

A SQL Server Agent proxy defines the security context for a job step. A proxy provides SQL Server Agent with access to the security credentials for a Microsoft Windows user. Each proxy can be associated with one or more subsystems. A job step that uses the proxy can access the specified subsystems by using the security context of the Windows user. Before SQL Server Agent runs a job step that uses a proxy, SQL Server Agent impersonates the credentials defined in the proxy, and then runs the job step by using that security context.

References:[https://technet.microsoft.com/en-us/library/ms189064\(v=sql.105\).aspx](https://technet.microsoft.com/en-us/library/ms189064(v=sql.105).aspx)

QUESTION 2

You are building a new Always On Availability Group in Microsoft Azure. The corporate domain controllers (DCs) are attached to a virtual network named ProductionNetwork. The DCs are part of an availability set named ProductionServers1.

You create the first node of the availability group and add it to an availability set named ProductionServers2. The availability group node is a virtual machine (VM) that runs Microsoft SQL Server. You attach the node to ProductionNetwork.

The servers in the availability group must be directly accessible only by other company VMs in Azure.

You need to configure the second SQL Server VM for the availability group.

How should you configure the VM? To answer, drag the appropriate configuration settings to the correct target locations. Each configuration setting may be used once, more than once, or not at all. You may need to drag the split bar between

panes or scroll to view content.

NOTE: Each correct selection is worth one point.

Select and Place:



Configuration settings

None/Not Assigned

ProductionServers1

ProductionNetwork

ProductionServers2

Create a new Object

VM settings page

Settings
— □ ×

Storage

Disk type

Standard Premium (SSD)

* Storage account >

(new) sqlstorage3

Network

* Virtual network >

setting >

* Subnet >

ProductionServers (10.1.0.0/24)

* Public IP address >

setting >

* Network security group

(new) SQLServers

Extensions

Extensions >

No extensions

Monitoring

Diagnostics

Disabled Enabled

Availability

* Availability set >

setting >

OK

www.PassApply.com



Correct Answer:



Configuration settings

ProductionServers1

Create a new Object

VM settings page

Settings _ □ X

Storage

Disk type !

Standard Premium (SSD)

* Storage account ! >

(new) sqlstorage3

Network

* Virtual network ! >

ProductionNetwork

* Subnet ! >

ProductionServers (10.1.0.0/24)

* Public IP address ! >

None/Not Assigned

* Network security group ! >

(new) SQLServers

Extensions

Extensions ! >

No extensions

Monitoring

Diagnostics !

Disabled Enabled

Availability

* Availability set ! >

ProductionServers2

OK



Box 1: ProductionNetwork

The virtual network is named ProductionNetwork.

Box 2: None /Not Assigned

As the servers in the availability group must be directly accessible only by other company VMs in Azure, there should be no Public IP address.

Box 3: ProductionServer2

You create the first node of the availability group and add it to an availability set named ProductionServers2. The availability group node is a virtual machine (VM) that runs Microsoft SQL Server.

QUESTION 3

You use a contained database named ContosoDb within a domain.

You need to create a user who can log on to the ContosoDb database. You also need to ensure that you can port the database to different database servers within the domain without additional user account configurations.

Which type of user should you create?

- A. SQL user without login
- B. User mapped to an asymmetric key
- C. Domain user
- D. login mapped to a virtual account

Correct Answer: C

If the service must interact with network services, access domain resources like file shares or if it uses linked server connections to other computers running SQL Server, you might use a minimally-privileged domain account. Many server-to-server activities can be performed only with a domain user account.

References:<https://docs.microsoft.com/en-us/sql/database-engine/configure-windows/configure-windows-service-accounts-and-permissions>

QUESTION 4

Background

You manage the Microsoft SQL Server environment for a company that manufactures and sells automobile parts.

The environment includes the following servers: SRV1 and SRV2. SRV1 has 16 logical cores and hosts a SQL Server instance that supports a mission-critical application. The application has approximately 30,000 concurrent users and relies

heavily on the use of temporary tables.

The environment also includes the following databases: DB1, DB2, and Reporting. The Reporting database is protected



with Transparent Data Encryption (TDE). You plan to migrate this database to a new server. You detach the database and copy it to the new server.

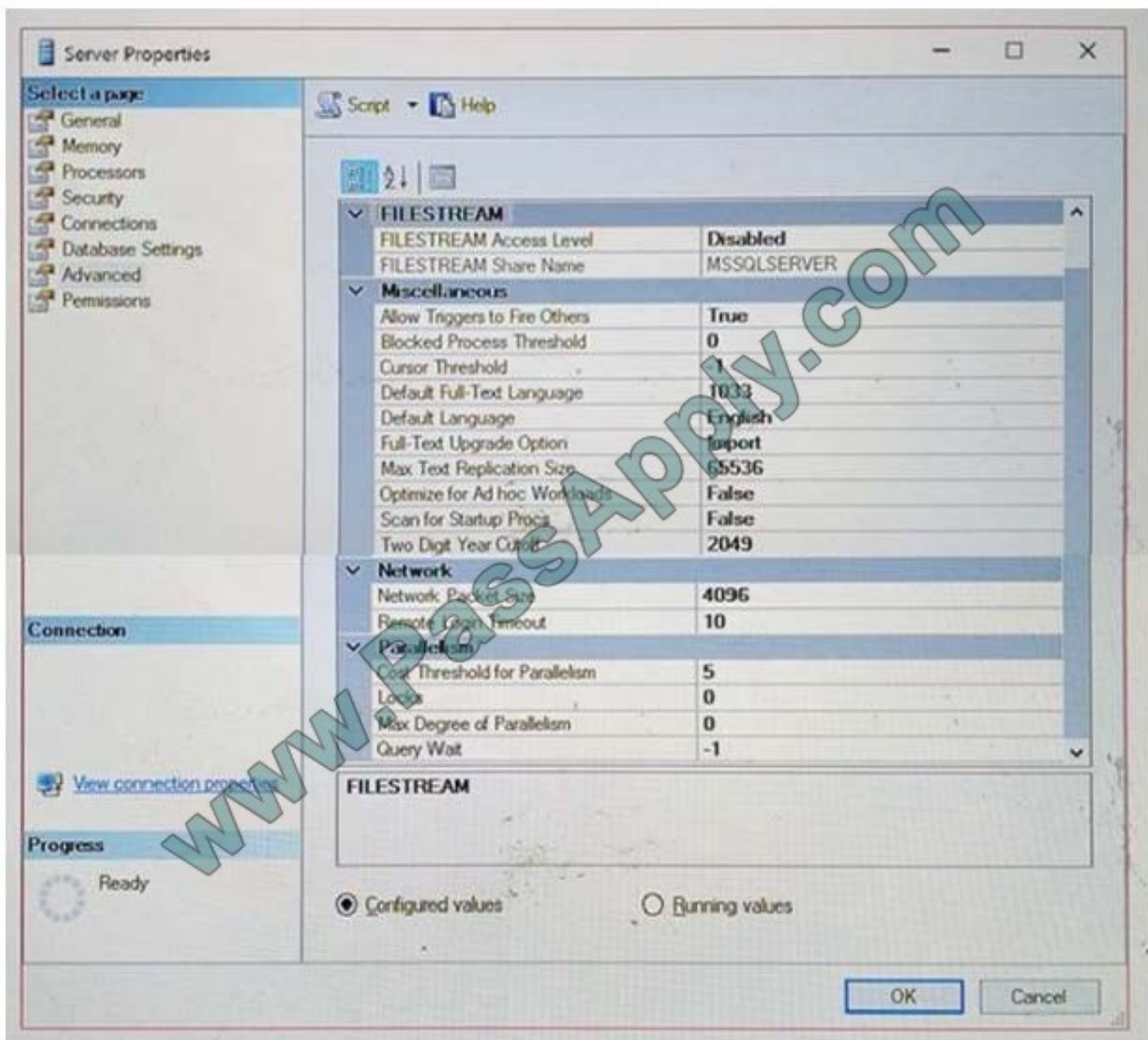
You are performing tuning on a SQL Server database instance. The application which uses the database was written using an object relationship mapping (ORM) tool which maps tables as objects within the application code. There are 30

stored procedures that are regularly used by the application.

After reviewing the plan cache you have identified that a large number of simple queries are using parallelism, and that execution plans are not being kept in the plan cache for very long.

You review the properties of the instance (Click the Exhibit button).

Exhibit:



You need to restore the Reporting database to SRV2. What should you do? To answer, drag the appropriate options to



the correct locations. Each option may be used once, more than once, or not at all. You may need to drag the split bar between panes or scroll to view content.

Select and Place:

Values

- master encryption key on the master database
- service master key
- server certificate
- Reporting dalabase .mdf file
- master key password

Answer area

1. Copy the certificate and private key backups from the old server to the new server.
2. Create:
3. Restore:
4. Attach the Reporting database.

Correct Answer:

Values

- master encryption key on the master database
- service master key
-
-
- master key password

Answer area

1. Copy the certificate and private key backups from the old server to the new server.
2. Create:
3. Restore:
4. Attach the Reporting database.

Step 2: Create: server certificate

Recreate the server certificate by using the original server certificate backup file.

Note: The password must be the same as the password that was used when the backup was created.

Step 3: Restore: Reporting database .mdf file.

-- Attach the database that is being moved.

-- The path of the database files must be the location where you have stored the database files.

Example:

```
CREATE DATABASE [CustRecords] ON
( FILENAME = N\\C:\Program Files\Microsoft SQL
Server\MSSQL13.MSSQLSERVER\MSSQL\DATA
```




```
\CustRecords.mdf\` ),  
( FILENAME = N\\C:\Program Files\Microsoft SQL  
Server\MSSQL13.MSSQLSERVER\MSSQL\DATA  
\CustRecords_log.LDF\` )  
FOR ATTACH ;  
GO
```

From scenario: The Reporting database is protected with Transparent Data Encryption (TDE). You plan to migrate this database to a new server. You detach the database and copy it to the new server.

References: <https://docs.microsoft.com/en-us/sql/relationaldatabases/security/encryption/move-a-tdeprotected-database-to-another-sql-server>

QUESTION 5

You have a Microsoft SQL Server instance which hosts all of your corporate databases. A database named Sales stores information about customers and their contact information.

You use the following processes for backing up the database:

All databases are configured for full recovery model.

Full backups are performed every morning at 2:00 AM.

Log backups are performed every hour starting at 9:00 AM.

At 9:35 AM, a member of the sales team mistakenly updates all customer records.

You need to recover the database to a stable state and recover as much data as possible without recovering the changes that the sales team member made.

Which four actions should you perform in sequence? To answer, move the appropriate actions from the list of actions to the answer area and arrange them in the correct order.

Select and Place:



Actions

- Restore the sales database from the last full backup. Specify the RECOVERY option.
- Restore the 9:45 AM sales tail log backup. Specify the STOP and RECOVERY options.
- Restore the sales tail log backup. Specify the stopatmark and RECOVERY options.
- Restore the sales log backup from 9:00 AM specifying with the NORECOVERY option.
- Restore the sales database from the last full backup specifying with the NORECOVERY option.
- Restore the 9:00 AM sales log files backup. Specifying the RECOVERY option.
- Perform a full backup of the sales database.
- Back up the tail log of the sales database.



Answer Area

Correct Answer:

Actions

- Restore the sales database from the last full backup. Specify the RECOVERY option.
- Restore the 9:45 AM sales tail log backup. Specify the STOP and RECOVERY options.
-
-
-
- Restore the 9:00 AM sales log files backup. Specifying the RECOVERY option.
- Perform a full backup of the sales database.
-



Answer Area

- Back up the tail log of the sales database.
- Restore the sales database from the last full backup specifying with the NORECOVERY option.
- Restore the sales log backup from 9:00 AM specifying with the NORECOVERY option.
- Restore the sales tail log backup. Specify the stopatmark and RECOVERY options.



VCE & PDF

PassApply.com

<https://www.passapply.com/70-765.html>

2021 Latest passapply 70-765 PDF and VCE dumps Download

[70-765 PDF Dumps](#)

[70-765 Exam Questions](#)

[70-765 Braindumps](#)



To Read the [Whole Q&As](#), please purchase the [Complete Version](#) from [Our website](#).

Try our product !

100% Guaranteed Success
100% Money Back Guarantee
365 Days Free Update
Instant Download After Purchase
24x7 Customer Support
Average 99.9% Success Rate
More than 800,000 Satisfied Customers Worldwide
Multi-Platform capabilities - [Windows](#), [Mac](#), [Android](#), [iPhone](#), [iPod](#), [iPad](#), [Kindle](#)

We provide exam PDF and VCE of Cisco, Microsoft, IBM, CompTIA, Oracle and other IT Certifications. You can view Vendor list of All Certification Exams offered:

<https://www.passapply.com/allproducts>

Need Help

Please provide as much detail as possible so we can best assist you.
To update a previously submitted ticket:



 <p>One Year Free Update Free update is available within One Year after your purchase. After One Year, you will get 50% discounts for updating. And we are proud to boast a 24/7 efficient Customer Support system via Email.</p>	 <p>Money Back Guarantee To ensure that you are spending on quality products, we provide 100% money back guarantee for 30 days from the date of purchase.</p>	 <p>Security & Privacy We respect customer privacy. We use McAfee's security service to provide you with utmost security for your personal information & peace of mind.</p>
---	---	--

Any charges made through this site will appear as Global Simulators Limited.
All trademarks are the property of their respective owners.
Copyright © passapply, All Rights Reserved.