



70-743^{Q&As}

Upgrading Your Skills to MCSA Windows Server 2016

Pass Microsoft 70-743 Exam with 100% Guarantee

Free Download Real Questions & Answers **PDF** and **VCE** file from:

<https://www.passapply.com/70-743.html>

100% Passing Guarantee
100% Money Back Assurance

Following Questions and Answers are all new published by Microsoft
Official Exam Center

-  **Instant Download** After Purchase
-  **100% Money Back** Guarantee
-  **365 Days** Free Update
-  **800,000+** Satisfied Customers





QUESTION 1

You deploy a Hyper-V server named Server1 in an isolated test environment. The test environment is prevented from accessing the Internet. Server1 runs the Datacenter edition of Windows Server 2016. You plan to deploy the following guest virtual machines on the server:

Quantity	Operating system	Domain member
10	Windows Server 2012 R2	Yes
4	Windows Server 2016	No
5	Windows Server 2016	Yes

Which activation model should you use for the virtual machines?

- A. Multiple Activation Key (MAK)
- B. Key Management Service (KMS)
- C. Original Equipment Manufacturer (OEM) key
- D. Automatic Virtual Machine Activation (AVMA)

Correct Answer: D

On virtualization servers that are activated using Volume Licensing or OEM licensing, AVMA offers several benefits. Server datacenter managers can use AVMA to do the following:

*

Activate virtual machines in remote locations

*

Activate virtual machines with or without an internet connection

*

Track virtual machine usage and licenses from the virtualization server, without requiring any access rights on the virtualized systems Note: AVMA requires a Microsoft Virtualization Server running Windows Server 2012 R2 Datacenter or Windows Server 2016 Datacenter.

QUESTION 2

You have a server named Server1 that runs Windows Server 2016. The Docker daemon runs on Server1. You need to ensure that members of a security group named Docker Administrators can administer Docker. What should you do?

- A. Edit the Configuration.json file.
- B. Modify the Security settings of Docker.exe.



- C. Run the Set-Service cmdlet.
- D. Run the sc config command.

Correct Answer: D

The preferred method for configuring the Docker Engine on Windows is using a configuration file. The configuration file can be found at \\C:\ProgramData\Docker\config\daemon.json\'. If this file does not already exist, it can be created.

Note: The Docker Engine can also be configured by modifying the Docker service using the sc config command.

References: <https://docs.microsoft.com/en-us/virtualization/windowscontainers/manage-docker/configure-docker-daemon>

QUESTION 3

This question is part of a series of questions that present the same scenario. Each question in the series contains a unique solution that might meet the stated goals. Some question sets might have more than one correct solution, while others might not have a correct solution.

After your answer a question in this section, you will NOT be able to return to it. As a result, these questions will not appear in the review screen.

Your network contains an Active Directory forest named contoso.com.

You need to identify which server is the schema master. Solution: From a command prompt, you run netdom query fsmo. Does this meet the goal?

- A. Yes
- B. No

Correct Answer: A

Windows PowerShell Copyright (C) 2016 Microsoft Corporation. All rights reserved. PS C:\Windows\system32> netdom query fsmo Schema master dc10.contoso.com Domain naming master dc10.contoso.com PDC dc10.contoso.com RID pool manager dc10.contoso.com Infrastructure master dc10.contoso.com The command completed successfully.

References: <https://blogs.technet.microsoft.com/mempson/2007/11/08/how-to-find-out-who-has-your-fsmo-roles/>

QUESTION 4

Your network contains an Active Directory forest. The forest contains an Active Directory Federation Services (AD FS) deployment. The AD FS deployment contains the following:

*

An AD FS server named server1.contoso.com that runs Windows Server 2016

*

A Web Application Proxy used to publish AD FS



*

A LIPN that uses the contoso.com suffix

*

A namespace named adfs.contoso.com

You create a Microsoft Office 365 tenant named contoso.onmicrosoft.com. You use Microsoft Azure Active Directory Connect (AD Connect) to synchronize all of the users and the UPNs from the contoso.com forest to Office 365.

You need to configure federation between Office 365 and the on-premises deployment of Active Directory.

Which three commands should you run in sequence from Server1? To answer, move the appropriate commands from the list of commands to the answer area and arrange them in the correct order.

Select and Place:

Commands

Answer Area

- Convert-MsolDomainToFederated -DomainName contoso.com
- Enter-PSSession -Name Office365
- Convert_MsolDomainToFederated -DomainName adfs.contoso.com
- Set-MsolADFSContext -Computer server1contoso.com
- Connect-MsolService
- Set-MsolADFSContext -Computer contoso.com

Correct Answer:



Commands

Answer Area

	Connect-MSolService
Enter-PSSession -Name Office365	Set-MSolADFSContext -Computer server1.contoso.com
Convert-MSolDomainToFederated -DomainName adfs.contoso.com	Convert-MSolDomainToFederated -DomainName contoso.com
Set-MSolADFSContext -Computer contoso.com	

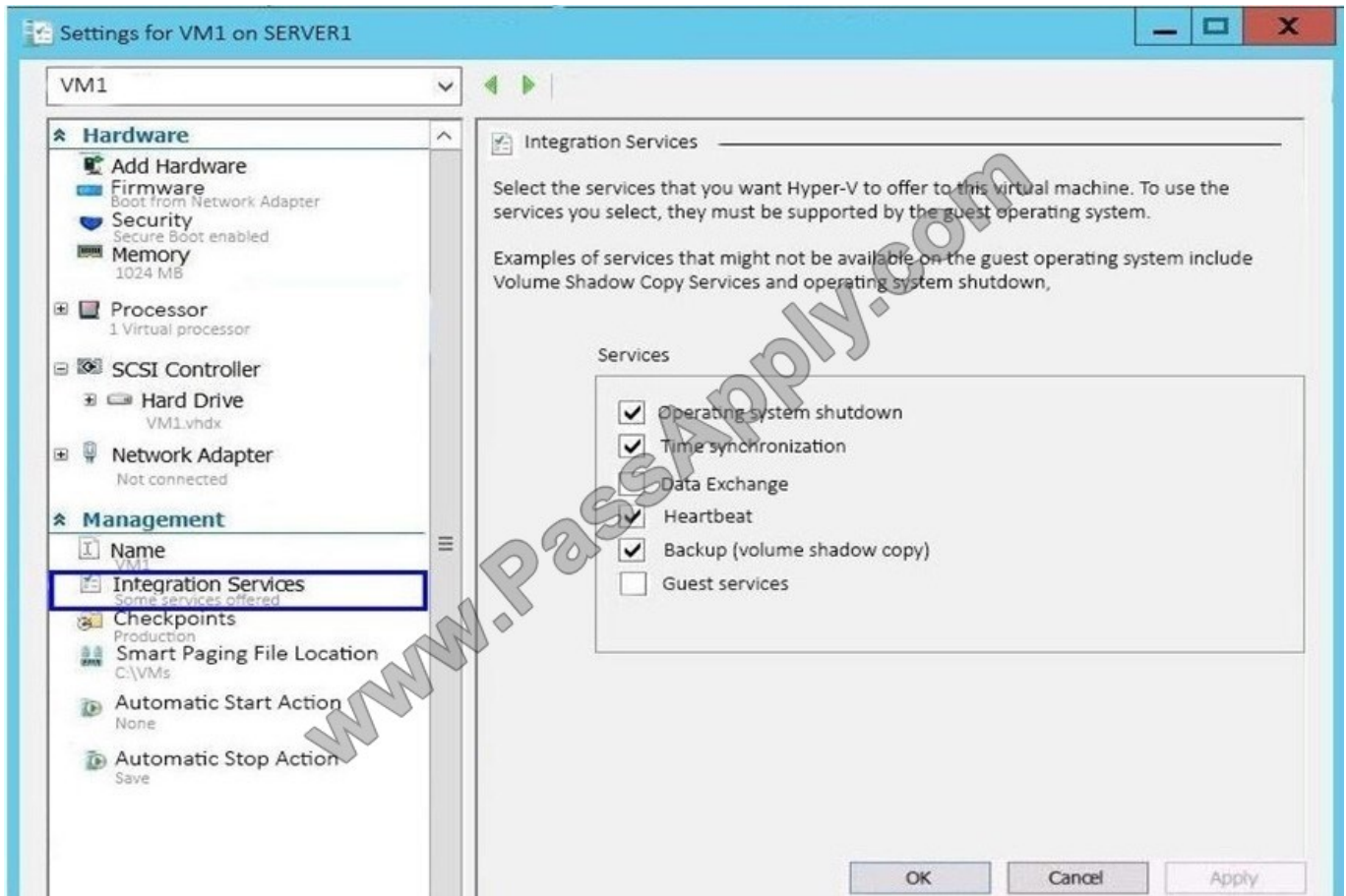
QUESTION 5

Note: This question is part of a series of questions that present the same scenario. Each question in the series contains a unique solution that might meet the stated goals. Some questions sets might have more than one correct solutions,

while others might not have a correct solution.

After you answer a question in this section, you will NOT be able to return to it. As a result, these questions will not appear in the review screen.

You have a Hyper-V host named Server1 that hosts a virtual machine named VM1. Server1 and VM1 run Windows Server 2016. The settings for VM1 are configured as shown in the exhibit below:



You need to ensure that you can use the Copy-VMFile cmdlet on Server1 to copy files from VM1.

Solution: You need to enable the Data Exchange integration service for VM1

Does this meet the goal?

- A. Yes
- B. No

Correct Answer: B

Guest Services:

This is a new Integration Services component introduced in Windows Server 2012 R2 that is disabled by default.

Guest Services enables the copying of files to a virtual machine using WMI APIs or using the new Copy-VMFile PowerShell cmdlet



To Read the [Whole Q&As](#), please purchase the [Complete Version](#) from [Our website](#).

Try our product !

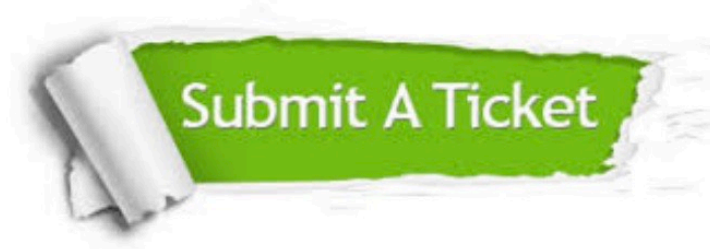
100% Guaranteed Success
100% Money Back Guarantee
365 Days Free Update
Instant Download After Purchase
24x7 Customer Support
Average 99.9% Success Rate
More than 800,000 Satisfied Customers Worldwide
Multi-Platform capabilities - [Windows](#), [Mac](#), [Android](#), [iPhone](#), [iPod](#), [iPad](#), [Kindle](#)

We provide exam PDF and VCE of Cisco, Microsoft, IBM, CompTIA, Oracle and other IT Certifications. You can view Vendor list of All Certification Exams offered:

<https://www.passapply.com/allproducts>

Need Help

Please provide as much detail as possible so we can best assist you.
To update a previously submitted ticket:



 <p>One Year Free Update Free update is available within One Year after your purchase. After One Year, you will get 50% discounts for updating. And we are proud to boast a 24/7 efficient Customer Support system via Email.</p>	 <p>Money Back Guarantee To ensure that you are spending on quality products, we provide 100% money back guarantee for 30 days from the date of purchase.</p>	 <p>Security & Privacy We respect customer privacy. We use McAfee's security service to provide you with utmost security for your personal information & peace of mind.</p>
---	---	--

Any charges made through this site will appear as Global Simulators Limited.
All trademarks are the property of their respective owners.
Copyright © passapply, All Rights Reserved.