



70-742^{Q&As}

Identity with Windows Server 2016

Pass Microsoft 70-742 Exam with 100% Guarantee

Free Download Real Questions & Answers **PDF** and **VCE** file from:

<https://www.passapply.com/70-742.html>

100% Passing Guarantee
100% Money Back Assurance

Following Questions and Answers are all new published by Microsoft
Official Exam Center

-  **Instant Download** After Purchase
-  **100% Money Back** Guarantee
-  **365 Days** Free Update
-  **800,000+** Satisfied Customers





QUESTION 1

You have an Active Directory Rights Management Services (AD RMS) server named RMS1.

Multiple documents are protected by using RMS1.

RMS1 fails and cannot be recovered.

You install the AD RMS server role on a new server named RMS2.

You restore the AD RMS database from RMS1 to RMS2.

Users report that they fail to open the protected documents and to protect new documents.

You need to ensure that the users can access the protected content.

What should you do?

- A. From Active Directory Rights Management, update the Service Connection Point (SCP) for RMS1.
- B. From DNS, create an alias (CNAME) record for RMS2.
- C. From DNS, modify the service location (SRV) record for RMS1.
- D. From RMS2, register a service principal name (SPN) in Active Directory.

Correct Answer: D

QUESTION 2

Note: This question is part of a series of questions that present the same scenario. Each question in the series contains a unique solution that might meet the stated goals. Some question sets might have more than one correct solution, while

others might not have a correct solution.

After you answer a question in this section, you will NOT be able to return to it. As a result, these questions will not appear in the review screen.

Your network contains an Active Directory forest named contoso.com. The forest contains an Active Directory Rights Management Services (AD RMS) deployment.

Your company establishes a partnership with another company named Fabrikam, Inc. The network of Fabrikam contains an Active Directory forest named fabrikam.com and an AD RMS deployment.

You need to ensure that the users in contoso.com can access rights protected documents sent by the users in fabrikam.com.

Solution: From AD RMS in contoso.com, you configure fabrikam.com as a trusted publisher domain.

Does this meet the goal?

- A. Yes



B. No

Correct Answer: A

By default, an AD RMS Licensing Server can issue use licenses for only content where it originally issued the publishing license. In some situations, this may not be acceptable. In order to specify a cluster that is allowed to issue use licenses for content protected by a different cluster, the first cluster must be defined as a trusted publishing domain. If content was published by another certification cluster either in your organization, for example, a subsidiary organization in another forest, or in a separate organization, your AD RMS cluster can grant use licenses to users for this content by configuring a Trusted Publishing Domain on your AD RMS cluster. By adding a Trusted Publishing Domain, you set up a trust relationship between your AD RMS cluster and the other certification cluster by importing the Trusted Publishing Certificate of the other cluster.

References: <https://books.google.co.za/books?id=gjR-BAAAQBAJandpg=PA397andlpg=PA397anddq=configure+a+partners+forest+as+a+trusted+publishing+domain+-+AD+RMSandsource=blandots=mohQXTyW9sandsig=NJ7oFHuLYOs72o9EMyQilscUW8andhl=enandsa=Xandved=0ahUKEwjuiW24sPbAhWGRMAKHQcEB6EQ6AEIOzAD#v=onepageandq=configure%20a%20partners%20forest%20as%20a%20trusted%20publishing%20domain%20-%20AD%20RMSandf=false>

QUESTION 3

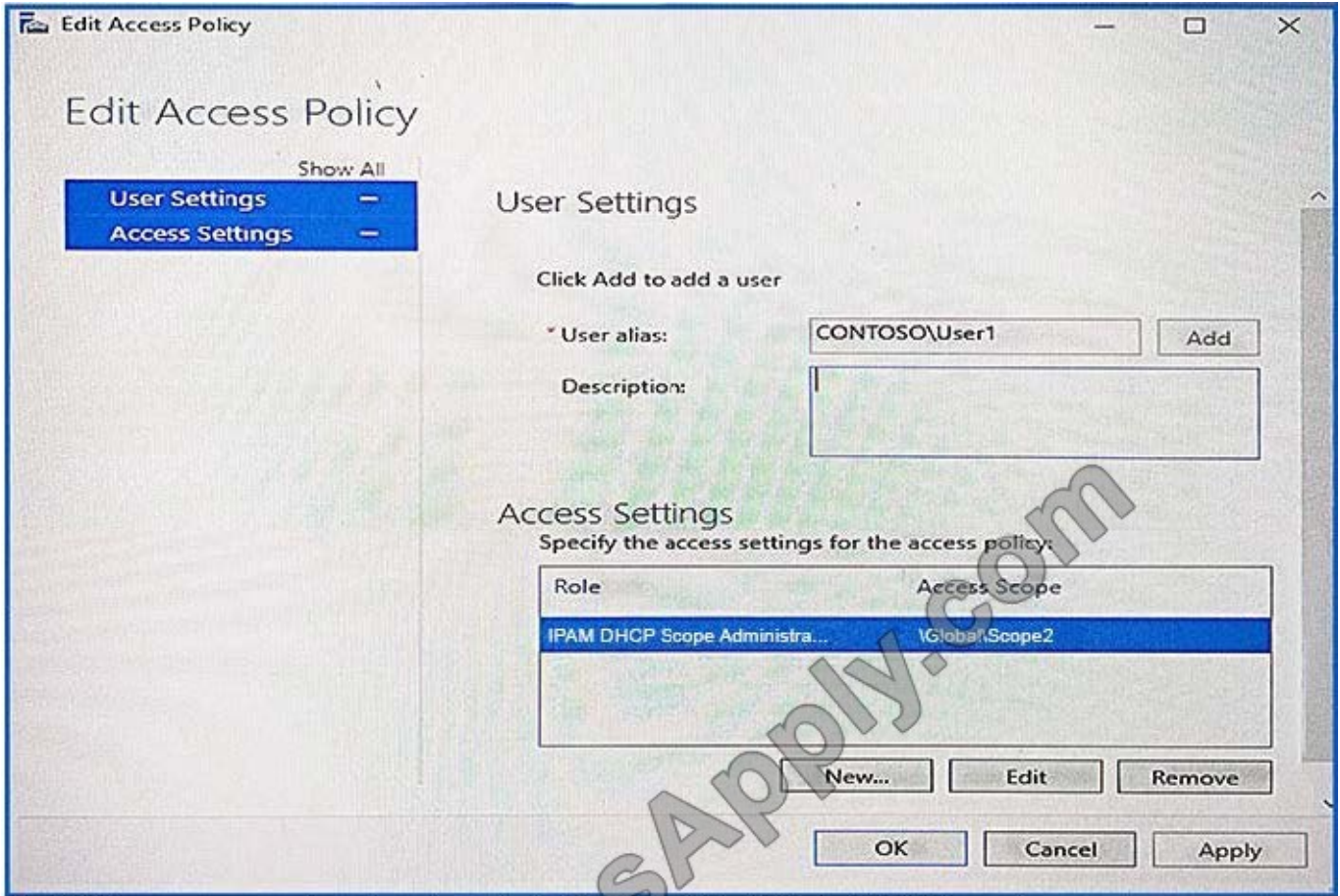
Your network contains an Active Directory domain named contoso.com.

The domain contains two servers named Server1 and Server2 that run Windows Server 2016.

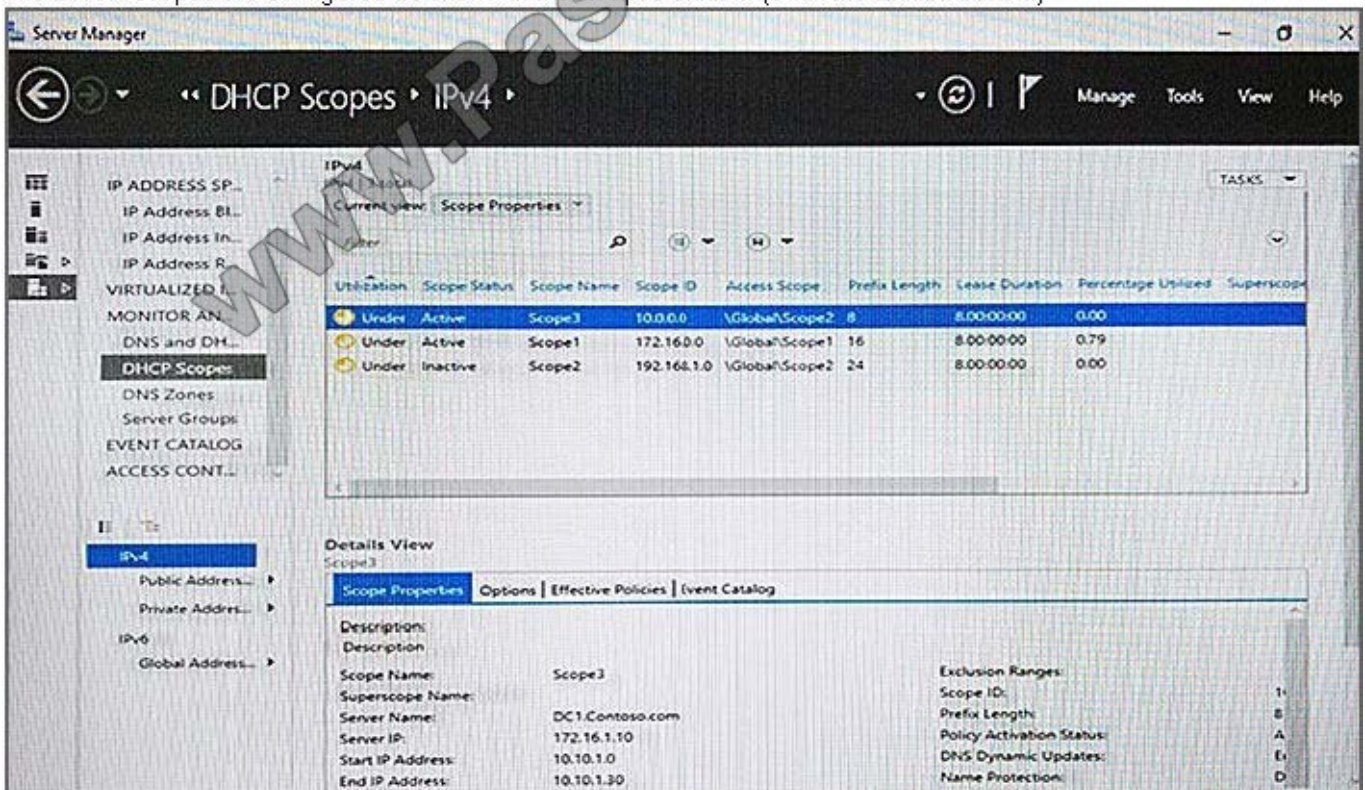
Server1 has IP Address Management (IPAM) installed. Server2 has the DHCP Server role installed. The IPAM server retrieves data from Server2.

The domain has two users named User1 and User2 and a group named Group1. User1 is the only member of Group1.

Server1 has one IPAM access policy. You edit the access policy as shown in the Policy exhibit. (Click the Exhibit button.)



The DHCP scopes are configured as shown in the Scopes exhibit. (Click the Exhibit button.)



The DHCP scopes are configured as shown in the Scopes exhibit. (Click the Exhibit button.)



For each of the following statements, select Yes if the statement is true. Otherwise, select No.

Hot Area:

Answer Area

Statements	Yes	No
User1 can modify the description of Scope1.	<input type="radio"/>	<input type="radio"/>
User2 can modify the description of Scope1.	<input type="radio"/>	<input type="radio"/>
User1 can modify the description of Scope2.	<input type="radio"/>	<input type="radio"/>

Correct Answer:

Answer Area

Statements	Yes	No
User1 can modify the description of Scope1.	<input type="radio"/>	<input checked="" type="radio"/>
User2 can modify the description of Scope1.	<input type="radio"/>	<input checked="" type="radio"/>
User1 can modify the description of Scope2.	<input checked="" type="radio"/>	<input type="radio"/>

QUESTION 4

Note: This question is part of a series of questions that use the same scenario. For you convenience, the scenario is repeated in each question. Each question presents a different goal and answer choices, but the text of the scenario is

exactly the same in each question in this series.

Start of repeated scenario.

You work for a company named Contoso, Ltd.



The network contains an Active Directory forest named contoso.com. A forest trust exists between contoso.com and an Active Directory forest named adatum.com.

The contoso.com forest contains the objects configured as shown in the following table.

Object name	Object type	Group scope	Group type
User1	User	<i>Not applicable</i>	<i>Not applicable</i>
User2	User	<i>Not applicable</i>	<i>Not applicable</i>
Computer1	Computer	<i>Not applicable</i>	<i>Not applicable</i>
Group1	Group	Domain local	Security
Group2	Group	Domain local	Security
Group3	Group	Universal	Security
Group4	Group	Global	Security
Group5	Group	Universal	Security

Group1 and Group2 contain only user accounts.

Contoso hires a new remote user named User3. User3 will work from home and will use a computer named Computer3 that runs Windows 10. Computer3 is currently in a workgroup.

An administrator named Admin1 is a member of the Domain Admins group in the contoso.com domain.

From Active Directory Users and Computers, you create an organizational unit (OU) named OU1 in the contoso.com domain, and then you create a contact named Contact1 in OU1. An administrator of the adatum.com domain runs the Set-

ADUser cmdlet to configure a user named User1 to have a user logon name of User1@litwareinc.com.

End of repeated scenario.

You need to ensure that Admin1 can convert Group1 to a global group.

What should you do?

- A. Add Admin1 to the Enterprise Admin group.
- B. Remove all the member from Group1.
- C. Modify the Security settings of Group1.
- D. Convert Group1 to a universal security group.

Correct Answer: B

QUESTION 5

Note: This question is part of a series of questions that use the same scenario. For you convenience, the scenario is



repeated in each question. Each question presents a different goal and answer choices, but the text of the scenario is exactly the same in each question in this series.

Start of repeated scenario.

You work for a company named Contoso, Ltd.

The network contains an Active Directory forest named contoso.com. A forest trust exists between contoso.com and an Active Directory forest named adatum.com.

Object name	Object type	Group scope	Group type
User1	User	<i>Not applicable</i>	<i>Not applicable</i>
User2	User	<i>Not applicable</i>	<i>Not applicable</i>
Computer1	Computer	<i>Not applicable</i>	<i>Not applicable</i>
Group1	Group	Domain local	Security
Group2	Group	Domain local	Security
Group3	Group	Universal	Security
Group4	Group	Global	Security
Group5	Group	Universal	Security

The contoso.com forest contains the objects configured as shown in the following table.

Group1 and Group2 contain only user accounts.

Contoso hires a new remote user named User3. User3 will work from home and will use a computer named Computer3 that runs Windows 10. Computer3 is currently in a workgroup.

An administrator named Admin1 is a member of the Domain Admins group in the contoso.com domain.

From Active Directory Users and Computers, you create an organizational unit (OU) named OU1 in the contoso.com domain, and then you create a contact named Contact1 in OU1.

An administrator of the adatum.com domain runs the Set-ADUser cmdlet to configure a user named User1 to have a user logon name of User1@litwareinc.com.

End or repeated scenario.

You need to join Computer3 to the contoso.com domain by using offline domain join.

Which command should you use in the contoso.com domain and on Computer3? To answer, select the appropriate options in the answer area.

Hot Area:



Answer Area

The contoso.com domain:

- Add-Computer with the -DomainName parameter
- Djoin.exe with the /provision parameter
- Djoin.exe with the /requestodj parameter
- Net computer with the /add parameter
- Netdom.exe with the join parameter

Computer3:

- Add-Computer with the -DomainName parameter
- Djoin.exe with the /provision parameter
- Djoin.exe with the /requestodj parameter
- Net computer with the /add parameter
- Netdom.exe with the join parameter

Correct Answer:

Answer Area

The contoso.com domain:

- Add-Computer with the -DomainName parameter
- Djoin.exe with the /provision parameter
- Djoin.exe with the /requestodj parameter
- Net computer with the /add parameter
- Netdom.exe with the join parameter

Computer3:

- Add-Computer with the -DomainName parameter
- Djoin.exe with the /provision parameter
- Djoin.exe with the /requestodj parameter
- Net computer with the /add parameter
- Netdom.exe with the join parameter



VCE & PDF

PassApply.com

<https://www.passapply.com/70-742.html>

2021 Latest passapply 70-742 PDF and VCE dumps Download

[70-742 PDF Dumps](#)

[70-742 VCE Dumps](#)

[70-742 Braindumps](#)



To Read the [Whole Q&As](#), please purchase the [Complete Version](#) from [Our website](#).

Try our product !

100% Guaranteed Success
100% Money Back Guarantee
365 Days Free Update
Instant Download After Purchase
24x7 Customer Support
Average 99.9% Success Rate
More than 800,000 Satisfied Customers Worldwide
Multi-Platform capabilities - [Windows](#), [Mac](#), [Android](#), [iPhone](#), [iPod](#), [iPad](#), [Kindle](#)

We provide exam PDF and VCE of Cisco, Microsoft, IBM, CompTIA, Oracle and other IT Certifications. You can view Vendor list of All Certification Exams offered:

<https://www.passapply.com/allproducts>

Need Help

Please provide as much detail as possible so we can best assist you.
To update a previously submitted ticket:



 <p>One Year Free Update Free update is available within One Year after your purchase. After One Year, you will get 50% discounts for updating. And we are proud to boast a 24/7 efficient Customer Support system via Email.</p>	 <p>Money Back Guarantee To ensure that you are spending on quality products, we provide 100% money back guarantee for 30 days from the date of purchase.</p>	 <p>Security & Privacy We respect customer privacy. We use McAfee's security service to provide you with utmost security for your personal information & peace of mind.</p>
---	---	--

Any charges made through this site will appear as Global Simulators Limited.
All trademarks are the property of their respective owners.
Copyright © passapply, All Rights Reserved.