



# 70-741<sup>Q&As</sup>

Networking with Windows Server 2016

## Pass Microsoft 70-741 Exam with 100% Guarantee

Free Download Real Questions & Answers **PDF** and **VCE** file from:

<https://www.passapply.com/70-741.html>

100% Passing Guarantee  
100% Money Back Assurance

Following Questions and Answers are all new published by Microsoft  
Official Exam Center

-  **Instant Download** After Purchase
-  **100% Money Back** Guarantee
-  **365 Days** Free Update
-  **800,000+** Satisfied Customers





### QUESTION 1

Your network contains an Active Directory forest. The forest contains a domain named contoso.com.

All of the DHCP servers and the DNS servers in the forest are managed by using an IP Address Management (IPAM) server named Cont\_IPAM1.

You acquire a new company that has an Active Directory forest. The forest contains a domain named fabrikam.com.

You have six servers that are configured as shown in the following table.

Server name	Forest	Operating system	Configuration
Cont_IPAM1	Contoso.com	Windows Server 2012 R2	IPAM
Cont_DNS1	Contoso.com	Windows Server 2016	DNS
Cont_DNS2	Contoso.com	Windows Server 2016	DNS
Cont_DHCP1	Contoso.com	Windows Server 2016	DHCP
Fabr_DNS1	Fabrikam.com	Windows Server 2012 R2	DNS
Fabr_DHCP1	Fabrikam.com	Windows Server 2012 R2	DHCP

You need to ensure that all of the DHCP and DNS servers in both of the forests can be managed by using Cont-IPAM1. The solution must use the principle of least privileges. Which two actions should you perform? Each correct answer presents part of the solution.

- A. Upgrade Fabr\_DNS1 to Windows Server 2016.
- B. Upgrade Fabr\_DHCP1 to Windows Server 2016.
- C. Create an outgoing forest trust from contoso.com to fabrikam.com.
- D. Upgrade Cont\_IPAM1 to Windows Server 2016.
- E. Create a two-way forest trust between contoso.com and fabrikam.com

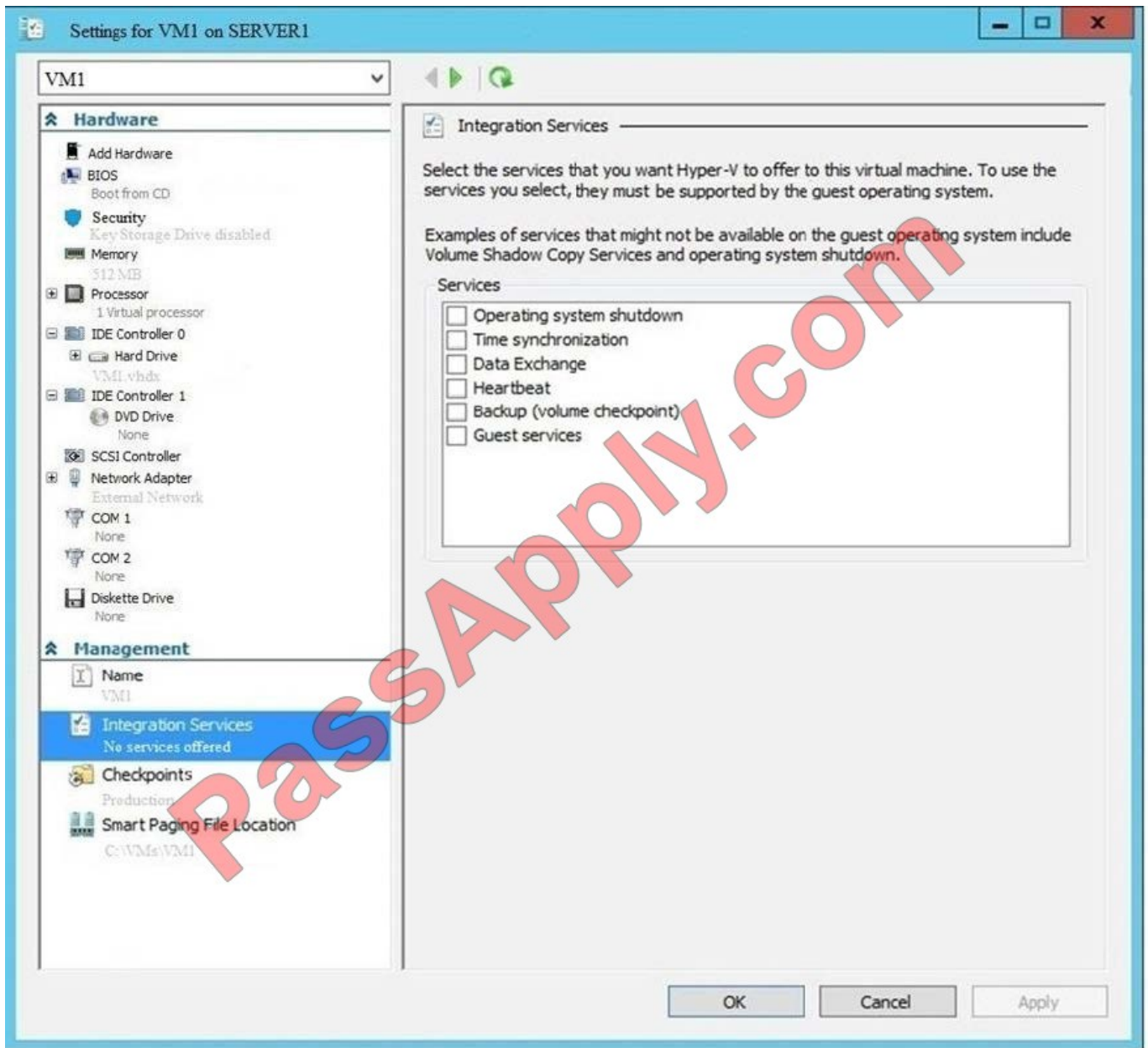
Correct Answer: DE

References: <https://github.com/MicrosoftDocs/windowsserverdocs/blob/master/WindowsServerDocs/networking/technologies/ipam/Manage-Resources-in-Multiple-Active-Directory-Forests.md> Tomsho, Greg, MCSA Guide to Networking with Windows Server 2016, Exam 70-741, Cengage Learning, Boston, 2018, p. 223

### QUESTION 2



You have a Hyper-V host named Server1 that runs Windows Server 2016. Server1 has multiple network adapters that have virtual machine queue (VMQ) enabled. On Server1, you create a virtual machine named VM1 as shown in the exhibit.



You need to ensure that you can use virtual Receive-side Scaling (vRSS) on VM1. What should you do?

- A. Add additional memory.
- B. Add additional processors.
- C. Add additional network adapters.
- D. Enable the Data Exchange integration service.

Correct Answer: B



References: <https://docs.microsoft.com/en-us/windows-server/networking/technologies/vrss/vrss-top>

---

### QUESTION 3

Note: This question is part of a series of questions that present the same scenario. Each question in the series contains a unique solution that might meet the stated goals. Some question sets might have more than one correct solution, while

others might not have a correct solution.

After you answer a question in this sections, you will NOT be able to return to it. As a result, these questions will not appear in the review screen.

You have a server named Server1 that has the Network Policy and Access Services server role installed.

You create a Shared Secret Network Policy Server (NPS) template named Template1.

You need to view the shared secret string used for Template1.

Solution: From the Network Policy Server console, you export the configuration, and you view the exported XML file.

Does this meet the goal?

A. Yes

B. No

Correct Answer: A

---

### QUESTION 4

#### HOTSPOT

You have a DNS zone named contoso.com. A host named server1.contoso.com runs an application named App1. Users connect to App1 by using the name app1.contoso.com. The DNS zone has a CNAME record for app1.contoso.com.

In one day, the application administrator of App1 plans to migrate the application to run on a new server named server2.constoso.com.

You need to minimize the downtime of App1 when migrating the application to Server2.

What should you modify? To answer, select the appropriate options in the answer area.

NOTE: Each correct selection is worth one point.

Hot Area:



Before App1 is migrated:

- the TTL value of app1.contoso.com
- the TTL value of server1.contoso.com
- the TTL value of server2.contoso.com
- the default TTL value of contoso.com

After App1 is migrated:

- the TTL value of server1.contoso.com
- the TTL value of server2.contoso.com
- the host of the server2.contoso.com record
- the target host of the app1.contoso.com record

Correct Answer:

Before App1 is migrated:

- the TTL value of app1.contoso.com
- the TTL value of server1.contoso.com
- the TTL value of server2.contoso.com
- the default TTL value of contoso.com

After App1 is migrated:

- the TTL value of server1.contoso.com
- the TTL value of server2.contoso.com
- the host of the server2.contoso.com record
- the target host of the app1.contoso.com record

References: <https://devcenter.heroku.com/articles/app-migration>





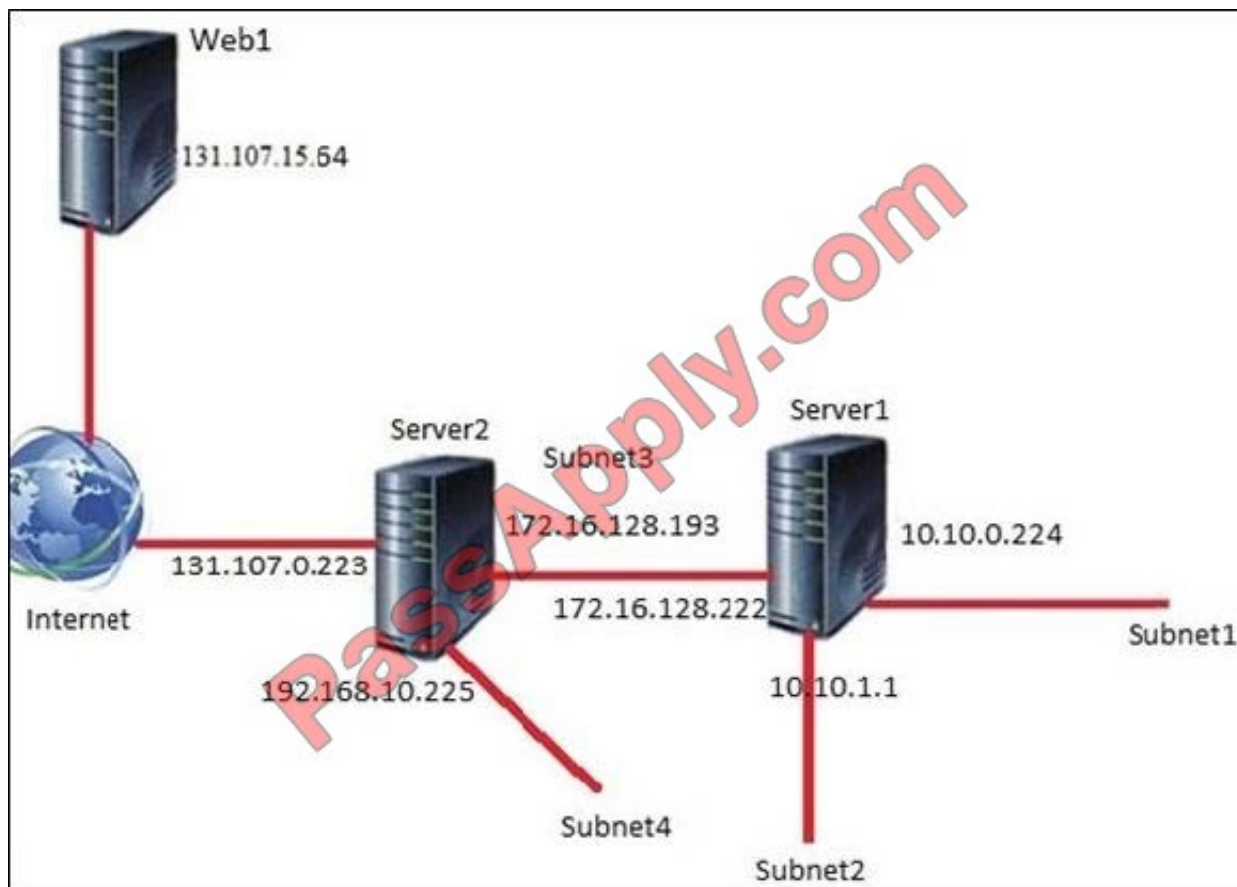
### QUESTION 5

Note: This question is part of a series of questions that present the same scenario. Each question in the series contains a unique solution that might meet the stated goals. Some question sets might have more than one correct solution, while

others might not have a correct solution.

After you answer a question in this sections, you will NOT be able to return to it. As a result, these questions will not appear in the review screen.

You are a network administrator for a company named Contoso, Ltd. The network is configured as shown in the exhibit.



You install the Remote Access server role on Server2.

Server2 has the following configured:

1.

Network address translation (NAT)

2.

The DHCP Server server role

The Security Policy of Contoso states that only TCP ports 80 and 443 are allowed from the Internet to Server2.

You identify the following requirements:



1.

Add 28 devices to Subnet2 for a temporary project.

2.

Configure Server2 to accept VPN connections from the Internet.

3.

Ensure that devices on Subnet2 obtain TCP/IP settings from DHCP on Server2.

**End of repeated scenario**

Which VPN protocol should you configure on Server2?

A. L2TP

B. IKEv2

C. PPTP

D. SSTP

Correct Answer: C

[70-741 PDF Dumps](#)

[70-741 VCE Dumps](#)

[70-741 Practice Test](#)



To Read the [Whole Q&As](#), please purchase the [Complete Version](#) from [Our website](#).

## Try our product !

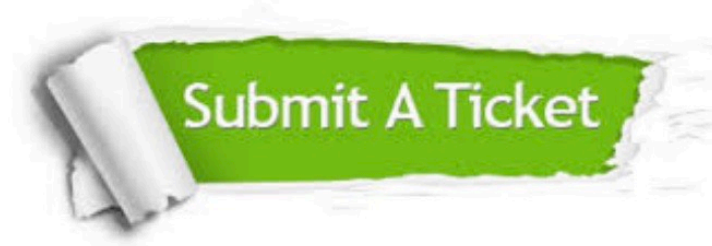
100% Guaranteed Success  
100% Money Back Guarantee  
365 Days Free Update  
Instant Download After Purchase  
24x7 Customer Support  
Average 99.9% Success Rate  
More than 800,000 Satisfied Customers Worldwide  
Multi-Platform capabilities - [Windows](#), [Mac](#), [Android](#), [iPhone](#), [iPod](#), [iPad](#), [Kindle](#)

We provide exam PDF and VCE of Cisco, Microsoft, IBM, CompTIA, Oracle and other IT Certifications. You can view Vendor list of All Certification Exams offered:

<https://www.passapply.com/allproducts>

## Need Help

Please provide as much detail as possible so we can best assist you.  
To update a previously submitted ticket:



 <p><b>One Year Free Update</b> Free update is available within One Year after your purchase. After One Year, you will get 50% discounts for updating. And we are proud to boast a 24/7 efficient Customer Support system via Email.</p>	 <p><b>Money Back Guarantee</b> To ensure that you are spending on quality products, we provide 100% money back guarantee for 30 days from the date of purchase.</p>	 <p><b>Security &amp; Privacy</b> We respect customer privacy. We use McAfee's security service to provide you with utmost security for your personal information &amp; peace of mind.</p>
---	---	--

Any charges made through this site will appear as Global Simulators Limited.  
All trademarks are the property of their respective owners.  
Copyright © passapply, All Rights Reserved.