



70-741^{Q&As}

Networking with Windows Server 2016

Pass Microsoft 70-741 Exam with 100% Guarantee

Free Download Real Questions & Answers **PDF** and **VCE** file from:

<https://www.passapply.com/70-741.html>

100% Passing Guarantee
100% Money Back Assurance

Following Questions and Answers are all new published by Microsoft
Official Exam Center

-  **Instant Download** After Purchase
-  **100% Money Back** Guarantee
-  **365 Days** Free Update
-  **800,000+** Satisfied Customers





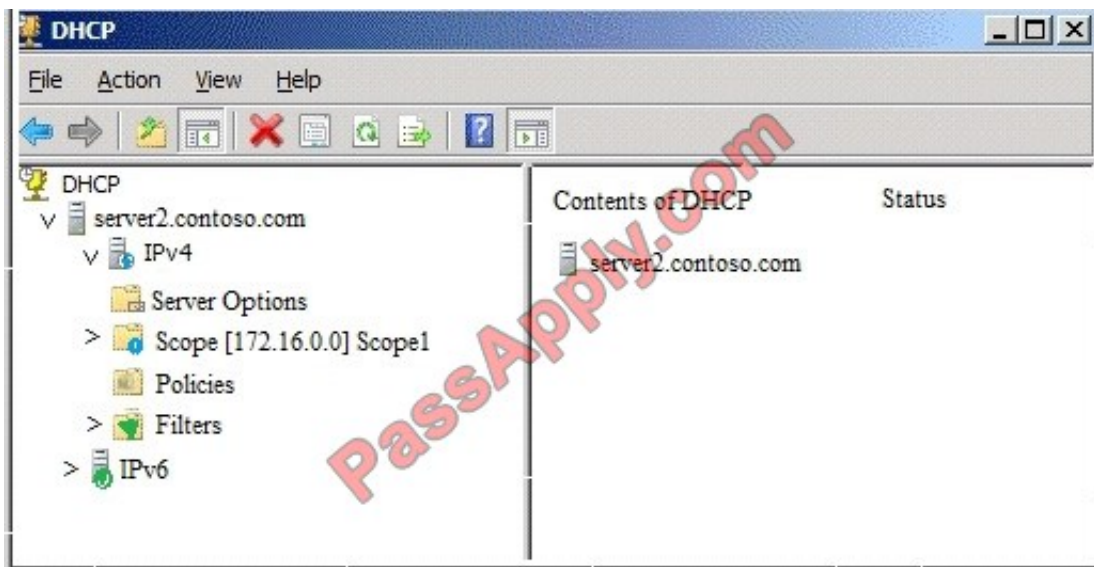
QUESTION 1

After you answer a question in this section, you will NOT be able to return to it. As a result, these questions will not appear in the review screen.

Your network contains an Active Directory domain named contoso.com. The domain contains a DHCP server named Server2 that runs Windows Server 2016.

Users report that their client computers fail to obtain an IP address.

You open the DHCP console as shown in the Exhibit. (Click the Exhibit button.)



Scope1 has an address range of 172.16.0.10 to 172.16.0.100 and a prefix length of 23 bits.

You need to ensure that all of the client computers on the network can obtain an IP address from Server2.

Solution: You run the Set-DhcpServerv4MulticastScope cmdlet.

Does this meet the goal?

A. Yes

B. No

Correct Answer: B

QUESTION 2

You have a server named Server1 that runs Windows Server 2016. Server1 is a Hyper-V host. You run the commands shown in the following graphic:



```
Windows PowerShell
Copyright (C) 2016 Microsoft Corporation. All rights reserved.

PS C:\Users\ServerAdmin> New-VmSwitch -Name TEAM1 -NetAdapterName "NIC 1", "NIC 2" -EnableEmbeddedTeaming
PS C:\Users\ServerAdmin> Set-VmSwitch -Name TEAM1 -NetAdapterName "NIC 3"
```

Use the drop-down menus to select the answer choice that completes each statement based on the information presented in the graphic.

Hot Area:

After running the commands, TEAM1 contains [answer choice] network adapters.

▼
one
two
three

If you run **Add-VmSwitch TeamMember-VmSwitchNameTEAM1-NetAdapterName "NIC4"**, TEAM1 will contain [answer choice] network adapters.

▼
one
two
three
four

Correct Answer:



After running the commands, TEAM1 contains [answer choice] network adapters.

▼
one
two
three

If you run **Add-VmSwitch TeamMember-VmSwitchNameTEAM1-NetAdapterName "NIC4"**, TEAM1 will contain [answer choice] network adapters.

▼
one
two
three
four

QUESTION 3

DRAG DROP

Note: This question is part of a series of questions that use the same scenario. For your convenience, the scenario is repeated in each question. Each question presents a different goal and answer choices, but the text of the scenario is exactly the same in each question in this series.

Start of repeated scenario

Your network contains an Active Directory domain named contoso.com. The functional level of the domain is Windows Server 2012.

The network uses an address space of 192.168.0.0/16 and contains multiple subnets.

The network is not connected to the Internet.

The domain contains three servers configured as shown in the following table.

Server name	Configuration
Server1	Domain controller and DNS server
Server2	Member server
Server3	DHCP server



Client computers obtain TCP/IP setting from Server3.

You add a second network adapter to Server2. You connect the new network adapter to the Internet. You install the Routing role service on Server2.

DNS zone name	Type	Zone file name
Contoso.com	Active Directory-integrated	None
Fabrikam.com	Primary	Fabrikam.com.dns
Tailspintoys.com	Primary	Tailspintoys.com.dns
168.192.in-addr.arpa	Primary	168.192.in-addr.arpa.dns

End of repeated scenario

You need to ensure that computers in the domain can resolve the following:

1.

The name server2.contoso.com to the name nat.contoso.com

2.

The 192.168.10.50 IP address to the name host7.fabrikam.com

3.

The name server7.tailspintoys.com to the 192.168.100.101 IP address

Which types of DNS records should you use? To answer, drag the appropriate DNS record types to the correct requirements. Each DNS record type may be used once, more than one, or not at all. You may need to drag the split bar between panes or scroll to view content.

Select and Place:

DNS Record Types

Alias (CNAME)	Host (A)
Host (AAAA)	Mail exchanger (MX)
Name server (NS)	Pointer (PTR)
Service location (SVR)	Text (TXT)

Answer Area

The name server2.contoso.com to the name nat.contoso.com:	DNS record type
The 192.168.10.50 IP address to the name host7.fabrikam.com:	DNS record type
The name server7.tailspintoys.com to the 192.168.100.101 IP address:	DNS record type

Correct Answer:



DNS Record Types

<input type="text"/>	<input type="text"/>
Host (AAAA)	Mail exchanger (MX)
Name server (NS)	<input type="text"/>
Service location (SVR)	Text (TXT)

Answer Area

The name server2.contoso.com to the name nat.contoso.com:	Alias (CNAME)
The 192.168.10.50 IP address to the name host7.fabrikam.com:	Pointer (PTR)
The name server7.tailspintoys.com to the 192.168.100.101 IP address:	Host (A)

QUESTION 4

You have a server named Server1 that runs Windows Server 2016. Server1 is in a workgroup and has the DNS Server role installed. You need to enable DNS analytical diagnostic logging on Server1. What should you do?

- A. From Local Group Policy Editor, configure Audit Policy.
- B. From DNS Manager, configure Monitoring.
- C. From Windows PowerShell, run the Enable-DnsServerPolicy cmdlet.
- D. From DNS Manager, configure Event Logging.
- E. From Event Viewer, configure DNS-Server Applications and Services Logs.

Correct Answer: E

<https://www.yourdigitalmind.com/tutorials/how-to-enable-dns-logging-and-diagnostics-in-windows-server-2012-r2/>

QUESTION 5

Your network contains multiple wireless access points (WAPs) that use WPA2-Personal authentication. The network contains an enterprise root certification authority (CA).

The security administrator at your company plans to implement WPA2-Enterprise authentication on the WAPs.

To support the authentication change, you deploy a server that has Network Policy Server (NPS) installed.

You need to configure NPS to authenticate the wireless clients.

What should you do on the NPS server?

- A. Add RADIUS clients and configure network policies.
- B. Create a remote RADIUS server group and configure connection request policies.
- C. Create a remote RADIUS server group and install a server certificate.



D. Add RADIUS clients and configure connection request policies.

Correct Answer: A

<https://ittrainingday.com/2013/12/25/how-to-configure-a-windows-radius-server-for-802-1x-wireless-or-wired-connections/>

[Latest 70-741 Dumps](#)

[70-741 PDF Dumps](#)

[70-741 Exam Questions](#)



To Read the [Whole Q&As](#), please purchase the [Complete Version](#) from [Our website](#).

Try our product !

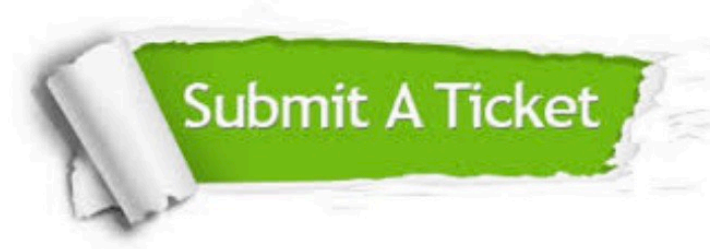
100% Guaranteed Success
100% Money Back Guarantee
365 Days Free Update
Instant Download After Purchase
24x7 Customer Support
Average 99.9% Success Rate
More than 800,000 Satisfied Customers Worldwide
Multi-Platform capabilities - [Windows](#), [Mac](#), [Android](#), [iPhone](#), [iPod](#), [iPad](#), [Kindle](#)

We provide exam PDF and VCE of Cisco, Microsoft, IBM, CompTIA, Oracle and other IT Certifications. You can view Vendor list of All Certification Exams offered:

<https://www.passapply.com/allproducts>

Need Help

Please provide as much detail as possible so we can best assist you.
To update a previously submitted ticket:



 <p>One Year Free Update Free update is available within One Year after your purchase. After One Year, you will get 50% discounts for updating. And we are proud to boast a 24/7 efficient Customer Support system via Email.</p>	 <p>Money Back Guarantee To ensure that you are spending on quality products, we provide 100% money back guarantee for 30 days from the date of purchase.</p>	 <p>Security & Privacy We respect customer privacy. We use McAfee's security service to provide you with utmost security for your personal information & peace of mind.</p>
---	---	--

Any charges made through this site will appear as Global Simulators Limited.
All trademarks are the property of their respective owners.
Copyright © passapply, All Rights Reserved.